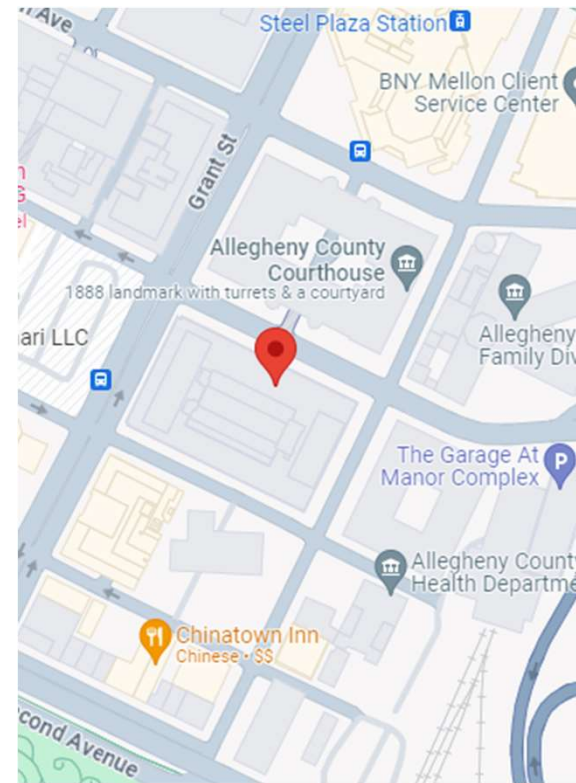
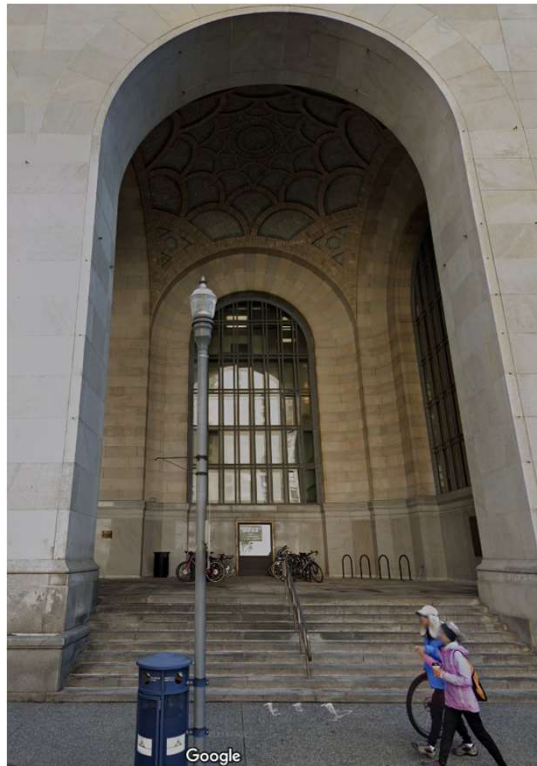




City County Building Bike Runnel

PDP Development Review Commission /
12/14/2023

Location – City County Building, front steps facing Grant St

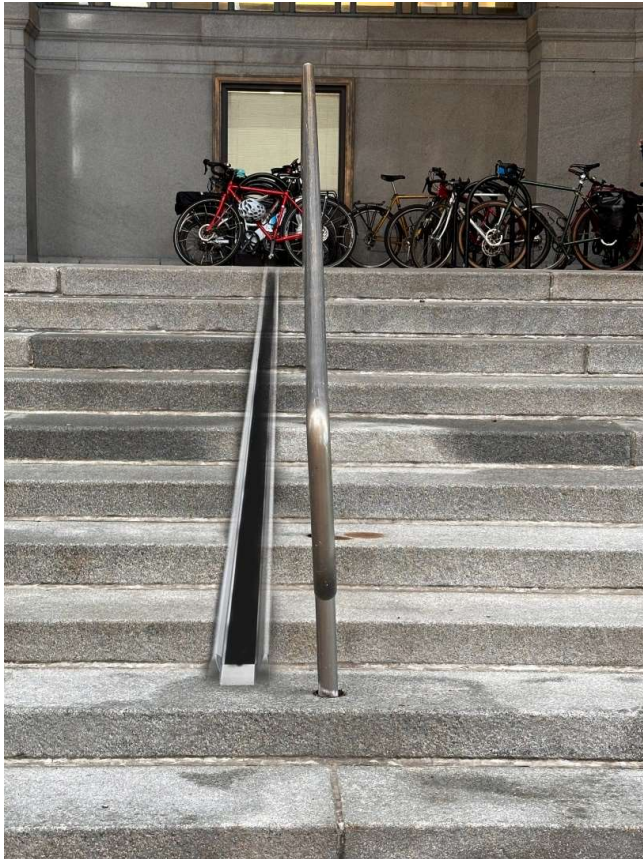


Information

- Support from DOMI and DPW Directors for Runnel installation
- Many requests and 311s from city employees who use the bike parking on the portico
- Example 311: "It would be very nice if a stairway runnel could be added to the stairs outside CCB near the bike racks. It would make getting bikes up and down the stairs much easier/accessible for people who need it. This isn't strictly "bike parking" but it would help with facilitating bike parking at this location. (Also more bike racks would be cool too!) Thank you!"
- Low profile, visually in line with the rest of the building
- Proliferation of heavy e-bikes make this even more necessary



Design



- Black, textured tape on top of runnel
- located in front of the bike parking for easy access
- Ability to add another runnel on other side of building if more bike parking is added
- Currently no accessibility interventions to get up the stairs



Installation

- DPW / Facilities will perform installation with strict guidance from manual
- In contact with manufacturer who has done other historic installs and will offer information and best practices

4 Install end cap modules onto ramp ends. Insert end caps into end of complete ramp section. Slide square head bolts into slots on ramp. If necessary, use mallet to position end caps flush with the edge of the ramp. Tighten 3/8-16 nuts to 25 ft-lbs


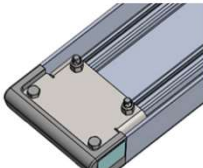



Figure 8

Figure 9

11

5 Place ramp assembly on stairs. The bottom endcap should rest on the floor/landing. The bottom mounting bracket should lie on the floor at the bottom of the steps. The top mounting bracket should lie on the stair tread just below the top of the stairway. The bottom edge of the ramp should rest along the leading edges/nose of the stairs. The other mounting brackets should be positioned so that they are approximately 3 to 4 linear feet from the next mounting bracket(s). If stairway does not allow even placement between brackets, position them such that there is no more than 4 linear feet of unsupported ramp along any portion of the ramp.

6 Prepare bracket assembly. Position the bracket assemblies so that the ramp bracket is snug against the ramp and the stair tread bracket lies flat on the ground/tread. Snug the brackets onto the ramp.

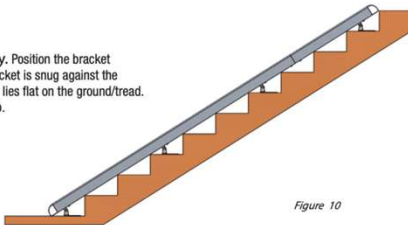


Figure 10

12

Materials (cont)

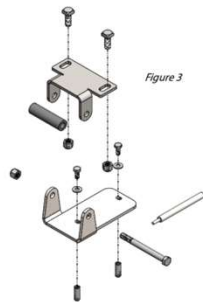


Figure 3

Mounting Bracket Module

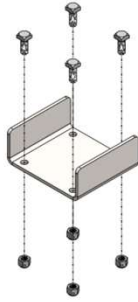


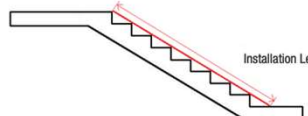
Figure 4

Joining Biscuit Module

6

The table shows how many modules are required for various installation lengths. DOUBLE CHECK ALL INSTALLATION LENGTHS BEFORE BEGINNING INSTALLATION. IF REQUIRED INSTALL LENGTHS ARE SIGNIFICANTLY DIFFERENT (OVER 1 FOOT DIFFERENCE) THAN QUOTED FOR YOUR ORDER PLEASE CONTACT SARIS INFRASTRUCTURE.

Figure 5



Installation Length

Installation Length	# of Ramp Modules	# of End Cap Modules	# of Bracket Modules	# of Joining Modules
4 to 8'	1	1	3	0
8 to 12'	2	1	4	1
12 to 16'	2	1	5	1
16 to 20'	3	1	6	2
20 to 24'	3	1	7	2
24 to 28'	4	1	8	3
28 to 32'	4	1	9	3
Over 32'				

Contact Saris Infrastructure

7





Thank You!

More Questions?

Contact: ernie.Francestine@pittsburghpa.gov