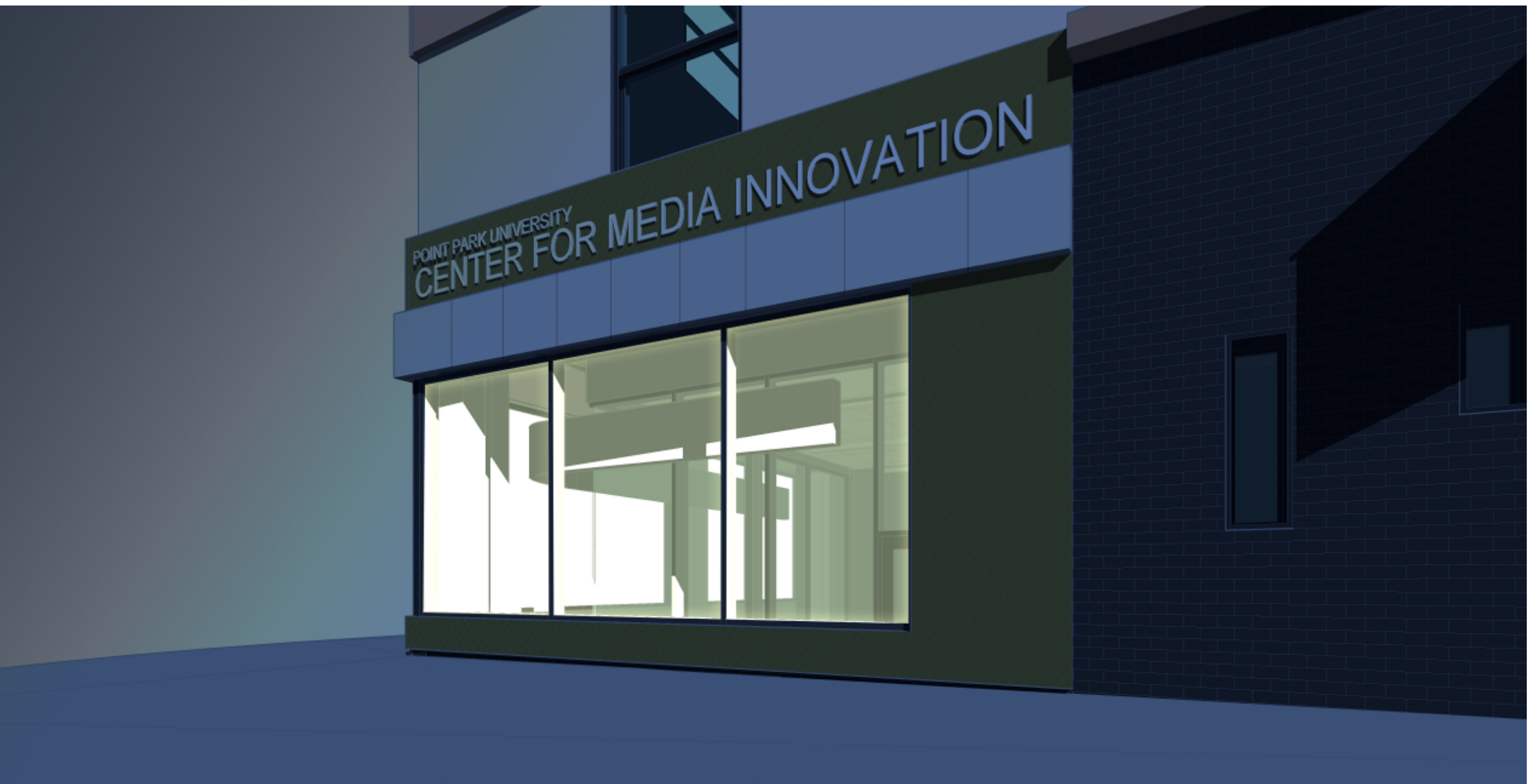




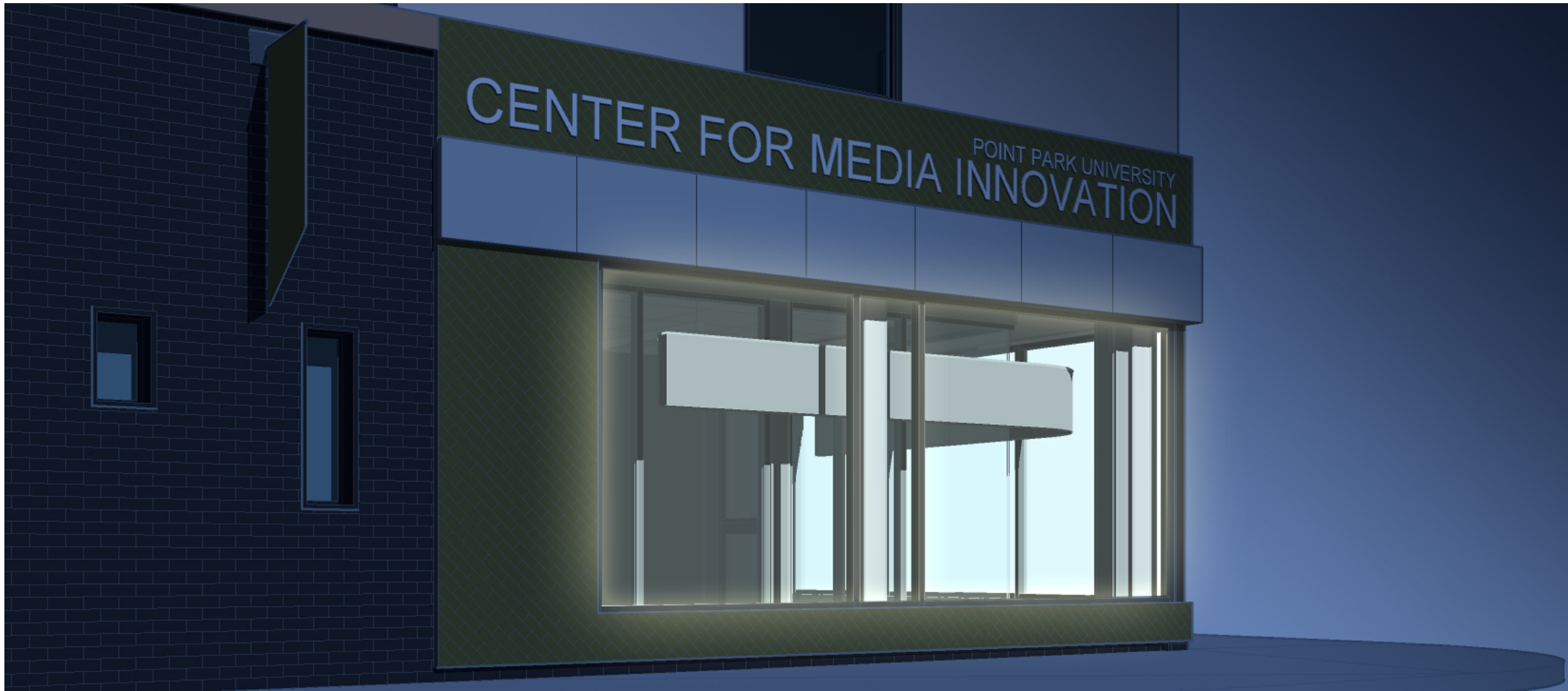
DAYTIME BUILDING PERSPECTIVE - FORT PITT BOULEVARD FACADE



NIGHTTIME BUILDING PERSPECTIVE - FORT PITT BOULEVARD FACADE



DAYTIME BUILDING PERSPECTIVE - WOOD STREET FACADE



NIGHTTIME BUILDING PERSPECTIVE - WOOD STREET FACADE

INTERIOR FIT-OUT

CENTER FOR
MEDIA
INNOVATION

POINT PARK
UNIVERSITY

10 Wood Street
Pittsburgh, PA 15222

CONSULTANT

POINT PARK
UNIVERSITY
201 Wood Street
Pittsburgh, PA 15222

BID/ PERMIT SET

lga PARTNERS
1425 Forbes Ave., Suite 400 Pittsburgh, PA 15219
P 412.243.3430 F 412.224.4747

These drawings are instruments of the Architect's service and are the property of LGA Partners. They shall not be reproduced or used in any way, whatsoever, without the written permission of LGA Partners. © 2022

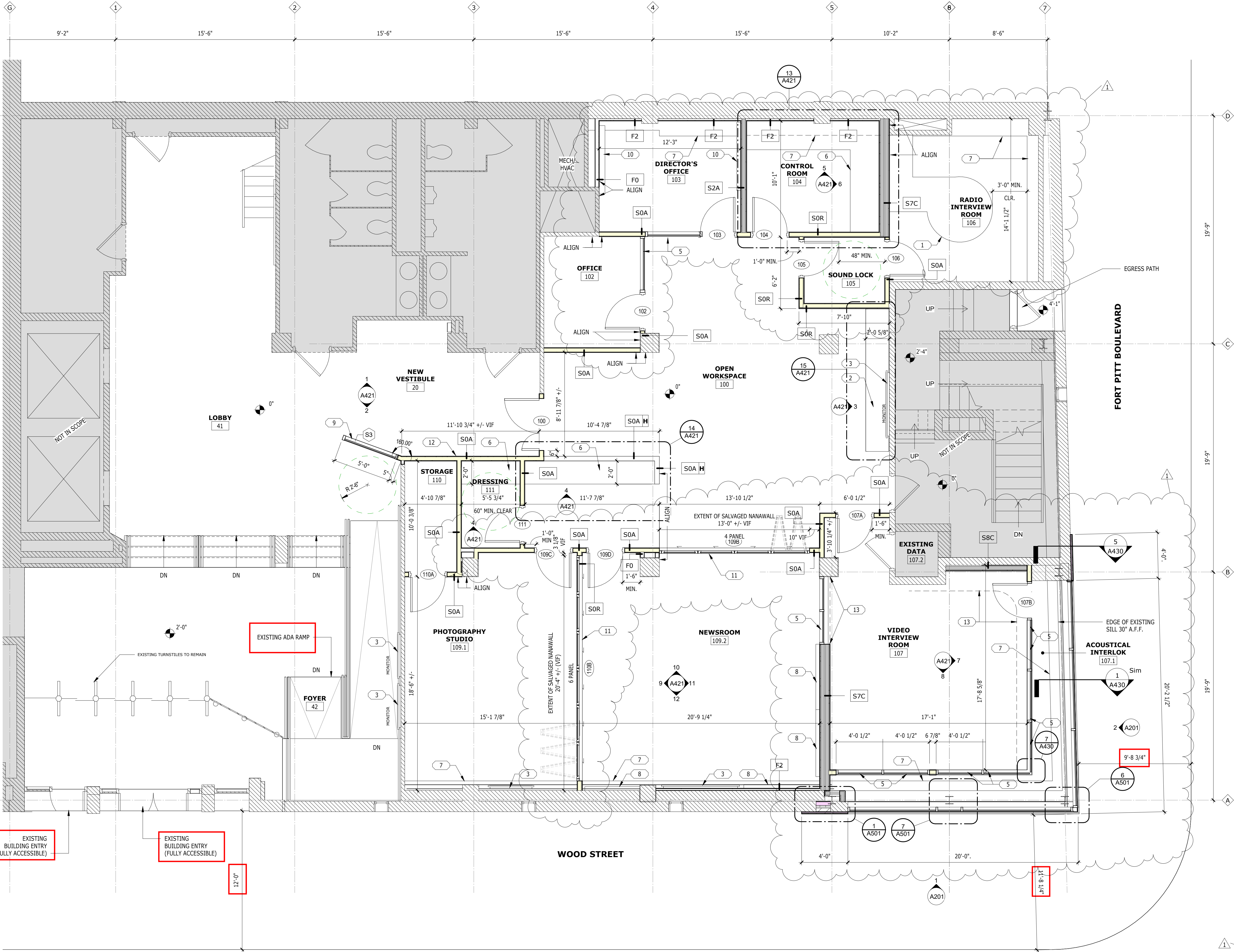
NO.	DATE	DESCRIPTION
REVISION DATES		
	08/18/22	
ORIGINAL ISSUE DATE		

PROJECT NO.:	20250	
DRAWN BY:	Author	

RENDERED
PERSPECTIVES

A117

DRAWING LOCATION: C:\Users\jbenard\Documents\202505 Point Park Center for Media Innovation_R22_Central_Janimately.rvt
PRINT DATE & TIME: 1/23/2022 1:47:13 PM



CONSTRUCTION NOTES

- DO NOT SCALE DRAWINGS.
- DIMENSIONS ARE TAKEN FROM FACE OF NEW FINISH MATERIALS. ALLOW FOR TOLERANCES WHEN FIELD MEASURING FOR APPLIANCES, CASEWORK, AND OTHER FIXTURES.
- INTERIOR STUDWALL PARTITIONS TO BE TYPE SOA UNLESS OTHERWISE NOTED. REFER TO PARTITION TYPES FOR CONSTRUCTION.
- GC TO VERIFY THE DIMENSIONS OF ALL SALVAGED ITEMS PRIOR TO FRAMING AND NOTIFY ARCHITECT OF ANY CONFLICTS WITH LAYOUT.

FLOOR PLAN LEGEND

PARTITION TYPE
PARTITION MODIFIER

W#H WALL TAG
HEAD CONDITION MODIFIER

FULL HEIGHT WALL
FULL HEIGHT WALL TO REMAIN
PARTIAL HEIGHT WALL

DOOR
DOOR TAG
EXISTING DOOR TO REMAIN

WINDOW
WINDOW WALL TAG - CURTAINWALL

SIM SIMILAR/MIRRORED INDICATOR
BS-1 A101 DRAWING NUMBER
BUILDING SECTION INDICATOR
SHEET NUMBER
SIMILAR/MIRRORED INDICATOR
1- A101 DRAWING NUMBER
WALL SECTION INDICATOR
SHEET NUMBER
SIMILAR/MIRRORED INDICATOR
1- A101 DRAWING NUMBER
EXTERIOR ELEVATION INDICATOR
SHEET NUMBER
2 A101 4 DRAWING NUMBER
INTERIOR ELEVATION INDICATOR
SHEET NUMBERS
SIMILAR/MIRRORED INDICATOR
1- A101 DRAWING NUMBER
DETAIL CALLOUT INDICATOR
SHEET NUMBER
0 EXIST COLUMN GRID INDICATOR

Room Name NAME
101 NUMBER
150 SF AREA (SQUARE FOOTAGE)

ROOM TAG

E222 EQUIPMENT TAG
T## - TOILET ROOM ACCESSORY
S## - SIGNAGE
K## - KITCHEN EQUIPMENT
F## - FIXTURES
FEC## - FIRE EXTINGUISHER CABINET
M## - MAILBOX
G## - GENERAL
KEYNOTE NUMBER

FP-1 KEYNOTE TAG
DRAWING TYPE

FEC FIRE EXTINGUISHER CABINET
MOUNTED WITH TOP @ 48" A.F.F.
SEE LIFE SAFETY PLANS
FEC1 = SEMI-RECESSED
FEC2 = SURFACE MOUNTED
FEC3 = RECESSED

FE# FIRE EXTINGUISHER
FE = 2A10BC
MOUNTED WITH TOP @ 42" A.F.F.

AREA NOT IN SCOPE / WORK AREA

KEYNOTES - FLOOR PLAN	
1	RELOCATED DESK, SEE AD100. DESK TO BE MODIFIED TO PROVIDE 3'-0" CLEAR WIDTH AT ADJACENT WALL. SEE AS31.
2	NEW CUSTOM BAR HEIGHT COUNTER
3	RELOCATED WALL MOUNTED DISPLAY. SEE AV DWG'S FOR MOUNTING DIMENSIONS AND DETAILS
5	RELOCATED GLASS STOREFRONT PANELS, SEE SHEET AD100
6	CUSTOM COUNTER, SEE DETAILS ON SHEET A421
7	PATCH/REPAIR GWS AT EXISTING KNEE WALL - TYPICAL
8	RELOCATED WALL MOUNTED GLASSBOARD, SEE AD100
9	GLASS STOREFRONT PANEL, SEE ELEVATION
10	SHELVING TO BE RE-MOUNTED BY GC
11	SALVAGED NANAWALL. GC TO COORDINATE REQUIRED JAMB DETAIL AND SUPPORT BLOCKING WITH EASLEY & RIVERS.
12	PAINT TO MATCH EXISTING LOBBY PAINT
13	DRAPEY ABOVE

INTERIOR FIT-OUT

CENTER FOR
MEDIA
INNOVATION

POINT PARK
UNIVERSITY

10 Wood Street
Pittsburgh, PA 15222

CONSULTANT

BID/ PERMIT SET

lga PARTNERS
1425 Forbes Ave., Suite 400 Pittsburgh, PA 15219
P 412.243.3430 F 412.224.4747

These drawings are instruments of the Architect's service and are the property of LGA Partners. They shall not be reproduced or used in any way, whatsoever, without the written permission of LGA Partners. © 2022

PROJECT NO.: 20250
DRAWN BY: LGA PARTNERS

FIRST FLOOR PLAN

A101

CENTER FOR
MEDIA
INNOVATION

POINT PARK
UNIVERSITY

10 Wood Street
Pittsburgh, PA 15222

CONSULTANT

BID/ PERMIT SET

lga PARTNERS

1425 Forbes Ave. Suite 400 Pittsburgh, PA 15219
P 412.243.3430 F 412.224.4747

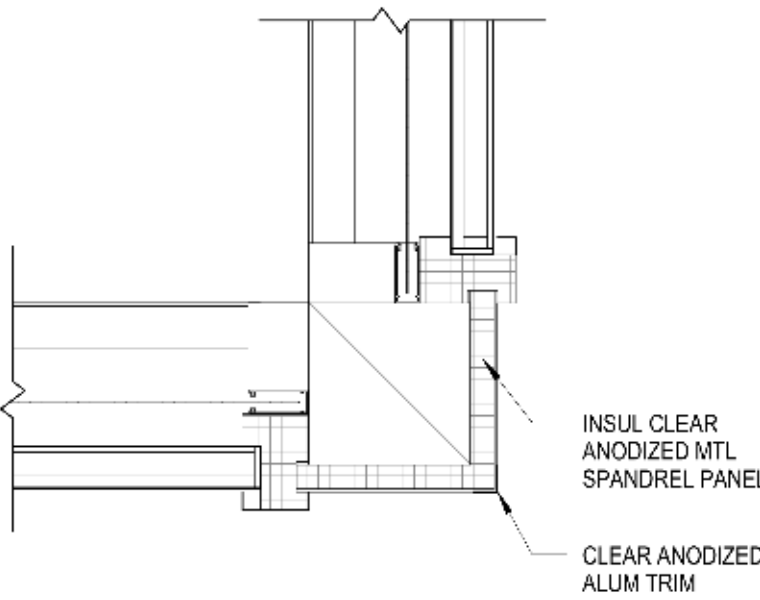
These drawings are instruments of the Architect's service and are the property of LGA Partners. They shall not be reproduced or used in any way, whatsoever, without the written permission of LGA Partners. © 2022

1	08.03.22	ADDENDUM 1
NO.	DATE	DESCRIPTION
REVISION DATES		
06/27/2022		
ORIGINAL ISSUE DATE		

PROJECT NO.:	20250	
DRAWN BY:	LGA PARTNERS	

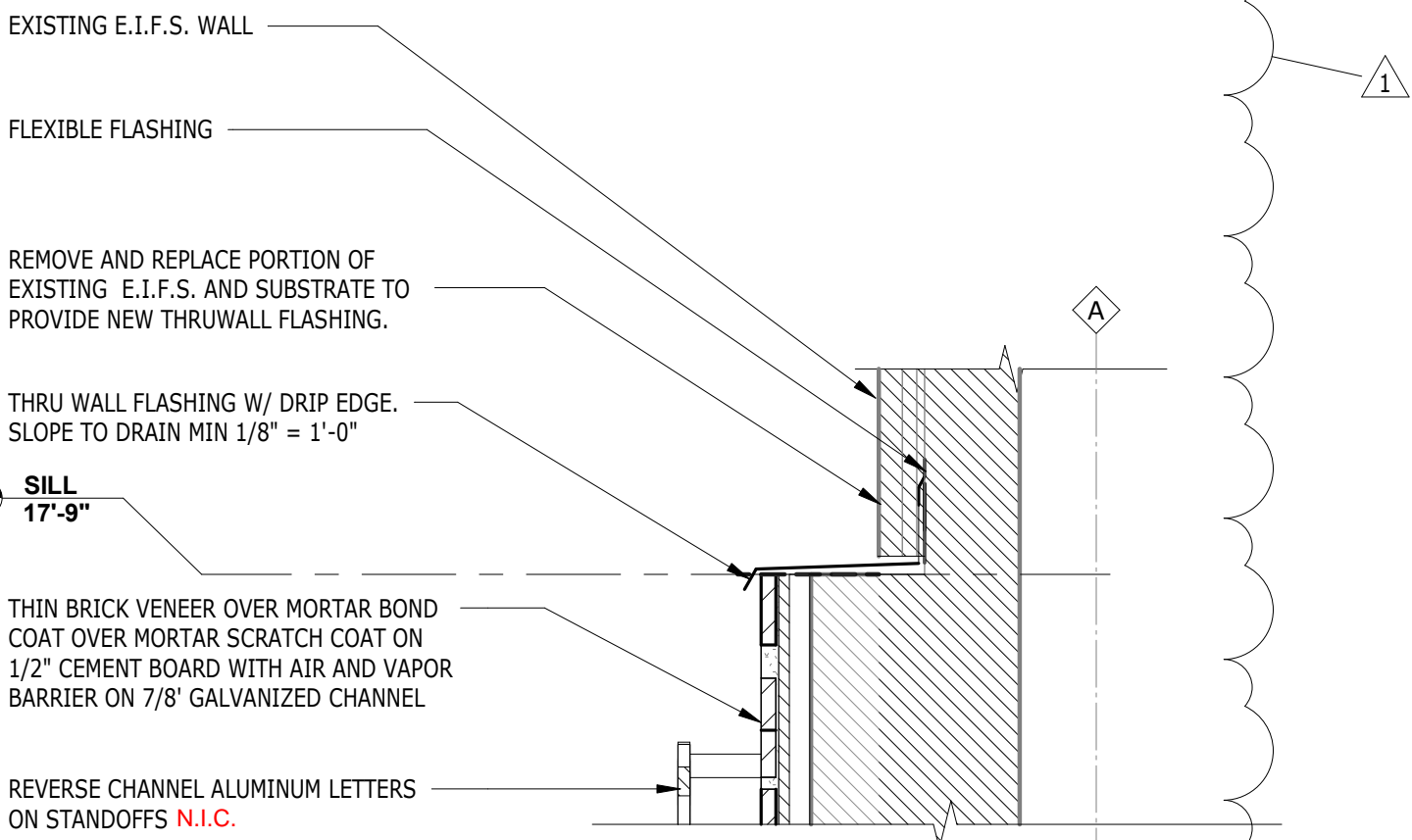
SECTION DETAILS

A430



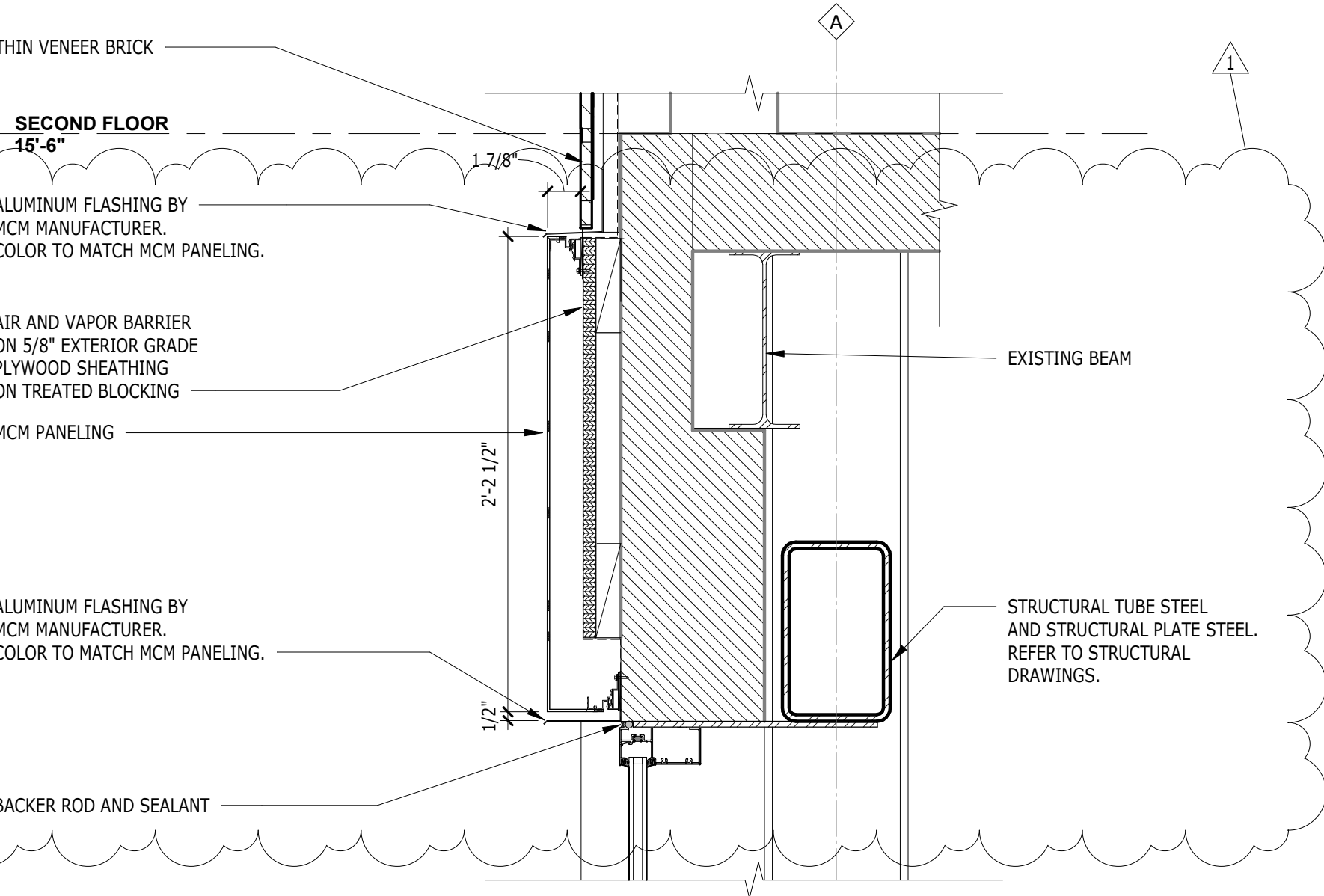
7 VIDEO-CORNER GLAZING DETAIL

A430 SCALE: 1 1/2" = 1'-0"



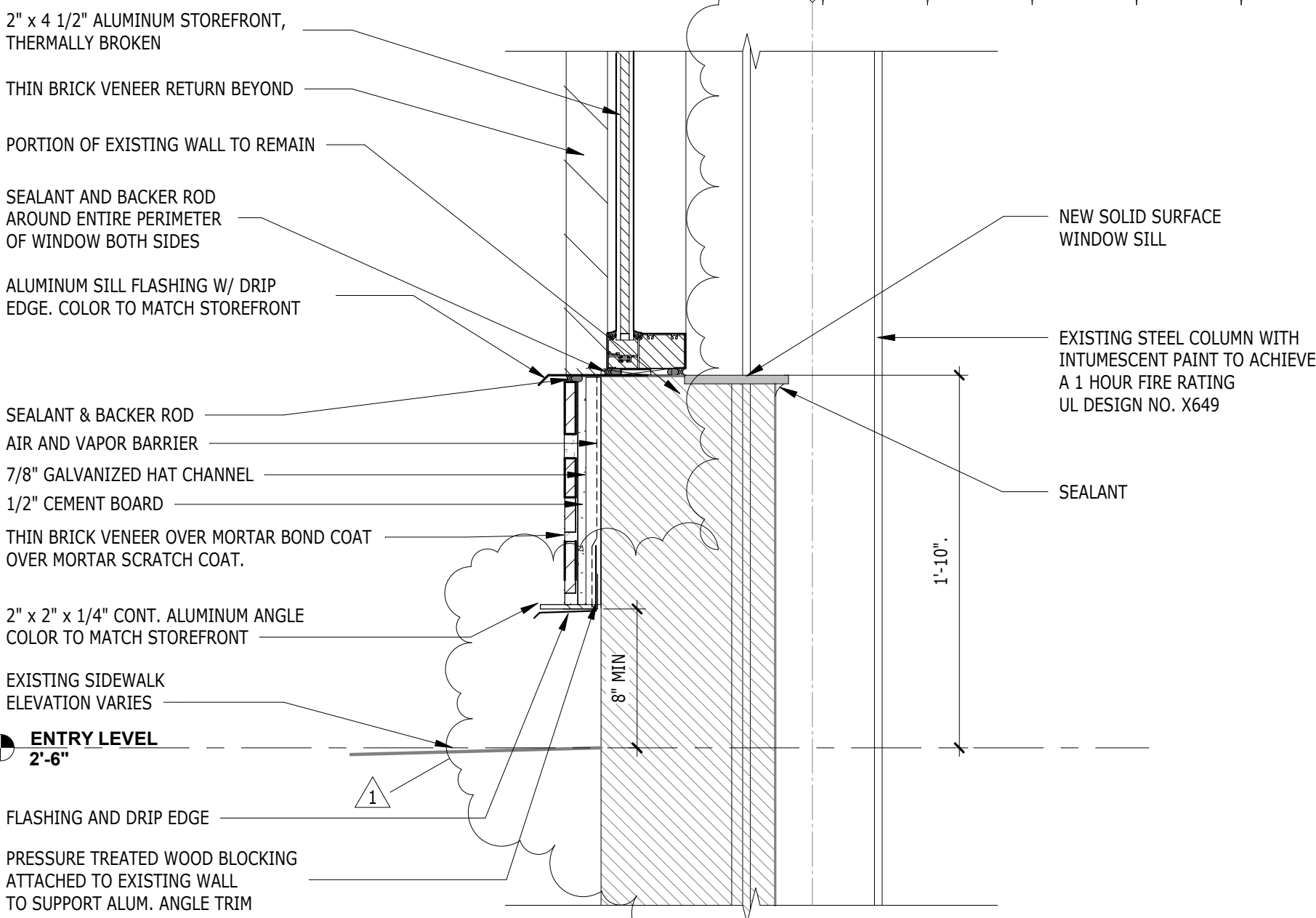
4 SECTION DETAIL

A430 SCALE: 1 1/2" = 1'-0"



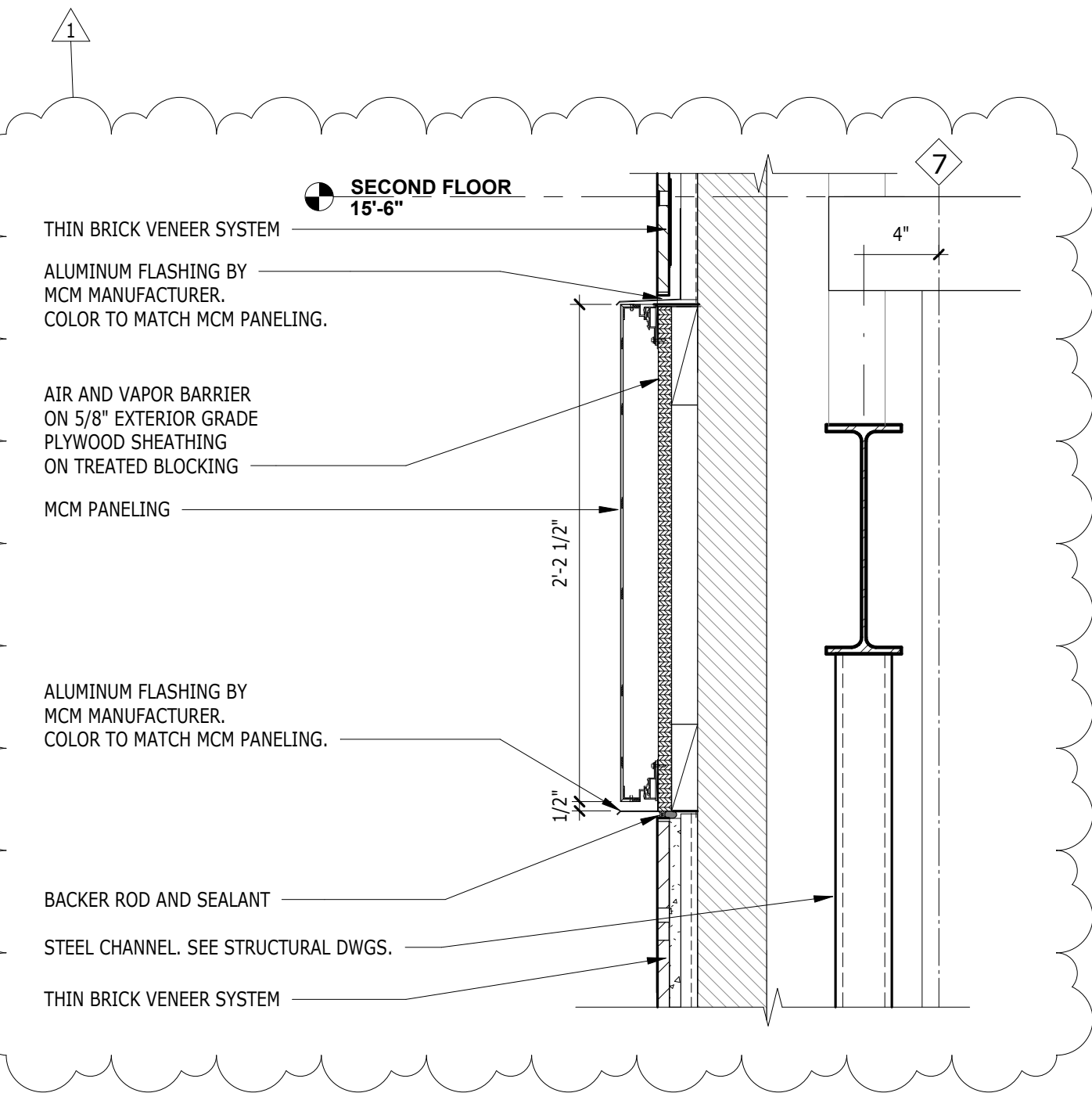
3 SECTION DETAIL

A430 SCALE: 1 1/2" = 1'-0"



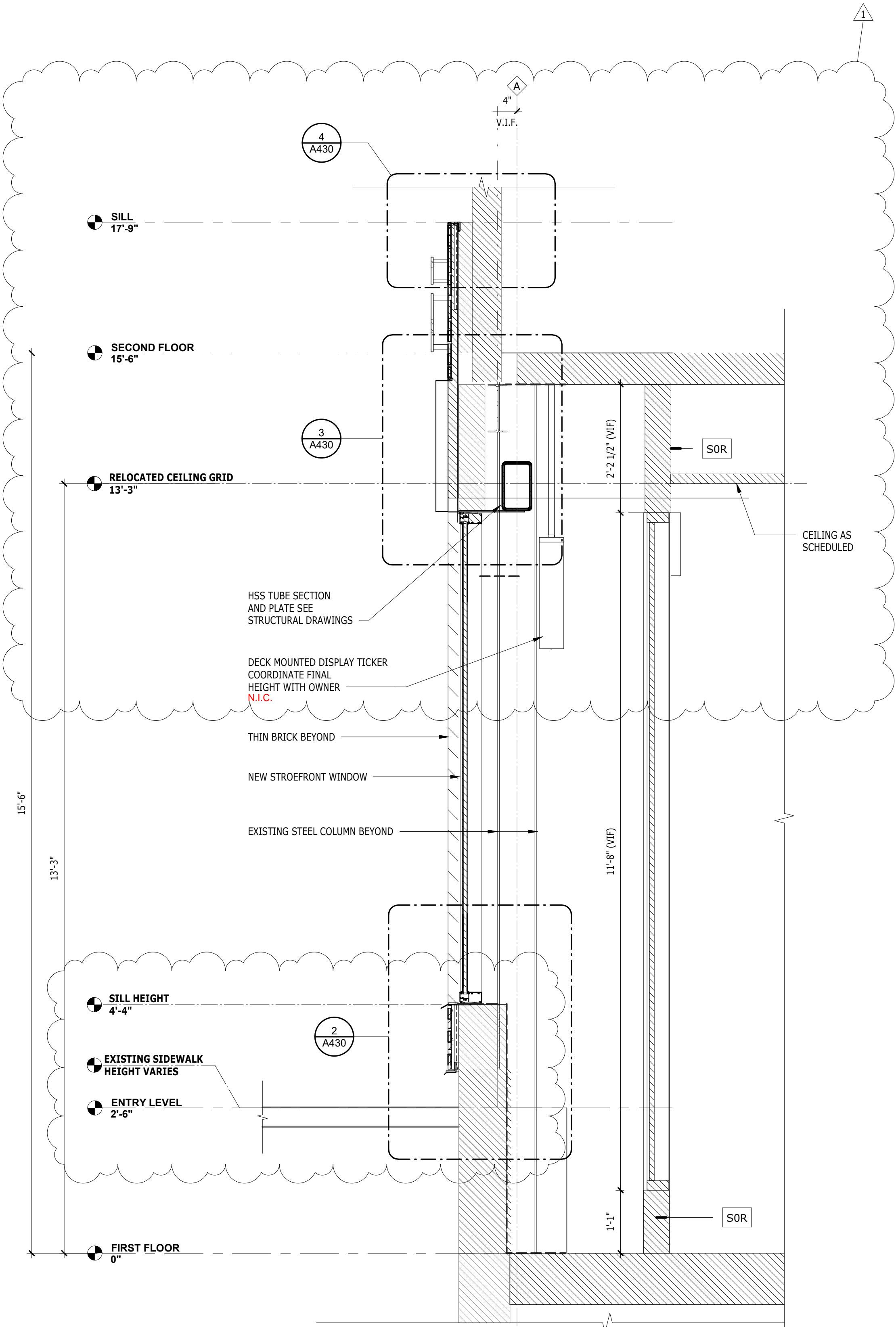
2 SECTION DETAIL

A430 SCALE: 1 1/2" = 1'-0"



5 SECTION DETAIL

A430 SCALE: 1 1/2" = 1'-0"

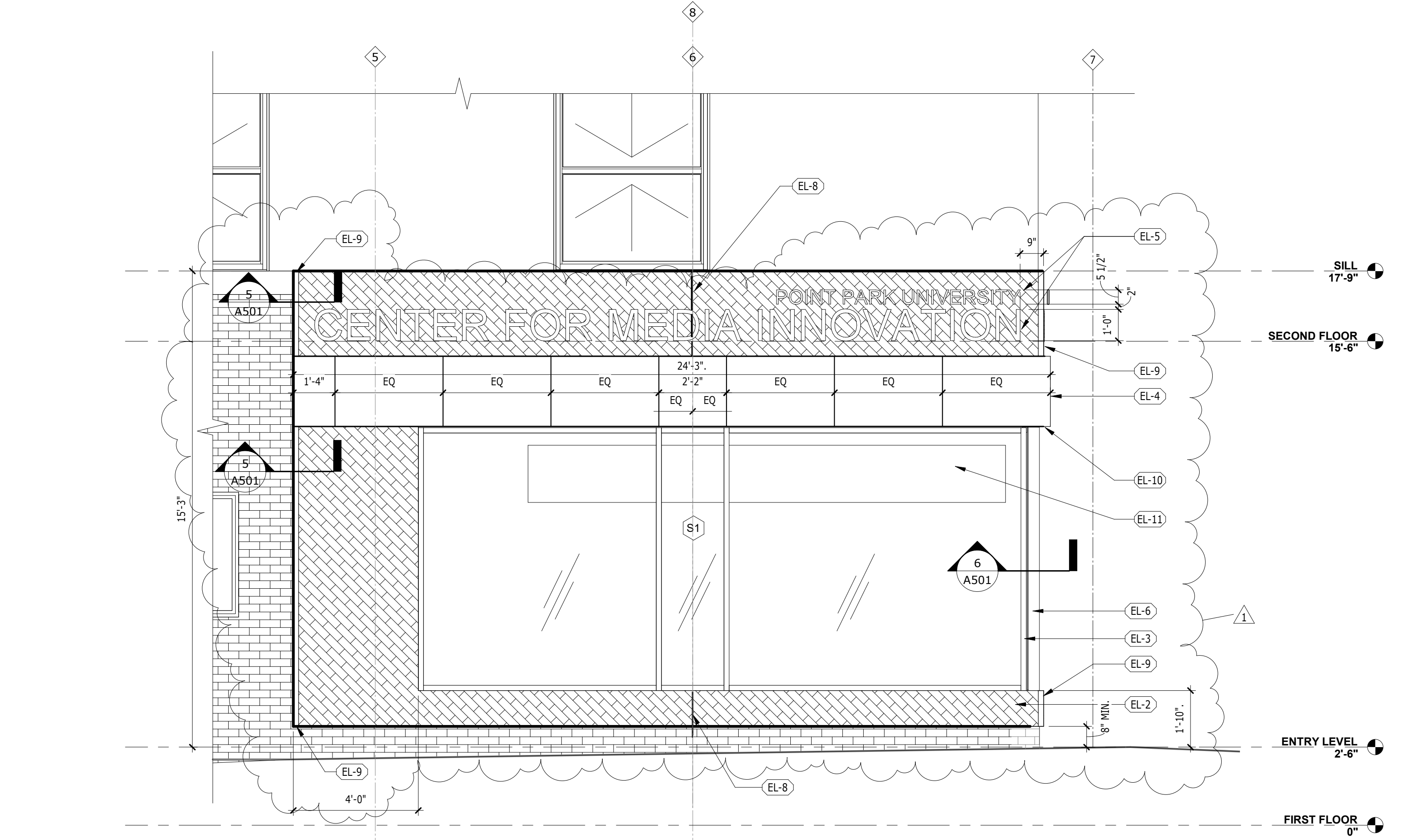


1 WALL SECTION

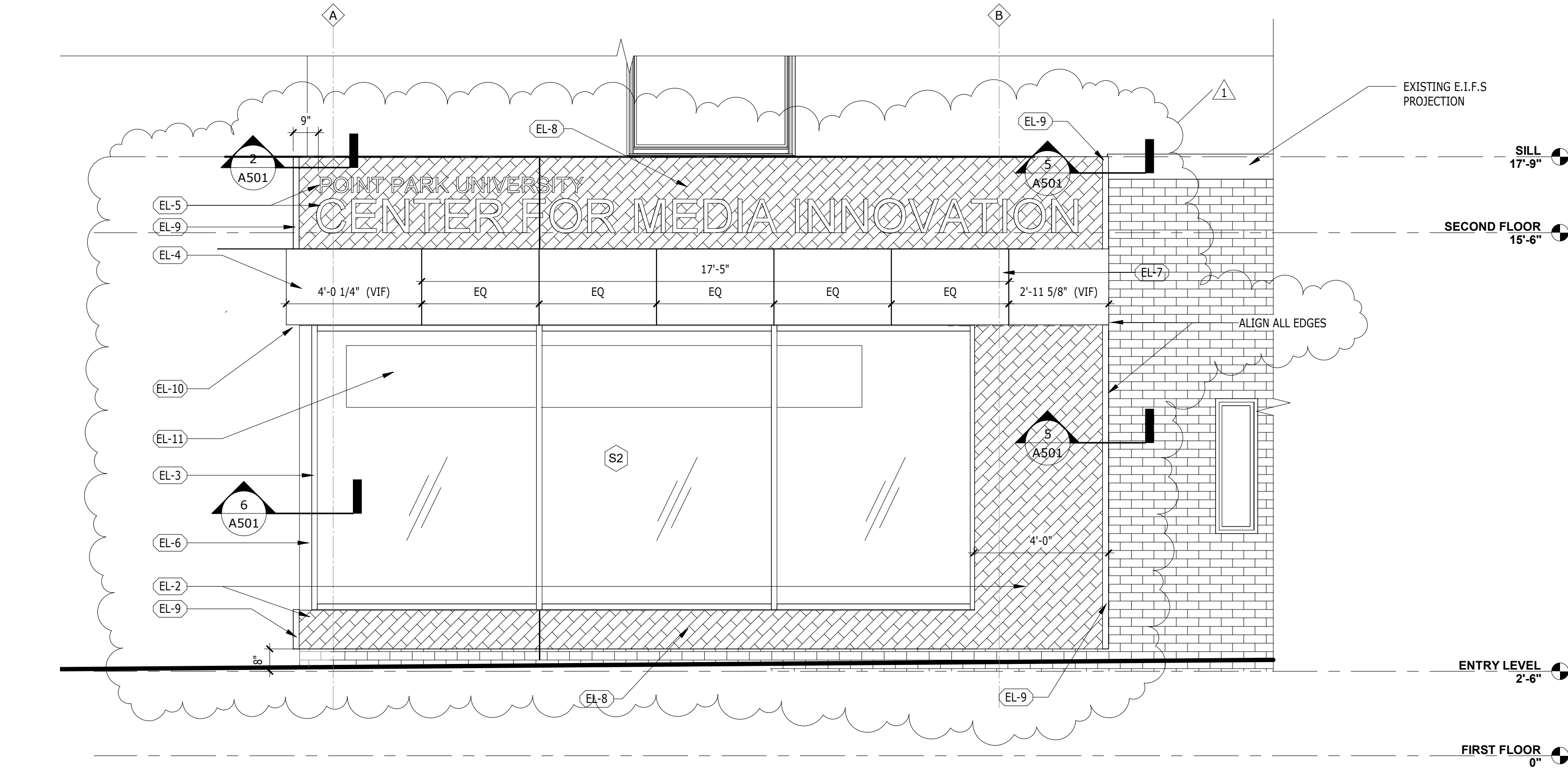
A430 SCALE: 3/4" = 1'-0"

DRAWING LOCATION: C:\Users\jlewis\Documents\202505 Point Park Center for Media Innovation_R22_Central_JawarNTLL.Y.rvt

PRINT DATE & TIME: 8/3/2022 12:44:24 PM



1 WEST ELEVATION (WOOD STREET)
A201 SCALE: 3/8" = 1'-0"



2 SOUTH ELEVATION (FORT PITT BOULEVARD)
A201 SCALE: 3/8" = 1'-0"

ELEVATION NOTES

- TEMPERED GLAZING SHALL CONFORM TO CPSC 16 CFR 201 AS REQUIRED IN SECTION 2406 OF THE IBC.
- SAFETY GLAZING SHALL CARRY A FIRE RATING AS RECOGNIZED BY THE IBC AND CONFORM TO THE REQUIREMENTS OF TEMPERED GLAZING.

ELEVATION LEGEND

WINDOW WALL TAG

- S## STOREFRONT
- C## CURTAINWALL
- W## WINDOW TAG
- 101 DOOR TAG

- Name LEVEL TAG
- Elevation HEIGHT RELATIVE TO FIRST FL.

KEYNOTES - ELEVATION

EL-1	PATCH EXISTING BRICKWORK TO MATCH EXISTING
EL-2	THIN BRICK VENEER OVER EXISTING BRICK
EL-3	ALUMINUM STOREFRONT WINDOW
EL-4	METAL CORNICE
EL-5	REVERSE CHANNEL ALUMINUM LETTERS RELOCATED FROM EXISTING BUILDING LOCATION. LETTERS ARE MOUNTED ON STANDOFFS THAT SLEEVE INTO BUILDING AND CONNECT TO BUILDING POWER N.I.C.
EL-6	ALUM. BREAK METAL COVER
EL-7	COMPOSITE METAL PANEL JOINT
EL-8	CONTROL JOINT
EL-9	2"x2" ALUM. ANGLE AT CORNER. COLOR TO MATCH STOREFRONT
EL-10	DRIP EDGE
EL-11	TICKER TAPE N.I.C.

INTERIOR FIT-OUT

CENTER FOR MEDIA INNOVATION

POINT PARK UNIVERSITY

10 Wood Street
Pittsburgh, PA 15222

CONSULTANT

BID/ PERMIT SET

lga PARTNERS
1425 Forbes Ave. Suite 400 Pittsburgh, PA 15219
P 412.243.3430 F 412.224.4747

These drawings are instruments of the Architect's service and are the property of LGA Partners. They shall not be reproduced or used in any way, whatsoever, without the written permission of LGA Partners. © 2022

1	08.03.22	ADDENDUM 1
NO.	DATE	DESCRIPTION
REVISION DATES		
06/27/2022		
ORIGINAL ISSUE DATE		

PROJECT NO.:	20250
DRAWN BY:	LGA PARTNERS

EXTERIOR ELEVATIONS

A201