

UFC EXTERIOR SIGNAGE CONCEPT
5TH AVENUE VIEW

FRONT ENTRANCE SIGN
LITE -PUSH THROUGH WHITE LETTERING



BANNER SIGN 1
DOUBLE SIDED SIGN
ATHLETE IMAGE FACING DOUBLE DOOR ENTRANCE
UFC LOGO ON BACKSIDE



BANNER SIGN 2
DOUBLE SIDED SIGN
ATHLETE IMAGE FACING DOUBLE DOOR ENTRANCE
UFC LOGO ON BACKSIDE



ISSUED 05.13.2022

UFC EXTERIOR SIGNAGE CONCEPT
FORBES AVENUE VIEW

FRONT ENTRANCE SIGN
LITE -PUSH THROUGH WHITE LETTERING



UFC EXTERIOR SIGNAGE CONCEPT
MARKET SQUARE VIEW

BLADE SIGN
DOUBLE SIDED
LITE - PUSH THROUGH WHITE LETTERING



SUBMITTAL PACKAGE

REVISIONS		
REV #	DATE	DESCRIPTION

UFC GYM EXTERIOR
SIGNAGE

Forbes Ave
Pittsburgh, PA

TSR PROJECT #
1487



2934 Smallman St. Pittsburgh, PA
412.281.3538 - tsrepro.com

PROJECT:
UFC GYM EXTERIOR
SIGNAGE
Forbes Ave
Pittsburgh, PA

PM:	TN	DATE:	05/25/22
-----	----	-------	----------

NAME:
Cover Sheet

Legal Disclaimer
These plans are the exclusive property of Tri-State Signs and Reprographics, Inc. and are the result of original work of its employees. Distribution or exhibition of these plans to others is prohibited. These plans may not be used to design or construct similar signs to the designs embedded within without express written permission. In the event these plans are reveled to anyone outside your organization the user agrees to compensate Tri-State Signs & Reprographics, Inc. for reasonable damages as provided by Local, State and Federal law.

APPROVED: _____
REJECTED : _____
BY: _____
DATE: _____

SP1.0

				<div>REVISIONS</div> <table><tr><th>REV #</th><th>DATE</th><th>DESCRIPTION</th></tr><tr><td></td><td></td><td></td></tr><tr><td></td><td></td><td></td></tr><tr><td></td><td></td><td></td></tr><tr><td></td><td></td><td></td></tr></table>			REV #	DATE	DESCRIPTION																																																														
REV #	DATE	DESCRIPTION																																																																					
<div>SIGN SCHEDULE</div> <table><tr><th>MARK</th><th>DESCRIPTION</th><th>COLOR</th><th>QTY</th></tr><tr><td>S1</td><td>Corner Sign</td><td>See Details</td><td>1</td></tr><tr><td></td><td></td><td></td><td></td></tr><tr><td>S2</td><td>Building Mounted Sign</td><td>See Details</td><td>2</td></tr><tr><td></td><td></td><td></td><td></td></tr></table>				MARK	DESCRIPTION	COLOR	QTY	S1	Corner Sign	See Details	1					S2	Building Mounted Sign	See Details	2					<div>SIGNS BILL OF MATERIALS</div> <table><tr><th>MARK</th><th>DESCRIPTION</th><th>COLOR</th><th>QTY</th></tr><tr><td></td><td>Corner Sign - 114"x36"x5"</td><td></td><td>1</td></tr><tr><td>S1</td><td>CORNER SIGN BOX WITH PUSH THROUGH LETTERS - 2 SIDED</td><td>SEE COLOR CHART</td><td>1</td></tr><tr><td>SB1</td><td>CORNER SIGN MOUNTING BRACKET</td><td>TBD</td><td>1</td></tr><tr><td>FAS1</td><td>$\frac{5}{8}$"Øx8" - HILTI EPOXY THREADED ANCHOR BOLTS, NUTS AND WASHERS. CONFIRM WITH HILTI TYPE OF EPOXY AND DEPTH OF HOLE TO BE USED</td><td>STAINLESS STEEL</td><td>10</td></tr><tr><td>FAS2</td><td>$\frac{1}{4}$"X1-1/2" TEK-5</td><td>STAINLESS STEEL</td><td>10</td></tr><tr><td>FAS3</td><td>$\frac{1}{8}$"X1" SELF DRILLING-SELF TAPPING</td><td>STAINLESS STEEL</td><td>16</td></tr><tr><td></td><td>Building Mount Sign - 114"x36"x5"</td><td></td><td>2</td></tr><tr><td>S2</td><td>BUILDING MOUNTED SIGN BOX WITH PUSH THROUGH LETTERS</td><td>SEE COLOR CHART</td><td>2</td></tr><tr><td>FAS2</td><td>$\frac{1}{4}$"X1-1/2" TEK-5</td><td></td><td>17</td></tr><tr><td>FAS3</td><td>$\frac{1}{8}$"X1" SELF DRILLING-SELF TAPPING</td><td></td><td>16</td></tr></table>				MARK	DESCRIPTION	COLOR	QTY		Corner Sign - 114"x36"x5"		1	S1	CORNER SIGN BOX WITH PUSH THROUGH LETTERS - 2 SIDED	SEE COLOR CHART	1	SB1	CORNER SIGN MOUNTING BRACKET	TBD	1	FAS1	$\frac{5}{8}$ "Øx8" - HILTI EPOXY THREADED ANCHOR BOLTS, NUTS AND WASHERS. CONFIRM WITH HILTI TYPE OF EPOXY AND DEPTH OF HOLE TO BE USED	STAINLESS STEEL	10	FAS2	$\frac{1}{4}$ "X1-1/2" TEK-5	STAINLESS STEEL	10	FAS3	$\frac{1}{8}$ "X1" SELF DRILLING-SELF TAPPING	STAINLESS STEEL	16		Building Mount Sign - 114"x36"x5"		2	S2	BUILDING MOUNTED SIGN BOX WITH PUSH THROUGH LETTERS	SEE COLOR CHART	2	FAS2	$\frac{1}{4}$ "X1-1/2" TEK-5		17	FAS3	$\frac{1}{8}$ "X1" SELF DRILLING-SELF TAPPING		16
MARK	DESCRIPTION	COLOR	QTY																																																																				
S1	Corner Sign	See Details	1																																																																				
S2	Building Mounted Sign	See Details	2																																																																				
MARK	DESCRIPTION	COLOR	QTY																																																																				
	Corner Sign - 114"x36"x5"		1																																																																				
S1	CORNER SIGN BOX WITH PUSH THROUGH LETTERS - 2 SIDED	SEE COLOR CHART	1																																																																				
SB1	CORNER SIGN MOUNTING BRACKET	TBD	1																																																																				
FAS1	$\frac{5}{8}$ "Øx8" - HILTI EPOXY THREADED ANCHOR BOLTS, NUTS AND WASHERS. CONFIRM WITH HILTI TYPE OF EPOXY AND DEPTH OF HOLE TO BE USED	STAINLESS STEEL	10																																																																				
FAS2	$\frac{1}{4}$ "X1-1/2" TEK-5	STAINLESS STEEL	10																																																																				
FAS3	$\frac{1}{8}$ "X1" SELF DRILLING-SELF TAPPING	STAINLESS STEEL	16																																																																				
	Building Mount Sign - 114"x36"x5"		2																																																																				
S2	BUILDING MOUNTED SIGN BOX WITH PUSH THROUGH LETTERS	SEE COLOR CHART	2																																																																				
FAS2	$\frac{1}{4}$ "X1-1/2" TEK-5		17																																																																				
FAS3	$\frac{1}{8}$ "X1" SELF DRILLING-SELF TAPPING		16																																																																				
<div>COLOR CHART</div> <table><tr><th>MARK</th><th>DESCRIPTION</th><th>COLOR</th><th>QTY</th></tr><tr><td>S1</td><td>Corner Sign</td><td></td><td>1</td></tr><tr><td>Letters</td><td>$\frac{3}{4}$" Thick Acrylic</td><td>White</td><td></td></tr><tr><td>Sign Box</td><td>Aluminum</td><td>Black</td><td></td></tr><tr><td>Sign Bracket</td><td>Steel</td><td>Black</td><td></td></tr><tr><td>S2</td><td>Building Mounted Sign</td><td></td><td>2</td></tr><tr><td>Letters</td><td>$\frac{3}{4}$" Thick Acrylic</td><td>White</td><td></td></tr><tr><td>Sign Box</td><td>Aluminum</td><td>Black</td><td></td></tr></table>				MARK	DESCRIPTION	COLOR	QTY	S1	Corner Sign		1	Letters	$\frac{3}{4}$ " Thick Acrylic	White		Sign Box	Aluminum	Black		Sign Bracket	Steel	Black		S2	Building Mounted Sign		2	Letters	$\frac{3}{4}$ " Thick Acrylic	White		Sign Box	Aluminum	Black																																					
MARK	DESCRIPTION	COLOR	QTY																																																																				
S1	Corner Sign		1																																																																				
Letters	$\frac{3}{4}$ " Thick Acrylic	White																																																																					
Sign Box	Aluminum	Black																																																																					
Sign Bracket	Steel	Black																																																																					
S2	Building Mounted Sign		2																																																																				
Letters	$\frac{3}{4}$ " Thick Acrylic	White																																																																					
Sign Box	Aluminum	Black																																																																					
<div>Legal Disclaimer</div> <p>These plans are the exclusive property of Tri-State Signs and Reprographics, Inc. and are the result of original work of its employees. Distribution or exhibition of these plans to others is prohibited. These plans may not be used to design or construct similar signs to the designs embedded within without express written permission. In the event these plans are reveled to anyone outside your organization the user agrees to compensate Tri-State Signs & Reprographics, Inc. for reasonable damages as provided by Local, State and Federal law.</p>				<div>APPROVED: _____</div> <div>REJECTED : _____</div> <div>BY: _____</div> <div>DATE: _____</div>																																																																			

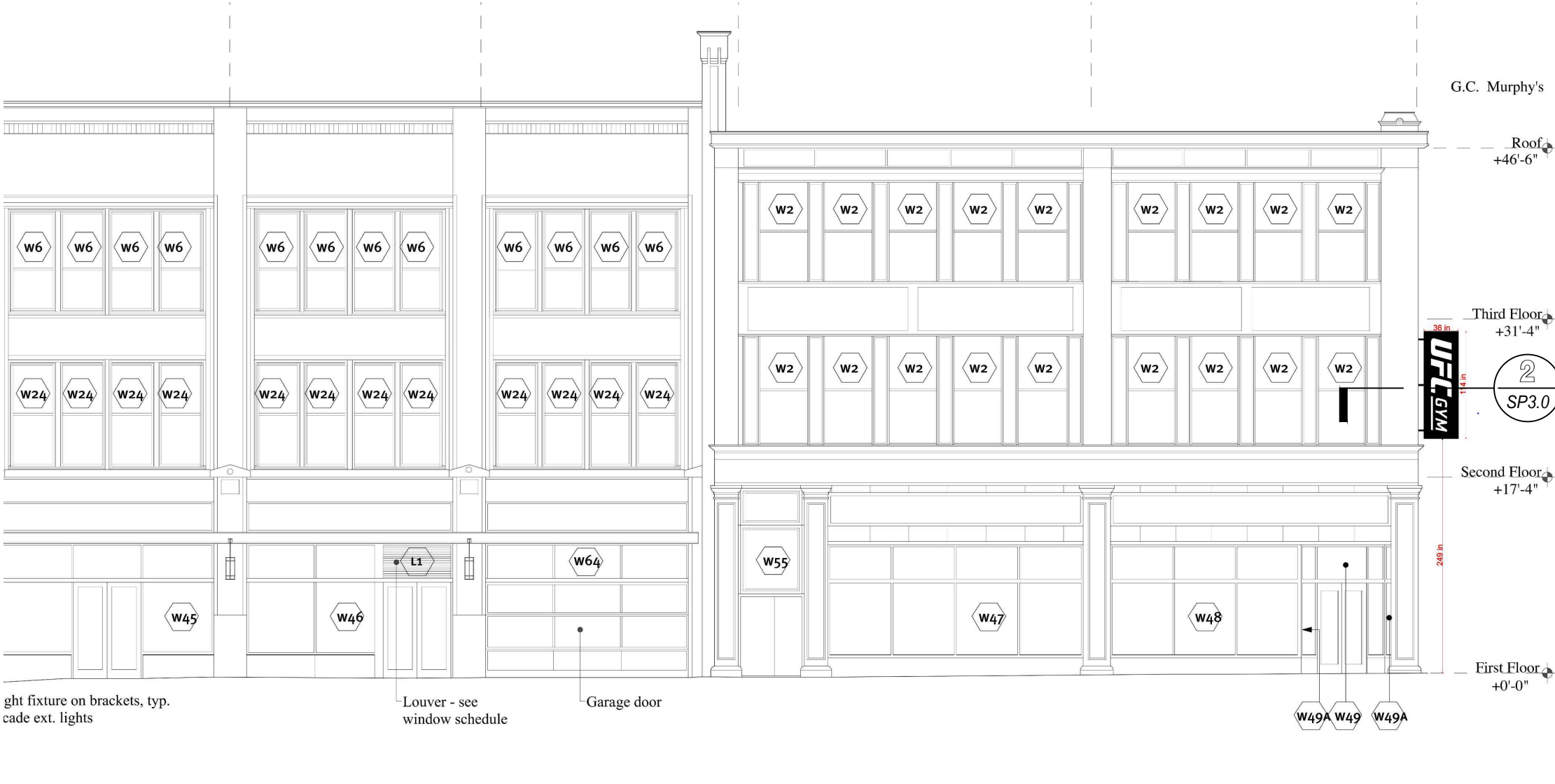


PROJECT:
UFC GYM EXTERIOR
SIGNAGE
Forbes Ave
Pittsburgh, PA

PM:	TN	DATE:	05/25/22
-----	----	-------	----------

NAME:
Schedules, Bill
of Materials

SP1.1



REVISIONS		
REV #	DATE	DESCRIPTION

1

SP2.0

SIGN GRAPHIC - CORNER SIGN ELEVATION

SCALE: NTS

A/R:

Legal Disclaimer

These plans are the exclusive property of Tri-State Signs and Reprographics, Inc. and are the result of original work of its employees. Distribution or exhibition of these plans to others is prohibited. These plans may not be used to design or construct similar signs to the designs embedded within without express written permission. In the event these plans are revealed to anyone outside your organization the user agrees to compensate Tri-State Signs & Reprographics, Inc. for reasonable damages as provided by Local, State and Federal law.

APPROVED: _____

REJECTED : _____

BY: _____

DATE: _____

2934 Smallman St. Pittsburgh, PA
412.281.3538 - tsrepro.com

TRI-STATE

SIGNS & REPROGRAPHICS, INC.

PROJECT:

UFC GYM EXTERIOR
SIGNAGE
Forbes Ave
Pittsburgh, PA

PM:

TN

DATE:

05/25/22

NAME:

Corner Sign
Elevation

SP2.0

REVISIONS		
REV #	DATE	DESCRIPTION

2934 Smallman St. Pittsburgh, PA
412.281.3538 - tsrepro.com

TRI-STATE

SIGNS & REPROGRAPHICS, INC.

PROJECT:
UFC GYM EXTERIOR
SIGNAGE
Forbes Ave
Pittsburgh, PA

PM:	TN
DATE:	05/25/22

NAME:
Forbes Ave
Elevation

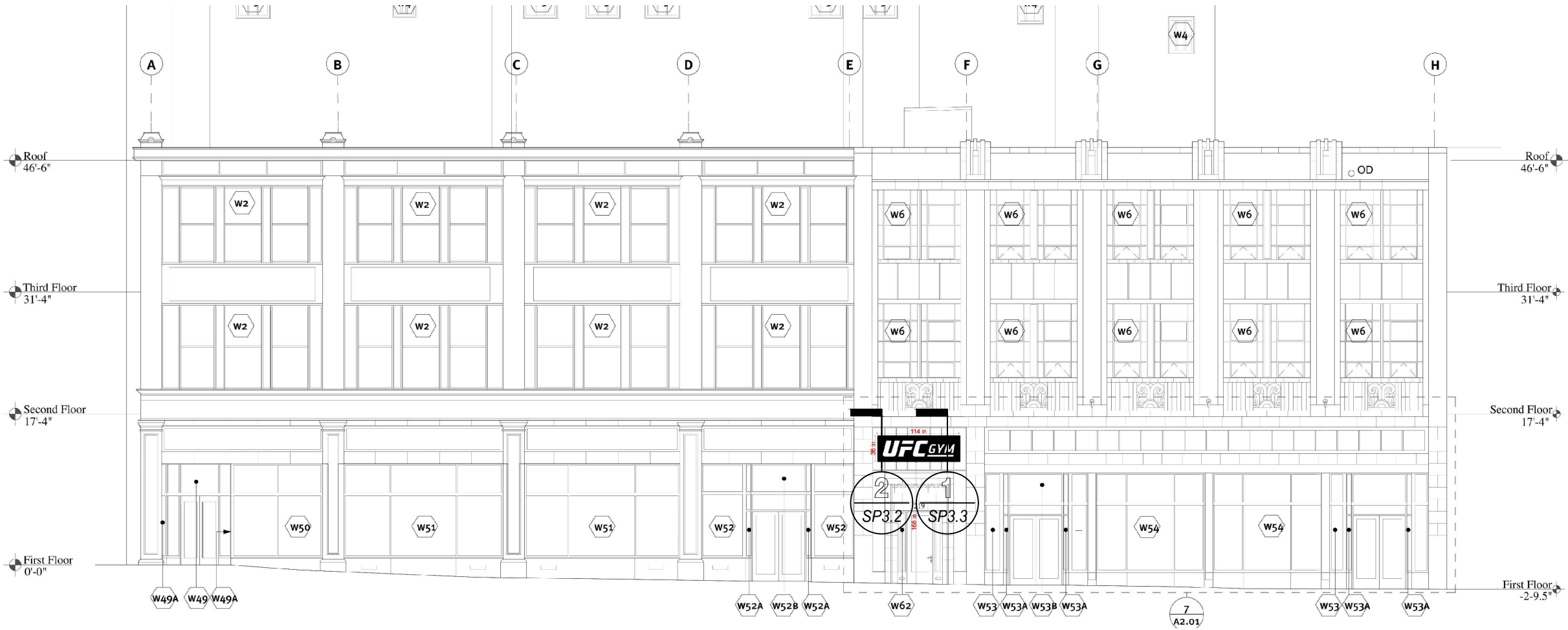
SP2.1

APPROVED: _____

REJECTED : _____

BY: _____

DATE: _____



1

FORBES AVENUE ELEVATION

SCALE: 1/8" = 1'-0"

1

SIGN GRAPHIC - FORBES AVE. ELEVATION

SCALE: NTS

A/R:

Legal Disclaimer

These plans are the exclusive property of Tri-State Signs and Reprographics, Inc. and are the result of original work of its employees. Distribution or exhibition of these plans to others is prohibited. These plans may not be used to design or construct similar signs to the designs embedded within without express written permission. In the event these plans are revealed to anyone outside your organization the user agrees to compensate Tri-State Signs & Reprographics, Inc. for reasonable damages as provided by Local, State and Federal law.

REVISIONS		
REV #	DATE	DESCRIPTION

2934 Smallman St. Pittsburgh, PA
412.281.3538 - tsrepro.com

TRI-STATE

SIGNS & REPROGRAPHICS, INC.

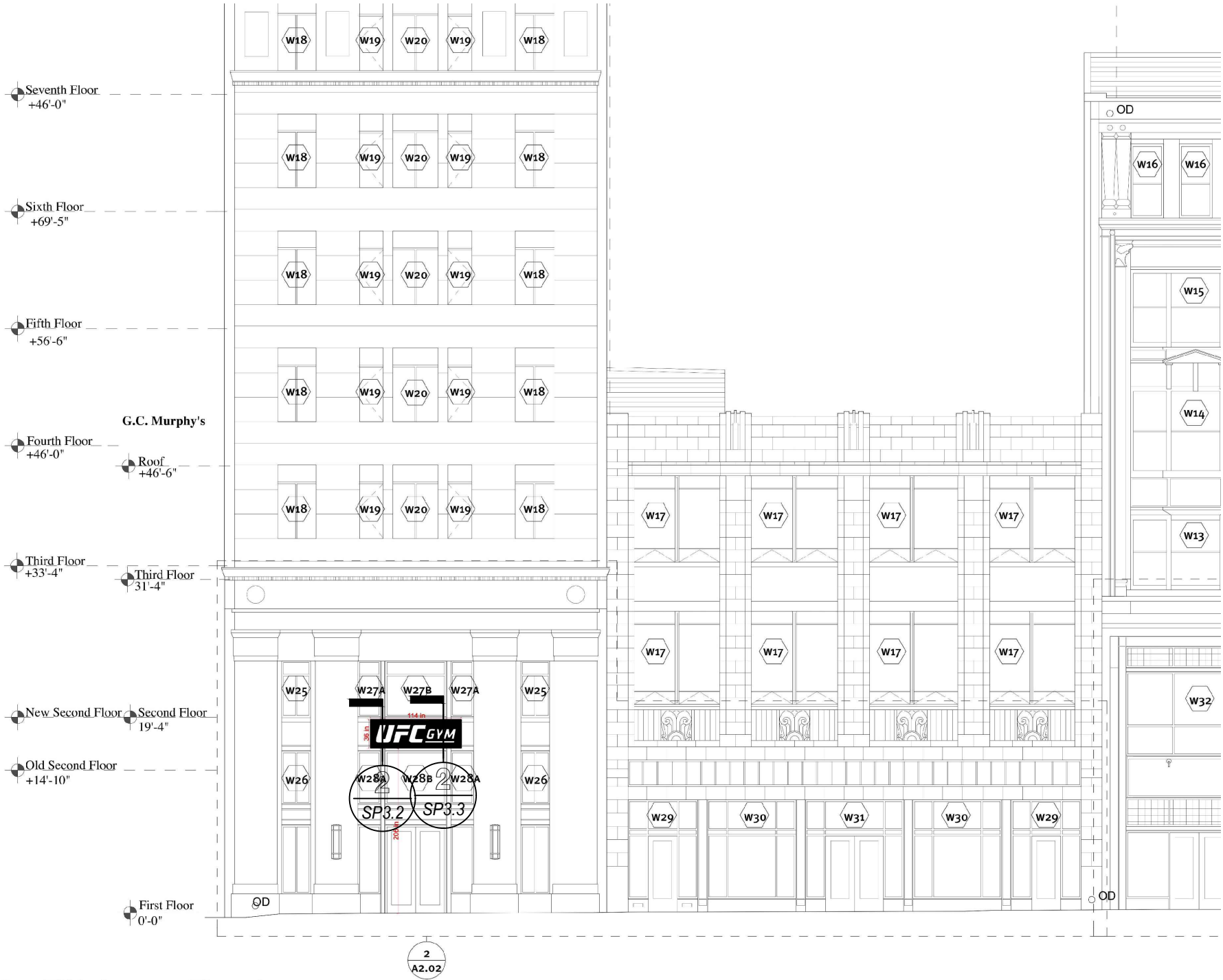
PROJECT:
UFC GYM EXTERIOR
SIGNAGE
Forbes Ave
Pittsburgh, PA

PM:
TN

DATE:
05/25/22

NAME:
Fifth Ave
Elevation

SP2.2



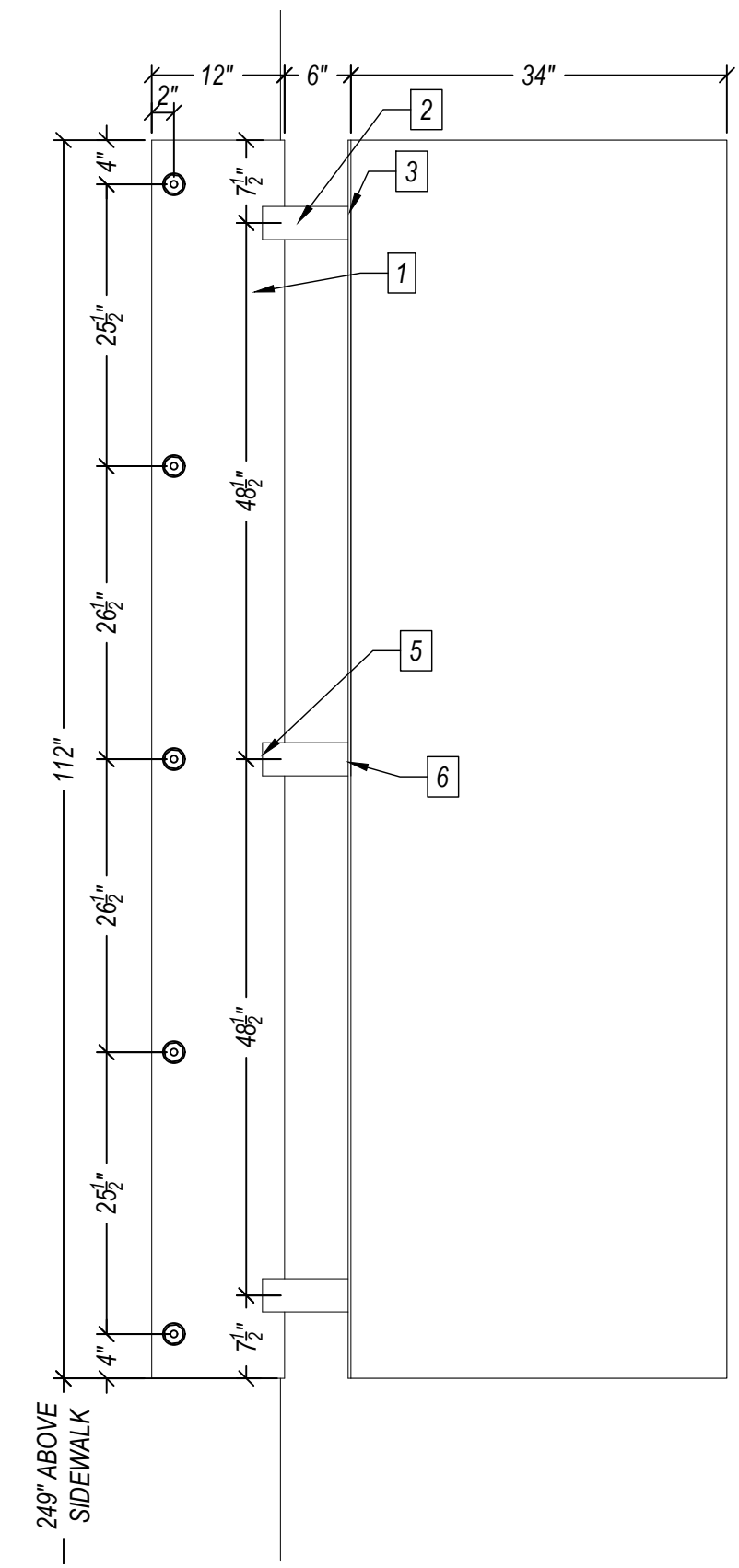
1 Fifth Avenue Elevation
A2.02 SCALE: 1/8" = 1'-0"

1 SIGN GRAPHIC - FIFTH AVE. ELEVATION
SP2.2 SCALE: NTS A/R:

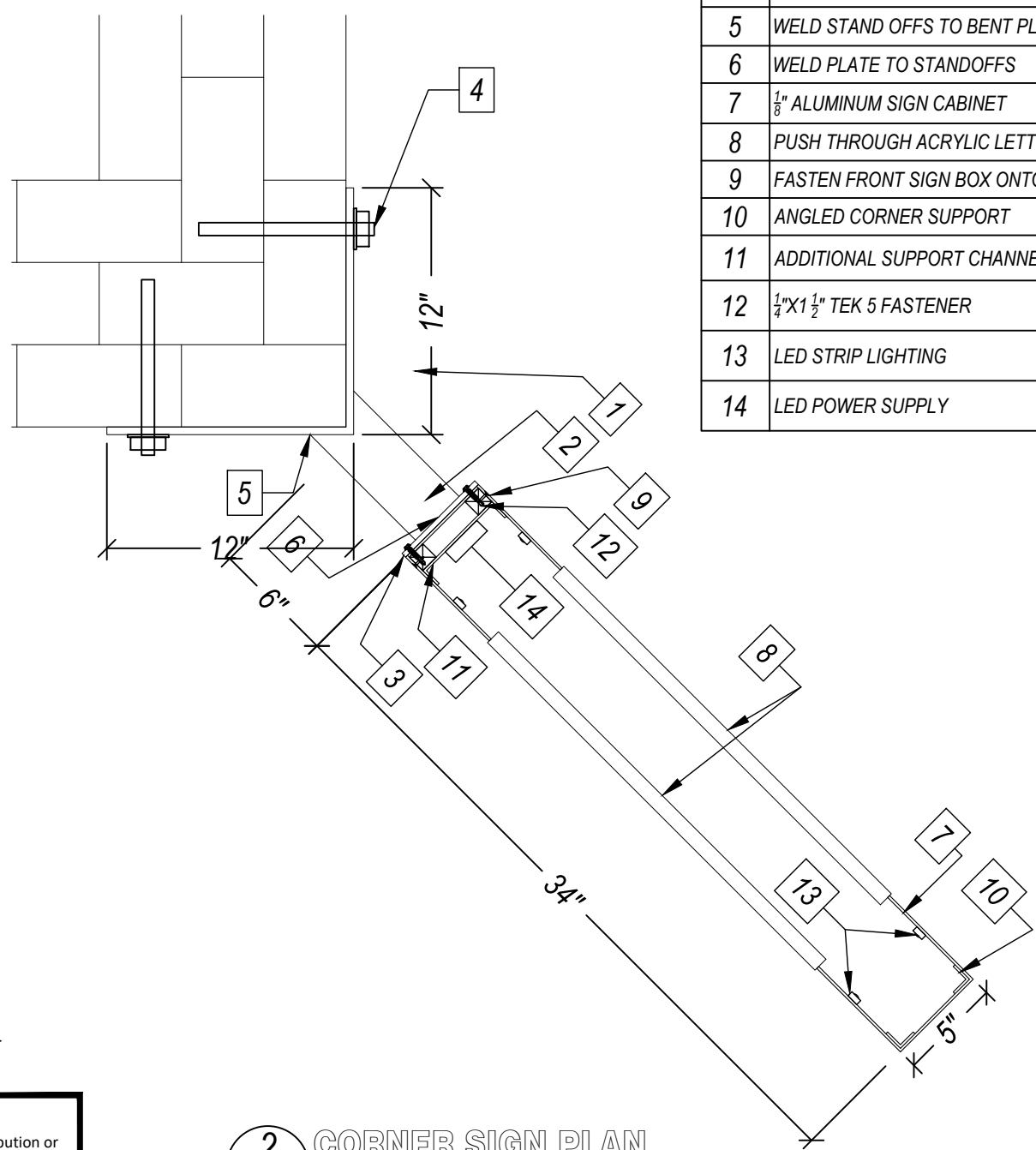
Legal Disclaimer

These plans are the exclusive property of Tri-State Signs and Reprographics, Inc. and are the result of original work of its employees. Distribution or exhibition of these plans to others is prohibited. These plans may not be used to design or construct similar signs to the designs embedded within without express written permission. In the event these plans are revealed to anyone outside your organization the user agrees to compensate Tri-State Signs & Reprographics, Inc. for reasonable damages as provided by Local, State and Federal law.

APPROVED: _____
REJECTED : _____
BY: _____
DATE: _____



1 CORNER SIGN ELEVATION - QTY 1
SP3.0 SCALE: 3/4" = 1'-0" A/R:



2 CORNER SIGN PLAN
SP3.0 SCALE: 1 1/2" = 1'-0" A/R:

GENERAL ASSEMBLY NOTES	
#	NOTE
1	ASSUME FULL BRICK EXTERIOR BEARING WALL OR CMU AND FACE BRICK. VERIFY IN FIELD

REVISIONS		
REV #	DATE	DESCRIPTION

KEY NOTES		
#	DESCRIPTION / MATERIAL	FINISH
1	3/8" BENT PLATE BRACKET	BLACK
2	3"x3" TUBE STEEL STANDOFF	BLACK
3	1/4" PLATE FOR SIGN MOUNTING	BLACK
4	5/8"Øx8" - HILTI EPOXY THREADED ANCHOR BOLTS, NUTS AND WASHERS. CONFIRM WITH HILTI TYPE OF EPOXY AND DEPTH OF HOLE TO BE USED	
5	WELD STAND OFFS TO BENT PLATE	
6	WELD PLATE TO STANDOFFS	
7	1/8" ALUMINUM SIGN CABINET	see Color Chart
8	PUSH THROUGH ACRYLIC LETTERS	see Color Chart
9	FASTEN FRONT SIGN BOX ONTO BACK PLATE WITH S.S. SCREWS	
10	ANGLED CORNER SUPPORT	
11	ADDITIONAL SUPPORT CHANNEL	
12	1/4"x1 1/2" TEK 5 FASTENER	STAINLESS STEEL
13	LED STRIP LIGHTING	
14	LED POWER SUPPLY	

Legal Disclaimer

These plans are the exclusive property of Tri-State Signs and Reprographics, Inc. and are the result of original work of its employees. Distribution or exhibition of these plans to others is prohibited. These plans may not be used to design or construct similar signs to the designs embedded within without express written permission. In the event these plans are reveled to anyone outside your organization the user agrees to compensate Tri-State Signs & Reprographics, Inc. for reasonable damages as provided by Local, State and Federal law.

APPROVED: _____
REJECTED : _____
BY: _____
DATE: _____

PROJECT:
UFC GYM EXTERIOR
SIGNAGE
Forbes Ave
Pittsburgh, PA

PM:
TN

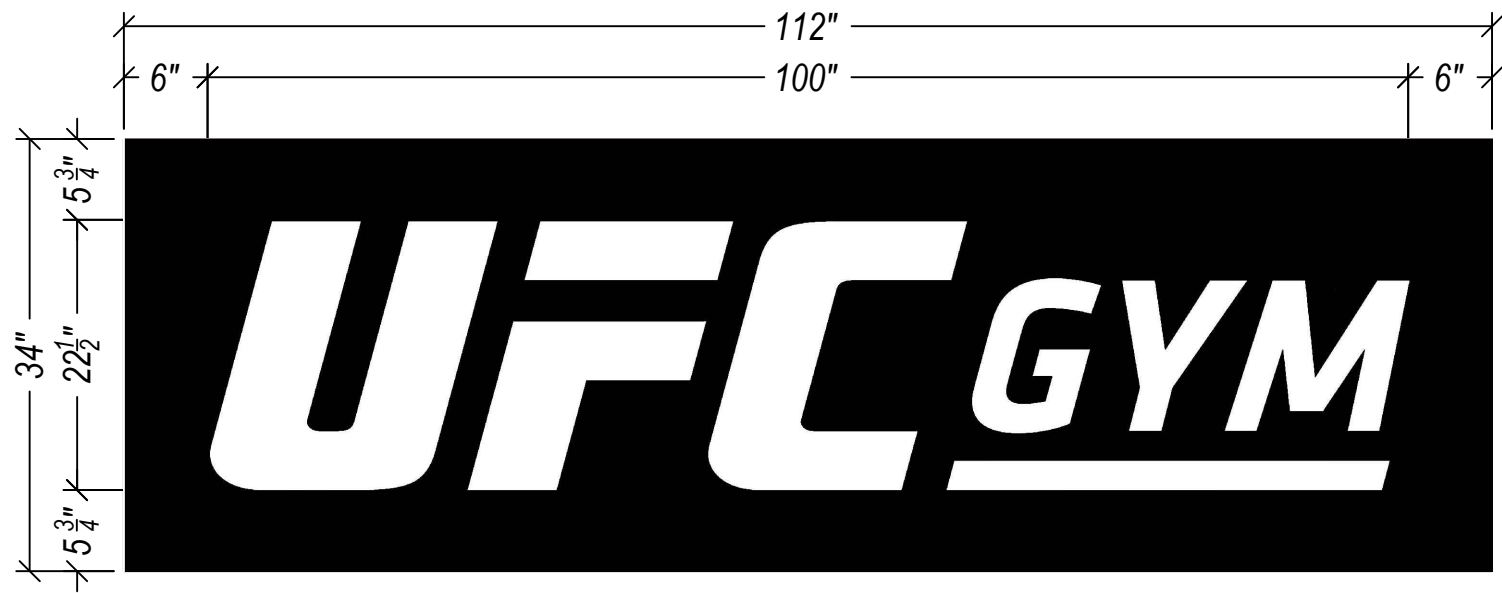
DATE:
05/25/22

NAME:
Mounting
Bracket Plan
& Elevation

SP3.0

2934 Smallman St. Pittsburgh, PA
412.281.3538 - tsrepro.com

TRI-STATE
SIGNS & REPROGRAPHICS, INC.

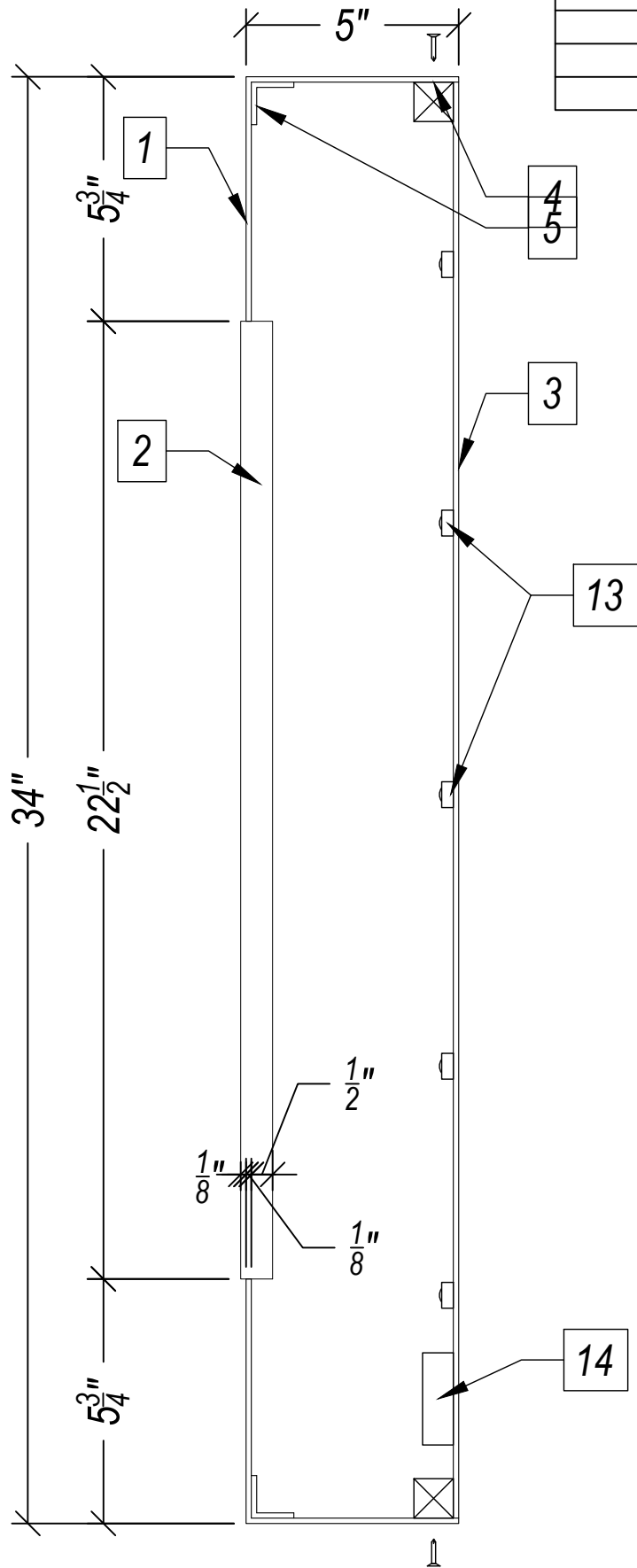


1 PUSH THROUGH LETTER SIGN - QTY - 2
SP3.1 SCALE: 3/4" = 1'-0" A/R:

GENERAL ASSEMBLY NOTES	
#	NOTE
1	SEE MOUNTING DETAILS ON SP3.2

KEY NOTES		
#	DESCRIPTION / MATERIAL	FINISH
1	1/8" ALUMINUM SIGN CABINET	See Color Chart
2	PUSH THROUGH ACRYLIC LETTERS	See Color Chart
3	1/8" BACK PLATE FOR SIGN MOUNTING	See Color Chart
4	FASTEN FRONT SIGN BOX ONTO BACK PLATE WITH S.S. SCREWS	
5	ANGLED CORNER SUPPORT	

Legal Disclaimer
These plans are the exclusive property of Tri-State Signs and Reprographics, Inc. and are the result of original work of its employees. Distribution or exhibition of these plans to others is prohibited. These plans may not be used to design or construct similar signs to the designs embedded within without express written permission. In the event these plans are revealed to anyone outside your organization the user agrees to compensate Tri-State Signs & Reprographics, Inc. for reasonable damages as provided by Local, State and Federal law.



2 SECTION
SP3.1 SCALE: 3" = 1'-0" A/R:

REVISIONS		
REV #	DATE	DESCRIPTION

APPROVED: _____
REJECTED : _____
BY: _____
DATE: _____


PROJECT:
UFC GYM EXTERIOR
SIGNAGE
Forbes Ave
Pittsburgh, PA

PM:
TN

DATE:
05/25/22

NAME:
Push
Through Sign
Details

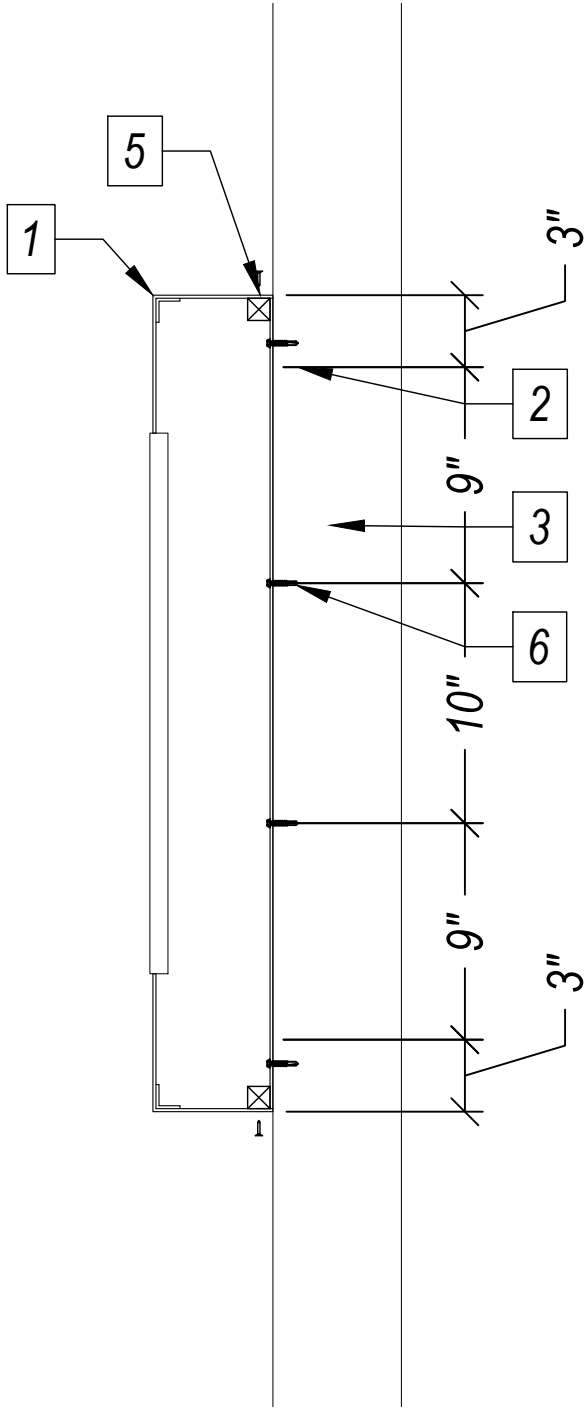
SP3.1

**TRI-STATE**
SIGNS & REPROGRAPHICS, INC.

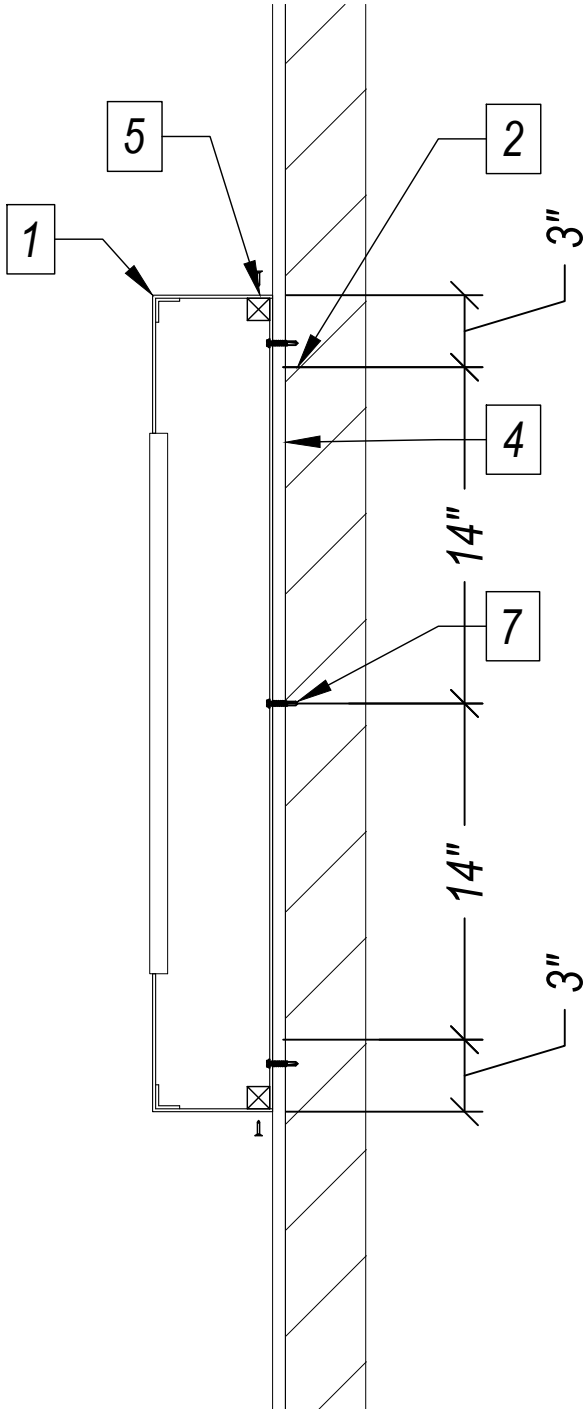
2934 Smallman St. Pittsburgh, PA
412.281.3538 - tsrepro.com

REVISIONS		
REV #	DATE	DESCRIPTION

KEY NOTES		
#	DESCRIPTION / MATERIAL	QTY
1	S2 SIGN	2
2	FAS2	17
3	EXISTING ALUMINUM MULLION	
4	EXISTING METAL PANEL	
5	FASTEN FRONT SIGN BOX ONTO BACK PLATE WITH FAS 3	
6	4 - FAS2 PER MULLION VERIFY MULLION LOCATIONS - SPACE PER SECTION - 8 TOTAL	
7	3 - FAS2 VERTICALLY - SPACED EVENLY ACROSS EXISTING METAL - 9 TOTAL	



1 SECTION - MULLION MOUNT
SP3.2 SCALE: 1 1/2" = 1'-0" A/R:



2 SECTION - BUILDING MOUNT
SP3.2 SCALE: 1 1/2" = 1'-0" A/R:

Legal Disclaimer
These plans are the exclusive property of Tri-State Signs and Reprographics, Inc. and are the result of original work of its employees. Distribution or exhibition of these plans to others is prohibited. These plans may not be used to design or construct similar signs to the designs embedded within without express written permission. In the event these plans are revealed to anyone outside your organization the user agrees to compensate Tri-State Signs & Reprographics, Inc. for reasonable damages as provided by Local, State and Federal law.

APPROVED: _____
REJECTED : _____
BY: _____
DATE: _____

PROJECT:
UFC GYM EXTERIOR
SIGNAGE
Forbes Ave
Pittsburgh, PA

PM:
TN
DATE:
05/25/22

NAME:
Sign
Mounting
Details

SP3.2

TRI-STATE
SIGNS & REPROGRAPHICS, INC.

2934 Smallman St. Pittsburgh, PA
412.281.3538 - tsrepro.com