



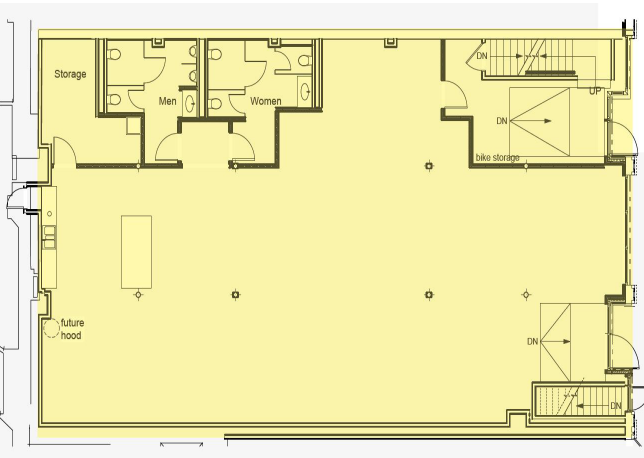
For Lease

340 Third Avenue
Pittsburgh, PA 15222

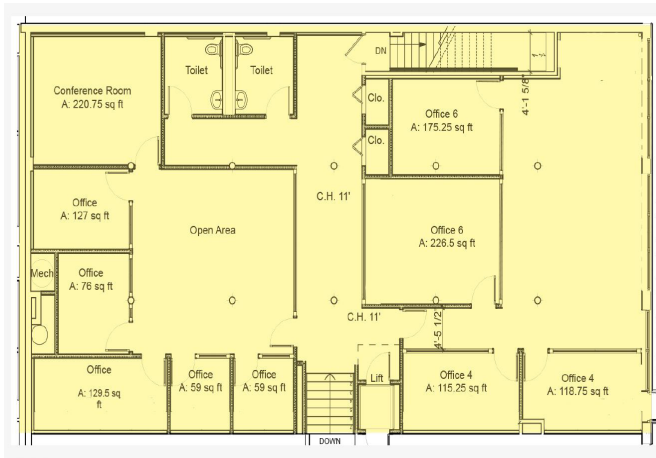
Property Highlights

- Single tenant - signature building with exterior signage opportunity
- 1st floor - approximately 3,474 RSF and 2nd floor - 3,474 RSF for total of approximately 6,948 RSF
- Prime downtown location with convenient access to the Smithfield Street Bridge
- Close proximity to numerous parking options including the Mon-Wharf Landing
- Open layout with loft ceiling and large windows providing abundant natural light
- Shared conference center available to tenants
- One block from PPG Place
- Walkable to Market Square Amenities

PBM Partners LLC
mblum@hip-cap.com



First Floor
3,474 RSF



Second Floor
3,474 RSF
(Sample Test Fit)

