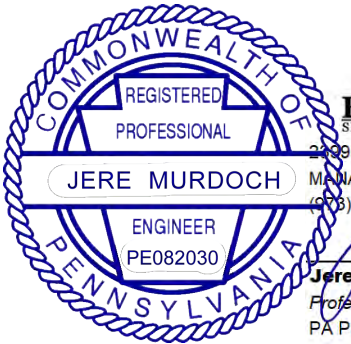


REV. #	DATE	DESCRIPTION
0	09-21-2021	Original Drawing Completion
1	10-07-2021	Add Missing Signs to Package
2	10-21-2021	Revise per Customer Comments
3	11-01-2021	Revise Signs A1, A3 and B1 as Requested

DESIGN SPECIFICATIONS	
IBC 2015 with Pittsburgh amendments	
ASCE 7-10	Minimum Design Loads for Buildings & Other Structures
ACI 318-14	Building Code Requirements for Structural Concrete
ANSI/AISC 360-10	Specification for Structural Steel Buildings
DESIGN LOADS	
Wind	Vult = 115 mph
Exposure	C
Risk Cat.	II
Grnd. Snow	Pg = 30 psf

FIFTH AVENUE PLACE

120 Fifth Avenue
Pittsburgh, PA 15222
#210247



MURDOCH ENGINEERING
SIGN STRUCTURE PROFESSIONALS

2009 A-2 NJ-34
MANASQUAN, NJ 08736
(908) 570-8215

Jere Murdoch
Jere Murdoch, PE
Professional Engineer
PA PE Lic. #PE082030

11/8/2021

PAGE MUST BE PRINTED ON 11" x 17" PAPER FOR SCALE TO BE ACCURATE


Notice and Disclaimer | Intellectual Property Notice | Copyright Notice

"These plans are the exclusive property of Shamrock Building Services Incorporated and are the result of the original work of its employees. Distribution or exhibition of these plans to anyone other than employees of your company or use of these plans to design or construct a sign similar to the sign embodied herein is not permitted without the express written consent of Shamrock Building Services Incorporated. In the event such permission is given the user agrees to compensate Shamrock Building Services Incorporated a reasonable fee for the time and effort spent creating these plans. These plans contain proprietary and confidential information. Shamrock Building Services Incorporated retains ownership, copyright, and intellectual property rights to the proprietary processes described in these plans. In the event that the proprietary processes contained in these plans are revealed to anyone outside of your company the user agrees to compensate Shamrock Building Services reasonable damages as provided by Local, State, and Federal law."

Copyright 2016 Shamrock Building Services



DESIGN SPECIFICATIONS	
IBC 2015 with Pittsburgh amendments	
ASCE 7-10	Minimum Design Loads for Buildings & Other Structures
ACI 318-14	Building Code Requirements for Structural Concrete
ANSI/AISC 360-10	Specification for Structural Steel Buildings
DESIGN LOADS	
Wind	Vult = 115 mph
Exposure	C
Risk Cat.	II
Grnd. Snow	Pg = 30 psf




MURDOCH ENGINEERING
SIGN STRUCTURE PROFESSIONALS

2399 A-2 NJ-34
MANASQUAN, NJ 08736
(973) 570-8215 x0

Jere Murdoch
11/8/2021

Jere Murdoch, PE
Professional Engineer
PA PE Lic. #PE082030



DESIGNER TO PROVIDE TWO COLOR CHIPS OF EACH COLOR FOR PAINT MATCHING

SIGN TYPE	SIGN DESCRIPTION	COLOR(S)	QUANTITY
SIGN TYPE A1	Fabricated Aluminum, Halo-Lit,		1 (See Pg 5)
CL-30-WLD-HALO-REM	Reverse Channel Letters with	■ Faces and Returns to	
	Surface Painted Finish, Clear Poly-	Match RAL 9023 Pearl Grey	
	carbonate Backs with Diffuser and	Old Castle : Pewter 399B026	
	Projected Mounted with Fully Threaded	Sample to be Provided	
	SST Studs and Spacers		
SIGN TYPE A2	Fabricated Aluminum, Non-Illuminated		1 (See Pg 6)
CL-20-WLD-NIL	Reverse Channel Letters with	■ Faces and Returns to	
	Surface Painted Finish and Flush	Match RAL 9023 Pearl Grey	
	Mounted with Fully Threaded SST	Old Castle : Pewter 399B026	
	Studs and Spacers	Sample to be Provided	
SIGN TYPE A3	Fabricated Aluminum, Halo-Lit,		1 (See Pg 7)
CL-27-WLD-HALO-REM	Reverse Channel Letters with	■ Faces and Returns to	
	Surface Painted Finish, Clear Poly-	Match RAL 9023 Pearl Grey	
	carbonate Backs with Diffuser and	Old Castle : Pewter 399B026	
	Projected Mounted with Fully Threaded	Sample to be Provided	
	SST Studs and Spacers		
SIGN TYPE A4	Fabricated Aluminum, Non-Illuminated		1 (See Pg 8)
CL-17-WLD-NIL	Reverse Channel Letters with Closed	■ Faces and Returns to	
	Backs andSurface Painted Finish.	Match RAL 9023 Pearl Grey	
	Mounted to Canopy TO BE	Old Castle : Pewter 399B026	
	DETERMINED VIA FIELD SURVEY	Sample to be Provided	

REV. #	DATE	DESCRIPTION
0	09-21-2021	Original Drawing Completion
1	10-07-2021	Add Missing Signs to Package
2	10-21-2021	Revise per Customer Comments

SIGN TYPE	SIGN DESCRIPTION	COLOR(S)	QUANTITY
SIGN TYPE B1	Double-Sided, Non-Illuminated Pylon		2 (See Pg 9)
PYL-104-29.25-DS-NIL	Sign with Fabricated Aluminum Rib	■ Painted Designer Color	
	with Surface Painted Finish and	M1 Brushed Metal	
	Etched and Infilled Lettering that is	■ Infill to Match RAL 9023	
	Attached to Fabricated Aluminum	Pearl Grey - Old Castle :	
	Sign Body with Changeable Message	Pewter 399B026	
	Panels Utilizing SignComp #1390 Body,	■ Panels Painted Designer	
	#1693 Access Body, #1679 Insert Panel	Color M2 - Old Castle :	
	Adapter, #1668 Insert Divider, #1698	Pewter 399B026	
	Insert End Cover and 0.125" Aluminum	■ Aluminum Lettering to	
	Sheet with Surface Painted Finish.	Match M1 Brushed Metal	
	Panels have Surface Mounted Lettering/	□ Aluminum Arrows	
	Graphics of Either 1/4" Acrylic or	Painted Designer Color C1	
	Computer Cut Lettering. Sign has 1/2"	White	
	Aluminum Reveal Plate at Bottom. Sign	□ Symbols, Copy to be	
	has Internal Steel Support Tube with	3M 7725-20 Matte White	
	Aluminum / Steel Angle Mounting System	Vinyl	
		■ Reveal Plate Painted	
		Designer Color M2 - Old	
		Castle : Pewter 399B026	

PAGE MUST BE PRINTED ON 11" x 17" PAPER FOR SCALE TO BE ACCURATE

Notice and Disclaimer | Intellectual Property Notice | Copyright Notice

"These plans are the exclusive property of Shamrock Building Services Incorporated and are the result of the original work of its employees. Distribution or exhibition of these plans to anyone other than employees of your company or use of these plans to design or construct a sign similar to the sign embodied herein is not permitted without the express written consent of Shamrock Building Services Incorporated. In the event such permission is given the user agrees to compensate Shamrock Building Services Incorporated a reasonable fee for the time and effort spent creating these plans. These plans contain proprietary and confidential information. Shamrock Building Services Incorporated retains ownership, copyright, and intellectual property rights to the proprietary processes described in these plans. In the event that the proprietary processes contained in these plans are revealed to anyone outside of your company the user agrees to compensate Shamrock Building Services reasonable damages as provided by Local, State, and Federal law."

Copyright 2016 Shamrock Building Services



DESIGN SPECIFICATIONS	
IBC 2015 with Pittsburgh amendments	
ASCE 7-10	Minimum Design Loads for Buildings & Other Structures
ACI 318-14	Building Code Requirements for Structural Concrete
ANSI/AISC 360-10	Specification for Structural Steel Buildings
DESIGN LOADS	
Wind	Vult = 115 mph
Exposure	C
Risk Cat.	II
Grnd. Snow	Pg = 30 psf

REV. #	DATE	DESCRIPTION
0	09-21-2021	Original Drawing Completion
1	10-07-2021	Add Missing Signs to Package
2	10-21-2021	Revise per Customer Comments

DESIGNER TO PROVIDE TWO COLOR CHIPS OF EACH COLOR FOR PAINT MATCHING

[illegible]

SIGN TYPE	SIGN DESCRIPTION	COLOR(S)	QUANTITY
SIGN TYPE C1.002	Single-Sided, Non-Illuminated Wall		2 (See Pg 13, 14)
WS-98-167.75-SS-NIL,	Signs with 2" x 2" x 1/8" Architectural	■ Face, Returns Painted to	
SIGN TYPE C1.001	Aluminum Angle Frame with 1/8"	Match RAL 9023 Pearl Grey	
WS-98-168-SS-NIL	Aluminum Sheet Faces that are	Old Castle : Pewter 399B02	
	Surface Painted. Header to have	■ Aluminum Lettering	
	Surface Mounted CNC Cut Out 1/2"	Painted Designer Color	
	Thick Acrylic Letters with Surface	M1 Brushed Metal	
	Painted Finish. Tenant Logos to be		
	Digitally Printed with Protective Over-		
	lamine and Surface Applied to the		
	Aluminum Face. Sign is Mechanically		
	Fastened to a Concealed Mounting		
	Frame with Lag Bolts and Shields		
SIGN TYPE D1	Single-Sided, Non-Illuminated Wall		2 (See Pg 16)
WS-10-14-SS-NIL	Sign of 1/4" Aluminum Plate that is	■ Face, Returns Painted to	
	Surface Painted and has CNC	Match RAL 9023 Pearl Grey	
	Engraved and Infilled Graphic and	Old Castle : Pewter 399B02	
	Text. Sign is Mounted Via 3M Double	■ Etched Graphics Infilled	
	Face VHB Foam Tape along with	with Designer Color M1	
	Silicone Adhesive	Brushed Metal	
SIGN TYPE E1	Individual CNC Cut Out 1/2" Thick	■ Face, Returns Painted to	1 (See Pg 17)
PL-8-SS-NIL	Acrylic Letters with Surface Painted	Match RAL 9023 Pearl Grey	
	Finish and Flush Mounted to Face	Old Castle : Pewter 399B02	
	of Bulkhead with Fully Threaded Studs		
	and Silicone Adhesive		

MURDOCH
ENGINEERING
SIGN STRUCTURE PROFESSIONALS

2399 A-2 NJ-34
MANASQUAN, NJ 08736
(973) 570-8215

Jere Murdoch

11/8/2021

Jere Murdoch, PE
Professional Engineer
PA PE Lic. #PE082030



PAGE MUST BE PRINTED ON 11" x 17" PAPER FOR SCALE TO BE ACCURATE

Notice and Disclaimer | Intellectual Property Notice | Copyright Notice

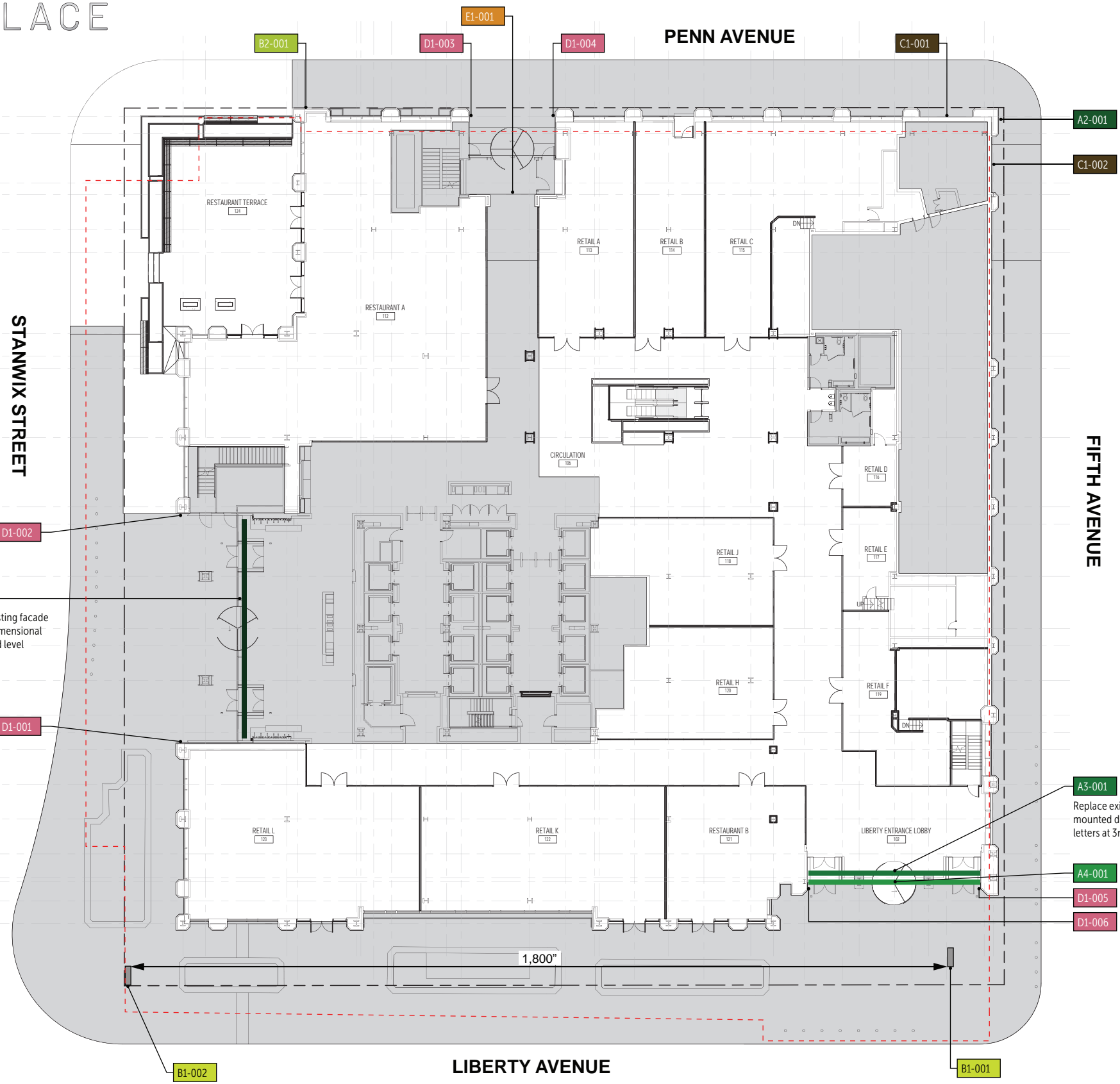
These plans are the exclusive property of Shamrock Building Services Incorporated and are the result of the original work of its employees. Distribution or exhibition of these plans to anyone other than employees of your company or use of these plans to design or construct a sign similar to the sign embodied herein is not permitted without the express written consent of Shamrock Building Services Incorporated. In the event such permission is given the user agrees to compensate Shamrock Building Services Incorporated a reasonable fee for the time and effort spent creating these plans. These plans contain proprietary and confidential information. Shamrock Building Services Incorporated retains ownership, copyright, and intellectual property rights to the proprietary processes described in these plans. In the event that the proprietary processes contained in these plans are revealed to anyone outside of your company the user agrees to compensate Shamrock Building Services reasonable damages as provided by Local, State, and Federal law."

Copyright 2016 Shamrock Building Services



DESIGN SPECIFICATIONS	
IBC 2015 with Pittsburgh amendments	
ASCE 7-10	Minimum Design Loads for Buildings & Other Structures
ACI 318-14	Building Code Requirements for Structural Concrete
ANSI/AISC 360-10	Specification for Structural Steel Buildings
DESIGN LOADS	
Wind	Vult = 115 mph
Exposure	C
Risk Cat.	II
Grnd. Snow	Pg = 30 psf

MURDOCH ENGINEERING
SIGN STRUCTURE PROFESSIONALS
2399 A-2 NJ-34
MANASQUAN, NJ 08736
(973) 570-8215 / 40
Jerre Murdoch
11/8/2021
Jerre Murdoch, PE
Professional Engineer
PA PE Lic. #PE082030



REV. #	DATE	DESCRIPTION
0	09-21-2021	Original Drawing Completion
1	11-01-2021	Add Red Line to Indicate Existing Garage Foundation Walls

- EXTERIOR**
QTY. DESCRIPTION
- 1 A1: Dimensional letters – large building facade mounted (non-illuminated)
 - 1 A2: Dimensional letters – medium building facade mounted (non-illuminated)
 - 1 A3: Dimensional letters – building facade mounted (illuminated)
 - 1 A4: Dimensional letters – canopy mounted (non-illuminated)
 - 2 B1: Pedestrian kiosk – monument
 - 1 B2: Pedestrian kiosk – wall mounted
 - 2 C1: Retail list – (replace existing)
 - 6 D1: Instruction/Message plaque – (Smoke Free Campus)
 - 1 E1: Dimensional letters (on interior bulkhead)

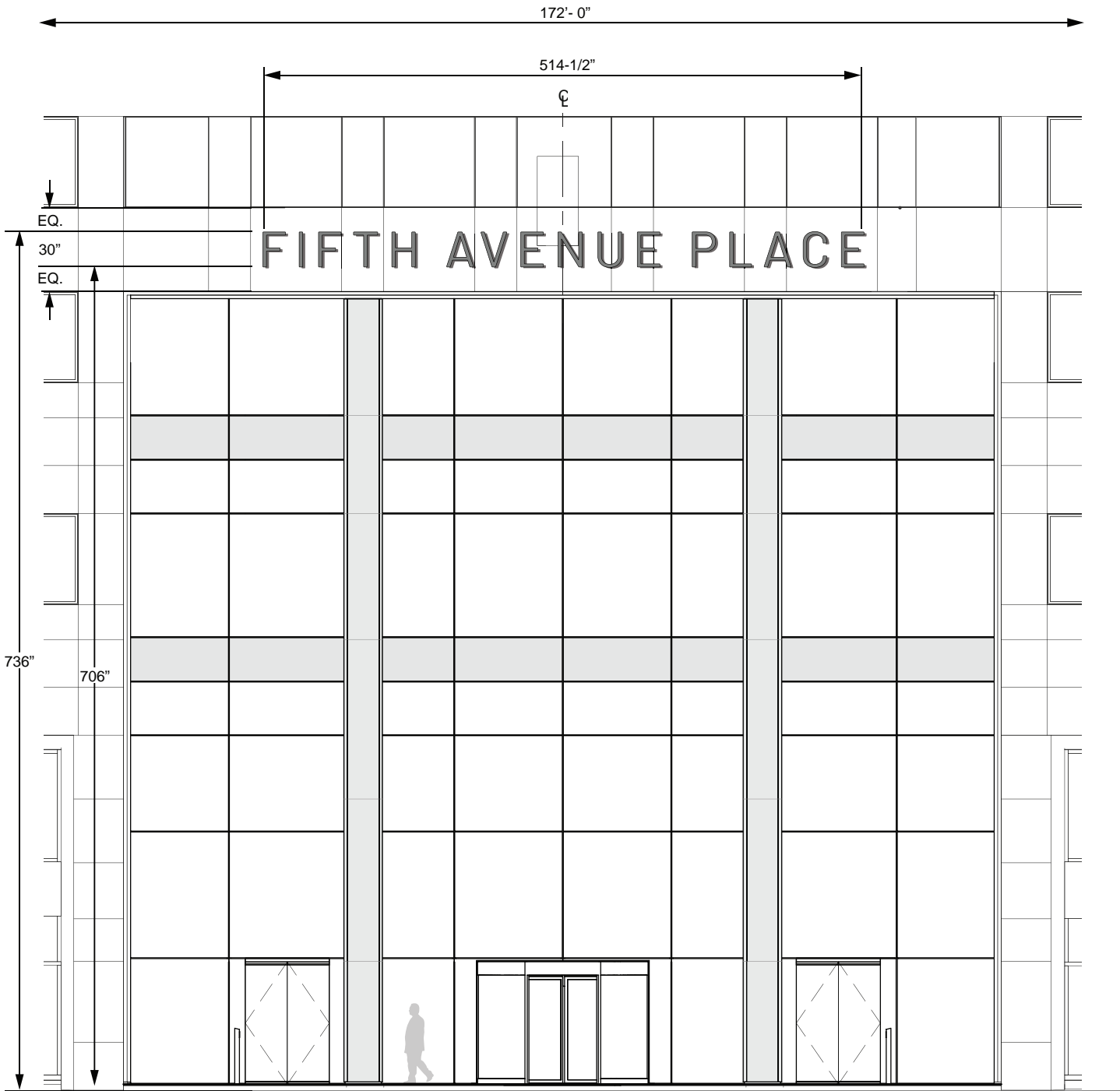
1 **SIGN SITE PLAN**
4 **SCALE : 1" = 24'- 0"**

Signature _____ Date _____
PAGE MUST BE PRINTED ON 11" x 17" PAPER FOR SCALE TO BE ACCURATE

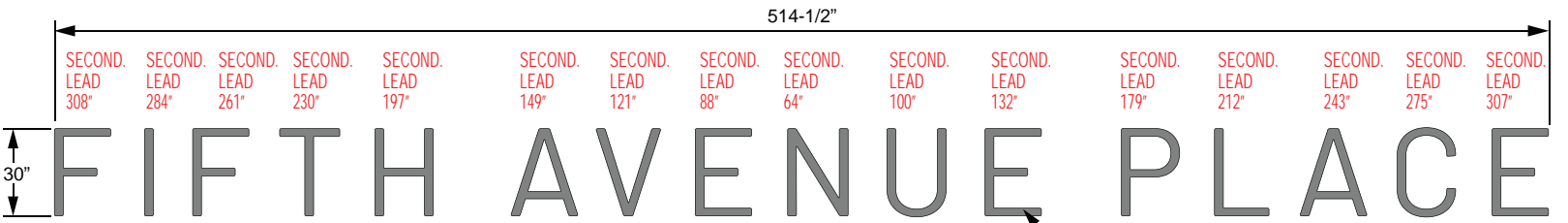
Notice and Disclaimer | Intellectual Property Notice | Copyright Notice
"These plans are the exclusive property of Shamrock Building Services Incorporated and are the result of the original work of its employees. Distribution or exhibition of these plans to anyone other than employees of your company or use of these plans to design or construct a sign similar to the sign embodied herein is not permitted without the express written consent of Shamrock Building Services Incorporated. In the event such permission is given the user agrees to compensate Shamrock Building Services Incorporated a reasonable fee for the time and effort spent creating these plans. These plans contain proprietary and confidential information. Shamrock Building Services Incorporated retains ownership, copyright, and intellectual property rights to the proprietary processes described in these plans. In the event that the proprietary processes contained in these plans are revealed to anyone outside of your company the user agrees to compensate Shamrock Building Services reasonable damages as provided by Local, State, and Federal law."
Copyright 2016 Shamrock Building Services



REV. #	DATE	DESCRIPTION
0	10-07-2021	Original Drawing Completion
1	10-21-2021	Revise per Customer Comments
2	11-01-2021	Add Note to C3 RE: Location of Box



1 PROPOSED STANWIX STREET ELEVATION
5 SCALE : 3/32" = 1'- 0"



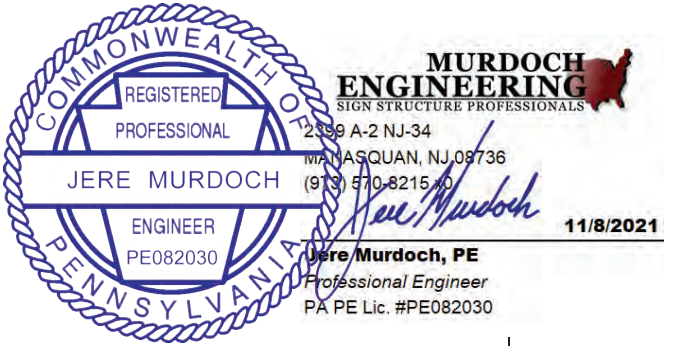
2 PROPOSED SIGN A1 ELEVATION
5 SCALE : 3/16" = 1'- 0"

DESIGN SPECIFICATIONS	
IBC 2015 with Pittsburgh amendments	
ASCE 7-10 Minimum Design Loads for Buildings & Other Structures	
ACI 318-14 Building Code Requirements for Structural Concrete	
ANSI/AISC 360-10 Specification for Structural Steel Buildings	
DESIGN LOADS	
Wind Vult = 115 mph	
Exposure C	
Risk Cat. II	
Grnd. Snow Pg = 30 psf	

Engineer's Note:
Threaded studs to be embd. min. 2.5" into buidling exterior
w/ embedded lengths coated in GE SCS2000 adhesive or
equiv. Provide four (4) studs per letter

3 TYPICAL END VIEW
5 SCALE : 3/4" = 1'- 0"

ITEM	DESCRIPTION	SPECIFICATION
C1	Fabricated Aluminum, Halo Lit Reverse Channel Letters	3" Deep, Fabricated Letters with 0.125" Aluminum Faces and 0.090" Returns Surface Painted to Match RAL 9023 Pearl Grey Old Castle : Pewter 399B02 DESIGNER TO PROVIDE TWO COLOR CHIPS for Paint Matching. Letters have Clear Polycarbonate Backs with Diffuser Film Applied to Backs. Illuminated with White LED Modules
C2	Letter Mounting Method	Fully Threaded 3/8" SST Studs with Silicone Adhesive and 1" Long Spacers Painted to Match Building Facade
C3	Remote Metal Box	Box Contains LED Power Supplies and Has a 20 AMP Toggle Type Disconnect Switch on Exterior. Box Requires 18" x 24" Accessible Opening - Access can be Provided from the Interior in the Ceiling Adjacent to Sign Location



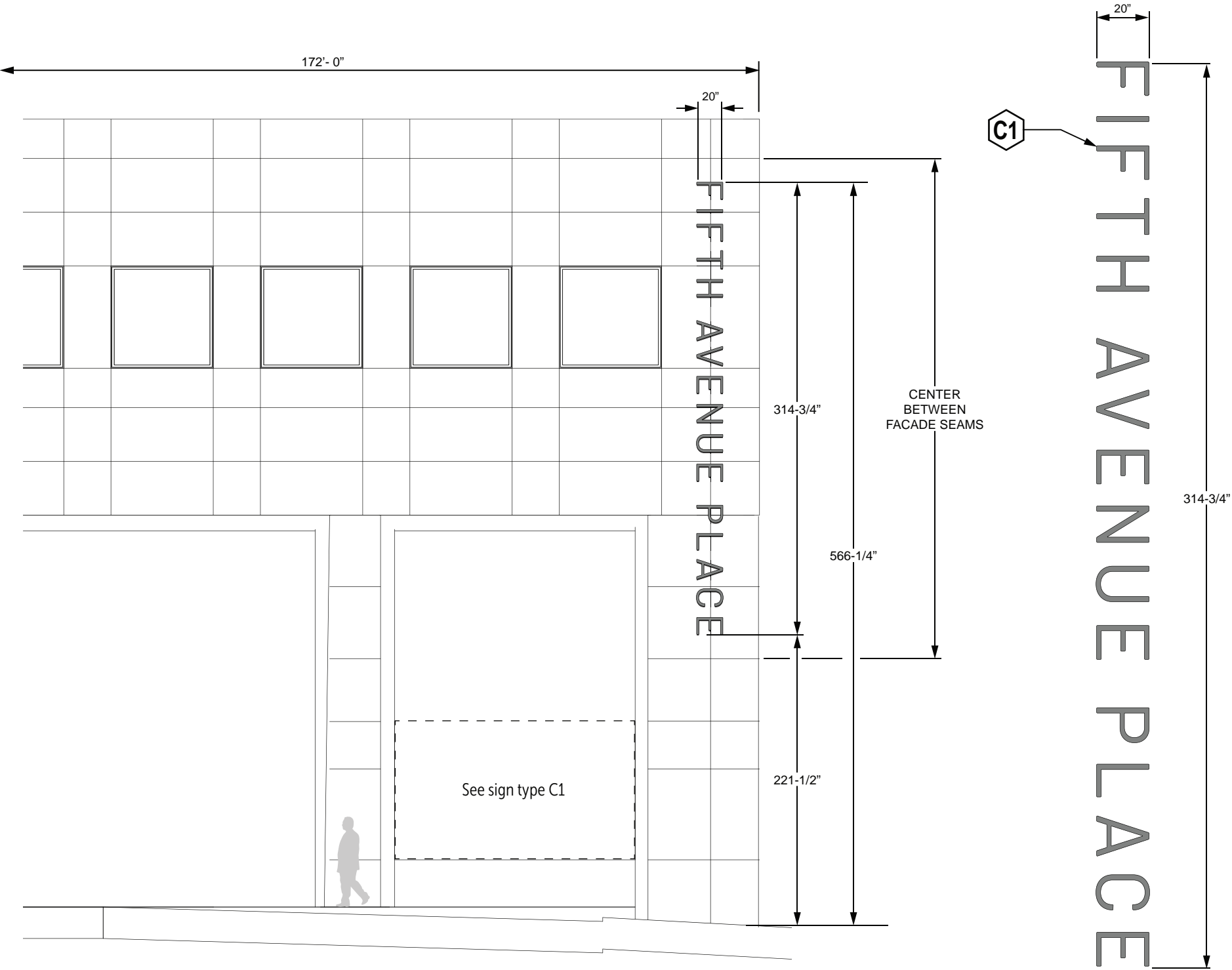
Signature Date

PAGE MUST BE PRINTED ON 11" x 17" PAPER FOR SCALE TO BE ACCURATE

Notice and Disclaimer | Intellectual Property Notice | Copyright Notice

"These plans are the exclusive property of Shamrock Building Services Incorporated and are the result of the original work of its employees. Distribution or exhibition of these plans to anyone other than employees of your company or use of these plans to design or construct a sign similar to the sign embodied herein is not permitted without the express written consent of Shamrock Building Services Incorporated. In the event such permission is given the user agrees to compensate Shamrock Building Services Incorporated a reasonable fee for the time and effort spent creating these plans. These plans contain proprietary and confidential information. Shamrock Building Services Incorporated retains ownership, copyright, and intellectual property rights to the proprietary processes described in these plans. In the event that the proprietary processes contained in these plans are revealed to anyone outside of your company the user agrees to compensate Shamrock Building Services reasonable damages as provided by Local, State, and Federal law." Copyright 2016 Shamrock Building Services





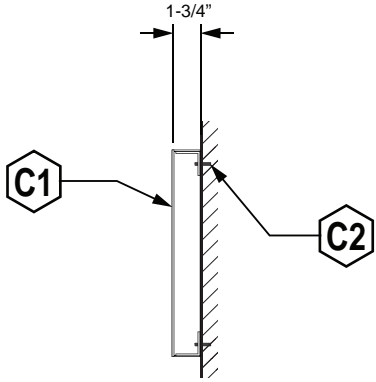
1 PROPOSED 5th AVENUE (CORNER OF PENN AVE.) ELEVATION
6 SCALE : 1/8" = 1'- 0"

QTY. REQ. : (1)

2 PROPOSED SIGN A2 ELEVATION
6 SCALE : 1/4" = 1'- 0"

REV. #	DATE	DESCRIPTION
0	10-07-2021	Original Drawing Completion
1	10-21-2021	Revise per Customer Comments

DESIGN SPECIFICATIONS	
IBC 2015	with Pittsburgh amendments
ASCE 7-10	Minimum Design Loads for Buildings & Other Structures
ACI 318-14	Building Code Requirements for Structural Concrete
ANSI/AISC 360-10	Specification for Structural Steel Buildings
DESIGN LOADS	
Wind	Vult = 115 mph
Exposure	C
Risk Cat.	II
Grnd. Snow	Pg = 30 psf



3 TYPICAL LETTER SECTION
6 SCALE : 1" = 1'- 0"



Jere Murdoch, PE
Professional Engineer
PA PE Lic. #PE082030

ITEM	DESCRIPTION	SPECIFICATION
C1	Fabricated Aluminum, Non-Illuminated Reverse Channel Letters	1-3/4" Deep, Fabricated Letters with 0.125" Aluminum Faces and 0.090" Returns Surface Painted to Match RAL 9023 Pearl Grey Old Castle : Pewter 399B02 DESIGNER TO PROVIDE TWO COLOR CHIPS for Paint Matching
C2	Letter Mounting Method	3/8" Fully Threaded SST Studs with Silicone Adhesive

Engineer's Note:
Threaded studs to be embd. min. 2.5" into buidling exterior
w/ embedded lengths coated in GE SCS2000 adhesive or
equiv. Provide four (4) studs per letter

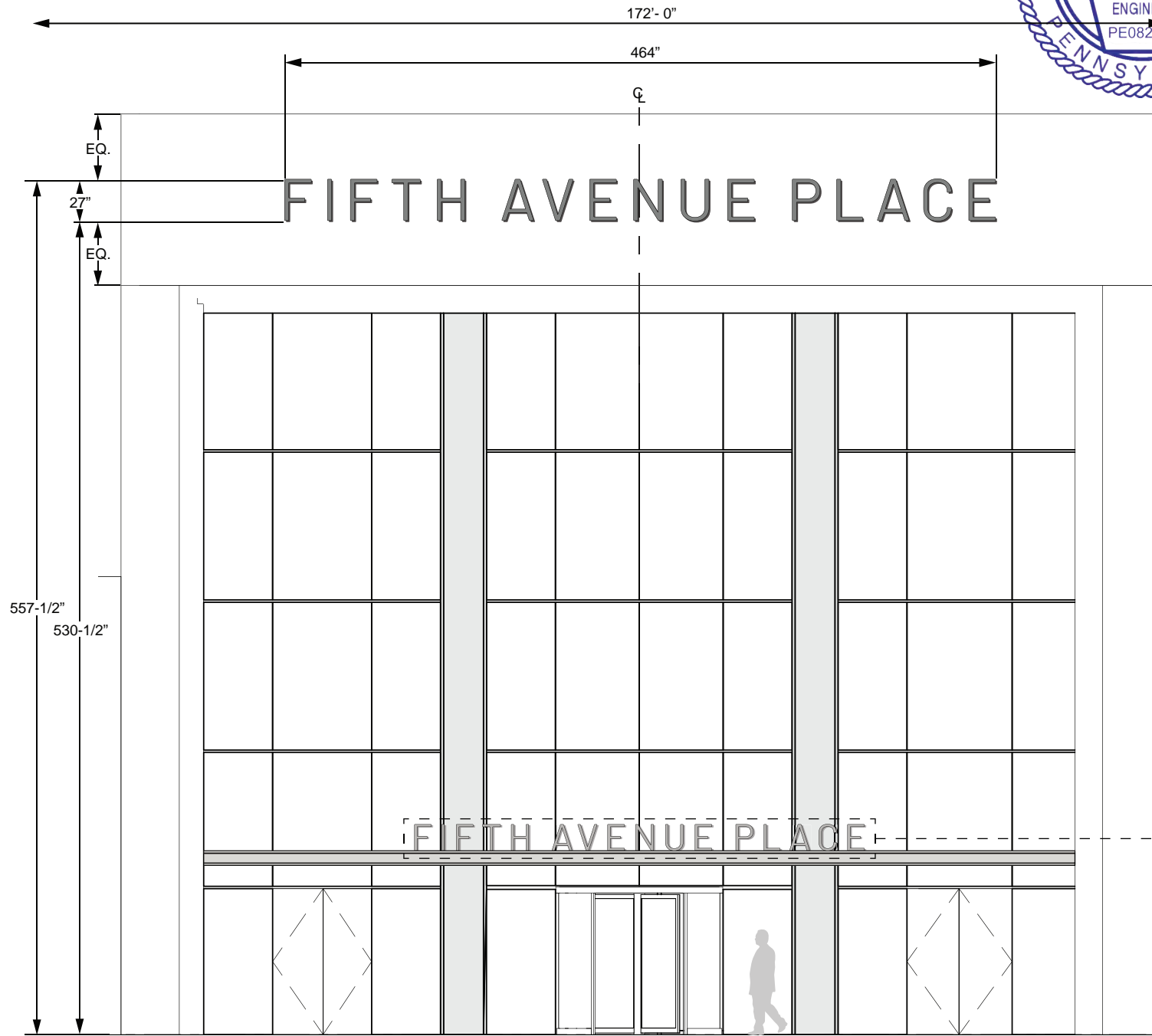
Signature _____ Date _____
PAGE MUST BE PRINTED ON 11" x 17" PAPER FOR SCALE TO BE ACCURATE

Notice and Disclaimer | Intellectual Property Notice | Copyright Notice

"These plans are the exclusive property of Shamrock Building Services Incorporated and are the result of the original work of its employees. Distribution or exhibition of these plans to anyone other than employees of your company or use of these plans to design or construct a sign similar to the sign embodied herein is not permitted without the express written consent of Shamrock Building Services Incorporated. In the event such permission is given the user agrees to compensate Shamrock Building Services Incorporated a reasonable fee for the time and effort spent creating these plans. These plans contain proprietary and confidential information. Shamrock Building Services Incorporated retains ownership, copyright, and intellectual property rights to the proprietary processes described in these plans. In the event that the proprietary processes contained in these plans are revealed to anyone outside of your company the user agrees to compensate Shamrock Building Services reasonable damages as provided by Local, State, and Federal law." Copyright 2016 Shamrock Building Services

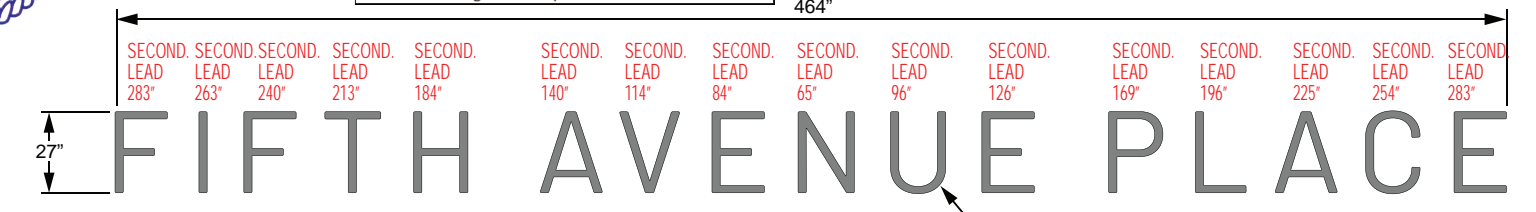


REV. #	DATE	DESCRIPTION
0	10-07-2021	Original Drawing Completion
1	10-21-2021	Revise per Customer Comments
2	11-01-2021	Add Note to C3 RE: Location of Box

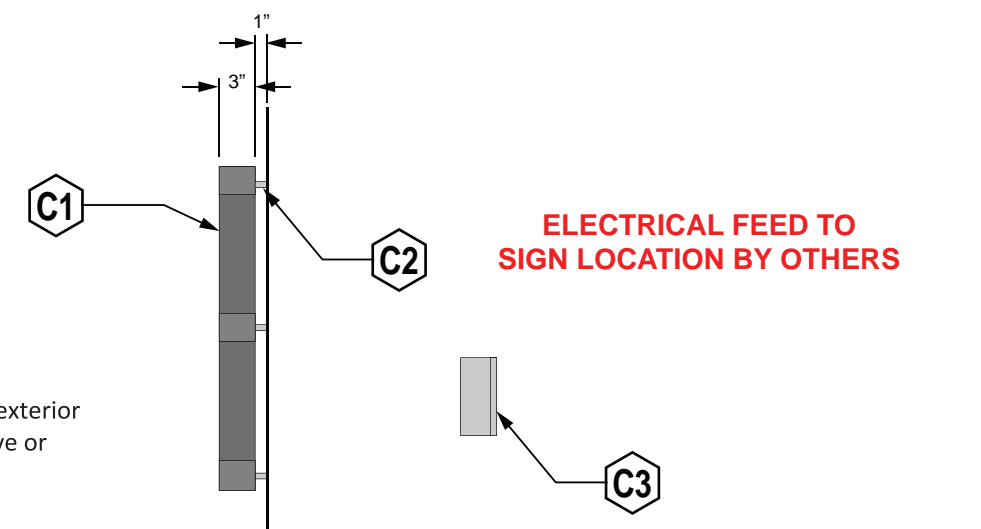


1 PROPOSED LIBERTY AVENUE ELEVATION

7 SCALE : 1/8" = 1'-0"



2 PROPOSED SIGN A3 ELEVATION
5 SCALE : 3/16" = 1' - 0"



Engineer's Note:
Threaded studs to be embd. min. 2.5" into building exterior
w/ embedded lengths coated in GE SCS2000 adhesive or
equiv. Provide four (4) studs per letter

3 TYPICAL END VIEW
5 SCALE : 3/4" = 1' - 0"

ITEM	DESCRIPTION	SPECIFICATION
C1	Fabricated Aluminum, Halo Lit Reverse Channel Letters	3" Deep, Fabricated Letters with 0.125" Aluminum Faces and 0.090" Returns Surface Painted to Match RAL 9023 Pearl Grey Old Castle : Pewter 399B02 DESIGNER TO PROVIDE TWO COLOR CHIPS for Paint Matching. Letters have Clear Polycarbonate Backs with Diffuser Film Applied to Backs. Illuminated with White LED Modules
C2	Letter Mounting Method	3/8" Fully Threaded SST Studs with Silicone Adhesive and 1" Long Spacers Painted to Match Building Facade
C3	Remote Metal Box	Box Contains LED Power Supplies and Has a 20 AMP Toggle Type Disconnect Switch on Exterior. Box Requires 18" x 24" Accessible Opening - Access can be Provided from the Interior in the Ceiling Adjacent to Sign Location

**SIGN TYPE A4
(SEE PAGE 8)**

Signature _____ Date _____

PAGE MUST BE PRINTED ON 11" x 17" PAPER FOR SCALE TO BE ACCURATE

[Notice and Disclaimer](#) | [Intellectual Property Notice](#) | [Copyright Notice](#)

"These plans are the exclusive property of Shamrock Building Services Incorporated and are the result of the original work of its employees. Distribution or exhibition of these plans to anyone other than employees of your company or use of these plans to design or construct a sign similar to the sign embodied herein is not permitted without the express written consent of Shamrock Building Services Incorporated. In the event such permission is given the user agrees to compensate Shamrock Building Services Incorporated a reasonable fee for the time and effort spent creating these plans. These plans contain proprietary and confidential information. Shamrock Building Services Incorporated retains ownership, copyright, and intellectual property rights to the proprietary processes described in these plans. In the event that the proprietary processes contained in these plans are revealed to anyone outside of your company the user agrees to compensate Shamrock Building Services reasonable damages as provided by Local, State, and Federal law."

Copyright 2016 Shamrock Building Services



COMMONWEALTH OF PENNSYLVANIA

REGISTERED PROFESSIONAL ENGINEER

JERE MURDOCH

PE082030

MURDOCH ENGINEERING

SIGN STRUCTURE PROFESSIONALS

2398 A-2 NJ-34

HANASQUAN, NJ 08736

(973) 370-8215

Jere Murdoch, PE

Professional Engineer

PA PE Lic. #PE082030

11/8/2021

DESIGN SPECIFICATIONS	
IBC	2015 with Pittsburgh amendments
ASCE	7-10 Minimum Design Loads for Buildings & Other Structures
ACI	318-14 Building Code Requirements for Structural Concrete
ANSI/AISC	360-10 Specification for Structural Steel Buildings

DESIGN LOADS	
Wind	Vult = 115 mph
Exposure	C
Risk Cat.	II
Grnd. Snow	Pg = 30 psf

REV. #	DATE	DESCRIPTION
0	10-07-2021	Original Drawing Completion
1	10-21-2021	Revise per Customer Comments

172'- 0"

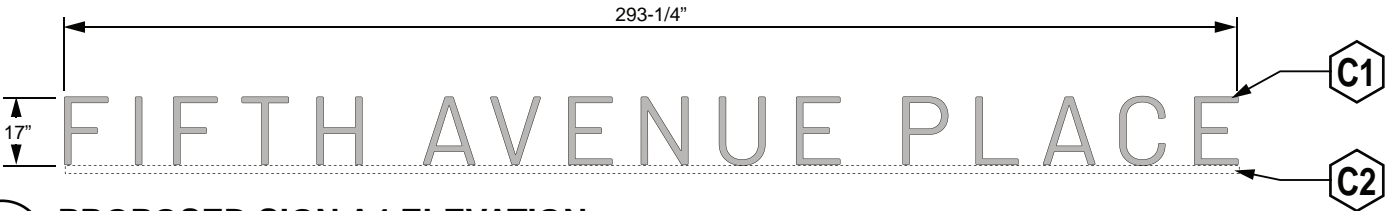


1

8

PROPOSED LIBERTY AVENUE CANOPY ELEVATION

SCALE : 1/8" = 1'- 0"



2

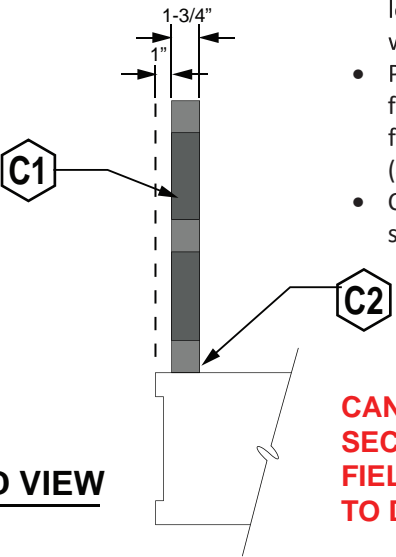
8

PROPOSED SIGN A4 ELEVATION

SCALE : 1/4" = 1'- 0"

QTY. REQ. : (1)

- Engineer's Note:
- Provide 2"x2" angle clips bolted to the back of each letter, min. one (1) per letter & two (2) where possible, with 3/8" SS Bolt
 - Provide 1/4" SS Tek Screws through bottom of letter framing and bottom of angle clip into existing canopy framing, providing min. two (2) total per letter & four (4) where possible
 - Contact Murdoch Engineering for alternate fastening solutions if field conditions vary



3

5

TYPICAL END VIEW

SCALE : 1" = 1'- 0"

CANOPY BY OTHERS - SECTION DRAWING OR FIELD SURVEY REQUIRED TO DETERMINE MOUNTING

ITEM	DESCRIPTION	SPECIFICATION
C1	Fabricated Aluminum, Non-Illuminated Reverse Channel Letters	1-3/4" Deep, Fabricated Letters with 0.125" Aluminum Faces and Backs with 0.090" Returns Surface Painted to Match RAL 9023 Pearl Grey Old Castle : Pewter 399B02 DESIGNER TO PROVIDE TWO COLOR CHIPS for Paint Matching
C2	Letter Mounting Method	SEE ENGINEER'S NOTE

Signature

Date

PAGE MUST BE PRINTED ON 11" x 17" PAPER FOR SCALE TO BE ACCURATE

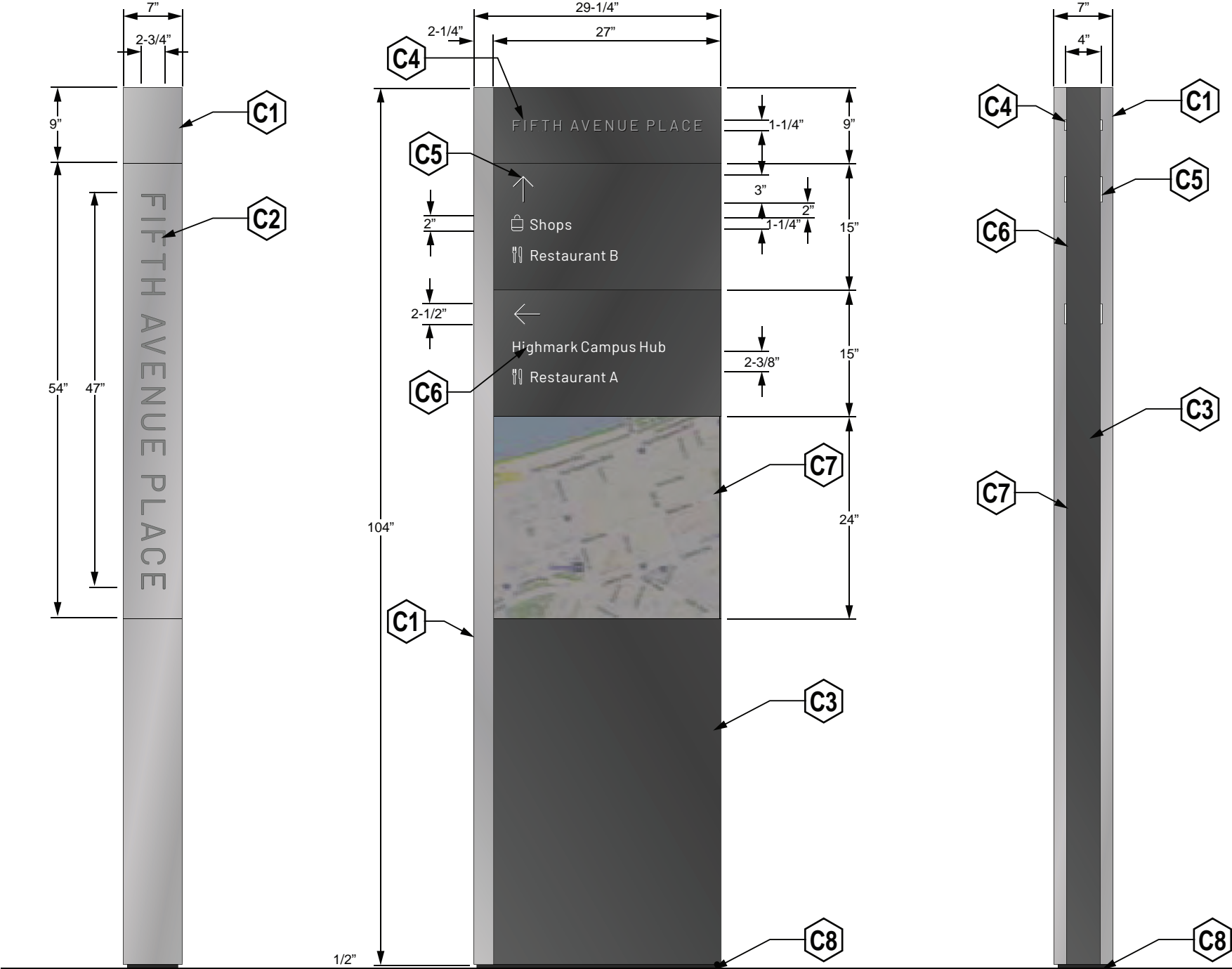
Notice and Disclaimer | Intellectual Property Notice | Copyright Notice

"These plans are the exclusive property of Shamrock Building Services Incorporated and are the result of the original work of its employees. Distribution or exhibition of these plans to anyone other than employees of your company or use of these plans to design or construct a sign similar to the sign embodied herein is not permitted without the express written consent of Shamrock Building Services Incorporated. In the event such permission is given the user agrees to compensate Shamrock Building Services Incorporated a reasonable fee for the time and effort spent creating these plans. These plans contain proprietary and confidential information. Shamrock Building Services Incorporated retains ownership, copyright, and intellectual property rights to the proprietary processes described in these plans. In the event that the proprietary processes contained in these plans are revealed to anyone outside of your company the user agrees to compensate Shamrock Building Services reasonable damages as provided by Local, State, and Federal law."

Copyright 2016 Shamrock Building Services



REV. #	DATE	DESCRIPTION
0	09-21-2021	Original Drawing Completion
1	10-21-2021	Revise per Customer Comments



DESIGNER TO PROVIDE FINAL
MESSAGES AND MAPS FOR
BOTH SIDES OF BOTH PYLONS

ITEM	DESCRIPTION	SPECIFICATION
C1	Fabricated Aluminum End Rib	2" x 2" x 1/8" Square Aluminum Tube Frame with 0.125" Aluminum Skin Surface Painted to Match Designer Color M1 Brushed Metal, Metallic Finish DESIGNER TO PROVIDE TWO COLOR CHIPS for Paint Matching
C2	Etched and Infilled Lettering	Infill to Match RAL 9023 Pearl Grey Old Castle : Pewter 399B02 DESIGNER TO PROVIDE TWO COLOR CHIPS for Paint Matching
C3	Fabricated Aluminum Main Sign Body with Removable Message Panels	SignComp #1390 Body, #1693 Access Body, #1679 Insert Panel Adapter, #1668 Insert Divider, #1698 Insert End Cover and 0.125" Aluminum Sheet, Surface Painted to Match Designer Color M2 RAL 9023 Pearl Grey Old Castle : Pewter 399B02 DESIGNER TO PROVIDE TWO COLOR CHIPS for Paint Matching
C4	Surface Mounted Lettering Reading "Fifth Avenue Place"	CNC Cut, 1/4" Acrylic Surface Mounted and Surface Painted Designer Color M1 Brushed Metal, Metallic Finish DESIGNER TO PROVIDE TWO COLOR CHIPS for Paint Matching
C5	Surface Mounted Directional Arrow	CNC Cut, 1/4" Aluminum Surface Mounted and Surface Painted C1 Matte White
C6	Surface Applied Symbols and Copy	Computer Cut 3M 7725-20 Matte White Vinyl
C7	Updatable IZone or Equivalent Map	High Pressure Laminate Image - Final Graphics to be Provided by Guide
C8	Bottom Reveal / Base Plate	1/2" Aluminum Plate, Surface Painted to Match Designer Color M2 DESIGNER TO PROVIDE TWO COLOR CHIPS for Paint Matching



MURDOCH ENGINEERING
SIGN STRUCTURE PROFESSIONALS
2399 A-2 NJ-34
MANASQUAN, NJ 08736
(973) 570-8215
Jere Murdoch
11/8/2021
Jere Murdoch, PE
Professional Engineer
PA PE Lic. #PE082030

DESIGN SPECIFICATIONS	
IBC 2015	with Pittsburgh amendments
ASCE 7-10	Minimum Design Loads for Buildings & Other Structures
ACI 318-14	Building Code Requirements for Structural Concrete
ANSI/AISC 360-10	Specification for Structural Steel Buildings
DESIGN LOADS	
Wind	Vult = 115 mph
Exposure	C
Risk Cat.	II
Grnd. Snow	Pg = 30 psf

2 LEFT END VIEW
9 SCALE : 3/4" = 1'- 0"

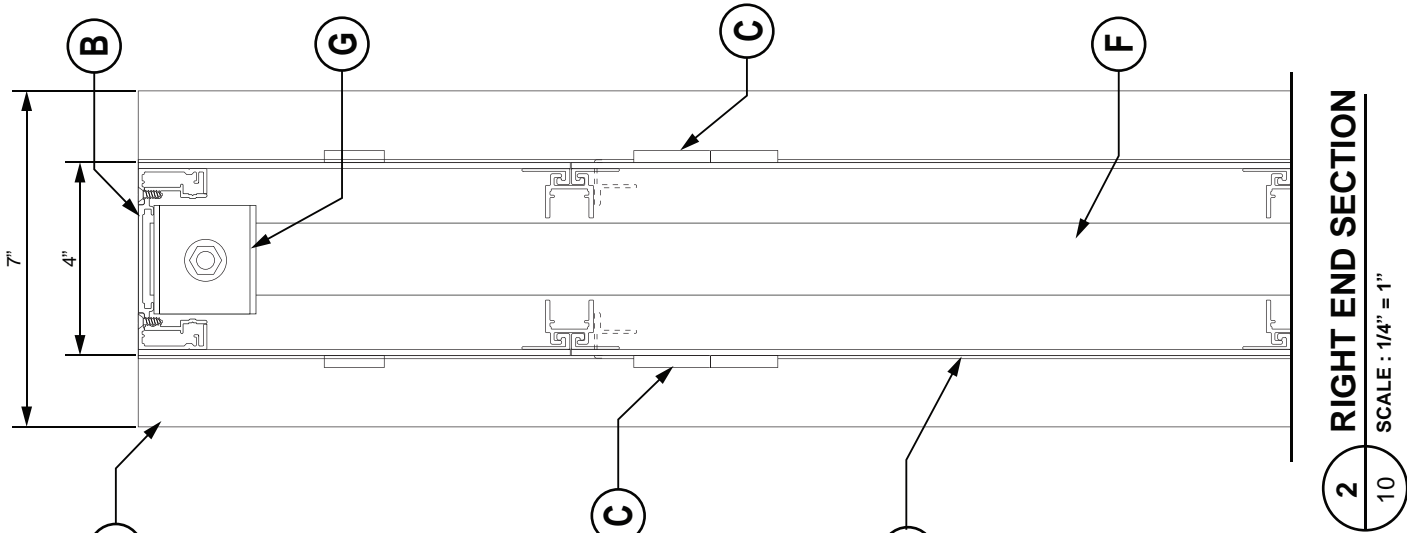
1 SIGN B1 ELEVATION DETAIL
9 SCALE : 3/4" = 1'- 0" QTY. REQ. : (2)

3 RIGHT END VIEW
9 SCALE : 3/4" = 1'- 0"

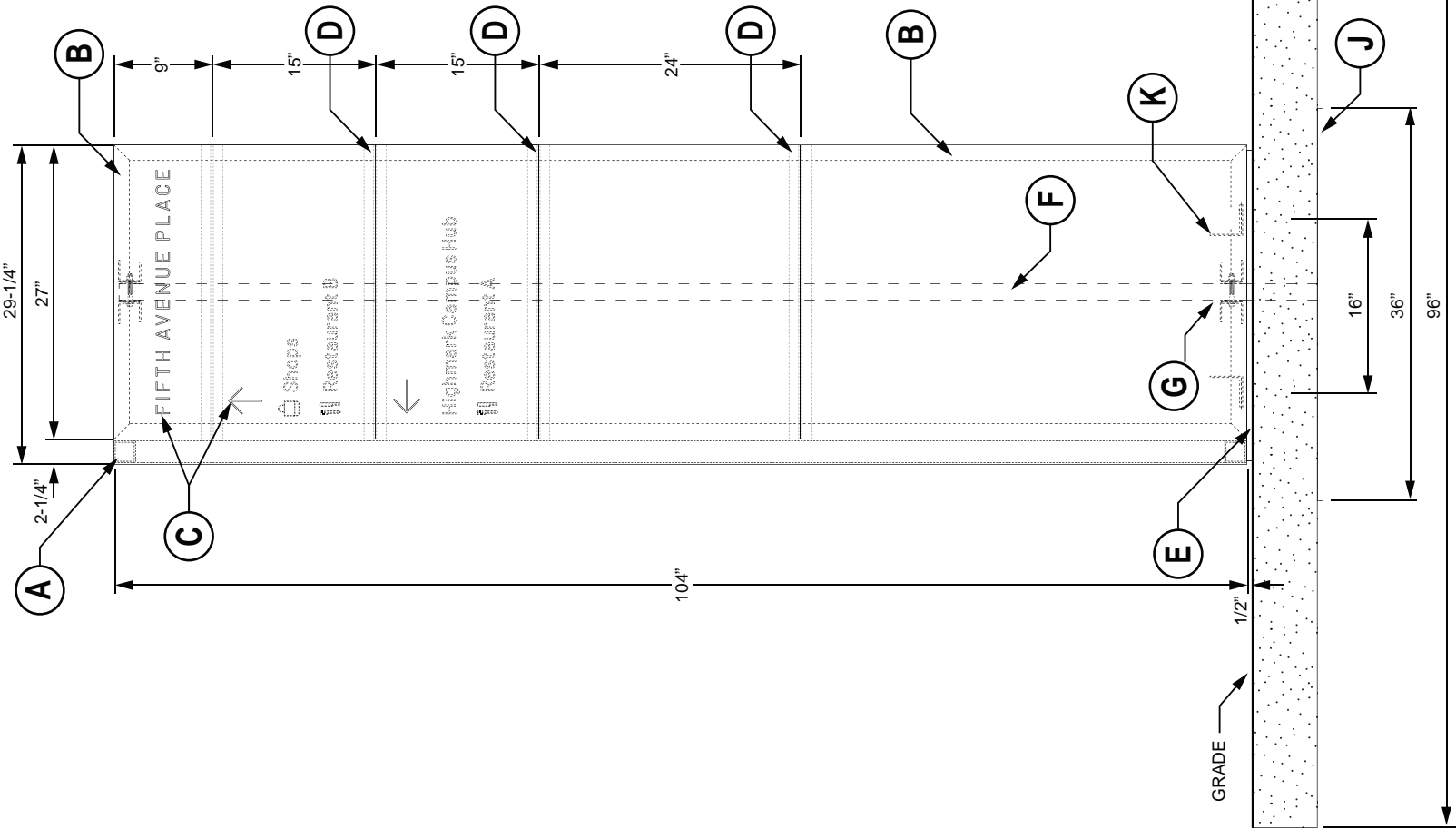
Signature _____ Date _____
PAGE MUST BE PRINTED ON 11" x 17" PAPER FOR SCALE TO BE ACCURATE

Notice and Disclaimer | Intellectual Property Notice | Copyright Notice
"These plans are the exclusive property of Shamrock Building Services Incorporated and are the result of the original work of its employees. Distribution or exhibition of these plans to anyone other than employees of your company or use of these plans to design or construct a sign similar to the sign embodied herein is not permitted without the express written consent of Shamrock Building Services Incorporated. In the event such permission is given the user agrees to compensate Shamrock Building Services Incorporated a reasonable fee for the time and effort spent creating these plans. These plans contain proprietary and confidential information. Shamrock Building Services Incorporated retains ownership, copyright, and intellectual property rights to the proprietary processes described in these plans. In the event that the proprietary processes contained in these plans are revealed to anyone outside of your company the user agrees to compensate Shamrock Building Services reasonable damages as provided by Local, State, and Federal law."
Copyright 2016 Shamrock Building Services

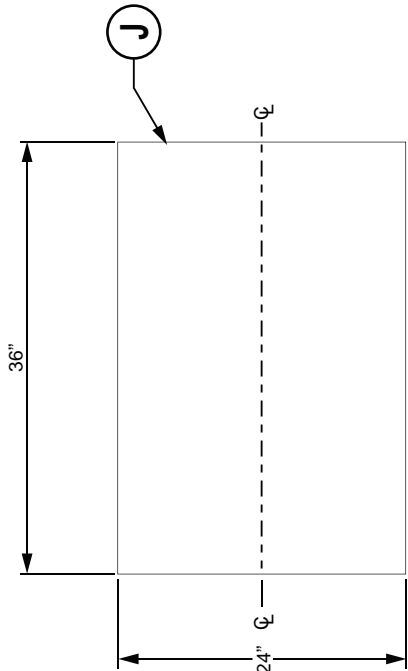




2 RIGHT END SECTION
SCALE : 1/4" = 1'



1 SIGN B1 CONSTRUCTION ELEVATION
SCALE : 3/4" = 1'-0"

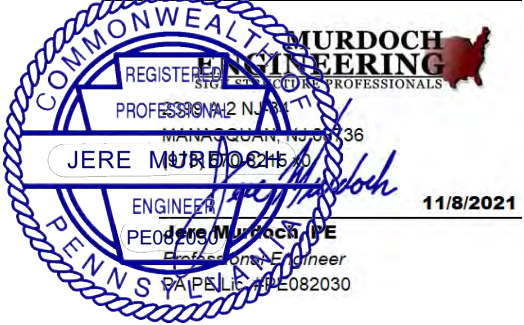


3 FOUNDATION PLATE PLAN VIEW
SCALE : 3/4" = 1'-0"

ITEM	DESCRIPTION	SPECIFICATION
A	Fabricated Aluminum End Rib	2" x 2" x 1/8" Square Aluminum Tube Frame with 0.125" Aluminum Skin
B	Fabricated Aluminum Main Sign Body	SignComp #1390 Body with Mitered, Welded Corners with #1693 Access Body (Top and Bottom) and 0.125" Aluminum Faces
C	Surface Mounted Directional Arrows and Lettering Reading Fifth Avenue Place	CNC Cut, 1/4" Acrylic - Surface Mounted
D	Removable Message Panels	SignComp #1679 Insert Panel Adapter, #1668 Insert Divider, #1698 Insert End Cover and 0.125" Aluminum Sheet
E	Bottom Reveal / Base Plate	1/2" Aluminum Plate Mechanically Attached to Main Sign Body
F	Internal Steel Tube Support	TS 2" x 2" x 1/4" Square Steel Tube ASTM A500 Grade B
G	Internal Steel Tube Support Saddle Mount System	2" x 2" x 1/8" Aluminum Angle Mechanically Fastened to 2" x 2" x 1/8" Steel Angle and Square Steel Tube with SST Hardware
H	Foundation	Foundation Suited to Field Conditions to Measure 96" Square x 6" Deep
J	Foundation Plate	24" x 36" x 1/2" ASTM A36 Steel Plate welded to bottom of Tube Support
K	Interior Anchoring Angles	Welded 3" x 3" x 1/4" Aluminum Angles

REV. #	DATE	DESCRIPTION
0	09-21-2021	Original Drawing Completion
1	10-21-2021	Revise per Customer Comments
2	11-01-2021	Provide Foundation Details

DESIGN SPECIFICATIONS	
IBC 2015 with Pittsburgh amendments	
ASCE 7-10 Minimum Design Loads for Buildings & Other Structures	
ACI 318-14 Building Code Requirements for Structural Concrete	
ANSI/AISC 360-10 Specification for Structural Steel Buildings	
DESIGN LOADS	
Wind Vult =	115 mph
Exposure	C
Risk Cat.	II
Ground Snow Pg =	30 psf



Signature

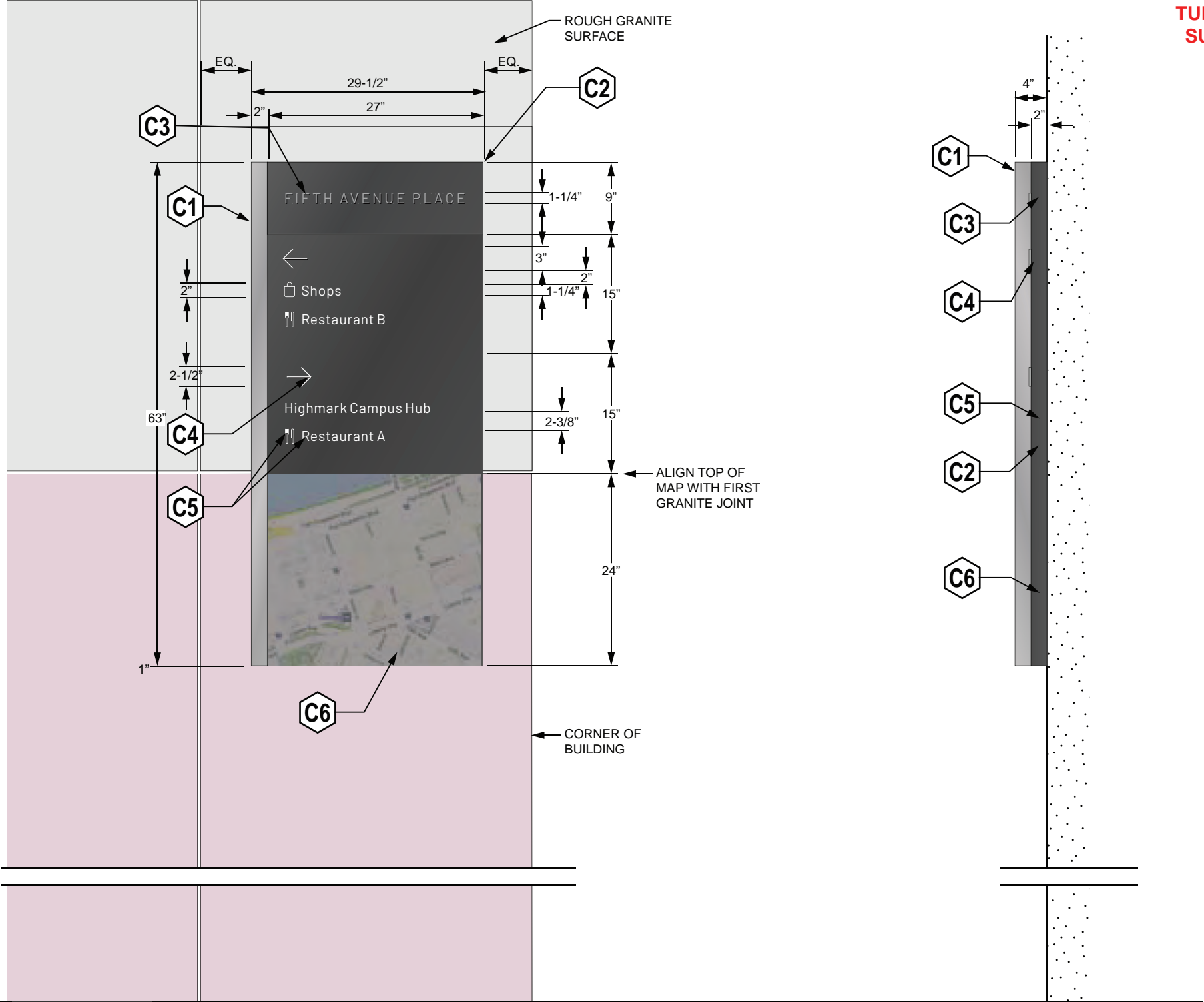
Date

PAGE MUST BE PRINTED ON 11" x 17" PAPER FOR SCALE TO BE ACCURATE

Notice and Disclaimer | Intellectual Property Notice | Copyright Notice

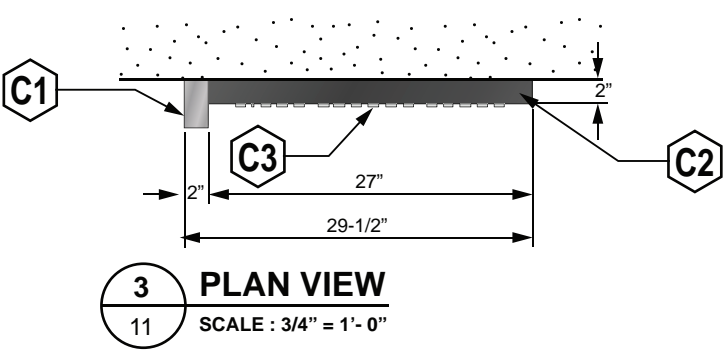
"These plans are the exclusive property of Shamrock Building Services Incorporated and are the result of the original work of its employees. Distribution or exhibition of these plans to anyone other than employees of your company or use of these plans to design or construct a sign similar to the sign embodied herein is not permitted without the express written consent of Shamrock Building Services Incorporated. In the event such permission is given the user agrees to compensate Shamrock Building Services Incorporated a reasonable fee for the time and effort spent creating these plans. These plans contain proprietary and confidential information. Shamrock Building Services Incorporated retains ownership, copyright, and intellectual property rights to the proprietary processes described in these plans. In the event that the proprietary processes contained in these plans are revealed to anyone outside of your company the user agrees to compensate Shamrock Building Services reasonable damages as provided by Local, State, and Federal law." Copyright 2016 Shamrock Building Services





PLEASE NOTE:
3-1/2" x 2-1/2" ALUMINUM
TUBE IS UNAVAILABLE -
SUBSTITUTING 4" x 2"

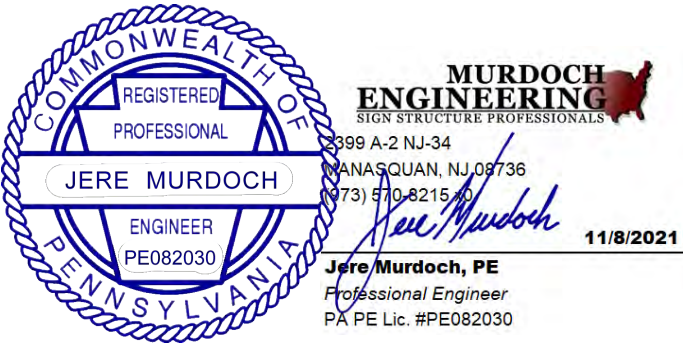
REV. #	DATE	DESCRIPTION
0	09-21-2021	Original Drawing Completion
1	10-21-2021	Revise per Customer Comments



DESIGN SPECIFICATIONS	
IBC 2015	with Pittsburgh amendments
ASCE 7-10	Minimum Design Loads for Buildings & Other Structures
ACI 318-14	Building Code Requirements for Structural Concrete
ANSI/AISC 360-10	Specification for Structural Steel Buildings
DESIGN LOADS	
Wind	Vult = 115 mph
Exposure	C
Risk Cat.	II
Grnd. Snow	Pg = 30 psf

ITEM	DESCRIPTION	SPECIFICATION
C1	Rectangular Aluminum Tube End Rib	4" x 2" x 1/8" Rectangular Aluminum Tube with 0.125" Aluminum Top and Bottom Caps Surface Surface Painted to Match Designer Color M1 Brushed Metal, Metallic Finish DESIGNER TO PROVIDE TWO COLOR CHIPS for Matching
C2	Fabricated Aluminum Main Sign Body with Removable Message Panels	SignComp #1390 Frame (Cut Down to Size), #1295 Top/Bottom Cover, #1679 Insert Panel Adapter, #1668 Insert Divider, #1698 Insert End Cover and 0.125" Aluminum Sheet Panels. Surface Painted to Match Designer Color M2 RAL 9023 Pearl Grey Old Castle : Pewter 399B02 DESIGNER TO PROVIDE TWO COLOR CHIPS for Paint Matching
C3	Surface Mounted Lettering Reading "Fifth Avenue Place"	CNC Cut, 1/4" Acrylic Surface Mounted and Surface Surface Painted to Match Designer Color M1 Brushed Metal, Metallic Finish DESIGNER TO PROVIDE TWO COLOR CHIPS for Paint Matching
C4	Surface Mounted Directional Arrow	CNC Cut, 1/4" Aluminum Surface Mounted and Surface Painted C1 Matte White
C5	Surface Applied Symbols and Copy	Computer Cut 3M 7725-20 Matte White Vinyl
C6	Updatable IZone or Equivalent Map	High Pressure Laminate Image

DESIGNER TO PROVIDE
FINAL MESSAGES AND
MAP FOR THIS SIGN



1 SIGN B2 ELEVATION DETAIL
11 SCALE : 3/4" = 1'- 0"

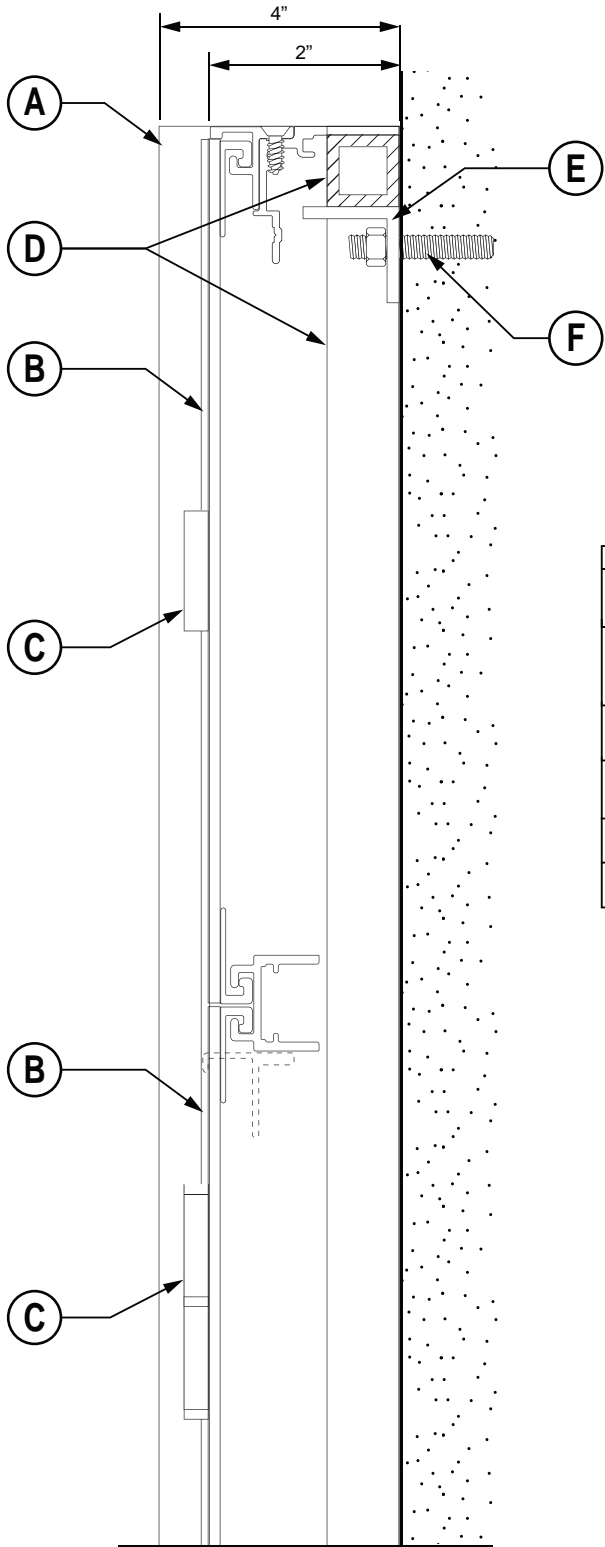
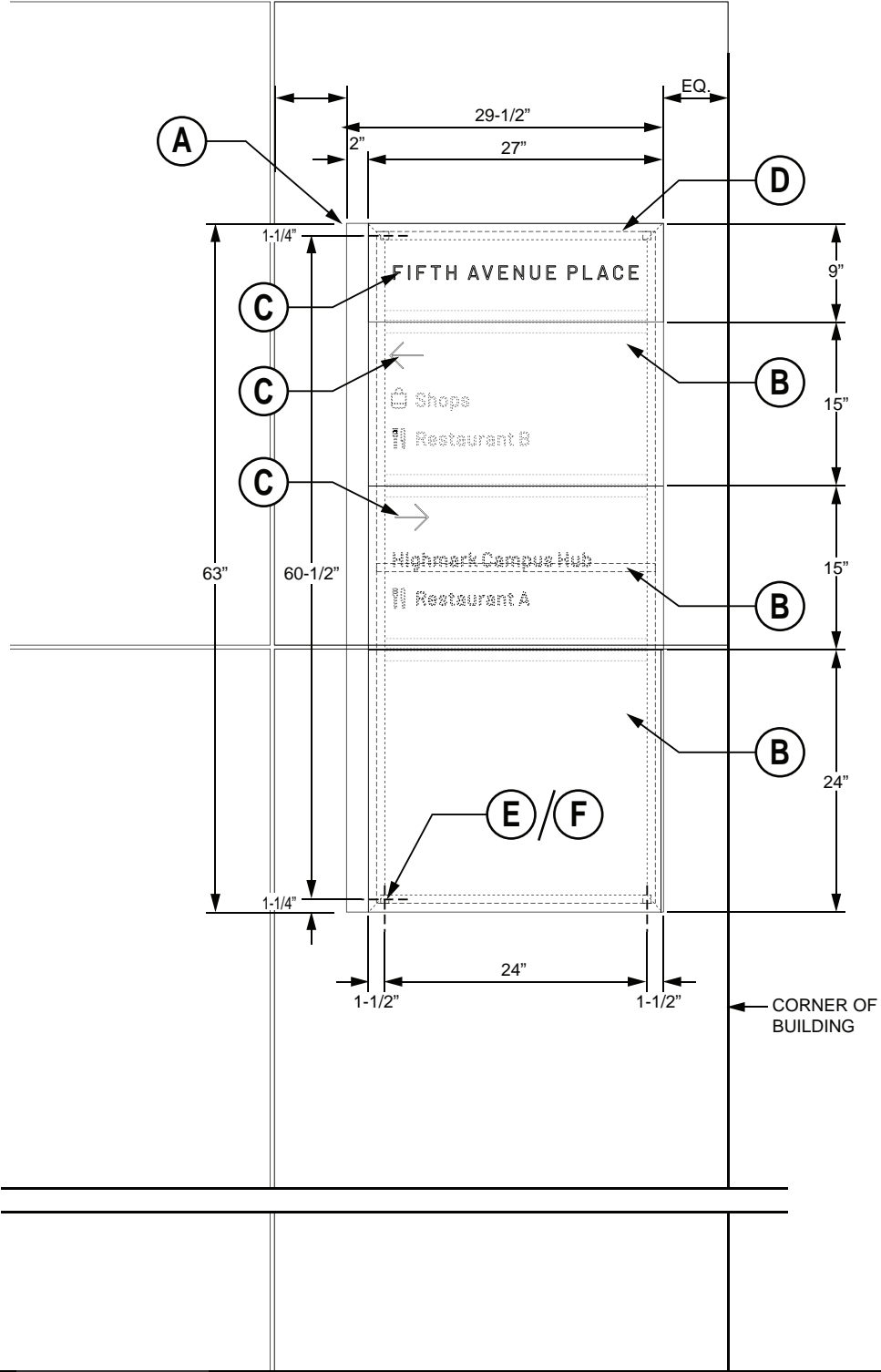
2 RIGHT END VIEW
11 SCALE : 3/4" = 1'- 0"

Notice and Disclaimer | Intellectual Property Notice | Copyright Notice

"These plans are the exclusive property of Shamrock Building Services Incorporated and are the result of the original work of its employees. Distribution or exhibition of these plans to anyone other than employees of your company or use of these plans to design or construct a sign similar to the sign embodied herein is not permitted without the express written consent of Shamrock Building Services Incorporated. In the event such permission is given the user agrees to compensate Shamrock Building Services Incorporated a reasonable fee for the time and effort spent creating these plans. These plans contain proprietary and confidential information. Shamrock Building Services Incorporated retains ownership, copyright, and intellectual property rights to the proprietary processes described in these plans. In the event that the proprietary processes contained in these plans are revealed to anyone outside of your company the user agrees to compensate Shamrock Building Services reasonable damages as provided by Local, State, and Federal law." Copyright 2016 Shamrock Building Services



Signature _____ Date _____
PAGE MUST BE PRINTED ON 11" x 17" PAPER FOR SCALE TO BE ACCURATE

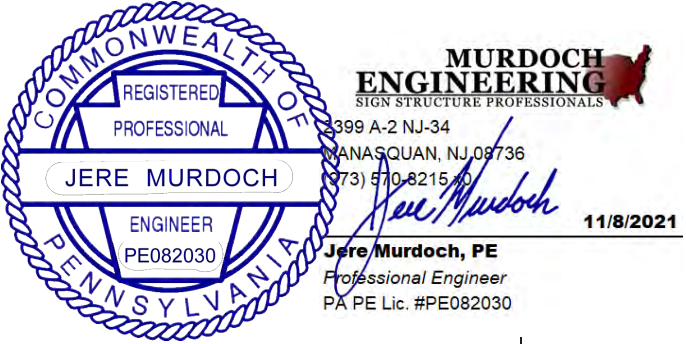


REV. #	DATE	DESCRIPTION
0	09-21-2021	Original Drawing Completion
1	10-21-2021	Revise per Customer Comments

DESIGN SPECIFICATIONS	
IBC 2015	with Pittsburgh amendments
ASCE 7-10	Minimum Design Loads for Buildings & Other Structures
ACI 318-14	Building Code Requirements for Structural Concrete
ANSI/AISC 360-10	Specification for Structural Steel Buildings
DESIGN LOADS	
Wind	Vult = 115 mph
Exposure	C
Risk Cat.	II
Grnd. Snow	Pg = 30 psf

ITEM	DESCRIPTION	SPECIFICATION
A	Rectangular Aluminum Tube End Rib	4" x 2" x 1/8" Rectangular Aluminum Tube with 0.125" Aluminum Top and Bottom Caps. Mechanically Fastened to Main Body
B	Fabricated Aluminum Main Sign Body with Removable Message Panels	SignComp #1390 Frame (Cut Down to Size), #1295 Top/Bottom Cover, #1679 Insert Panel Adapter, #1668 Insert Divider, #1698 Insert End Cover and 0.125" Aluminum Sheet Faces.
C	Surface Mounted Lettering Reading "Fifth Avenue Place" and Directional Arrows	CNC Cut, 1/4" Acrylic Surface Mounted to Aluminum Faces
D	Main Sign Body Internal Frame	3/4" x 3/4" x 1/8" Square Aluminum Tube with Mitered and Welded Corners
E	Mounting Clips	1" x 1" x 1/8" Aluminum Angle Clip - 1" Wide
F	Fully Threaded Stud	3/8" SS Studs secured to Granite Fascia with Silicone Adhesive

Engineer's Note:
Threaded studs to be embd. min. 2.5" into building exterior
w/ embedded lengths coated in GE SCS2000 adhesive or
equiv. Provide four (4) studs per letter



1 SIGN B2 CONSTRUCTION ELEVATION
12 SCALE : 3/4" = 1'- 0"

2 RIGHT END SECTION
12 SCALE : 1/2" = 1"

Notice and Disclaimer | Intellectual Property Notice | Copyright Notice

"These plans are the exclusive property of Shamrock Building Services Incorporated and are the result of the original work of its employees. Distribution or exhibition of these plans to anyone other than employees of your company or use of these plans to design or construct a sign similar to the sign embodied herein is not permitted without the express written consent of Shamrock Building Services Incorporated. In the event such permission is given the user agrees to compensate Shamrock Building Services Incorporated a reasonable fee for the time and effort spent creating these plans. These plans contain proprietary and confidential information. Shamrock Building Services Incorporated retains ownership, copyright, and intellectual property rights to the proprietary processes described in these plans. In the event that the proprietary processes contained in these plans are revealed to anyone outside of your company the user agrees to compensate Shamrock Building Services reasonable damages as provided by Local, State, and Federal law." Copyright 2016 Shamrock Building Services

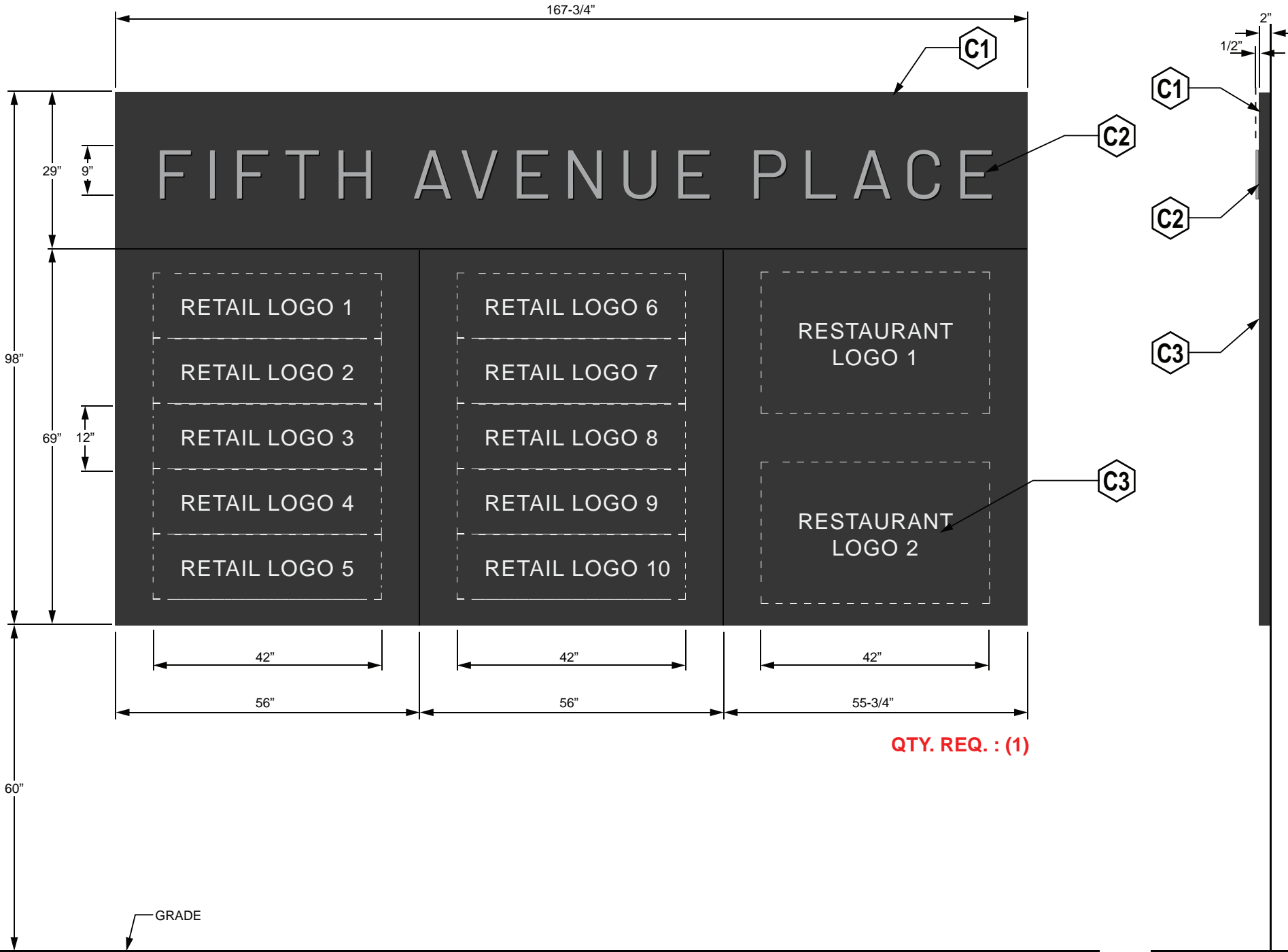


Signature _____ Date _____
PAGE MUST BE PRINTED ON 11" x 17" PAPER FOR SCALE TO BE ACCURATE

REV. #	DATE	DESCRIPTION
0	09-21-2021	Original Drawing Completion
1	10-21-2021	Revise per Customer Comments

DESIGN SPECIFICATIONS	
IBC 2015	with Pittsburgh amendments
ASCE 7-10	Minimum Design Loads for Buildings & Other Structures
ACI 318-14	Building Code Requirements for Structural Concrete
ANSI/AISC 360-10	Specification for Structural Steel Buildings
DESIGN LOADS	
Wind	Vult = 115 mph
Exposure	C
Risk Cat.	II
Grnd. Snow	Pg = 30 psf

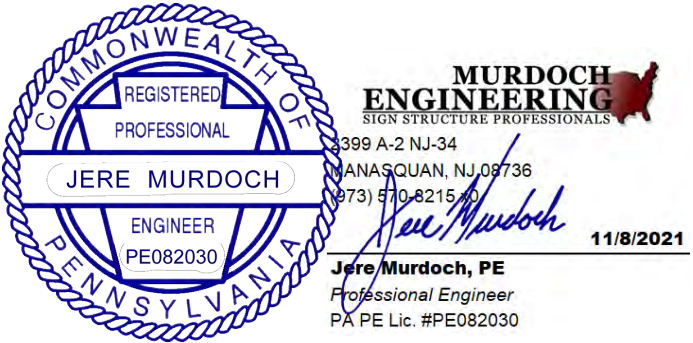
ITEM	DESCRIPTION	SPECIFICATION
C1	Fabricated, Non-Illuminated Sign Body	2" x 2" x 1/8" Architectural Aluminum Angle Frame with 0.125" Aluminum Face. Surface Painted Face and Returns to be Surface Painted to Match Designer Color M2 RAL 9023 Pearl Grey Old Castle : Pewter 399B02 DESIGNER TO PROVIDE TWO COLOR CHIPS for Paint Matching
C2	Surface Mounted Lettering Reading "Fifth Avenue Place"	CNC Cut, 1/2" Acrylic Surface Mounted and Surface Painted to Match Designer Color M1 Brushed Metal, Metallic Finish DESIGNER TO PROVIDE TWO COLOR CHIPS for Paint Matching
C3	Digitally Printed Tenant Logos	Surface Applied Digitally Printed Graphics with Protective Over-laminate



QTY. REQ. : (1)

1 SIGN C1.002 (FIFTH AVE.) ELEVATION DETAIL
13 SCALE : 1/2" = 1'- 0"

2 END VIEW
13 SCALE : 1/2" = 1'- 0"



Signature _____ Date _____
PAGE MUST BE PRINTED ON 11" x 17" PAPER FOR SCALE TO BE ACCURATE

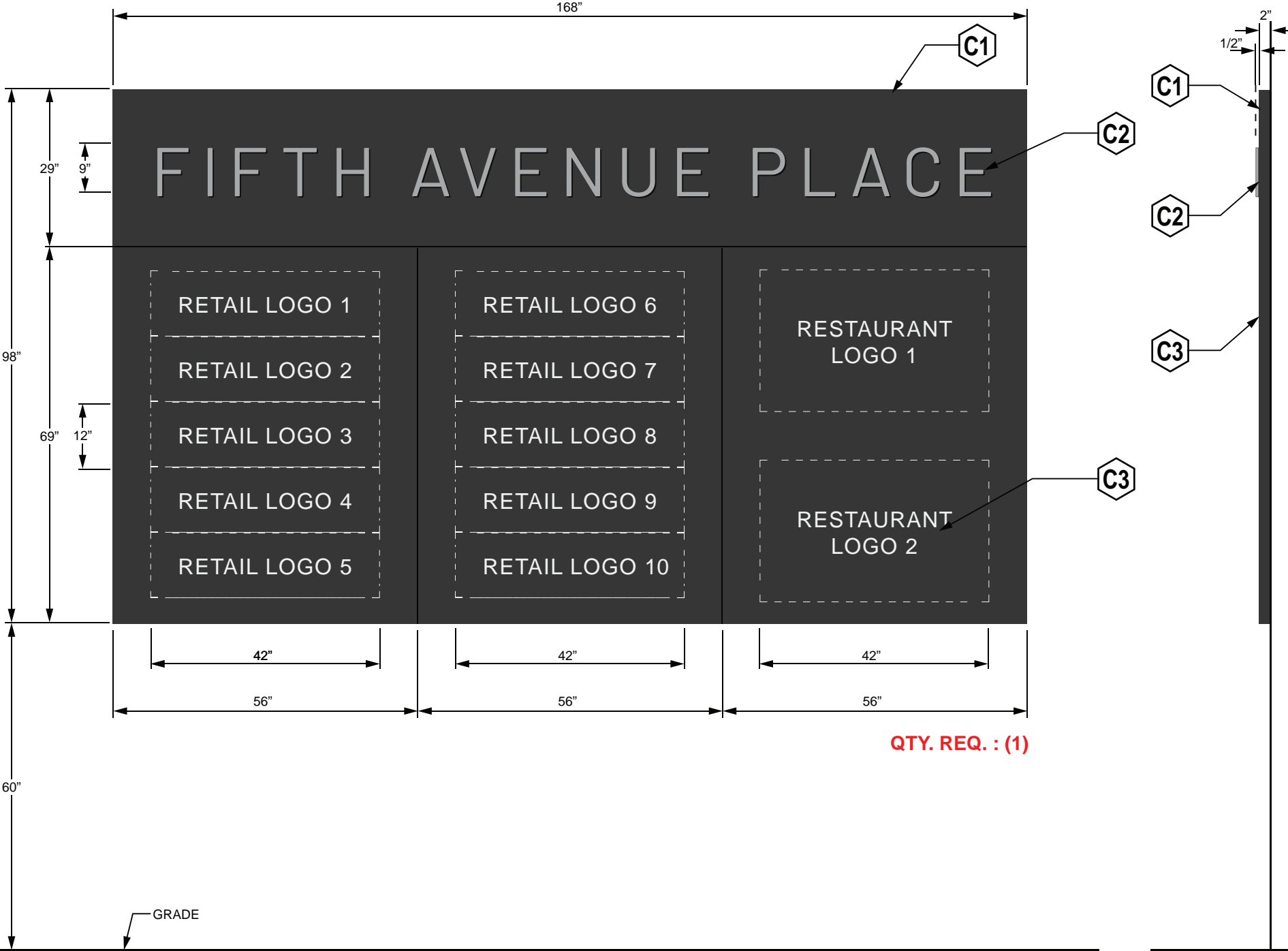
Notice and Disclaimer | Intellectual Property Notice | Copyright Notice
"These plans are the exclusive property of Shamrock Building Services Incorporated and are the result of the original work of its employees. Distribution or exhibition of these plans to anyone other than employees of your company or use of these plans to design or construct a sign similar to the sign embodied herein is not permitted without the express written consent of Shamrock Building Services Incorporated. In the event such permission is given the user agrees to compensate Shamrock Building Services Incorporated a reasonable fee for the time and effort spent creating these plans. These plans contain proprietary and confidential information. Shamrock Building Services Incorporated retains ownership, copyright, and intellectual property rights to the proprietary processes described in these plans. In the event that the proprietary processes contained in these plans are revealed to anyone outside of your company the user agrees to compensate Shamrock Building Services reasonable damages as provided by Local, State, and Federal law."
Copyright 2016 Shamrock Building Services



REV. #	DATE	DESCRIPTION
0	09-21-2021	Original Drawing Completion
1	10-21-2021	Revise per Customer Comments

DESIGN SPECIFICATIONS	
IBC 2015	with Pittsburgh amendments
ASCE 7-10	Minimum Design Loads for Buildings & Other Structures
ACI 318-14	Building Code Requirements for Structural Concrete
ANSI/AISC 360-10	Specification for Structural Steel Buildings
DESIGN LOADS	
Wind	Vult = 115 mph
Exposure	C
Risk Cat.	II
Grnd. Snow	Pg = 30 psf

ITEM	DESCRIPTION	SPECIFICATION
C1	Fabricated, Non-Illuminated Sign Body	2" x 2" x 1/8" Architectural Aluminum Angle Frame with 0.125" Aluminum Face. Surface Painted Face and Returns to be Surface Painted to Match Designer Color M2 RAL 9023 Pearl Grey Old Castle : Pewter 399B02 DESIGNER TO PROVIDE TWO COLOR CHIPS for Paint Matching
C2	Surface Mounted Lettering Reading "Fifth Avenue Place"	CNC Cut, 1/2" Acrylic Surface Mounted and Surface Painted to Match Designer Color M1 Brushed Metal, Metallic Finish DESIGNER TO PROVIDE TWO COLOR CHIPS for Paint Matching
C3	Digitally Printed Tenant Logos	Surface Applied Digitally Printed Graphics with Protective Over-laminate



1 SIGN C1.001 (PENN AVE.) ELEVATION DETAIL
14 SCALE : 1/2" = 1'- 0"

2 END VIEW
14 SCALE : 1/2" = 1'- 0"

MURDOCH ENGINEERING
SIGN STRUCTURE PROFESSIONALS
3399 A-2 NJ-34
MANASQUAN, NJ 08736
(973) 570-8215 x0
Jere Murdoch
Jere Murdoch, PE
Professional Engineer
PA PE Lic. #PE082030
11/8/2021

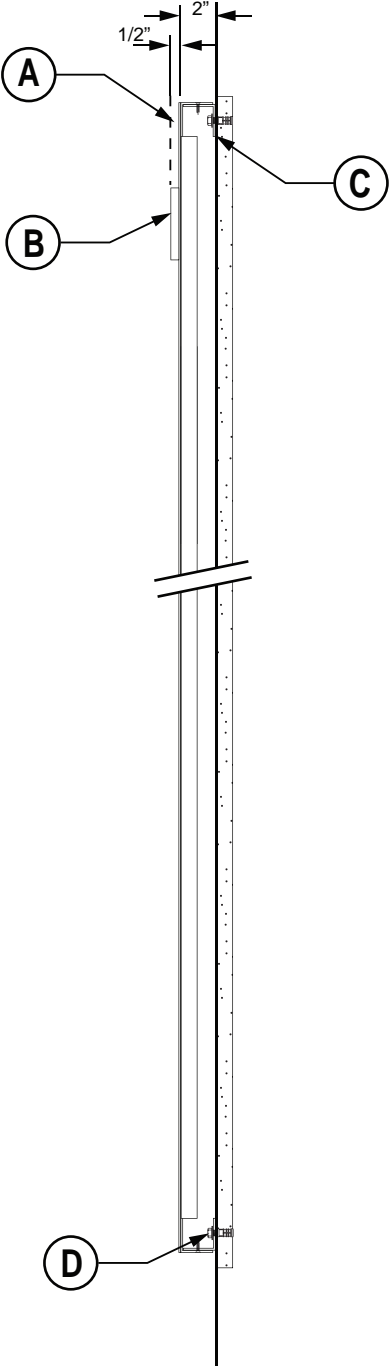
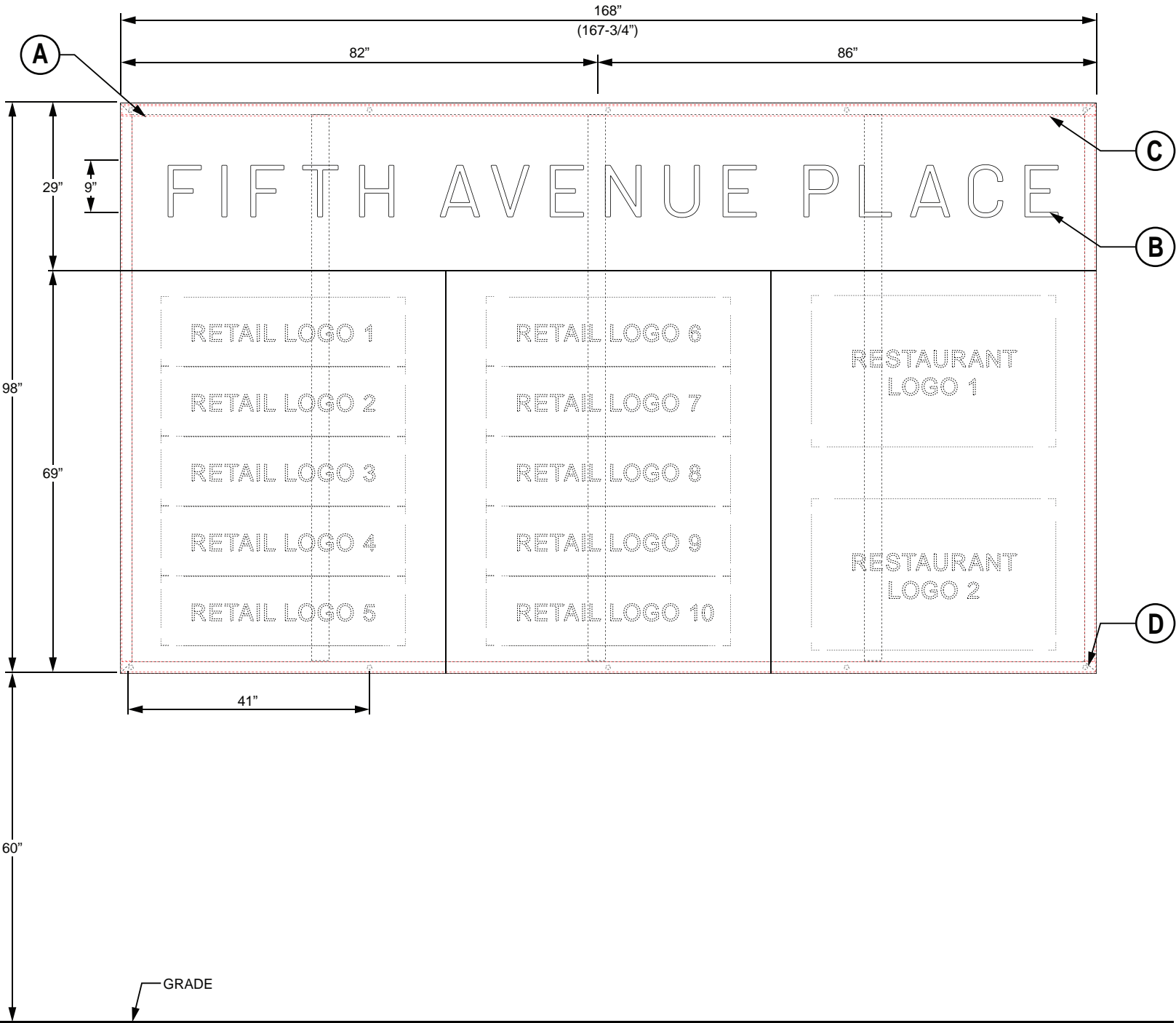
Signature _____ Date _____
PAGE MUST BE PRINTED ON 11" x 17" PAPER FOR SCALE TO BE ACCURATE

Notice and Disclaimer | Intellectual Property Notice | Copyright Notice
"These plans are the exclusive property of Shamrock Building Services Incorporated and are the result of the original work of its employees. Distribution or exhibition of these plans to anyone other than employees of your company or use of these plans to design or construct a sign similar to the sign embodied herein is not permitted without the express written consent of Shamrock Building Services Incorporated. In the event such permission is given the user agrees to compensate Shamrock Building Services Incorporated a reasonable fee for the time and effort spent creating these plans. These plans contain proprietary and confidential information. Shamrock Building Services Incorporated retains ownership, copyright, and intellectual property rights to the proprietary processes described in these plans. In the event that the proprietary processes contained in these plans are revealed to anyone outside of your company the user agrees to compensate Shamrock Building Services reasonable damages as provided by Local, State, and Federal law."
Copyright 2016 Shamrock Building Services



REV. #	DATE	DESCRIPTION
0	09-21-2021	Original Drawing Completion
1	10-21-2021	Revise per Customer Comments

DESIGN SPECIFICATIONS	
IBC 2015	with Pittsburgh amendments
ASCE 7-10	Minimum Design Loads for Buildings & Other Structures
ACI 318-14	Building Code Requirements for Structural Concrete
ANSI/AISC 360-10	Specification for Structural Steel Buildings
DESIGN LOADS	
Wind	Vult = 115 mph
Exposure	C
Risk Cat.	II
Grnd. Snow	Pg = 30 psf



ITEM	DESCRIPTION	SPECIFICATION
A	Fabricated, Non-Illuminated Sign Body	2" x 2" x 1/8" Architectural Aluminum Angle Frame with 0.125" Aluminum Face and 1" x 3" x 1" x 1/8" Aluminum Channel Face Stiffeners
B	Surface Mounted Lettering Reading "Fifth Avenue Place"	CNC Cut, 1/2" Acrylic Surface Mounted Letters
C	Concealed Mounting Dead Frame	2" x 2" x 1/8" Aluminum Angle Frame. Sign Body Returns Mechanically Fastened to Dead Frame
D	Mounting Dead Frame Mechanical Fastener to Building Fascia	3/8" Grade 5 Bolt into Double Shield Expansion Anchor embd. 1-3/4" into solid concrete (TYP.)

- Engineer's Note:
- For alternate hardware acceptable for mounting to solid concrete or filled masonry, provide 3/8"x4" DeWALT Screw-Bolt+ embd. 3-1/4" (TYP.)
 - For hardware acceptable for mounting to hollow masonry, provide 1/4" Toggler Snaptoggle Anchors with A193 B7 bolts (TYP.)
 - Contact Murdoch Engineering for alternate fastening recommendations

MURDOCH ENGINEERING
SIGN STRUCTURE PROFESSIONALS
2399 A-2 NJ-34
MANASQUAN, NJ 08736
(973) 870-8215 x0
11/8/2021
Jere Murdoch, PE
Professional Engineer
PA PE Lic. #PE082030

1 **SIGN C1 TYPICAL CONSTRUCTION ELEVATION**
15 **SCALE : 1/2" = 1'- 0"**

2 **SECTION**
15 **SCALE : 1" = 1'- 0"**

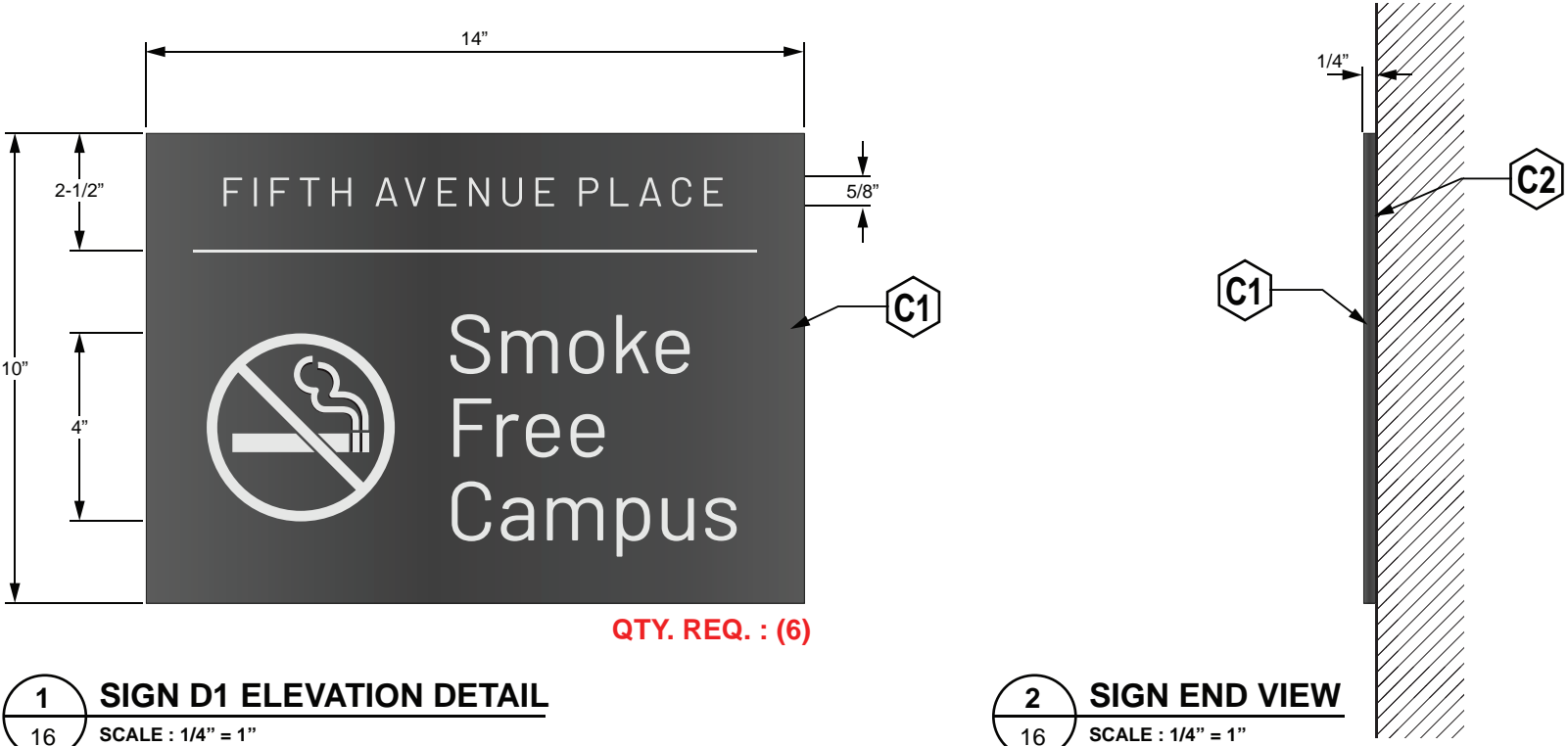
Signature _____ Date _____
PAGE MUST BE PRINTED ON 11" x 17" PAPER FOR SCALE TO BE ACCURATE

Notice and Disclaimer | Intellectual Property Notice | Copyright Notice
"These plans are the exclusive property of Shamrock Building Services Incorporated and are the result of the original work of its employees. Distribution or exhibition of these plans to anyone other than employees of your company or use of these plans to design or construct a sign similar to the sign embodied herein is not permitted without the express written consent of Shamrock Building Services Incorporated. In the event such permission is given the user agrees to compensate Shamrock Building Services Incorporated a reasonable fee for the time and effort spent creating these plans. These plans contain proprietary and confidential information. Shamrock Building Services Incorporated retains ownership, copyright, and intellectual property rights to the proprietary processes described in these plans. In the event that the proprietary processes contained in these plans are revealed to anyone outside of your company the user agrees to compensate Shamrock Building Services reasonable damages as provided by Local, State, and Federal law."
Copyright 2016 Shamrock Building Services



REV. #	DATE	DESCRIPTION
0	09-21-2021	Original Drawing Completion
1	10-21-2021	Revise per Customer Comments

DESIGN SPECIFICATIONS	
IBC 2015	with Pittsburgh amendments
ASCE 7-10	Minimum Design Loads for Buildings & Other Structures
ACI 318-14	Building Code Requirements for Structural Concrete
ANSI/AISC 360-10	Specification for Structural Steel Buildings
DESIGN LOADS	
Wind	Vult = 115 mph
Exposure	C
Risk Cat.	II
Grnd. Snow	Pg = 30 psf



QTY. REQ. : (6)

1 SIGN D1 ELEVATION DETAIL
16 SCALE : 1/4" = 1"

2 SIGN END VIEW
16 SCALE : 1/4" = 1"

ITEM	DESCRIPTION	SPECIFICATION
C1	Sign Background Plate with CNC Engraved and Infilled Lettering and Graphic	1/4" Aluminum Plate with Surface Painted to Match Designer Color M2 RAL 9023 Pearl Grey Old Castle : Pewter 399B02 with Lettering and Graphic Infilled to Match Designer Color M1 Brushed Metal, Metallic Finish DESIGNER TO PROVIDE TWO COLOR CHIPS for Matching
C2	Mounting to Polished Granite Fascia	3M Double Face Foam Tape and Silicone Adhesive

MURDOCH ENGINEERING
SIGN STRUCTURE PROFESSIONALS
2399 A-2 NJ-34
MANASQUAN, NJ 08736
(973) 570-8215 x0
Jere Murdoch
Jere Murdoch, PE
Professional Engineer
PA PE Lic. #PE082030
11/8/2021

Signature

Date

PAGE MUST BE PRINTED ON 11" x 17" PAPER FOR SCALE TO BE ACCURATE

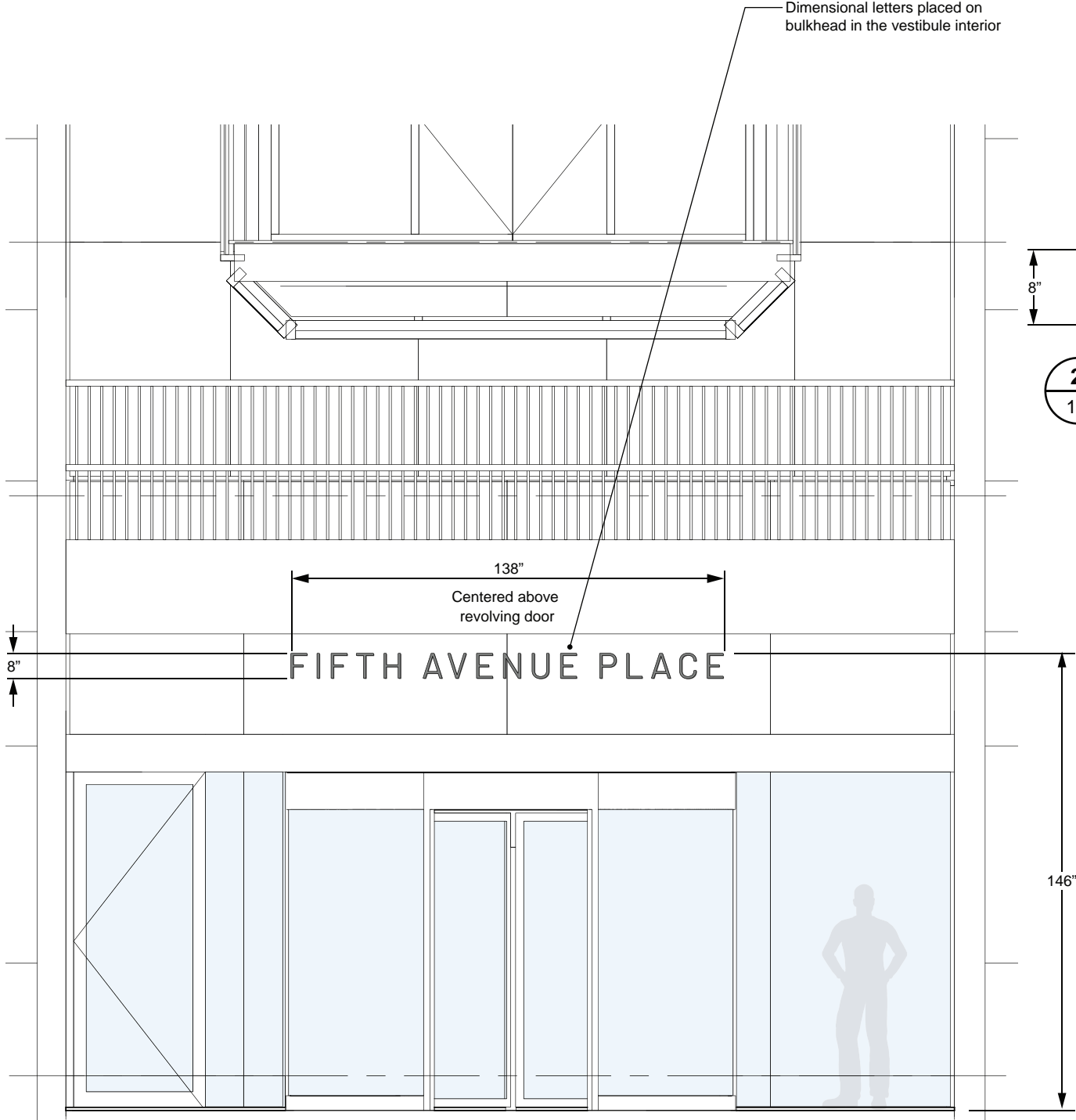
Notice and Disclaimer | Intellectual Property Notice | Copyright Notice

"These plans are the exclusive property of Shamrock Building Services Incorporated and are the result of the original work of its employees. Distribution or exhibition of these plans to anyone other than employees of your company or use of these plans to design or construct a sign similar to the sign embodied herein is not permitted without the express written consent of Shamrock Building Services Incorporated. In the event such permission is given the user agrees to compensate Shamrock Building Services Incorporated a reasonable fee for the time and effort spent creating these plans. These plans contain proprietary and confidential information. Shamrock Building Services Incorporated retains ownership, copyright, and intellectual property rights to the proprietary processes described in these plans. In the event that the proprietary processes contained in these plans are revealed to anyone outside of your company the user agrees to compensate Shamrock Building Services reasonable damages as provided by Local, State, and Federal law."

Copyright 2016 Shamrock Building Services



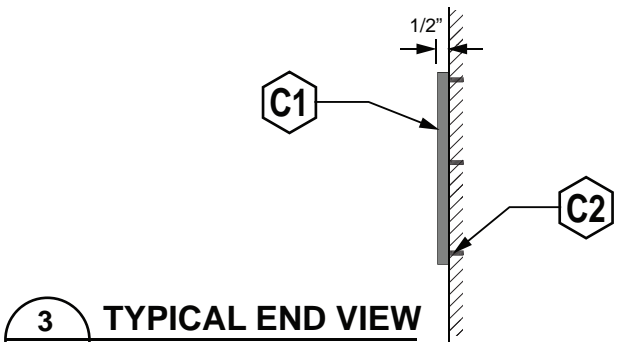
REV. #	DATE	DESCRIPTION
0	10-07-2021	Original Drawing Completion
1	10-21-2021	Revise per Customer Comments



2 PROPOSED SIGN E1 ELEVATION
17 SCALE : 3/4" = 1'- 0"

QTY. REQ. : (1)

DESIGN SPECIFICATIONS	
IBC 2015	with Pittsburgh amendments
ASCE 7-10	Minimum Design Loads for Buildings & Other Structures
ACI 318-14	Building Code Requirements for Structural Concrete
ANSI/AISC 360-10	Specification for Structural Steel Buildings
DESIGN LOADS	
Wind	Vult = 115 mph
Exposure	C
Risk Cat.	II
Grnd. Snow	Pg = 30 psf



3 TYPICAL END VIEW
17 SCALE : 1-1/2" = 1'- 0"

ITEM	DESCRIPTION	SPECIFICATION
C1	Individually CNC Cut Out Acrylic Lettering	1/2" Thick Acrylic Letters with Surface Painted to Match Designer Color M2 RAL 9023 Pearl Grey Old Castle : Pewter 399B02
C2	Proposed Letter Mounting Method	1/4" Fully Threaded SST Studs with Silicone Adhesive

Engineer's Note:
Threaded studs to be embd. min. 2.5" into building exterior w/ embedded lengths coated in GE SCS2000 adhesive or equiv. Provide three (3) studs per letter

MURDOCH ENGINEERING
SIGN STRUCTURE PROFESSIONALS
2099 A-2 NJ-34
MANASQUAN, NJ 08736
(973) 870-8215 x0

Jere Murdoch
Jere Murdoch, PE
Professional Engineer
PA PE Lic. #PE082030

11/8/2021

1 PROPOSED PENN AVENUE INTERIOR ENTRANCE ELEVATION
17 SCALE : 1/4" = 1'- 0"

Signature _____ Date _____
PAGE MUST BE PRINTED ON 11" x 17" PAPER FOR SCALE TO BE ACCURATE

Notice and Disclaimer | Intellectual Property Notice | Copyright Notice
"These plans are the exclusive property of Shamrock Building Services Incorporated and are the result of the original work of its employees. Distribution or exhibition of these plans to anyone other than employees of your company or use of these plans to design or construct a sign similar to the sign embodied herein is not permitted without the express written consent of Shamrock Building Services Incorporated. In the event such permission is given the user agrees to compensate Shamrock Building Services Incorporated a reasonable fee for the time and effort spent creating these plans. These plans contain proprietary and confidential information. Shamrock Building Services Incorporated retains ownership, copyright, and intellectual property rights to the proprietary processes described in these plans. In the event that the proprietary processes contained in these plans are revealed to anyone outside of your company the user agrees to compensate Shamrock Building Services reasonable damages as provided by Local, State, and Federal law."
Copyright 2016 Shamrock Building Services



REV. #	DATE	DESCRIPTION
0	02-22-2022	Original Drawing Completion



1 FIFTH AVENUE PLACE SIGHT LINE PLAN VIEW
18 NO SCALE

Signature _____ Date _____
PAGE MUST BE PRINTED ON 11" x 17" PAPER FOR SCALE TO BE ACCURATE

Notice and Disclaimer | Intellectual Property Notice | Copyright Notice
These plans are the exclusive property of Shamrock Building Services Incorporated and are the result of the original work of its employees. Distribution or exhibition of these plans to anyone other than employees of your company or use of these plans to design or construct a sign similar to the sign embodied herein is not permitted without the express written consent of Shamrock Building Services Incorporated. In the event such permission is given the user agrees to compensate Shamrock Building Services Incorporated a reasonable fee for the time and effort spent creating these plans. These plans contain proprietary and confidential information. Shamrock Building Services Incorporated retains ownership, copyright, and intellectual property rights to the proprietary processes described in these plans. In the event that the proprietary processes contained in these plans are revealed to anyone outside of your company the user agrees to compensate Shamrock Building Services reasonable damages as provided by Local, State, and Federal law.
Copyright 2016 Shamrock Building Services



REV. #	DATE	DESCRIPTION
0	02-22-2022	Original Drawing Completion



1 PROPOSED SIGN A1 - STANWIX STREET
19 NO SCALE



2 EXISTING SIGNAGE ON BUILDINGS SURROUNDING FIFTH AVENUE PLACE
19 NO SCALE

Notice and Disclaimer | Intellectual Property Notice | Copyright Notice

"These plans are the exclusive property of Shamrock Building Services Incorporated and are the result of the original work of its employees. Distribution or exhibition of these plans to anyone other than employees of your company or use of these plans to design or construct a sign similar to the sign embodied herein is not permitted without the express written consent of Shamrock Building Services Incorporated. In the event such permission is given the user agrees to compensate Shamrock Building Services Incorporated a reasonable fee for the time and effort spent creating these plans. These plans contain proprietary and confidential information. Shamrock Building Services Incorporated retains ownership, copyright, and intellectual property rights to the proprietary processes described in these plans. In the event that the proprietary processes contained in these plans are revealed to anyone outside of your company the user agrees to compensate Shamrock Building Services reasonable damages as provided by Local, State, and Federal law."

Copyright 2016 Shamrock Building Services



REV. #	DATE	DESCRIPTION
0	02-22-2022	Original Drawing Completion



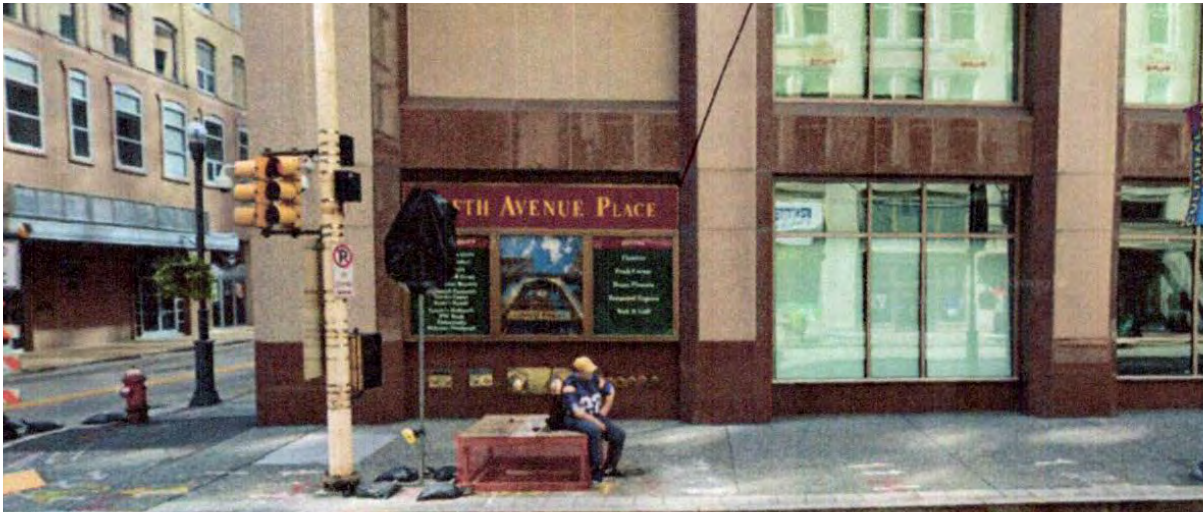
1 EXISTING STANWIX STREET CONDITION (SIGN ALREADY REMOVED)
20 NO SCALE



2 EXISTING LIBERTY AVENUE CONDITION
20 NO SCALE



3 EXISTING FIFTH AVENUE CONDITION
20 NO SCALE



4 EXISTING PENN AVENUE CONDITION
20 NO SCALE

Notice and Disclaimer | Intellectual Property Notice | Copyright Notice

"These plans are the exclusive property of Shamrock Building Services Incorporated and are the result of the original work of its employees. Distribution or exhibition of these plans to anyone other than employees of your company or use of these plans to design or construct a sign similar to the sign embodied herein is not permitted without the express written consent of Shamrock Building Services Incorporated. In the event such permission is given the user agrees to compensate Shamrock Building Services Incorporated a reasonable fee for the time and effort spent creating these plans. These plans contain proprietary and confidential information. Shamrock Building Services Incorporated retains ownership, copyright, and intellectual property rights to the proprietary processes described in these plans. In the event that the proprietary processes contained in these plans are revealed to anyone outside of your company the user agrees to compensate Shamrock Building Services reasonable damages as provided by Local, State, and Federal law." Copyright 2016 Shamrock Building Services



GENERAL:

- ALL MATERIALS AND WORK SHALL CONFORM TO THE REQUIREMENTS OF THE APPLICABLE INTERNATIONAL BUILDING CODE (IBC).
- CONSTRUCTION METHODS AND PROJECT SAFETY: DRAWINGS AND SPECIFICATIONS REPRESENT THE FINISHED STRUCTURE AND DO NOT INDICATE METHODS, PROCEDURES, OR SEQUENCE OF CONSTRUCTION. TAKE NECESSARY PRECAUTIONS TO MAINTAIN AND ENSURE THE INTEGRITY OF THE STRUCTURE DURING CONSTRUCTION. THE EOR WILL NOT ENFORCE SAFETY MEASURES OR REGULATIONS. THE CONTRACTOR SHALL DESIGN, CONSTRUCT, AND MAINTAIN ALL SAFETY DEVICES AND SHALL BE SOLELY RESPONSIBLE FOR CONFORMING TO ALL LOCAL, STATE, AND FEDERAL SAFETY AND HEALTH STANDARDS, LAWS, AND REGULATIONS.
- THE CONTRACTOR SHALL VERIFY ALL DIMENSIONS, ELEVATIONS AND SITE CONDITIONS PRIOR TO THE START OF CONSTRUCTION AND NOTIFY THE ENGINEER IMMEDIATELY OF ANY DISCREPANCIES OR INCONSISTENCIES THAT ARE FOUND. NOTED DIMENSIONS TAKE PRECEDENCE OVER SCALED DIMENSIONS. DO NOT SCALE DRAWINGS.
- ALL OMISSIONS AND/OR CONFLICTS BETWEEN THE VARIOUS ELEMENTS OF THE WORKING DRAWINGS AND SPECIFICATIONS SHALL BE BROUGHT TO THE ATTENTION OF THE ENGINEER AND FIELD INSPECTOR. THE ENGINEER SHALL PROVIDE A SOLUTION PRIOR TO PROCEEDING WITH ANY WORK AFFECTED BY THE CONFLICT OR OMISSION.
- WHERE NO CONSTRUCTION DETAILS ARE SHOWN OR NOTED FOR ANY PART OF THE WORK, CONSTRUCT IN ACCORDANCE WITH THE STEEL CONSTRUCTION MANUAL, 14TH EDITION OR 2010 ALUMINUM DESIGN MANUAL .
- WHEN A DETAIL IS IDENTIFIED AS TYPICAL, THE CONTRACTOR IS TO APPLY THIS DETAIL IN ESTIMATING AND CONSTRUCTION TO EVERY LIKE CONDITION WHETHER OR NOT THE REFERENCE IS REPEATED IN EVERY INSTANCE.
- ANY CHANGE TO THE DESIGN AS SHOWN ON THE DRAWINGS REQUIRES PRIOR WRITTEN APPROVAL FROM DESIGN ENGINEER OF RECORD BEFORE CONSTRUCTION.
- WORK PERFORMED IN CONFLICT WITH THE STRUCTURAL DRAWINGS OR APPLICABLE BUILDING CODE REQUIREMENTS SHALL BE CORRECTED AT THE EXPENSE OF THE CONTRACTOR.
- VERIFICATION: VERIFY ALL DIMENSIONS, ELEVATIONS, AND SITE CONDITIONS BEFORE STARTING WORK. NOTIFY THE EOR IMMEDIATELY OF ANY DISCREPANCIES.

EXISTING CONDITIONS:

- IF EXISTING CONDITIONS ARE NOT AS DETAILED IN THIS DESIGN, THE INSTALLER SHALL CEASE WORK AND NOTIFY MURDOCH ENGINEERING IMMEDIATELY.
- MURDOCH ENGINEERING WILL NOT BE PERFORMING ON-SITE INSPECTIONS OR VERIFICATIONS. IT IS THE RESPONSIBILITY OF THE INSTALLER, STRUCTURE OWNER, AND PROPERTY OWNER TO IDENTIFY EXISTING CONDITIONS AND CONTACT MURDOCH ENGINEERING WITH ANY DISCREPANCIES OR CONCERNS.
- INSTALLER SHALL CONFIRM THE DIAMETER AND THICKNESS OF EXISTING MEMBERS AND NOTIFY MURDOCH ENGINEERING OF ANY DISCREPANCIES.
- INSTALLER SHALL INSPECT AND CONFIRM THE QUALITY OF EXISTING STRUCTURE AS "IN GOOD REPAIR". IF THERE ARE ANY INDICATIONS THAT THIS IS NOT THE CASE, INSTALLER SHALL CEASE WORK IMMEDIATELY AND NOTIFY MURDOCH ENGINEERING.
- ANY EXISTING INFORMATION SHOWN HAS BEEN FURNISHED BY THE PERSON(S) OR COMPANY THIS DOCUMENT WAS PREPARED FOR (SEE TITLE BLOCK). MURDOCH ENGINEERING IN NO WAY CERTIFIES THIS INFORMATION AS "AS-BUILT". IF THERE IS ANY REASON TO BELIEVE THE EXISTING CONDITIONS DETAILED HEREIN ARE NOT ACCURATE, MURDOCH ENGINEERING SHALL BE NOTIFIED IMMEDIATELY.

STEEL

1. STEEL SHAPES SHALL CONFORM TO THE FOLLOWING:

ROUND HSS	ASTM A500, GR B	Fy=42 KSI MIN.
SQUARE/RECT HSS	ASTM A500, GR B	Fy=46 KSI MIN.
THREADED ROD	F1554 GR 55	Fy=55 KSI MIN.
STEEL PLATE STD.	ASTM A36 ASTM	Fy=36 KSI MIN.
PIPE	A53, GR B	Fy=35 KSI MIN.

- BOLTS SHALL CONFORM TO ASTM A325 UNO.
- BOLTS AND THREADED ROD SHALL BE HOT-DIP GALVANIZED PER ASTM F2329 UNO.
- ANCHOR BOLTS SHALL CONFORM TO ASTM F1554 UNO.
- NUTS SHALL CONFORM TO ASTM A563.
- WASHERS SHALL CONFORM TO ASTM F844.
- STEEL HARDWARE SHALL BE HOT-DIP GALVANIZED PER ASTM A153 UNO
- WELDING:
 - WELD STRUCTURAL STEEL IN COMPLIANCE WITH ANSI/AWS D1.1 AND AISC SPECIFICATION, CHAPTER J. WELDERS SHALL BE CERTIFIED AS REQUIRED BY GOVERNING CODE AUTHORITY. WELDING SHALL BE DONE BY ELECTRIC ARC PROCESS USING LOW-HYDROGEN ELECTRODES WITH SPECIFIED TENSILE STRENGTH NOT LESS THAN 70 KSI UNLESS NOTED OTHERWISE.
 - ALL SHOP AND FIELD WELDS SHALL BE PERFORMED BY AN AWS OR ICC CERTIFIED WELDER WITH ACTIVE STATUS AT TIME OF WELDING
 - UNLESS A LARGER WELD SIZE IS INDICATED, PROVIDE MINIMUM SIZE WELDS PER AISC SPECIFICATION, SECTION J2, TABLE J2.4
 - BASE PLATES SHALL BE WELDED ON TOP AND BOTTOM WITH CONTINUOUS WELDS OF AT LEAST 1/4" (IF PLATE IS CUT TO FIT TUBE INTO PLATE)

ALUMINUM:

- FABRICATE AND ERECT ALUMINUM IN COMPLIANCE WITH THE ALUMINUM ASSOCIATION (AA) 2010 ALUMINUM DESIGN MANUAL (ADM) 1, THE SPECIFICATIONS FOR ALUMINUM SHEET METAL WORK (ASM35), AND IBC CHAPTER 20.
- PIPE AND TUBE SHALL BE 6061-T6 PER ASTM B241 OR B429 WITH Ft_u=38 KSI MIN, Ft_y=35 KSI MIN, Ft_uw=24 KSI MIN, Ft_yw=15 KSI MIN.
- STD STRUCTURAL PROFILES SHALL BE 6061-T6 PER B308 WITH Ft_u=38 KSI MIN, Ft_y=35 KSI MIN, Ft_uw=24 KSI MIN, Ft_yw=15 KSI MIN.
- SHEET AND PLATE SHALL BE 6061-T6 PER ASTM B209 WITH Ft_u=42 KSI MIN, Ft_y=35 KSI MIN, Ft_uw=24 KSI MIN, Ft_yw=15 KSI MIN.
- EXTRUSIONS SHALL BE 6061-T6 PER ASTM B241 OR B429 WITH Ft_u=38 KSI MIN, Ft_y=35 KSI MIN, Ft_uw=24 KSI MIN, Ft_yw=15 KSI MIN.
- ALL SHOP AND FIELD WELDS SHALL BE PERFORMED BY AN AWS OR ICC CERTIFIED WELDER WITH CURRENT STATUS AT TIME OF WELDING
- UNLESS A LARGER WELD SIZE IS INDICATED, PROVIDE MINIMUM SIZE WELD PER ADM. ALL ALUMINUM WELDED JOINTS SHALL HAVE WELD SIZES OF AT LEAST 1¹/₄ INCH
- FILLET WELDS SHALL NOT EXCEED THINNEST MEMBER WALL THICKNESS JOINED.
- ALUMINUM WELD FILLER SHALL BE 5356 ALLOY
- WELDING PROCESS GMAW OR GTAW SHALL BE IN ACCORDANCE WITH AWS D1.2
- ALUMINUM CHANNEL LETTERS SHALL BE CONSTRUCTED OF 0.090" RETURNS AND 0.125" BACKS MINIMUM, UNLESS A LARGER SIZE IS INDICATED ON DRAWINGS. THIS NOTE SHALL SUPERCEDE DRAWING DETAILS.
- PROVIDE NEOPRENE GASKET BETWEEN DISSIMILAR METALS TO PREVENT GALVANIC CORROSION
- ALUMINUM DIRECTLY EMBEDDED INTO CONCRETE SHALL BE CAPPED AT BOTTOM AND COATED WITH BITUMINOUS COATING OR POLYURETHANE WHERE IN CONTACT WITH CONCRETE.
- FASTENERS BETWEEN DISSIMILAR METALS SHALL BE STAINLESS STEEL 316.

CONCRETE & REINFORCEMENT

- MINIMUM 28-DAY COMPRESSIVE STRENGTH (f_c') SHALL BE 3,000 PSI. THE MAXIMUM WATER TO CEMENT RATIO SHALL BE 0.45 BY WEIGHT. A MINIMUM OF 5-3/4 BAGS OF CEMENT SHALL BE USED PER CUBIC YARD WITH A SLUMP OF 4" +/- 1.
- REINFORCEMENT TO BE ASTM A615 GR 60, F_y=60 KSI UNO
- CALCIUM CHLORIDE OR ADDED CHLORIDE IS NOT PERMITTED
- VIBRATION: ALL REINFORCED CONCRETE SHALL BE CONSOLIDATED WITH MECHANICAL VIBRATORS
- CONCRETE CONSTRUCTION SHALL BE IN ACCORDANCE WITH ACI 318-14
- PROVIDE A MINIMUM OF 2-1/2" COVER OF ALL EMBEDDED STEEL REBAR AND A MINIMUM OF 6 INCHES OF COVER FOR DIRECT BURIED PIPE OR TUBE MEMBERS.

FOUNDATIONS

- CONCRETE POURED INTO CONSTRAINED EARTH EXCAVATIONS MUST CURE UNDER PROPER CONDITIONS FOR A MINIMUM OF 7 DAYS PRIOR TO SIGN BOX INSTALLATION. (EXCEPTION: IF THE OVERALL HEIGHT OF THE SIGN IS LESS THAN 20 FEET AND THE SIGN IS ADEQUATELY BRACED AGAINST WIND LOADS FOR A MINIMUM OF 4 DAYS, THE BOX MAY BE INSTALLED THE SAME DAY AS THE FOOTING IS POURED)
- FOOTINGS MUST BE POURED AGAINST UNDISTURBED EARTH. SOIL BACKFILL IS UNACCEPTABLE. WHEN A SONOTUBE IS USED AS THE FORM, 3/4" BLUESTONE OR CONCRETE SHALL BE USED TO BACKFILL THE SPACE BETWEEN THE SONOTUBE AND UNDISTURBED EARTH.
- COLD WEATHER PLACEMENT: PROTECT CONCRETE WORK FROM PHYSICAL DAMAGE OR REDUCED STRENGTH THAT COULD BE CAUSED BY FROST, FREEZING ACTIONS OR LOW TEMPERATURES. DO NOT POUR CONCRETE DURING OR WHEN FREEZING TEMPERATURES ARE ANTICIPATED WITHIN 3 DAYS OF POUR.
- REINFORCEMENT IS NOT REQUIRED FOR DIRECT BURIAL TYPE SIGN FOOTINGS FOR SIGNS OF 25 FEET OVERALL HEIGHT OR LESS, DIRECT BURIED STEEL SHALL EXTEND TO 6 INCHES FROM BOTTOM OF FOOTING.
- FOR ANCHOR BOLT/ BASE PLATE - SQUARE FOOTINGS, PROVIDE A MINIMUM OF #5 VERTICAL REBAR @ 12" O.C., 4" OFFSET FROM PERIMETER, TOP AND BOTTOM OF FOOTING. PROVIDE #3 HORIZONTAL TIES @ 12" O.C. UNLESS OTHERWISE NOTED.
- FOR ANCHOR BOLT/ BASE PLATE - ROUND FOOTINGS, PROVIDE A MINIMUM OF SIX (6) VERTICAL #5 REBARS, EVENLY SPACED, 4" OFFSET FROM FOOTING PERIMETER & #3 HORIZONTAL TIES, 12" O.C. Unless otherwise noted.
- ANCHOR BOLTS SHALL BE TIED TO REBAR CAGE AT A MINIMUM OF TWO LOCATIONS PER ANCHOR BOLT
- FOOTING DESIGN ASSUMES FOOTING SHALL BE EXCAVATED AND POURED IN UNDISTURBED NATURAL EARTH, CAPABLE OF WITHSTANDING A MINIMUM 1,500 PSF VERTICAL DESIGN BEARING PRESSURE AND 150 PSF/FT OF DEPTH OF LATERAL BEARING PRESSURE BASED ON SOIL DATA OBTAINED FROM THE USGS SOIL SURVEY.
- IF CLAY, SILTY - CLAY, ORGANIC OR FILL SOIL IS ENCOUNTERED UPON EXCAVATION, CONTACT MURDOCH ENGINEERING FOR FOOTING DESIGN MODIFICATION PRIOR TO CONSTRUCTION.

SCOPE OF WORK:

- LIMITS OF LIABILITY TO EXTEND ONLY TO THE QUANTITY INDICATED. ATTEMPTS IN PART OR IN WHOLE TO INSTALL GREATER QUANTITIES THAN THOSE SPECIFIED WITHOUT CONSULTING MURDOCH ENGINEERING SHALL VOID ALL PROFESSIONAL LIABILITY AND COVERAGE.



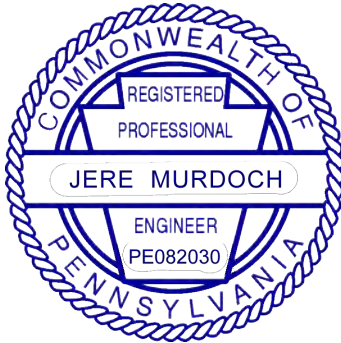
murdochengineering.com
(973) 570-8215
2399 NJ-34 A-2
Manasquan, NJ 08736

PREPARED FOR:
Shamrock Signs

PROJECT TITLE:
**Fifth Avenue Place
Signage Packet**

PROJECT ADDRESS:
120 Fifth Avenue
Pittsburgh PA 15222

DESIGN SPECIFICATIONS	
IBC 2015	with Pittsburgh amendments
ASCE 7-10	Minimum Design Loads for Buildings & Other Structures
ACI 318-14	Building Code Requirements for Structural Concrete
ANSI/AISC 360-10	Specification for Structural Steel Buildings
DESIGN LOADS	
Wind	Vult = 115 mph
Exposure	C
Risk Cat.	II
Grnd. Snow	Pg = 30 psf



MURDOCH ENGINEERING
SIGN STRUCTURE PROFESSIONALS

2399 A-2 NJ-34
MANASQUAN, NJ 08736
(973) 570-8215

Jere Murdoch 11/8/2021

Jere Murdoch, PE
Professional Engineer
PA PE Lic. #PE082030

DWG TITLE:
GENERAL NOTES

SHEET: **S.1** SIZE: **B**

The designs, details and specifications contained in this drawing are confidential. The recipients of this drawing hereby acknowledge and agree that it is the sole property of Murdoch Engineering and that they shall neither use nor reveal any of the designs, details and specifications contained in this drawing, outside of the contractual agreement expressed written permission from Murdoch Engineering.

Deviations from this drawing shall not be made without consulting Murdoch Engineering. In case of incongruities between drawings, specifications, and details included in contract documents, Murdoch Engineering shall decide which indication must be followed and their decision shall be final.

Copyright Murdoch Engineering.
All rights reserved.