

The Waterfront Building

200 First Avenue

Pittsburgh, PA 15222



OFFERING SUMMARY

Lease Rate:	Negotiable
Building Size:	53,250 SF
Available SF:	2,078 - 3,400 SF
Zoning:	Golden Triangle District C
Market:	Pittsburgh

PROPERTY OVERVIEW

SVN | Three Rivers Commercial Advisors is pleased to present for lease this four story Historic Landmark Building in Firstside District with unique architectural character.

Location offers numerous parking options and public transportation within blocks along with local amenities nearby such as restaurant and shops in Market Square and Station Square. Offers easy access to I-376 and I-279.

PROPERTY HIGHLIGHTS

- Light-filled atrium spanning each floor
- Recently remodeled lobby area
- Numerous parking options within blocks
- 2,078 SF Available on the 1st floor
- 3,156 SF Available on the 2nd floor
- 3,400 SF Available on the 3rd floor

Richard L. Beynon
412.536.5036 | 412.298.2236
rbeynon@svn.com

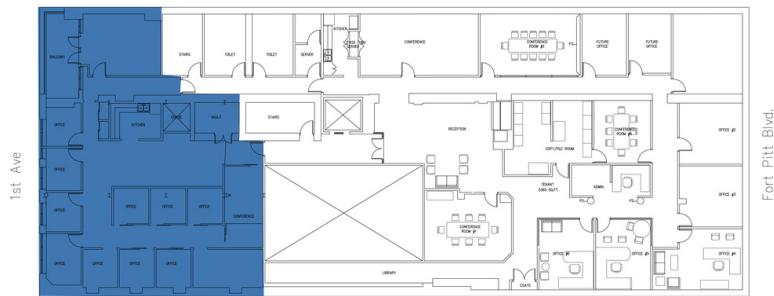
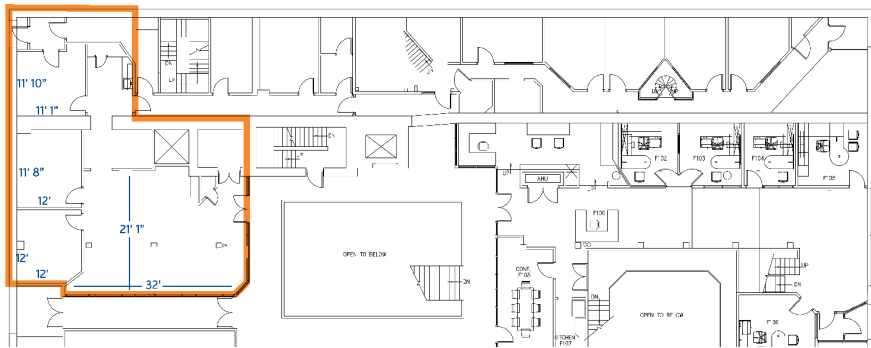
The information presented here is deemed to be accurate, but it has not been independently verified. We make no guarantee, warranty or representation. It is your responsibility to independently confirm accuracy and completeness. All SVN® offices are independently owned and operated.



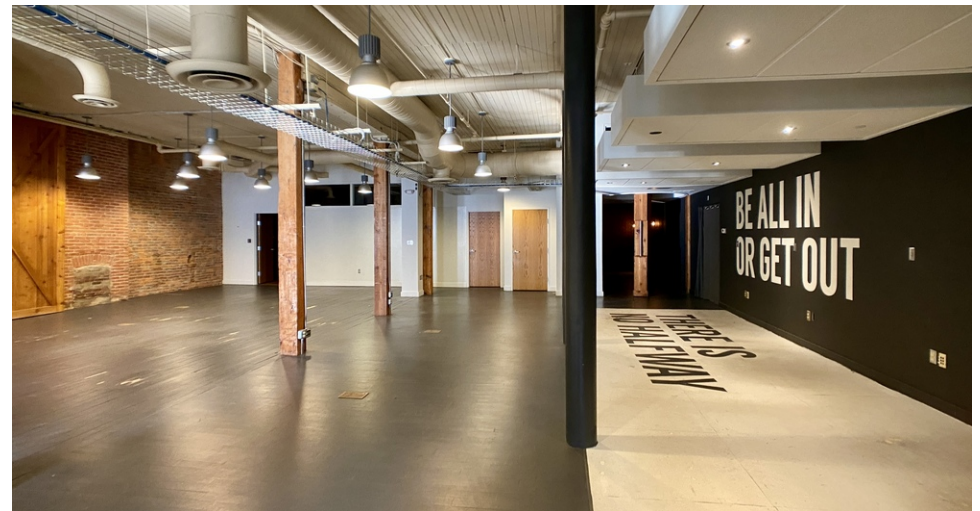
The Waterfront Building

The Waterfront Building

200 First Avenue, Pittsburgh, PA 15222



4th Floor Plan



Richard L. Beynon
412.536.5036 | 412.298.2236
rbeynon@svn.com

The information presented here is deemed to be accurate, but it has not been independently verified. We make no guarantee, warranty or representation. It is your responsibility to independently confirm accuracy and completeness. All SVN® offices are independently owned and operated.

