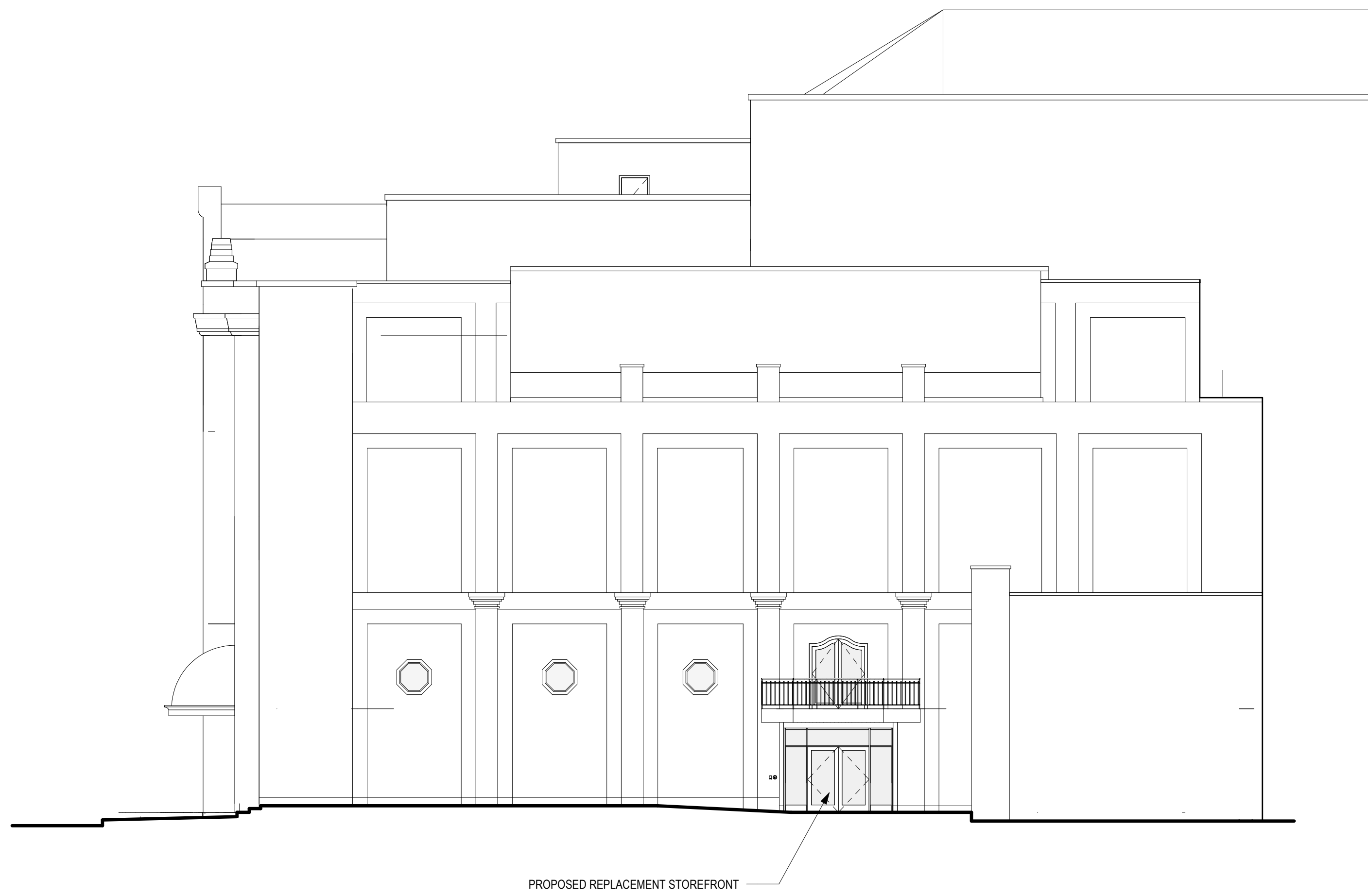


1 PENN AVENUE OVERALL ELEVATION  
A6.02 Scale: 3/32" = 1'-0"



2 SIXTH STREET OVERALL ELEVATION  
A6.02 Scale: 3/32" = 1'-0"



3 PLAZA (LIBERTY AVENUE) OVERALL ELEVATION  
A6.02 Scale: 3/32" = 1'-0"

REVISION HISTORY		
NO.	DATE	DESCRIPTION

DEVELOPMENT  
ACTIVITIES MEETING

**MacLachlan  
Cornelius &  
Filoni**  
ARCHITECTS, INC.  
437 GRANT STREET, SUITE 1600  
PITTSBURGH, PENNSYLVANIA 15219

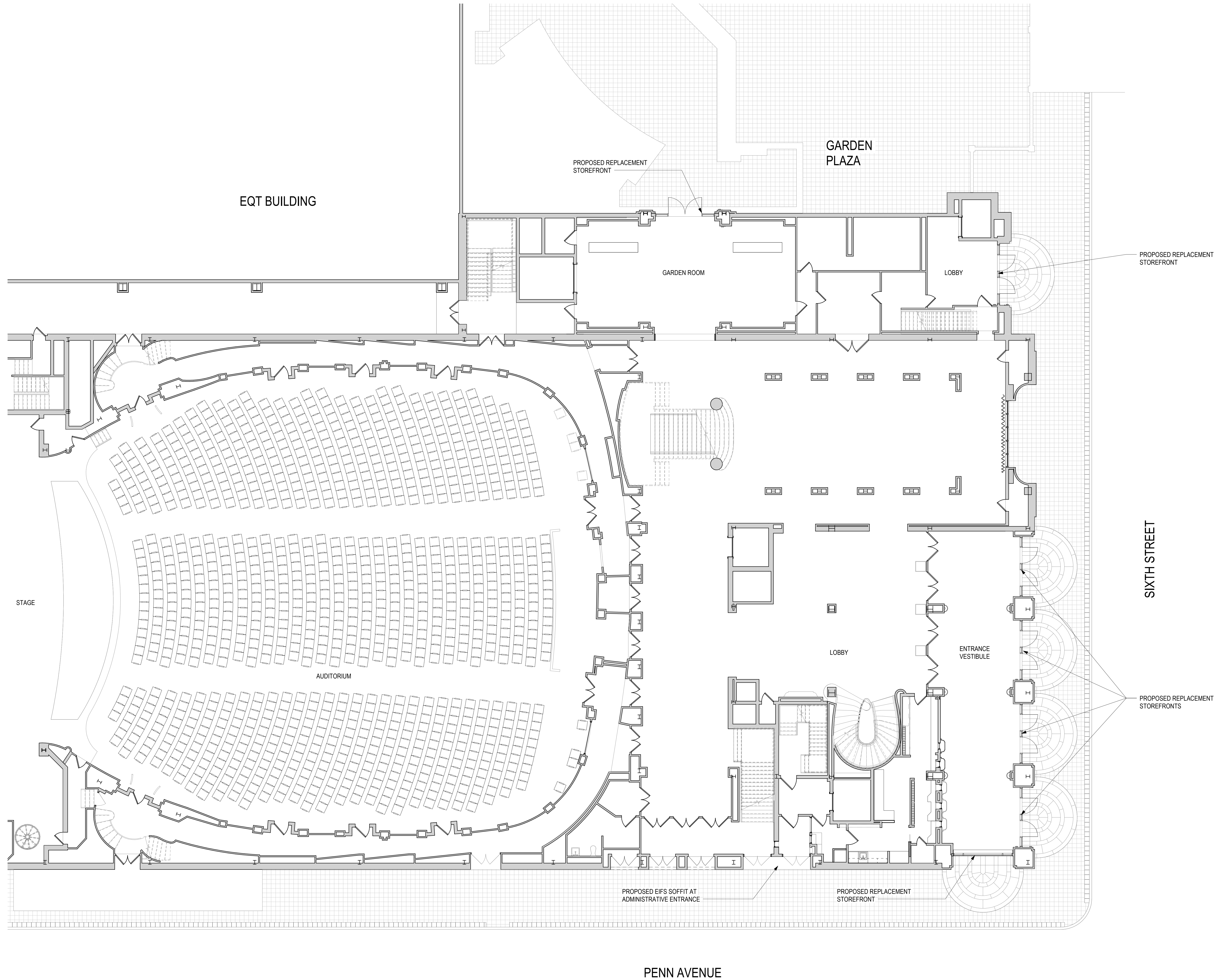
© 2021 MacLachlan Cornelius & Filoni, Inc.

**THE  
PITTSBURGH  
SYMPHONY**  
HEINZ HALL  
SUMMER 2020 PROJECTS

600 PENN AVENUE, PITTSBURGH,  
PENNSYLVANIA 15222  
CONTRACT NO. DATE: FEB. 22, 2021  
36019049

OVERALL EXTERIOR  
ELEVATIONS

A6.02



REVISION HISTORY		
NO.	DATE	DESCRIPTION

DEVELOPMENT  
ACTIVITIES MEETING

**MacLachlan  
Cornelius &  
Filoni**  
ARCHITECTS, INC.  
437 GRANT STREET, SUITE 1600  
PITTSBURGH, PENNSYLVANIA 15219

© 2021 MacLachlan Cornelius & Filoni, Inc.

**THE  
PITTSBURGH  
SYMPHONY**  
HEINZ HALL  
SUMMER 2020 PROJECTS

600 PENN AVENUE, PITTSBURGH,  
PENNSYLVANIA 15222  
CONTRACT NO. 56019049 DATE: FEB. 22, 2021

FIRST FLOOR PLAN

A3.00

1 PARTIAL FIRST FLOOR PLAN - LOBBY ENTRANCE  
A3.00 Scale: 1/8" = 1'-0"



C:\Users\mcfiloni\Documents\173019049 Summer 2020 Projects\_Arch\A3.00 Partial First Floor.dwg





PRE-1971 LOEWS PENN THEATER APPEARANCE AT SIXTH & PENN





EXISTING SIXTH STREET ENTRANCES





TYPICAL EXISTING ENTRANCE DOOR





EXISTING ENTRANCE DOOR DETERIORATED CONDITION





1 SIXTH STREET ENTRANCE ELEVATION  
A6.03 Scale: 3/16" = 1'-0"

DEVELOPMENT ACTIVITIES MEETING

THE PITTSBURGH SYMPHONY

HEINZ HALL

SUMMER 2020 PROJECTS

© 2021 MacLachlan Cornelius & Filoni, Inc

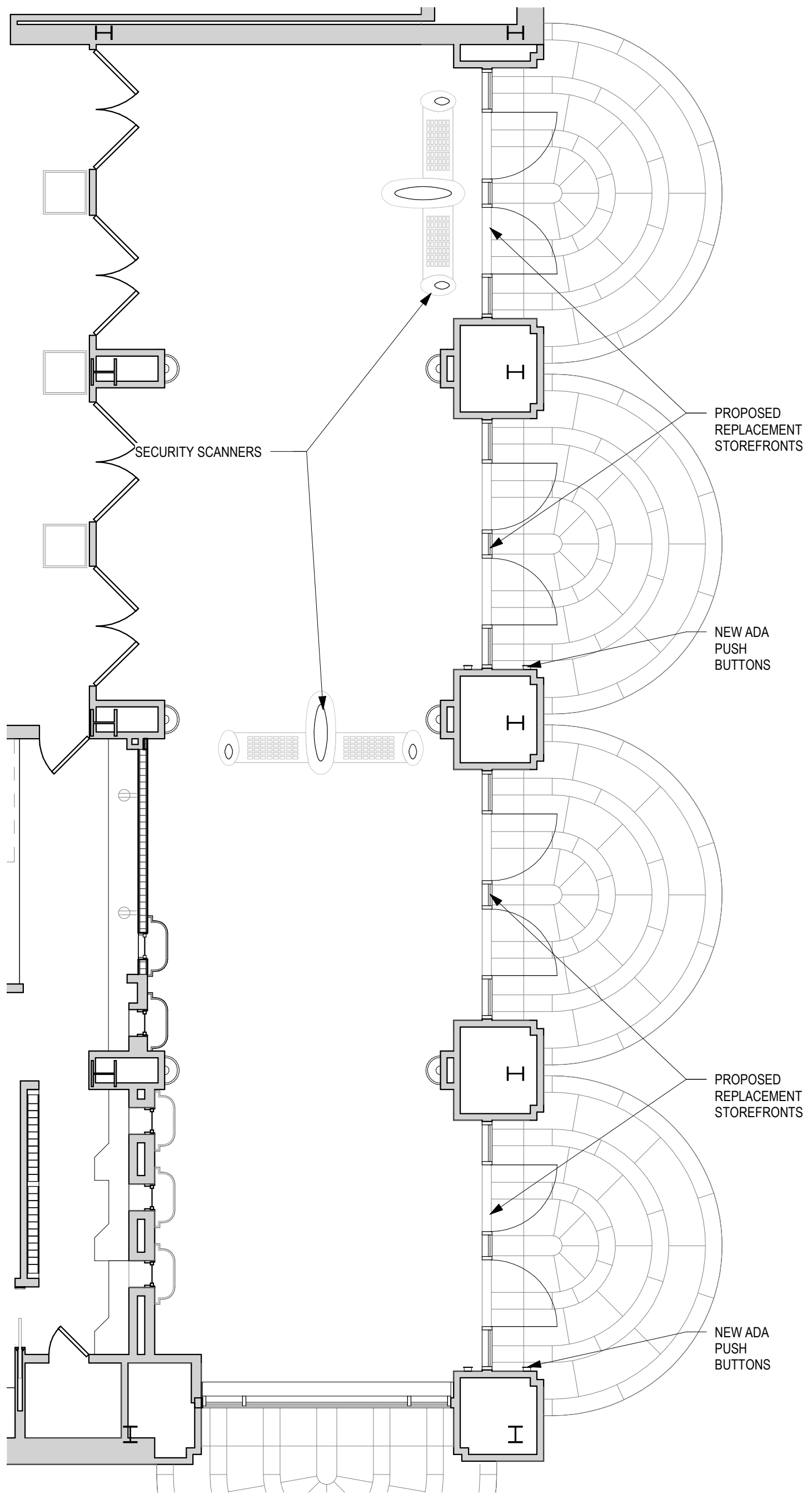
DATE: 04/30/21

CONTRACT NO. 36019049

**MacLachlan  
Cornelius &  
Filoni**  
ARCHITECTS, INC.  
437 GRANT STREET, SUITE 1600  
PITTSBURGH, PENNSYLVANIA 15219

A6.03





1  
A3.00A

## PARTIAL FIRST FLOOR PLAN - LOBBY ENTRANCE

Scale: 3/16" = 1'-0"

DEVELOPMENT ACTIVITIES MEETING

THE PITTSBURGH SYMPHONY  
HEINZ HALL  
SUMMER 2020 PROJECTS

SCALE: 3/16" = 1'-0"

DATE: 04/30/21

CONTRACT NO. 36019049

**MacLachlan  
Corneilus  
Filoni & Co.**  
ARCHITECTS, INC.  
437 GRANT STREET SUITE 1600  
PITTSBURGH, PENNSYLVANIA 15219

A3.00A





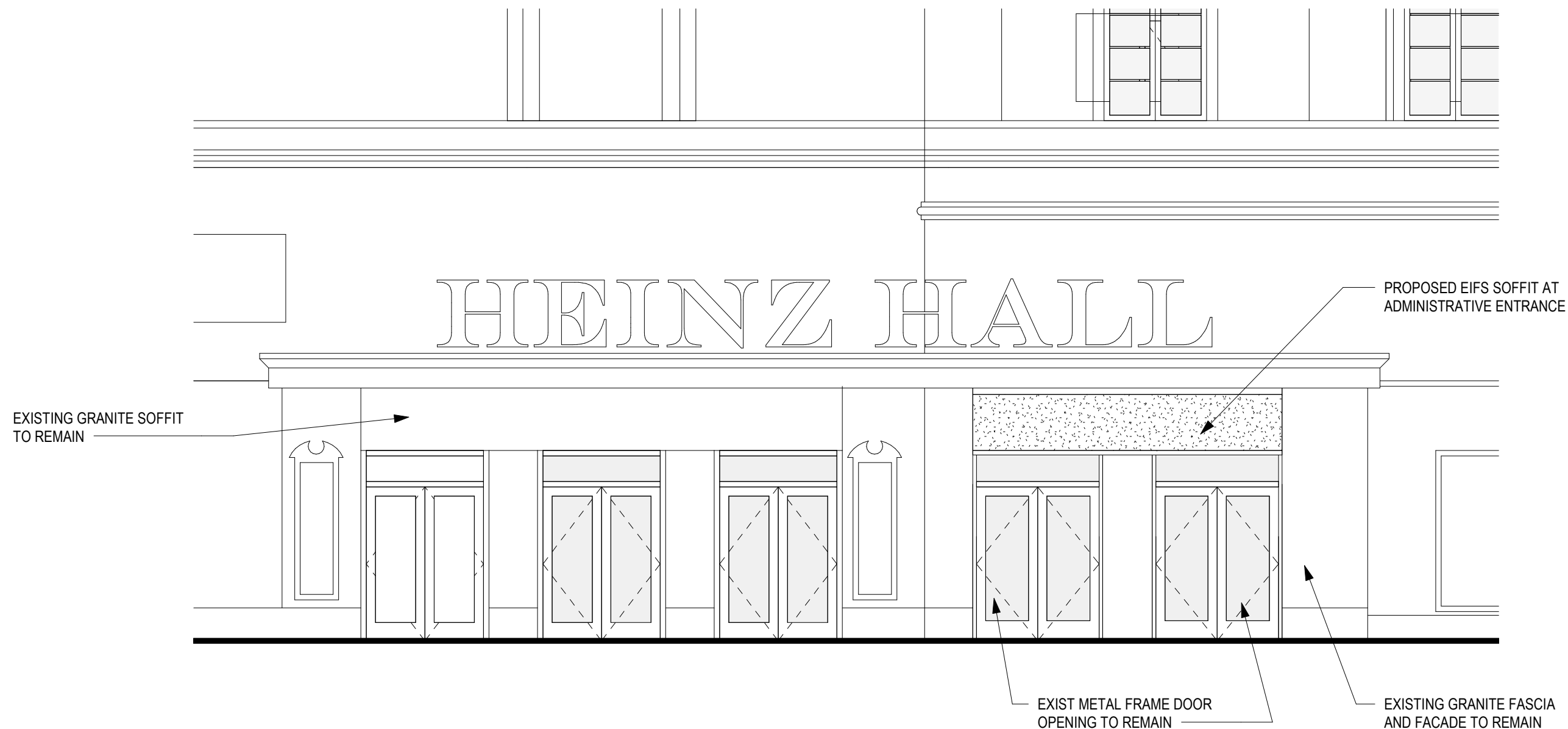
EXISTING ADMINISTRATIVE ENTRANCE





EXISTING ADMINISTRATIVE ENTRANCE





1 PENN AVENUE ADMINISTRATIVE ENTRANCE ELEVATION  
A6.04 Scale: 3/16" = 1'-0"

DEVELOPMENT ACTIVITIES MEETING

THE PITTSBURGH SYMPHONY

HEINZ HALL

SUMMER 2020 PROJECTS

© 2021 MacLachlan Cornelius & Filoni, Inc

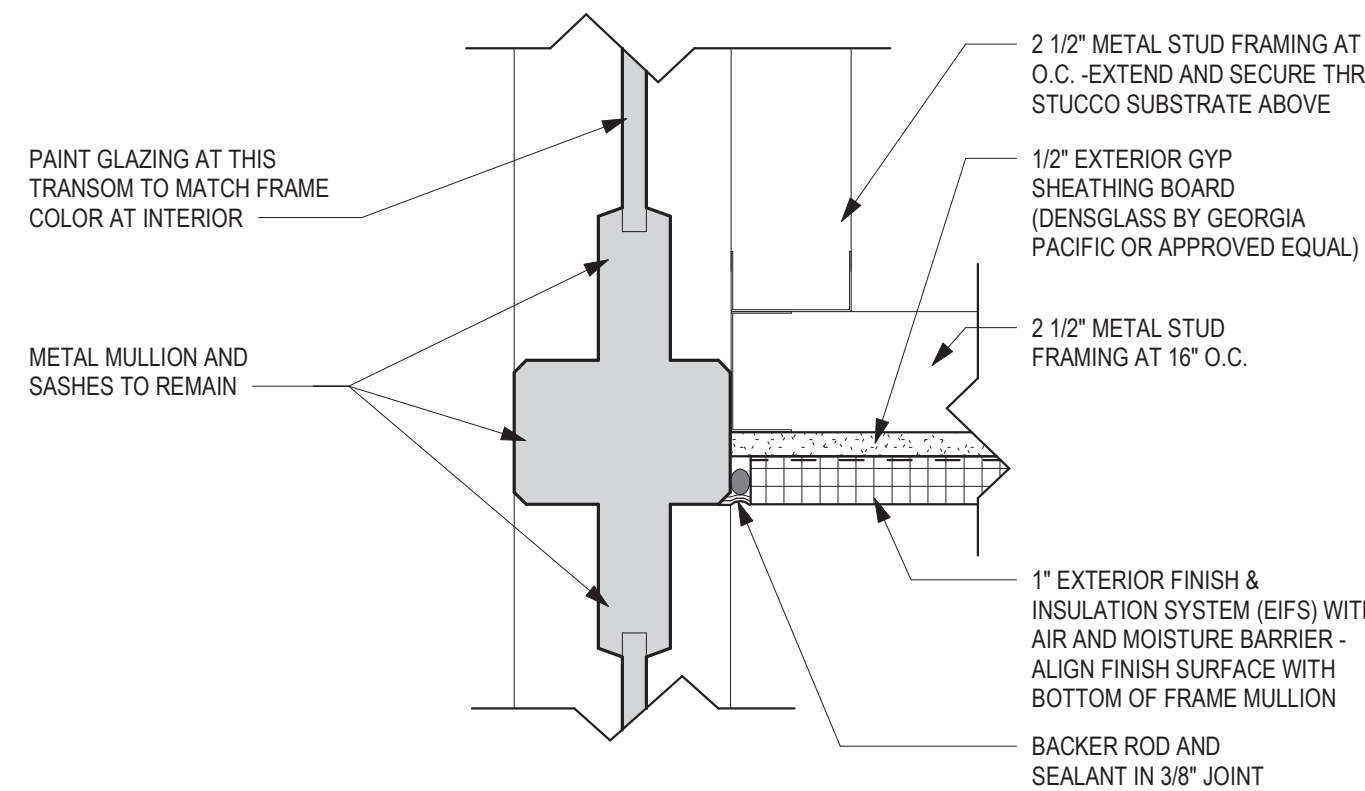
DATE: 04/30/21

CONTRACT NO. 36019049

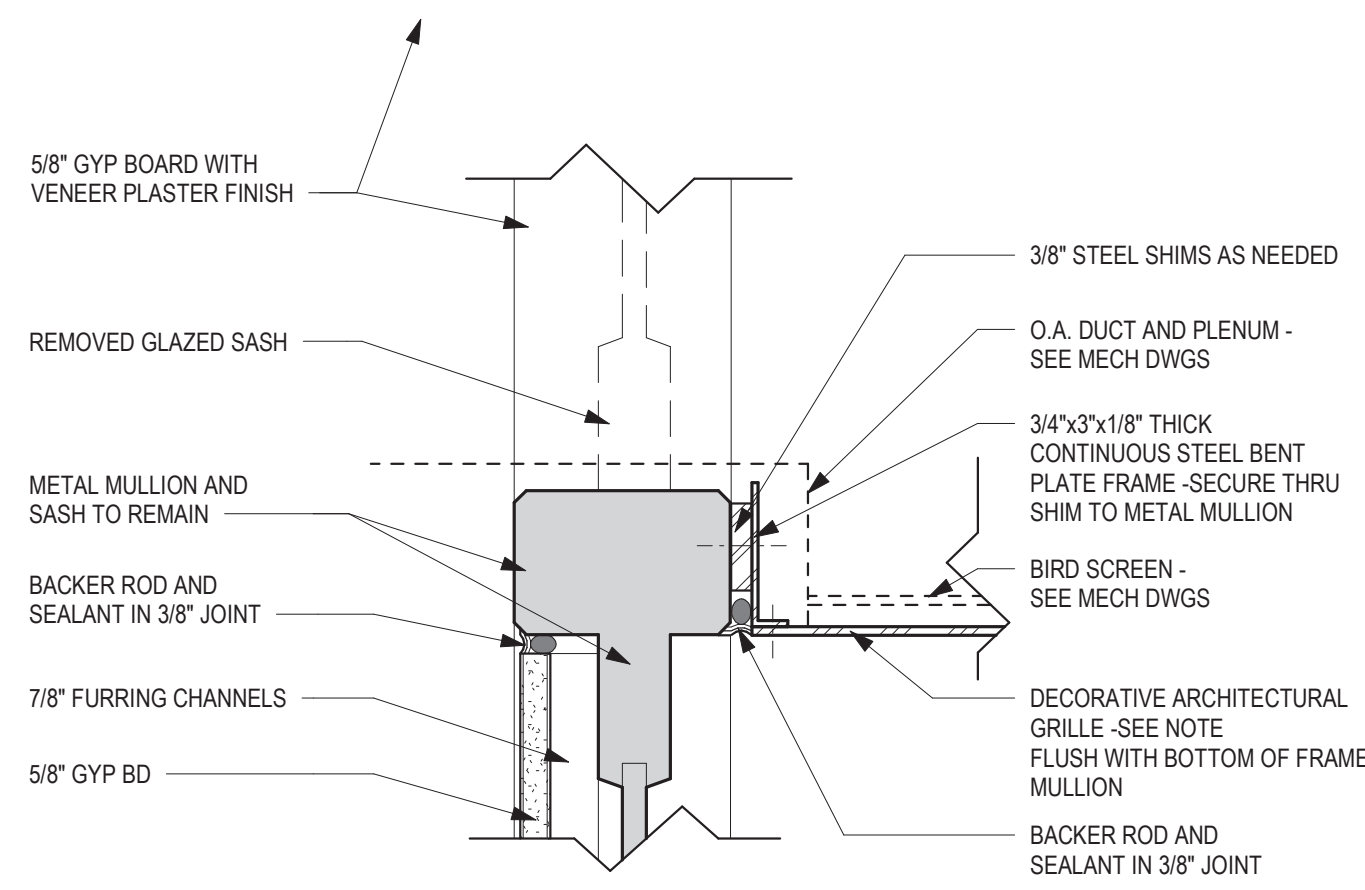
**MacLachlan  
Cornelius &  
Filoni**  
ARCHITECTS, INC.  
437 GRANT STREET, SUITE 1600  
PITTSBURGH, PENNSYLVANIA 15219

A6.04

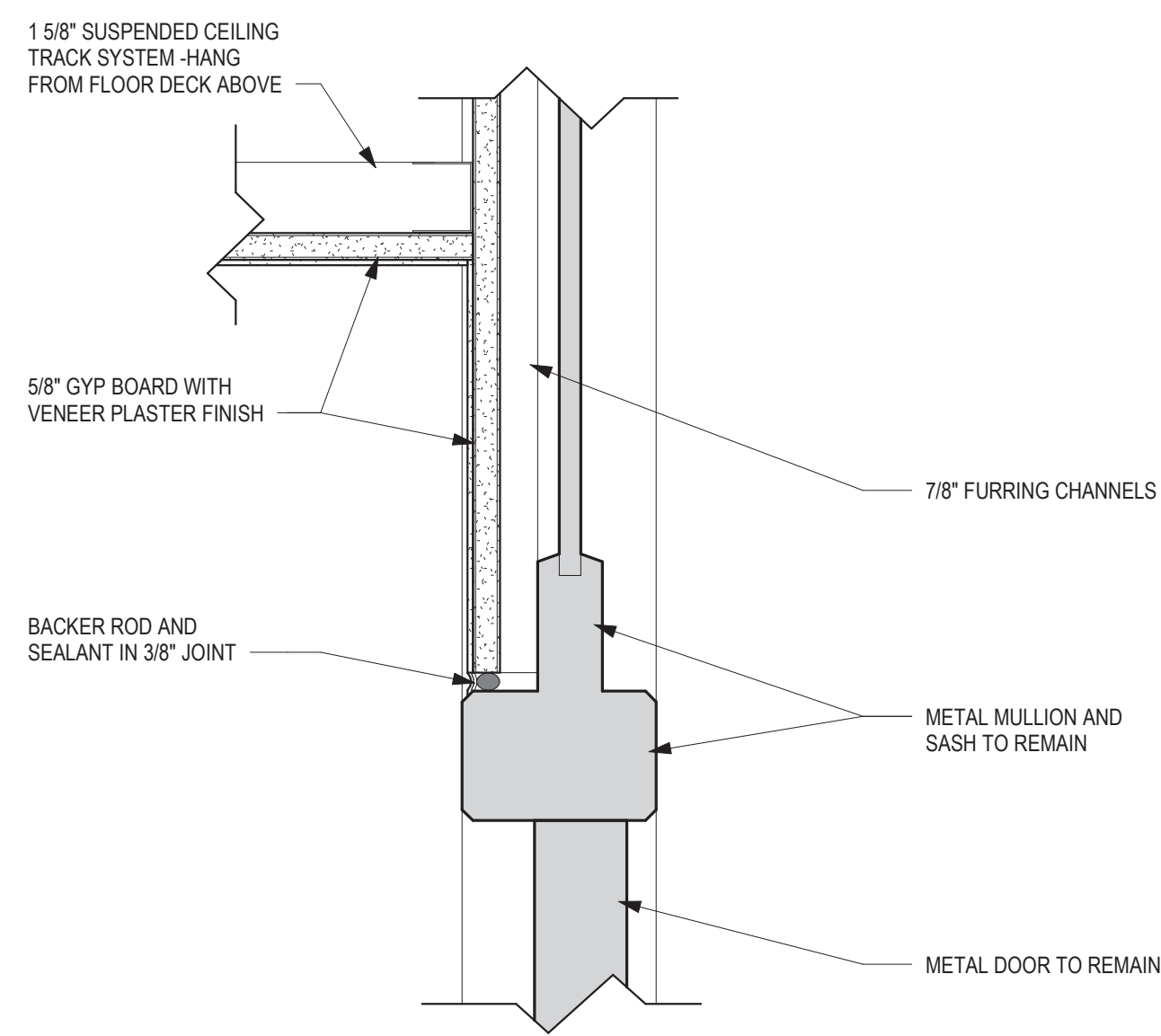




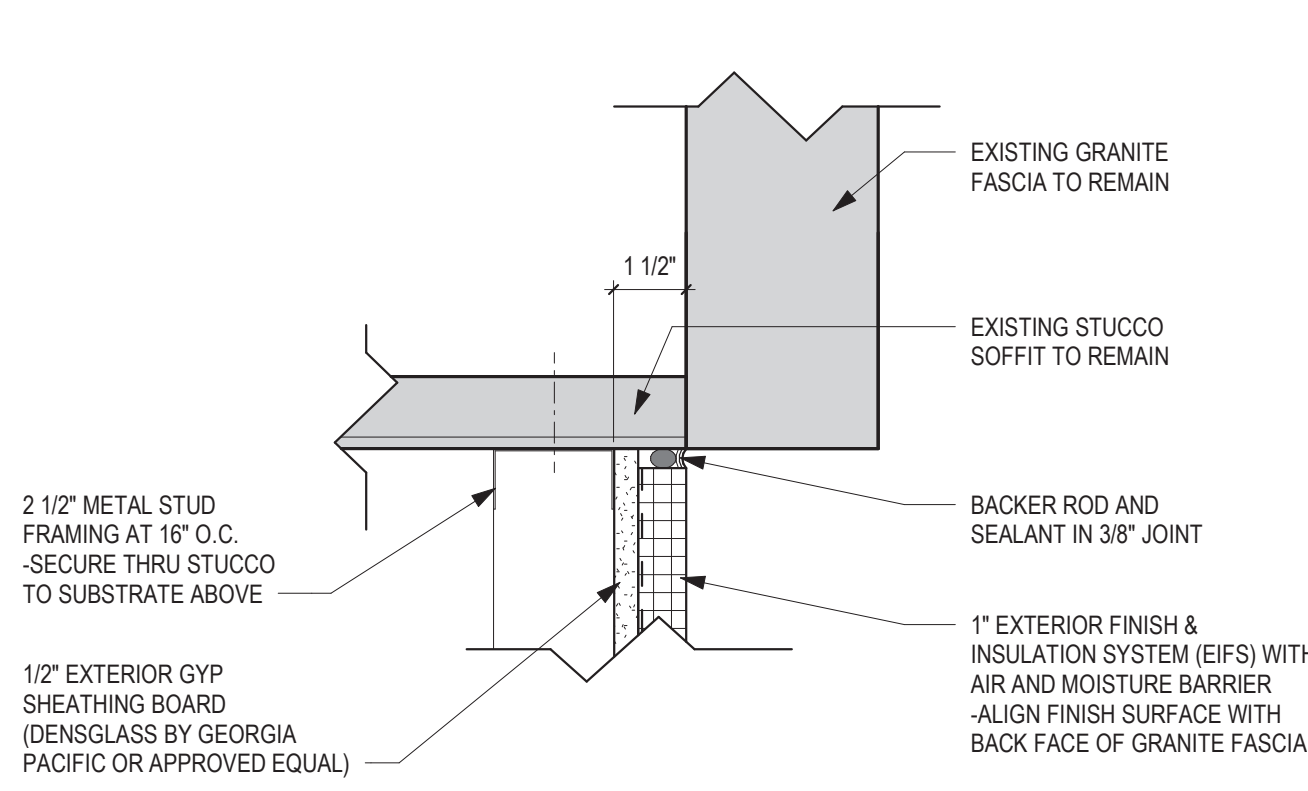
10 SECTION DETAIL 4  
A3.10 Scale: 3" = 1'-0"



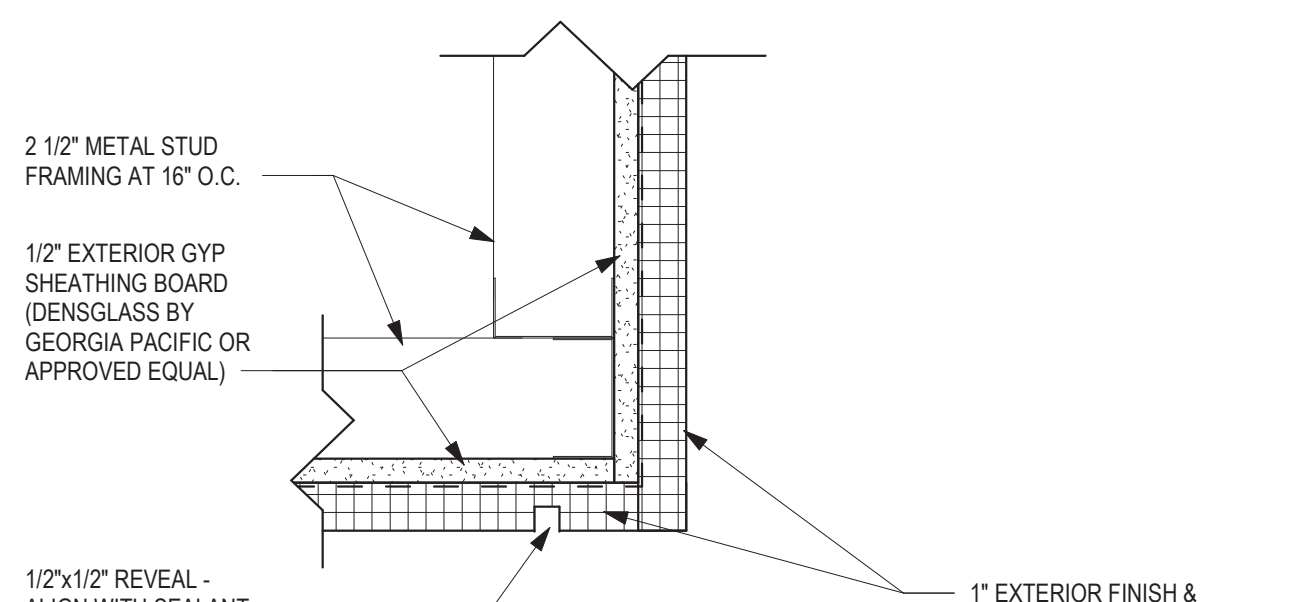
11 SECTION DETAIL 5  
A3.10 Scale: 3" = 1'-0"



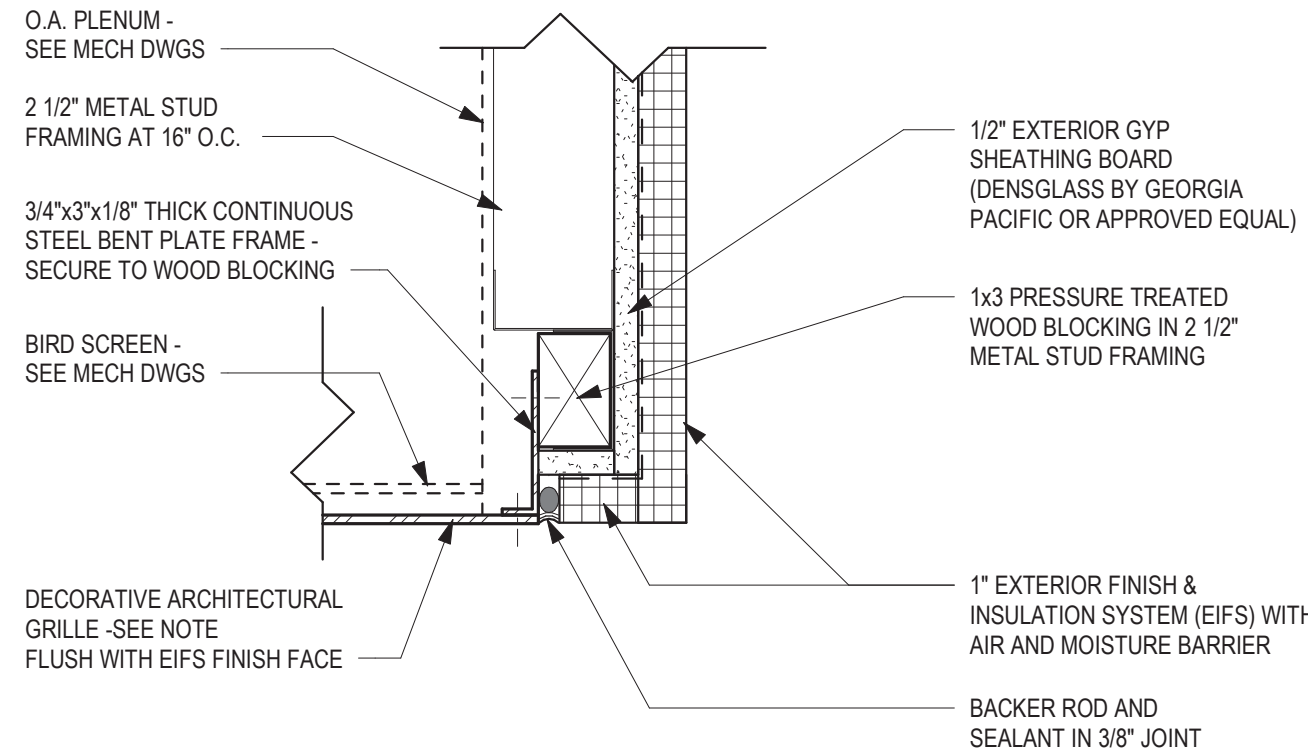
12 SECTION DETAIL 6  
A3.10 Scale: 3" = 1'-0"



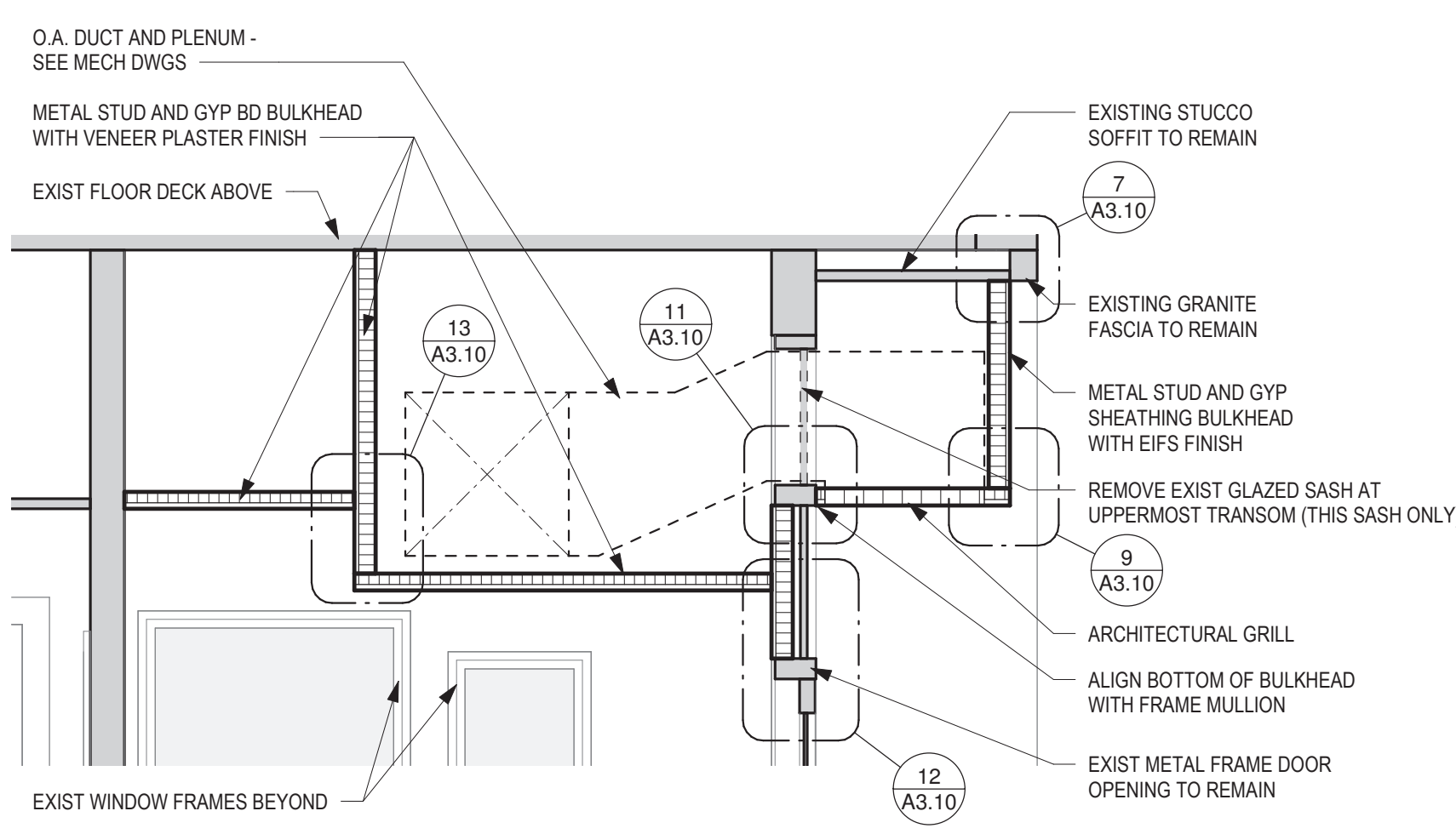
7 SECTION DETAIL 7  
A3.10 Scale: 3" = 1'-0"



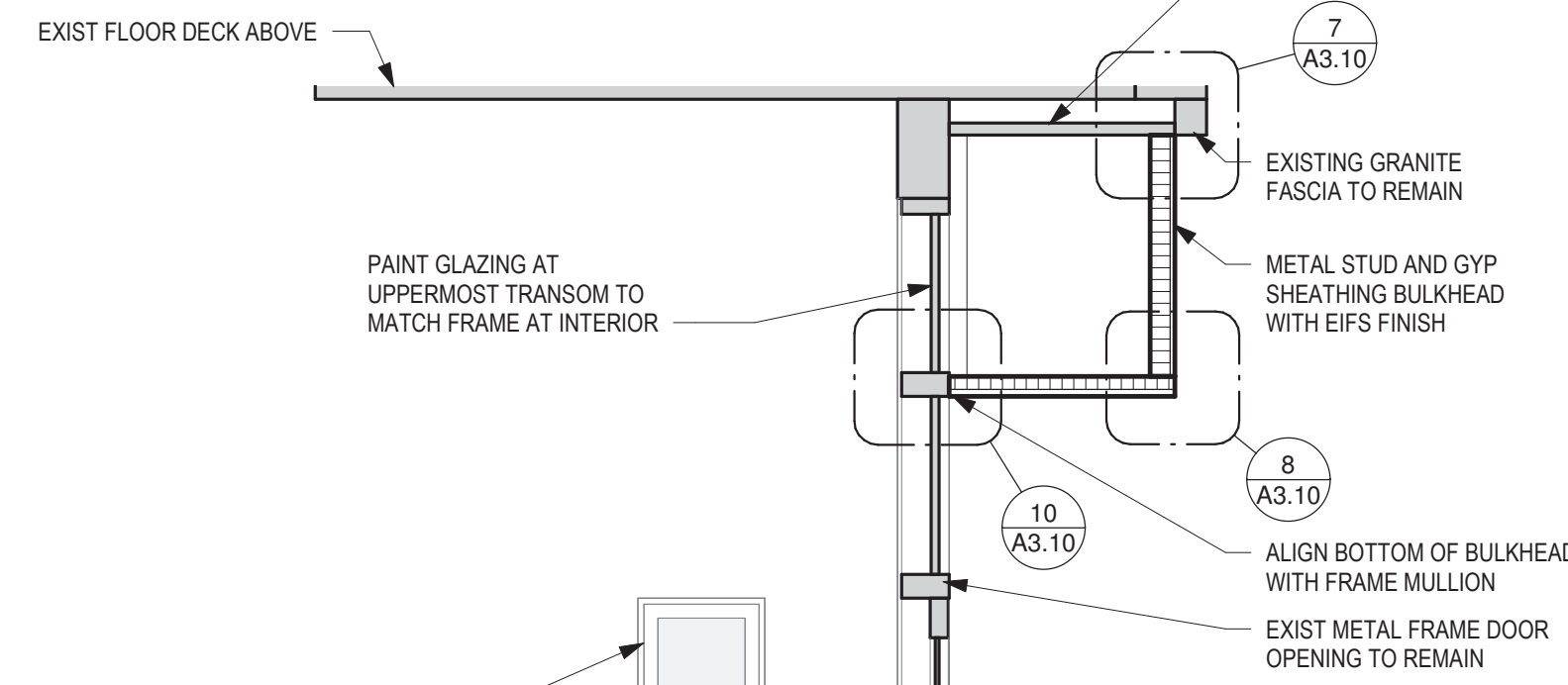
8 SECTION DETAIL 8  
A3.10 Scale: 3" = 1'-0"



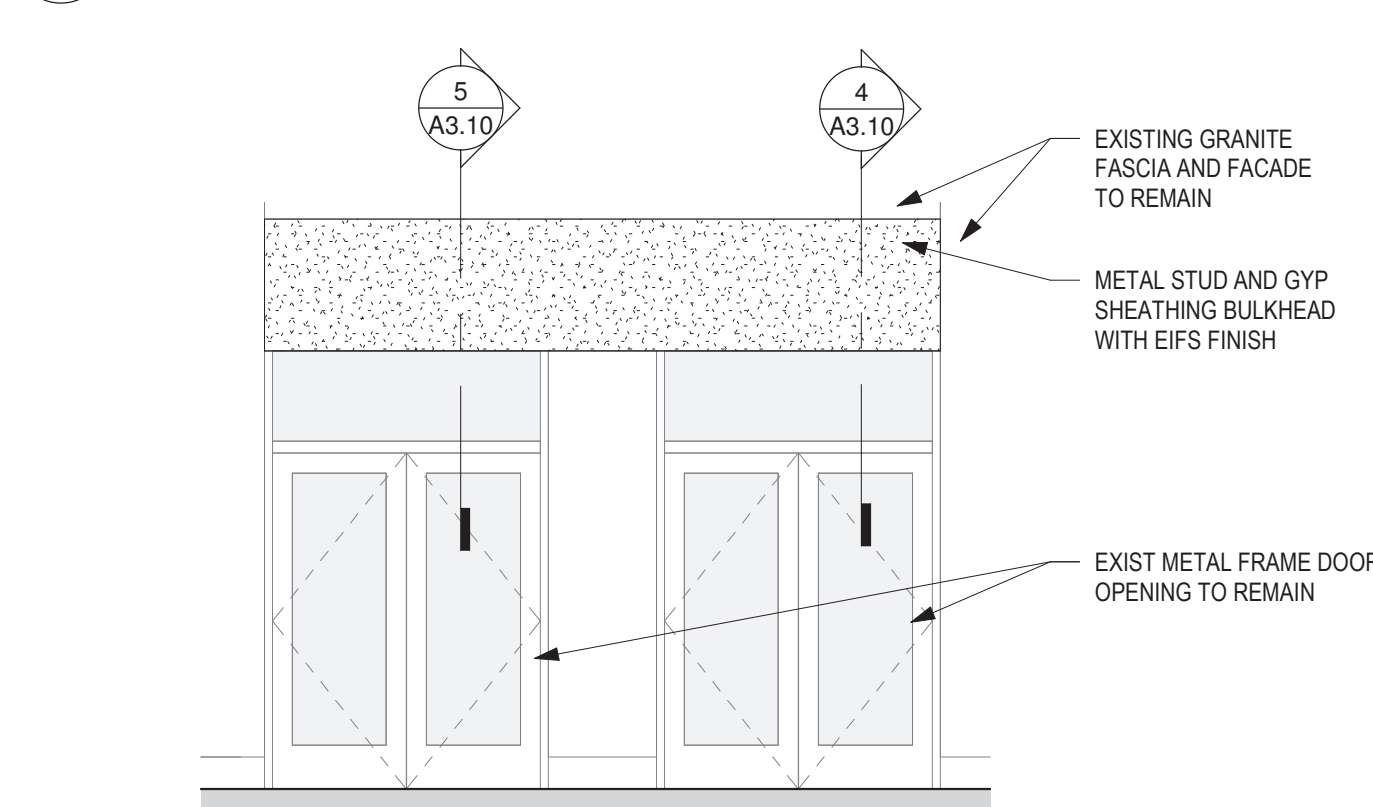
9 SECTION DETAIL 9  
A3.10 Scale: 3" = 1'-0"



4 WALL SECTION DETAIL  
A3.10 Scale: 1/2" = 1'-0"

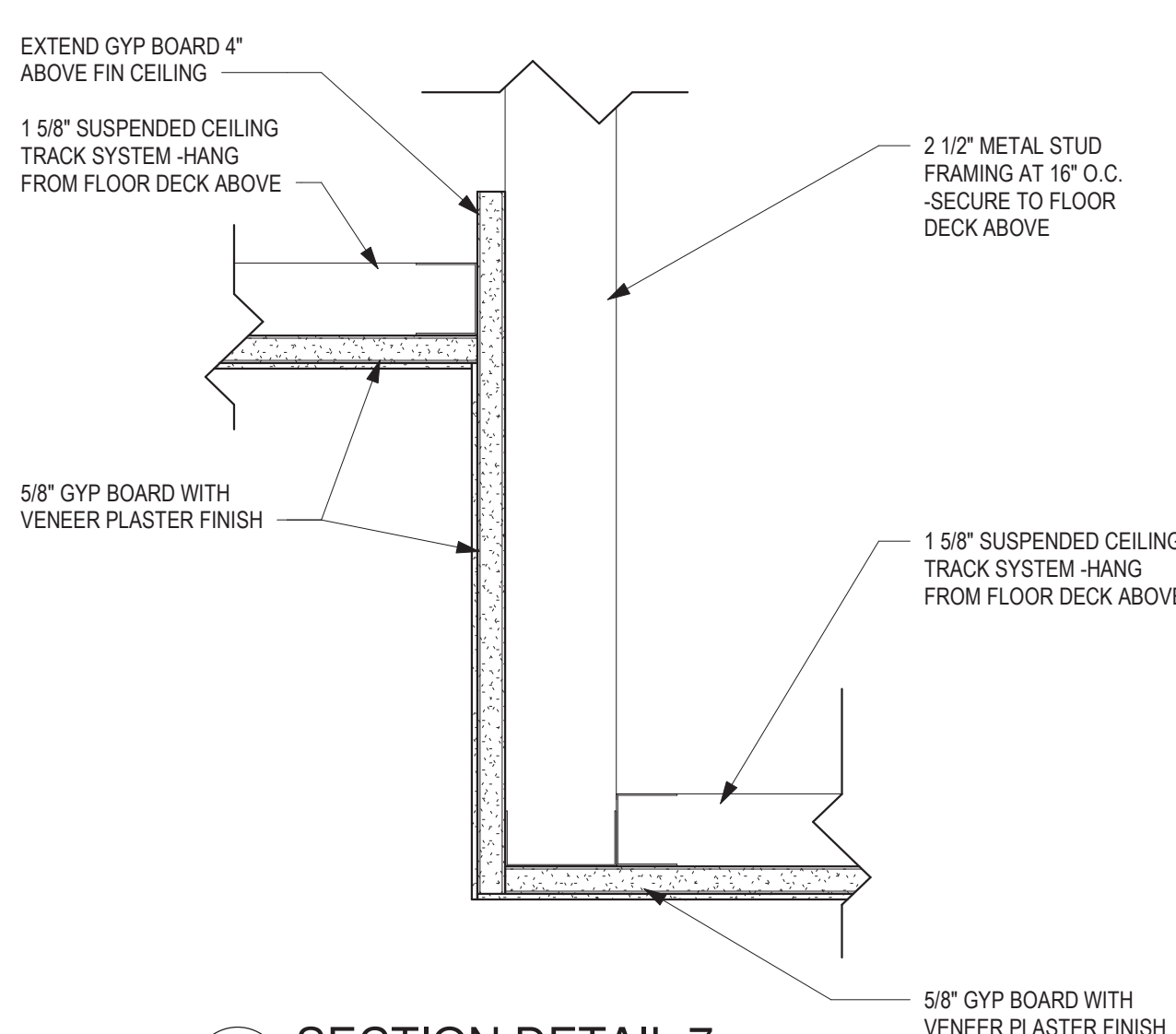


5 WALL SECTION DETAIL  
A3.10 Scale: 1/2" = 1'-0"

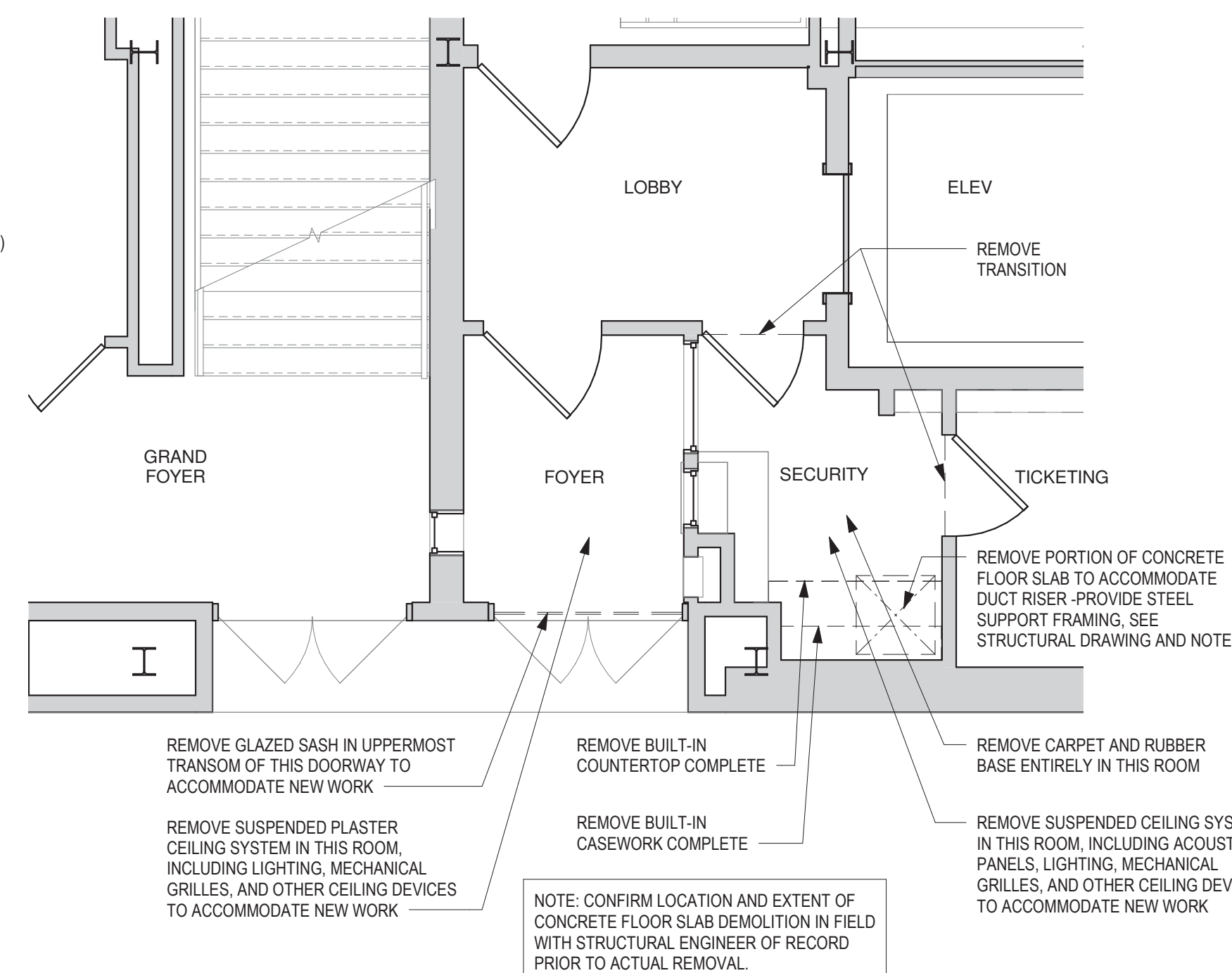


6 EXTERIOR ELEVATION  
A3.10 Scale: 1/4" = 1'-0"

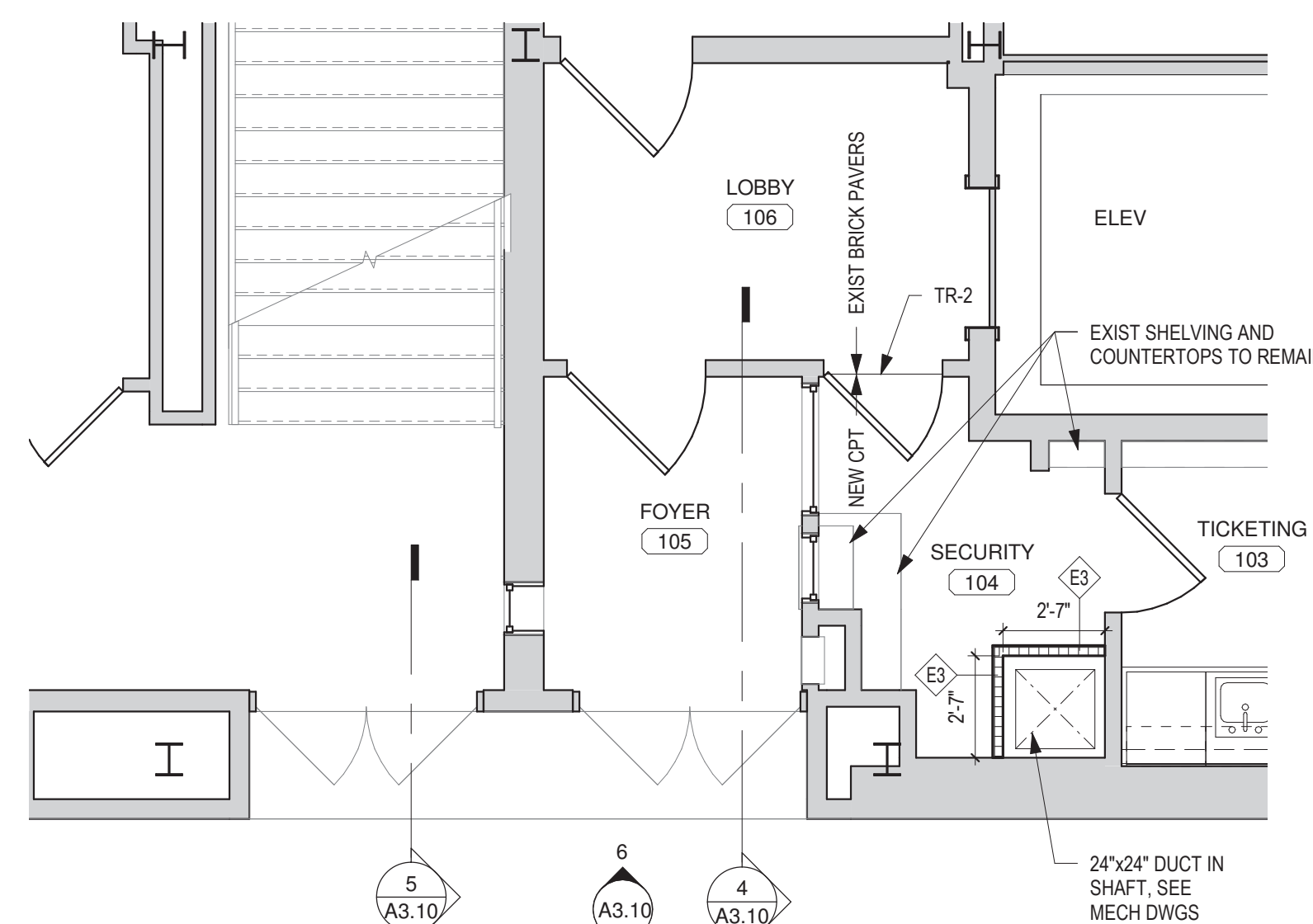
NOTE:  
METAL GRILLE TO BE: PERFORATED GRILLE "CLASSIC #220" BY ARCHITECTURAL GRILLE, BROOKLYN, NY (800-387-6267); 1 5/8" x 1 5/16" PATTERN, SIZED TO FIT O.A. PLENUM (COORD. WITH MECH DWGS); BORDER 1" ALL SIDES, MATERIAL 1/8" THICK ALUMINUM FINISH - BLACK ANODIZED; FASTENING METHOD #604 WITH SS FASTENERS AT 12" O.C. AROUND BORDER.



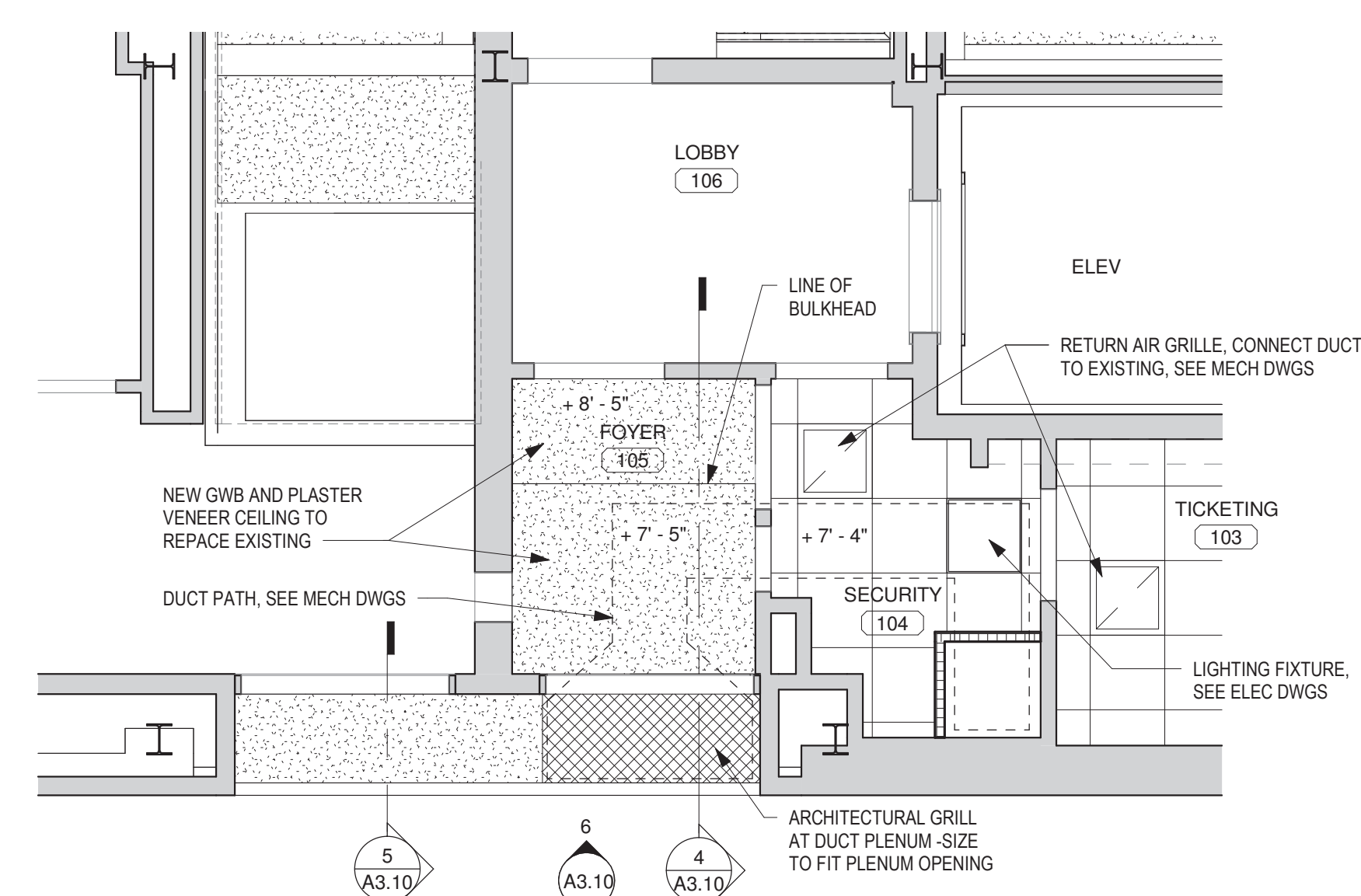
13 SECTION DETAIL 7  
A3.10 Scale: 3" = 1'-0"



1 FIRST FLOOR DEMOLITION PLAN - TOWER ENTRANCE  
A3.10 Scale: 1/4" = 1'-0"



2 PARTIAL FIRST FLOOR PLAN - TOWER ENTRANCE  
A3.10 Scale: 1/4" = 1'-0"



3 FIRST FLOOR RCP - TOWER ENTRANCE  
A3.10 Scale: 1/4" = 1'-0"

REVISION HISTORY		
NO.	DATE	DESCRIPTION
3	DEC. 22, 2020	RFP NO. 2

PERMIT SET

**MacLachlan Cornelius & Filoni**  
ARCHITECTS, INC.  
437 GRANT STREET, SUITE 1600  
PITTSBURGH, PENNSYLVANIA 15219

© 2021 MacLachlan Cornelius & Filoni, Inc.

**THE PITTSBURGH SYMPHONY**  
HEINZ HALL  
SUMMER 2020 PROJECTS

600 PENN AVENUE, PITTSBURGH, PENNSYLVANIA 15222  
CONTRACT NO. 36019049 DATE: FEB. 22, 2021

ENLARGED PLANS AND DETAILS - TOWER ENTRANCE

A3.10