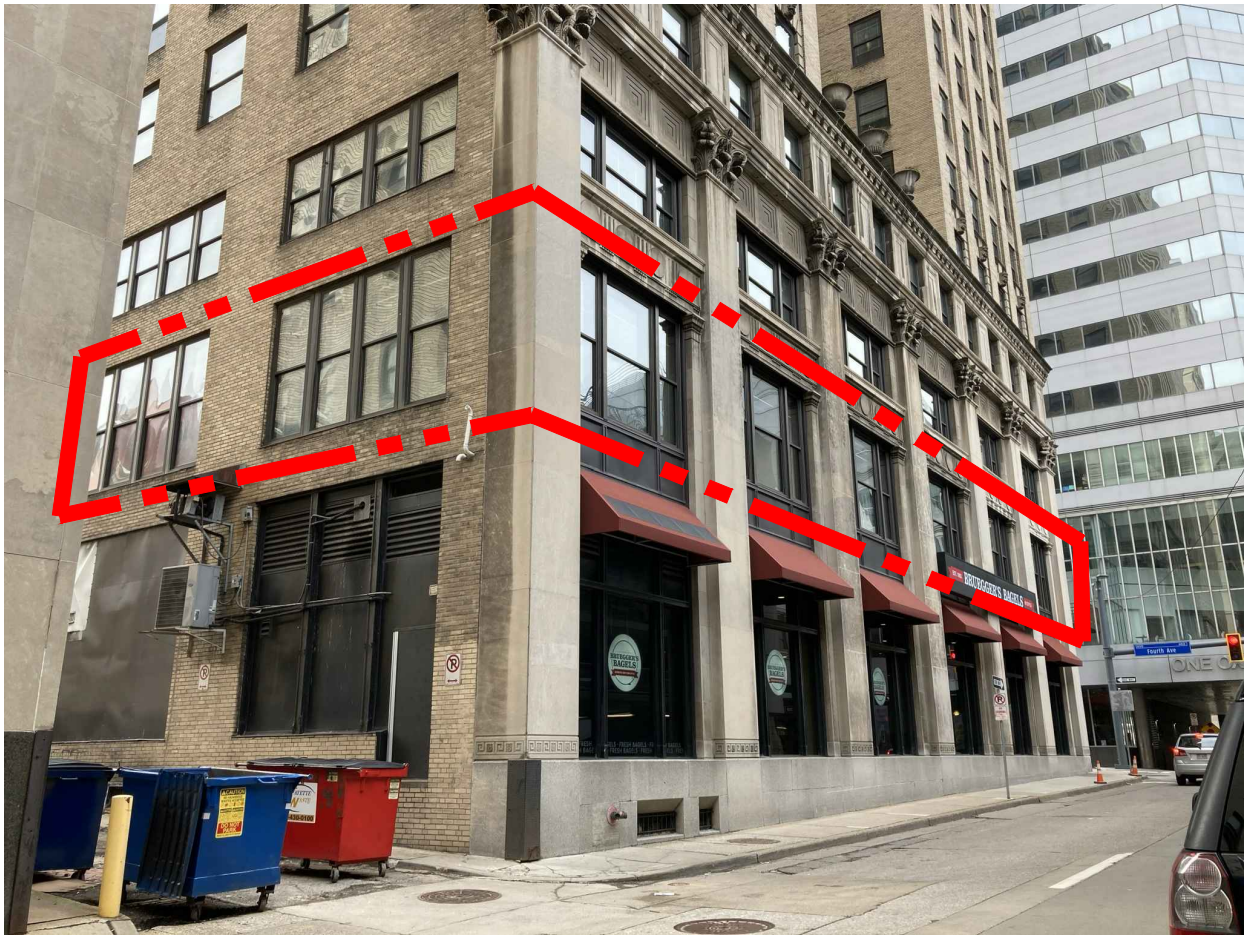




CORNER OF FOURTH AVENUE AND CHERRY WAY



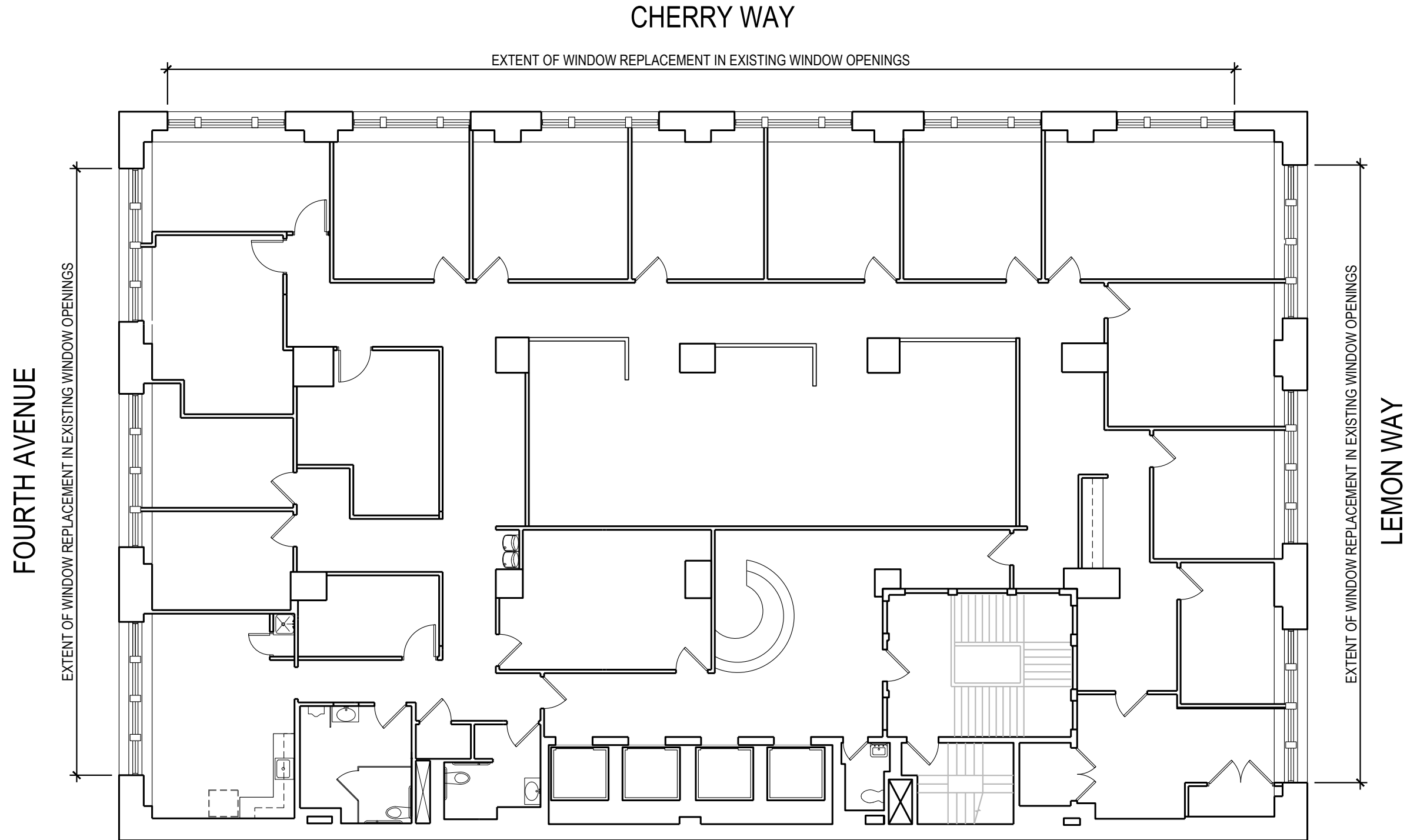
CHERRY WAY ELEVATION



CORNER OF CHERRY WAY AND LEMON WAY



FOURTH AVENUE ELEVATION



LEMON WAY ELEVATION



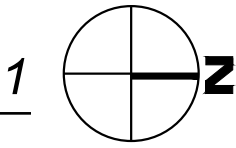
CORNER OF LEMON WAY AND ADJACENT PARKING LOT

**SECOND FLOOR PLAN**

NTS

EXTENT OF WINDOW REPLACEMENT IDENTIFIED ON PHOTOGRAPHS

COMPANY: QUAKER WINDOWS & DOORS  
FINISHES: EARTHTTONE  
SINGLE HUNG WINDOWS: T5000 SH  
FIXED WINDOWS: E500 FX



**SECOND FLOOR  
WINDOW  
REPLACEMENT**

**LAW & FINANCE  
BUILDING  
429 FOURTH AVENUE  
PITTSBURGH,  
PENNSYLVANIA 15219**

**FortyEightyArchitecture**

4 Smithfield Street Sixth Floor Pittsburgh PA 15222  
t 412 281 8300 f 412 281 8375 www.FortyEighty.com

Revisions		
△		
△		
△		
△		
△		
△		
△		
△		
△		

Scale	
	AS NOTED
Drawn By	
	40 80
Checked By	
	40 80
Project No.	
	21-002
Date	
	MARCH 1, 2021
Drawing Title	

**WINDOW  
REPLACEMENT  
LOCATION MAP  
AND EXISTING  
ELEVATIONS**

Drawing No.