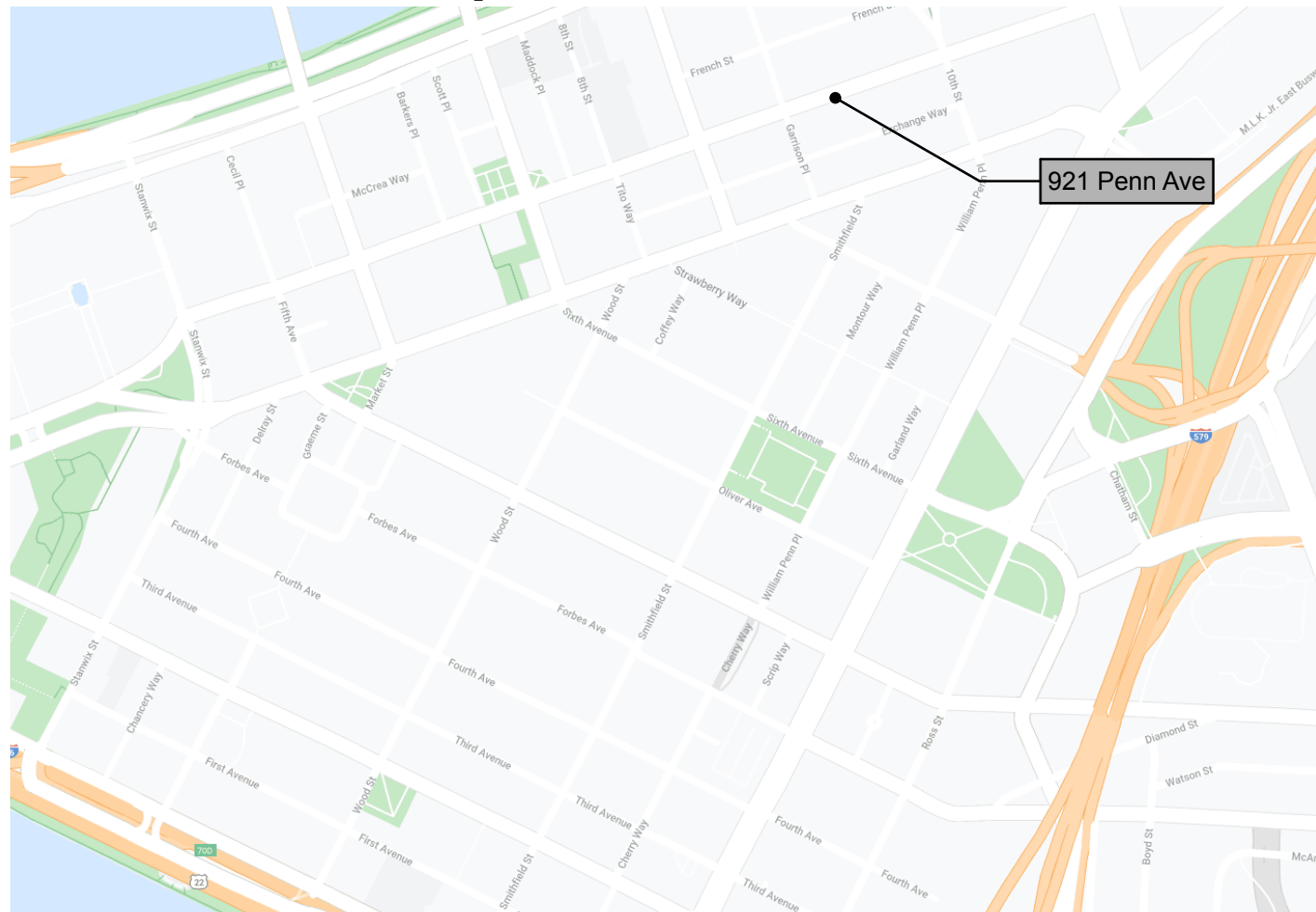


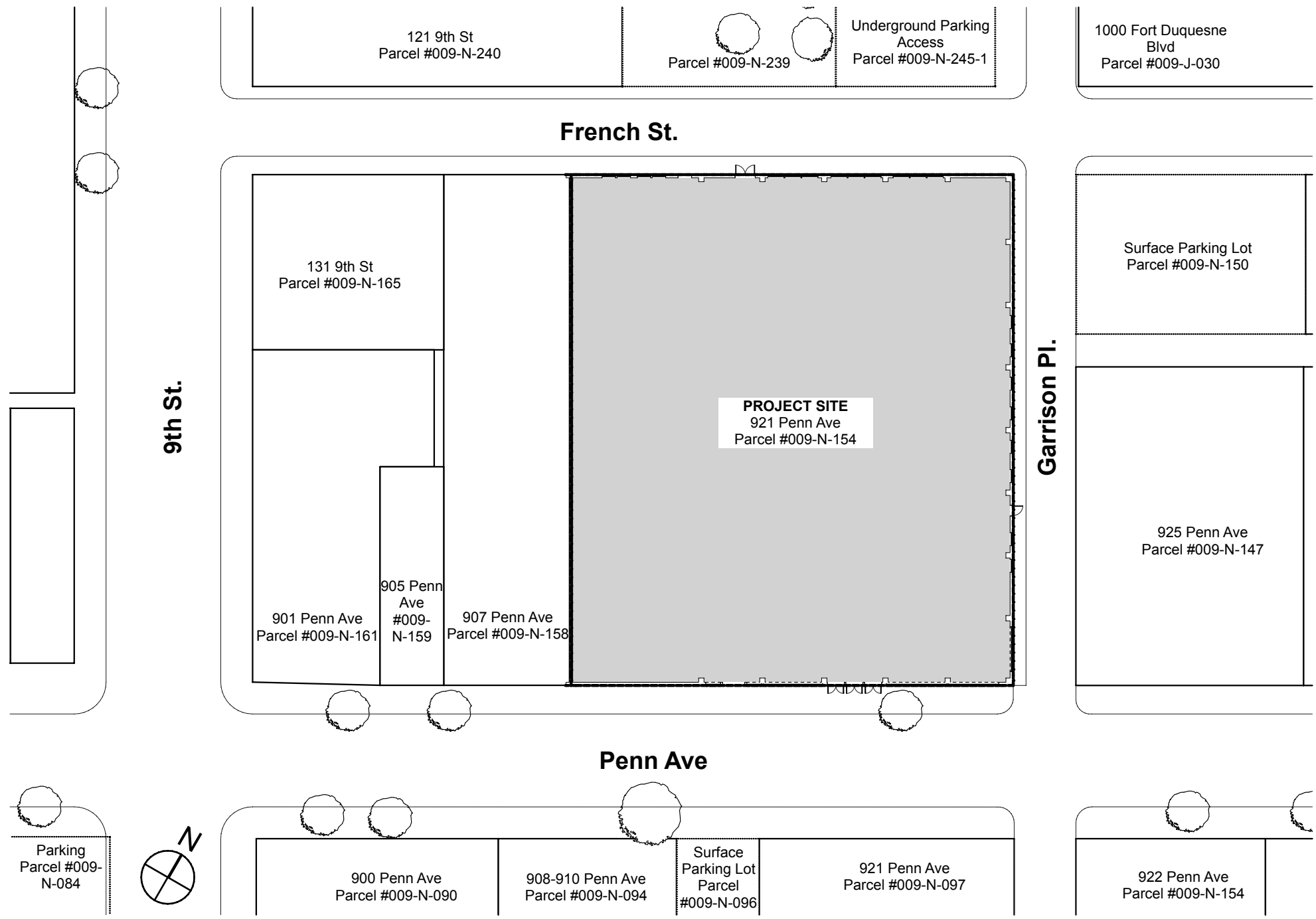
Penn Garrison Renovation

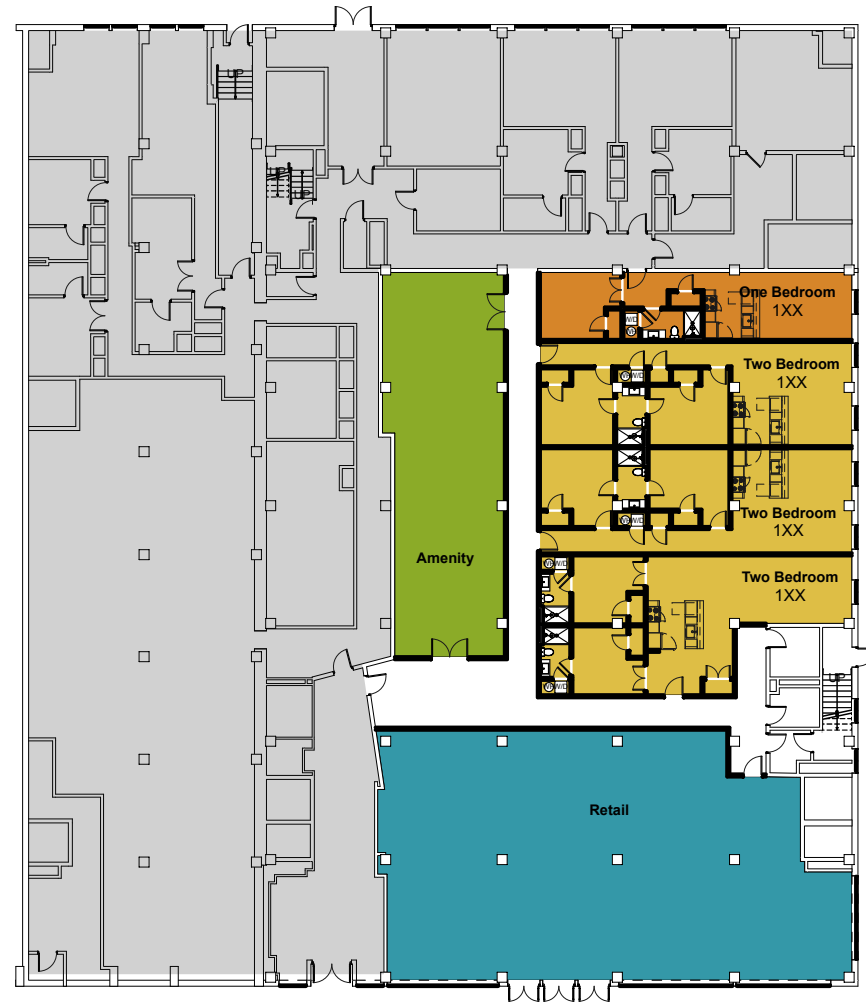
921 Penn Avenue, Pittsburgh, PA 15222

Zoning District GT-C

Addition of 17 apartments on the 1st and 2nd Floor







1 **Ground Floor**
 SCALE: 1/32" = 1'-0"
 0 16' 32' 64'



2 **Second Floor**
 SCALE: 1/32" = 1'-0"
 0 16' 32' 64'

UNIT COUNTS	
NAME	QTY
One Bedroom	7
Studio	1
Two Bedroom	9

- Studio
- One Bedroom
- Two Bedroom
- Amenities
- Retail

Sustainability Summary

- All plumbing fixtures are water conserving low-flow fixtures
- All light fixtures are LED
- The mechanical system consists of high-efficiency water source heat pump units.

Accessibility

- The building is fully accessible.
- No new accessible units are required due to existing building counts.

Construction Management Plan

- **No street closures are planned.**
- **All loading through the existing alley way.**
- **Debris will be placed in a dumpster.**
- **Construction duration expected to be 6 months.**