





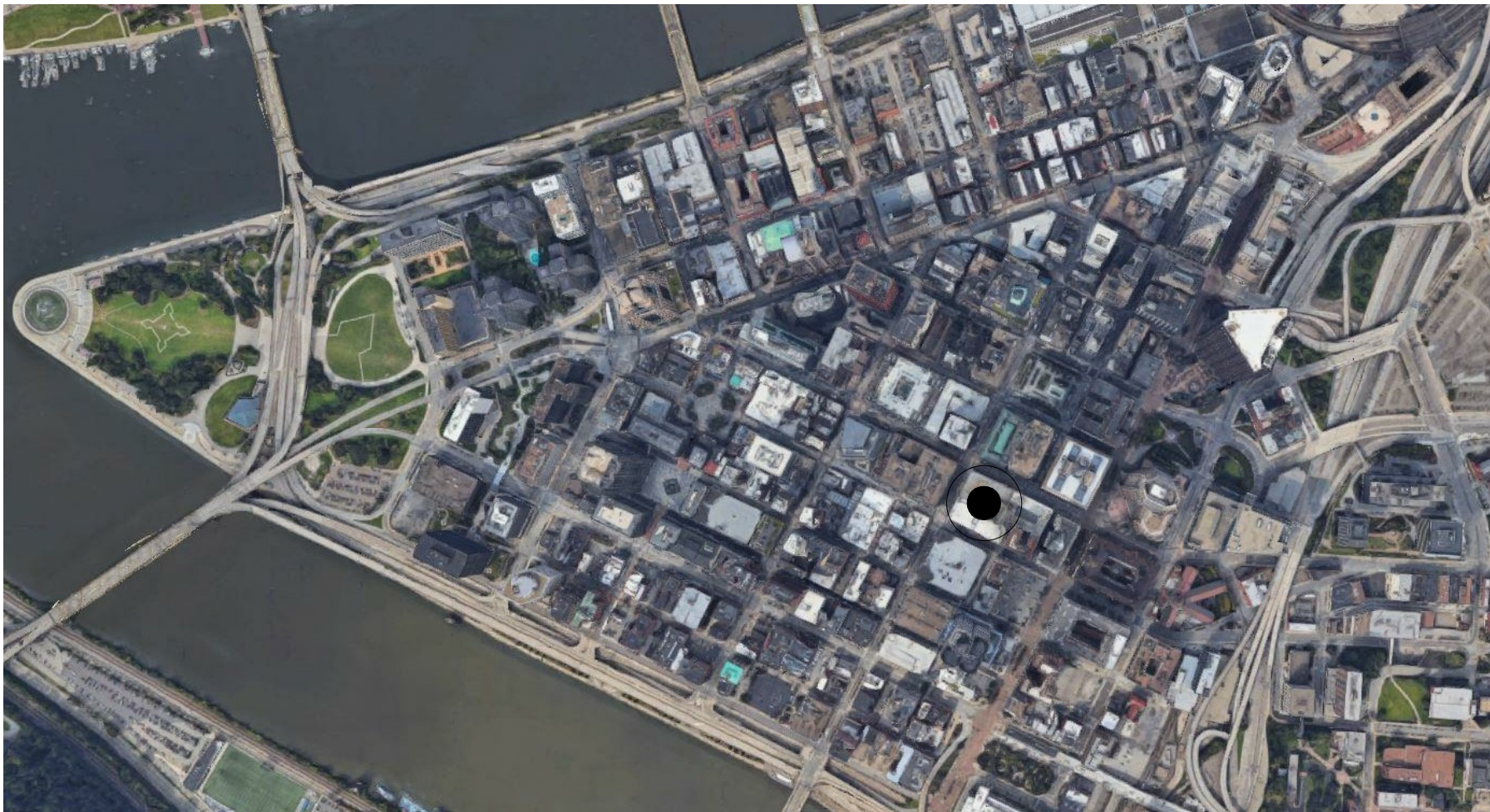
Project Overview:

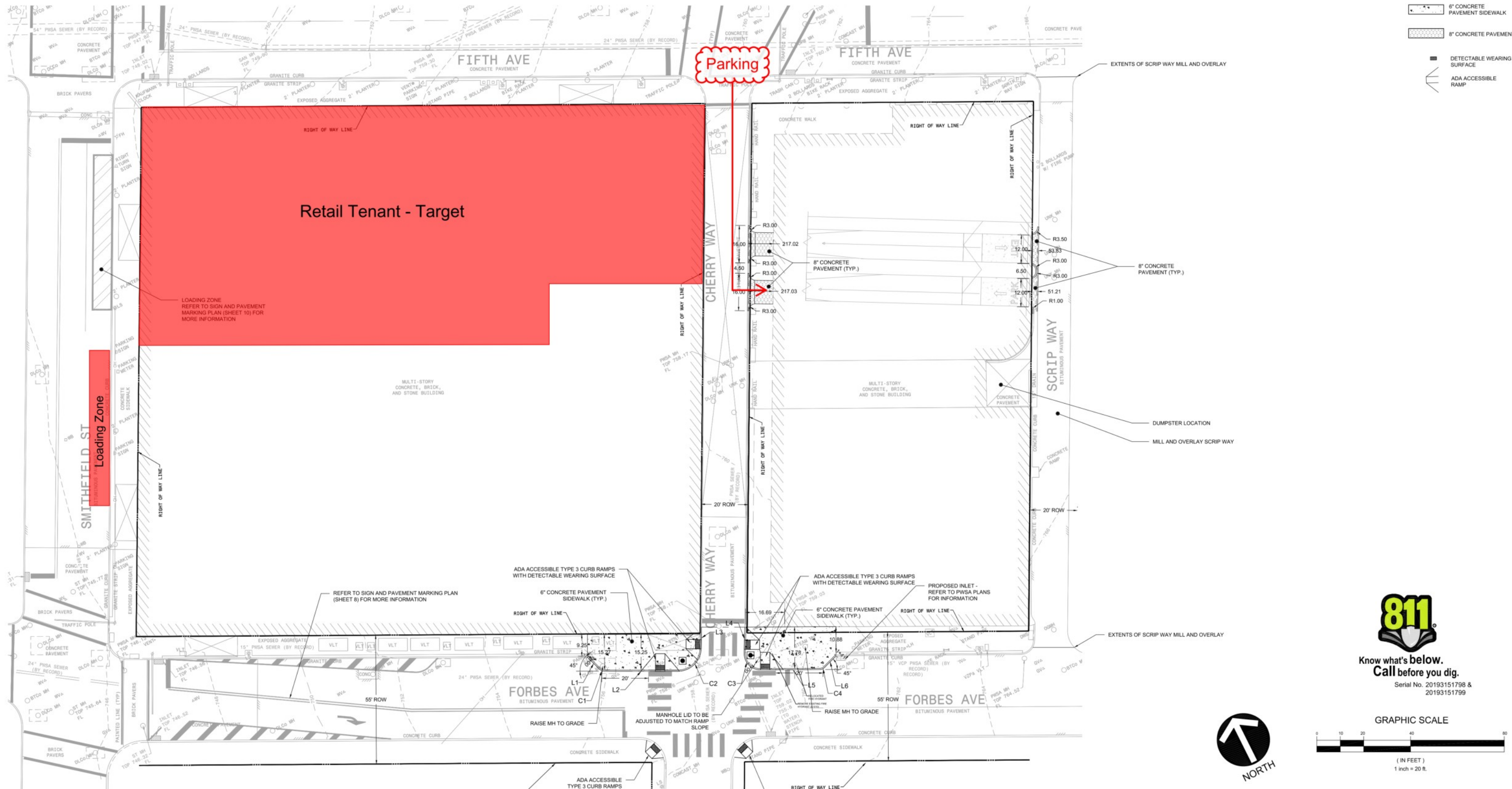
Address: 482 Smithfield St, Pittsburgh, PA 15219

Zoning District: GT-A

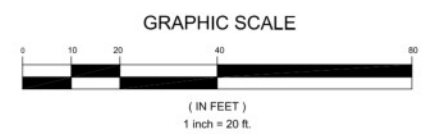
Area: 20,034 SF

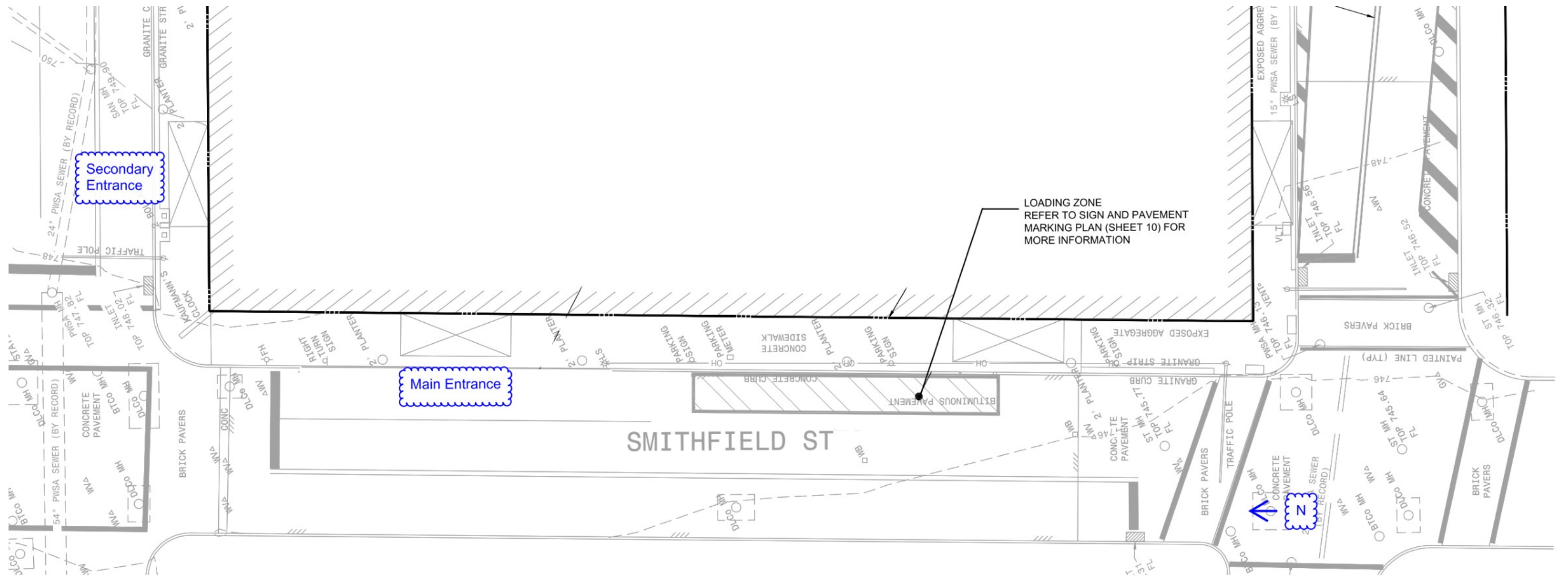
This project is for the Landlord Shell of the Target Retail space that will occupy the northern half of the first floor of the building. The primary entrance will be on Smithfield Street with a secondary entrance on Fifth Avenue (both are existing). Loading will occur on Smithfield Street. Separate from this project, but included for context is the proposed signage package associated with Target.

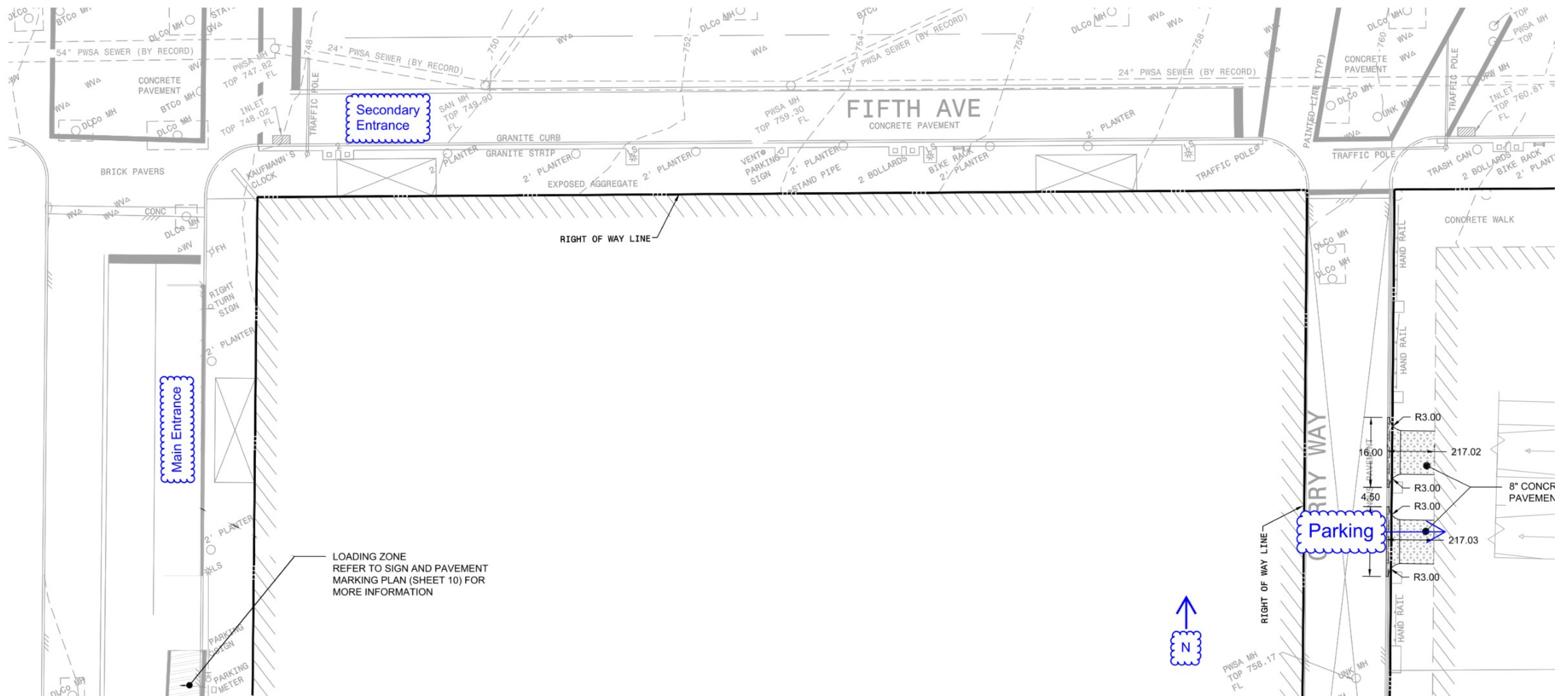




Know what's below.
Call before you dig.
Serial No. 20193151798 &
20193151799





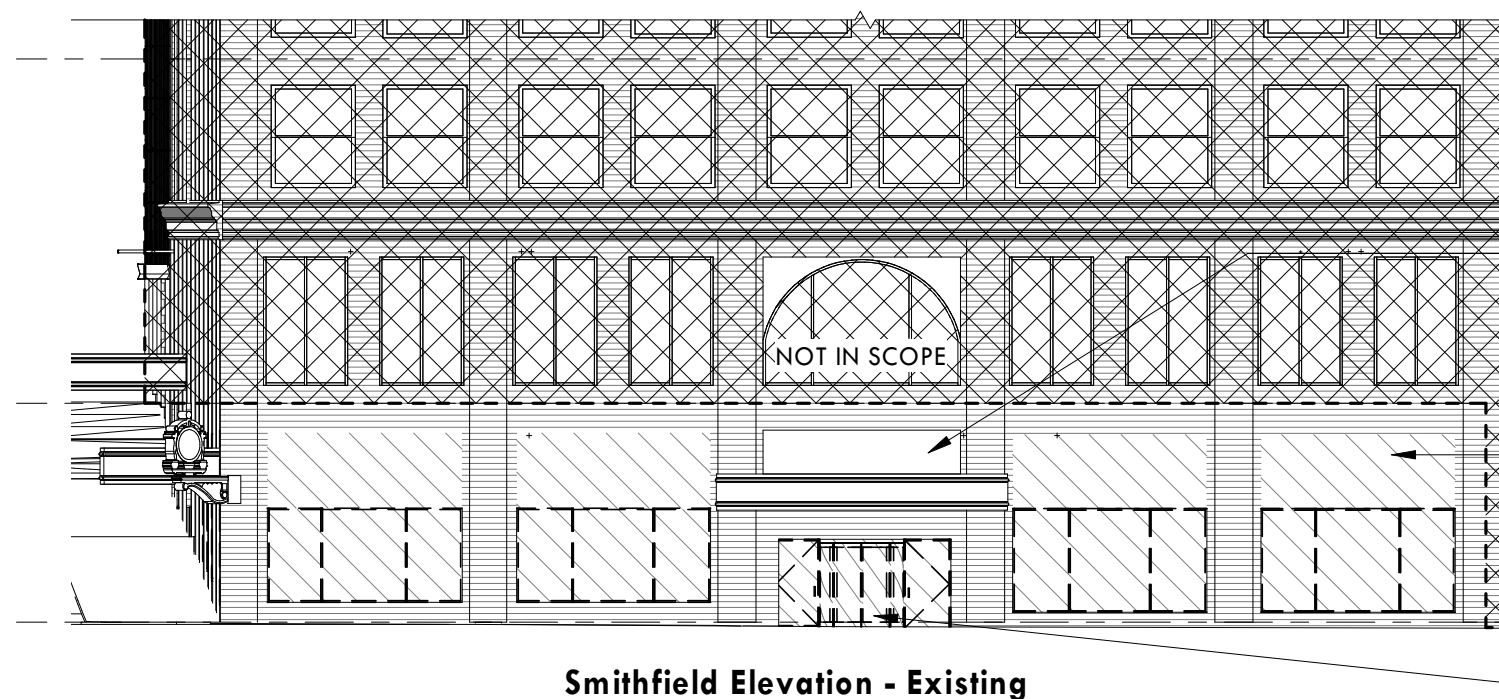




Smithfield St
Pittsburgh, Pennsylvania
Google
Street View



Existing



Smithfield Elevation - Existing

(795.14') Fourth Floor M
795' - 1 11/16"

Existing Decorative Grillwork to Remain. GC to Provide Protection for Duration of Construction.

(766.50') Second Floor M
766' - 6"

Existing Infill Panels Above Existing Window Frames to be Removed.

(748.27') First Floor M
748' - 3 1/4"

Existing revolving door and exterior man doors to be removed. GC to provide temporary wall to maintain building security.

Historic Inspiration



Proposed



Smithfield Elevation - Proposed

(795.14') Fourth Floor M
795' - 1 11/16"

White internally illuminated main entry sign stand up mounted @ canopy entry.

(766.50') Second Floor M
766' - 6"

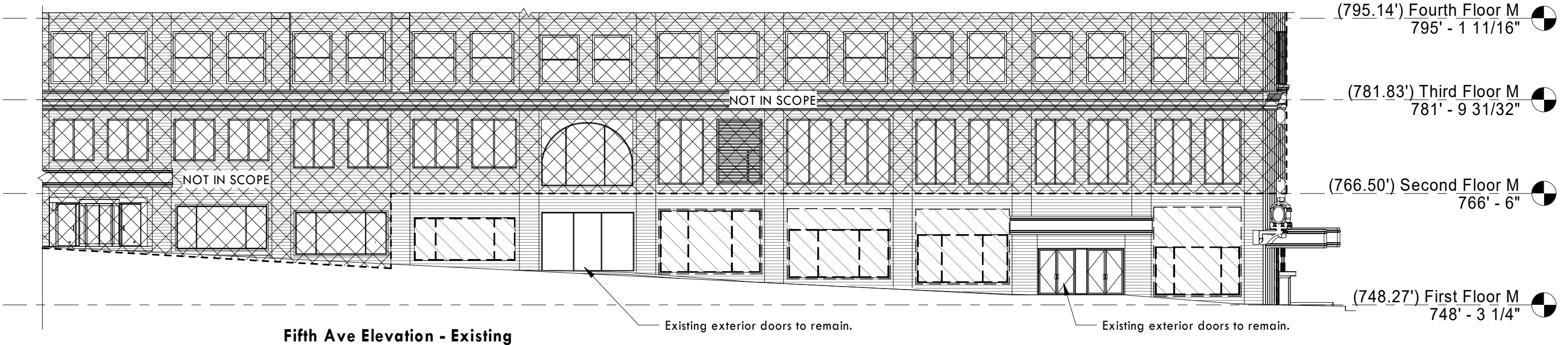
"order pickup" sign as white vinyl on glass.

(748.27') First Floor M
748' - 3 1/4"

Proposed Design

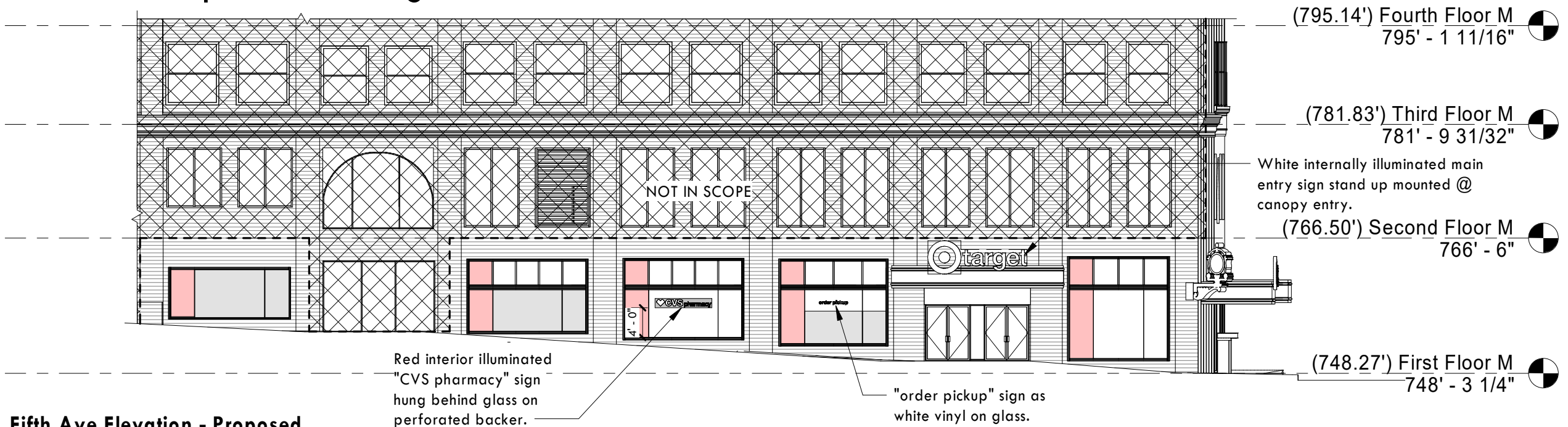


Existing

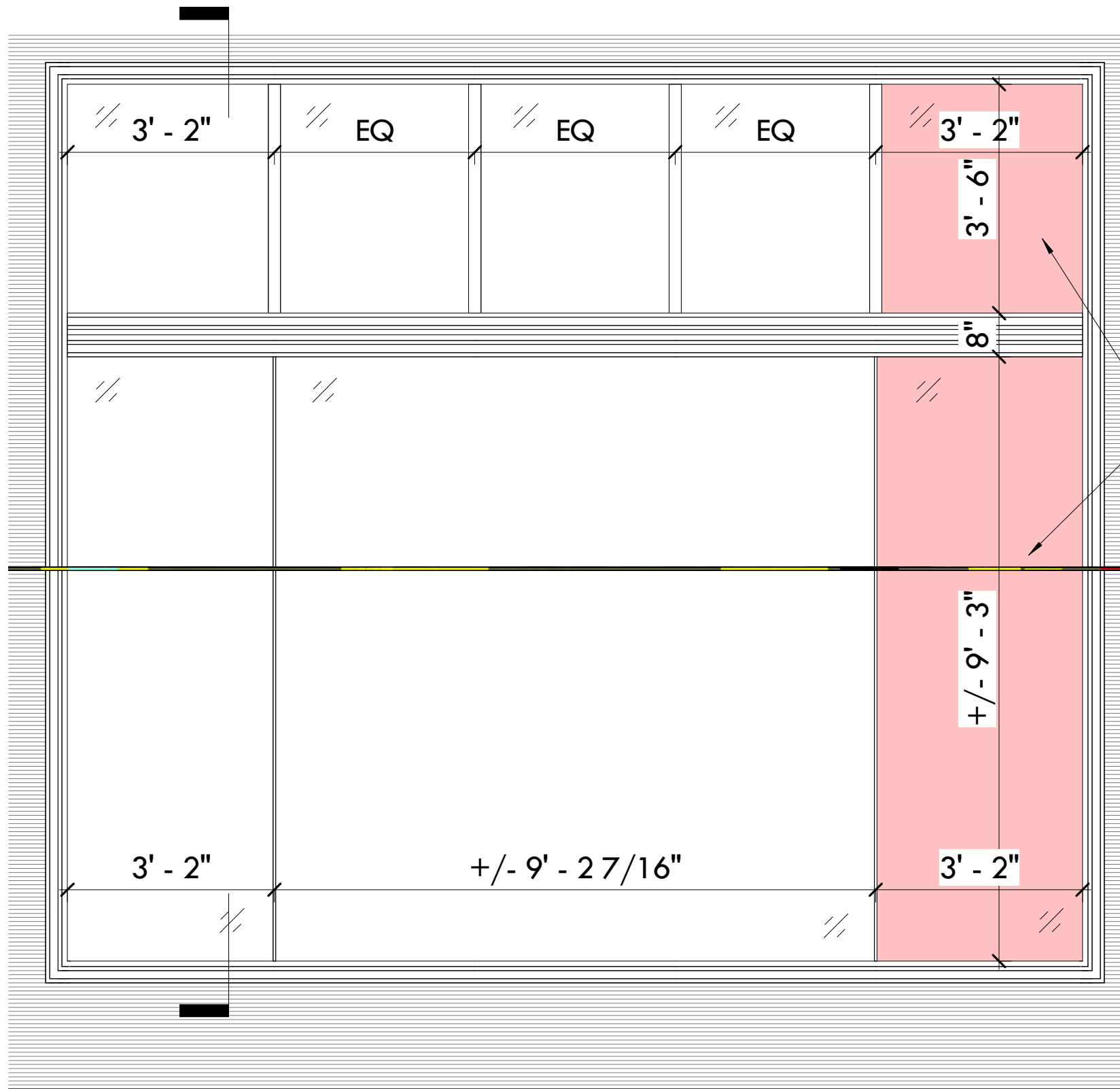


Fifth Ave Elevation - Existing

Proposed Design



Fifth Ave Elevation - Proposed



Recreate Existing Window Profiles

Translucent Film by Tenant

EXTERIOR

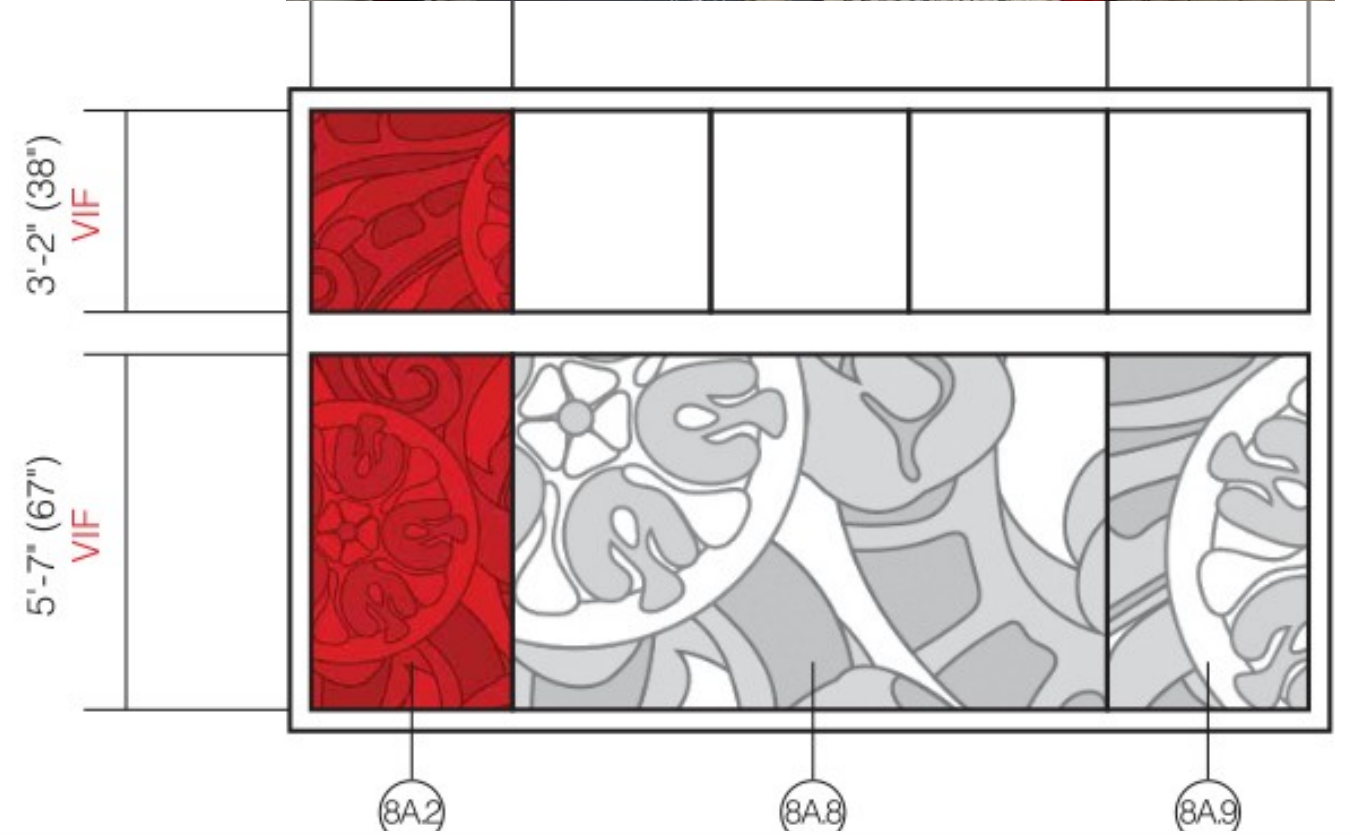
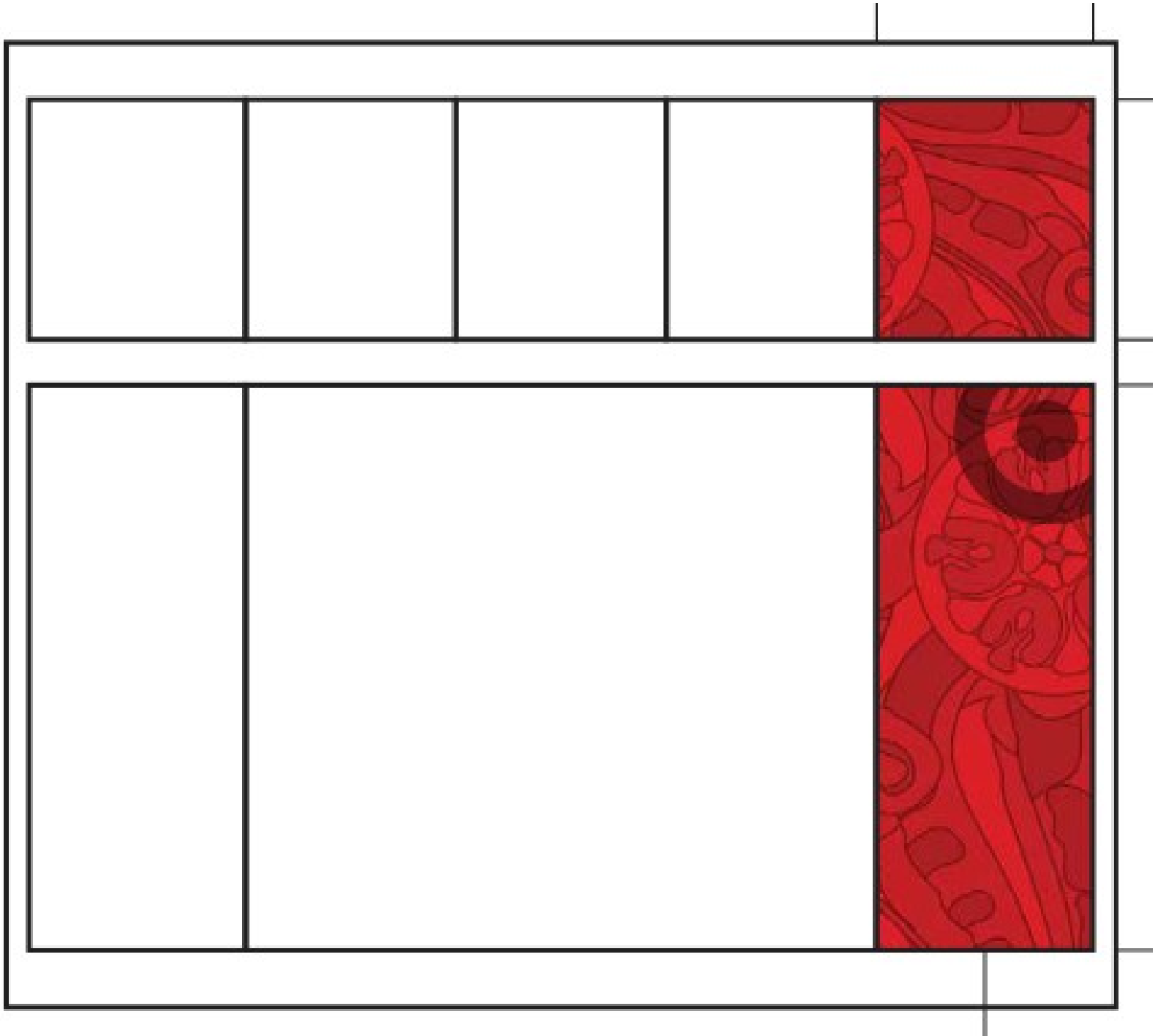
INTERIOR

Aluminum Storefront System in Black

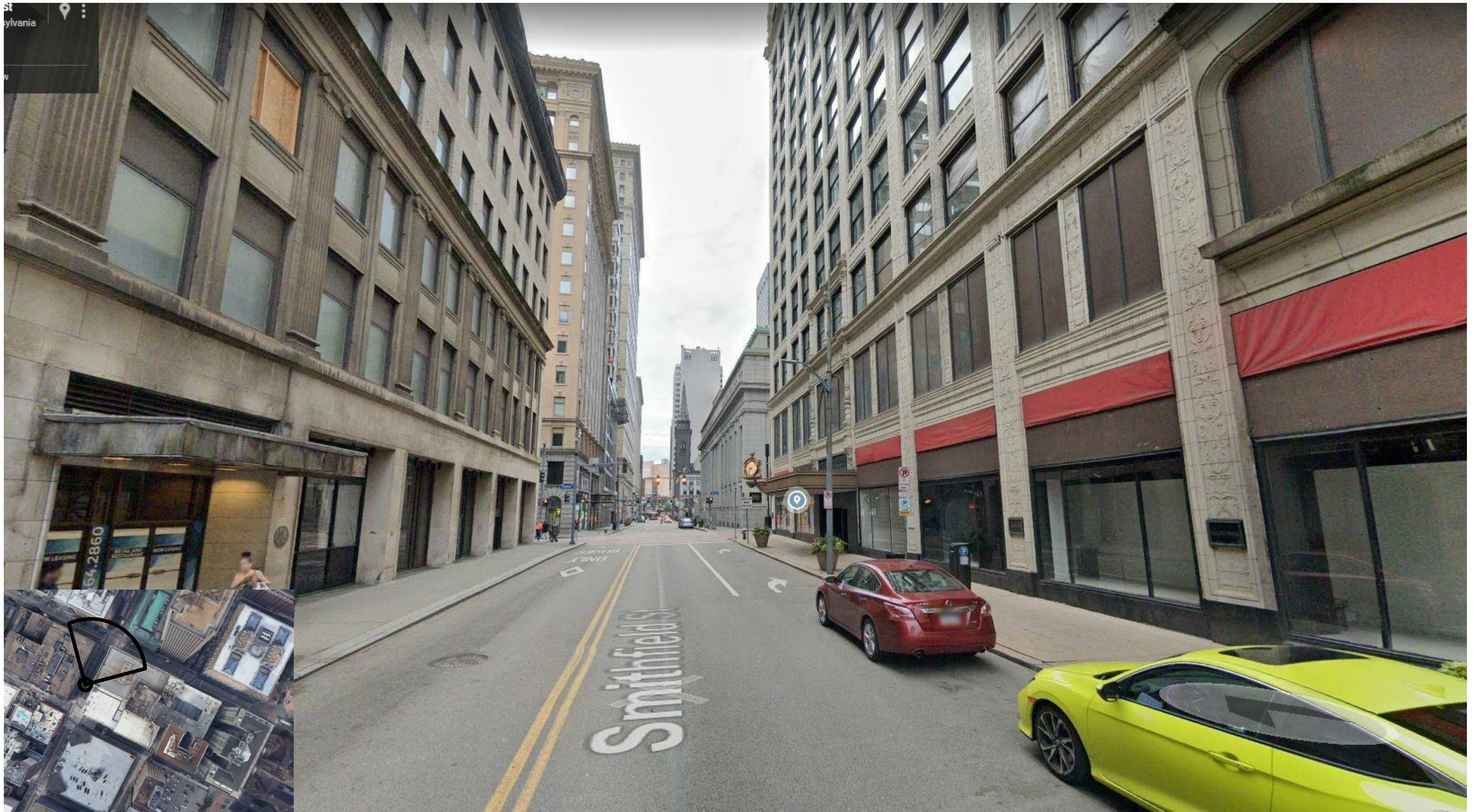
7/16" Insulating Vision Glass

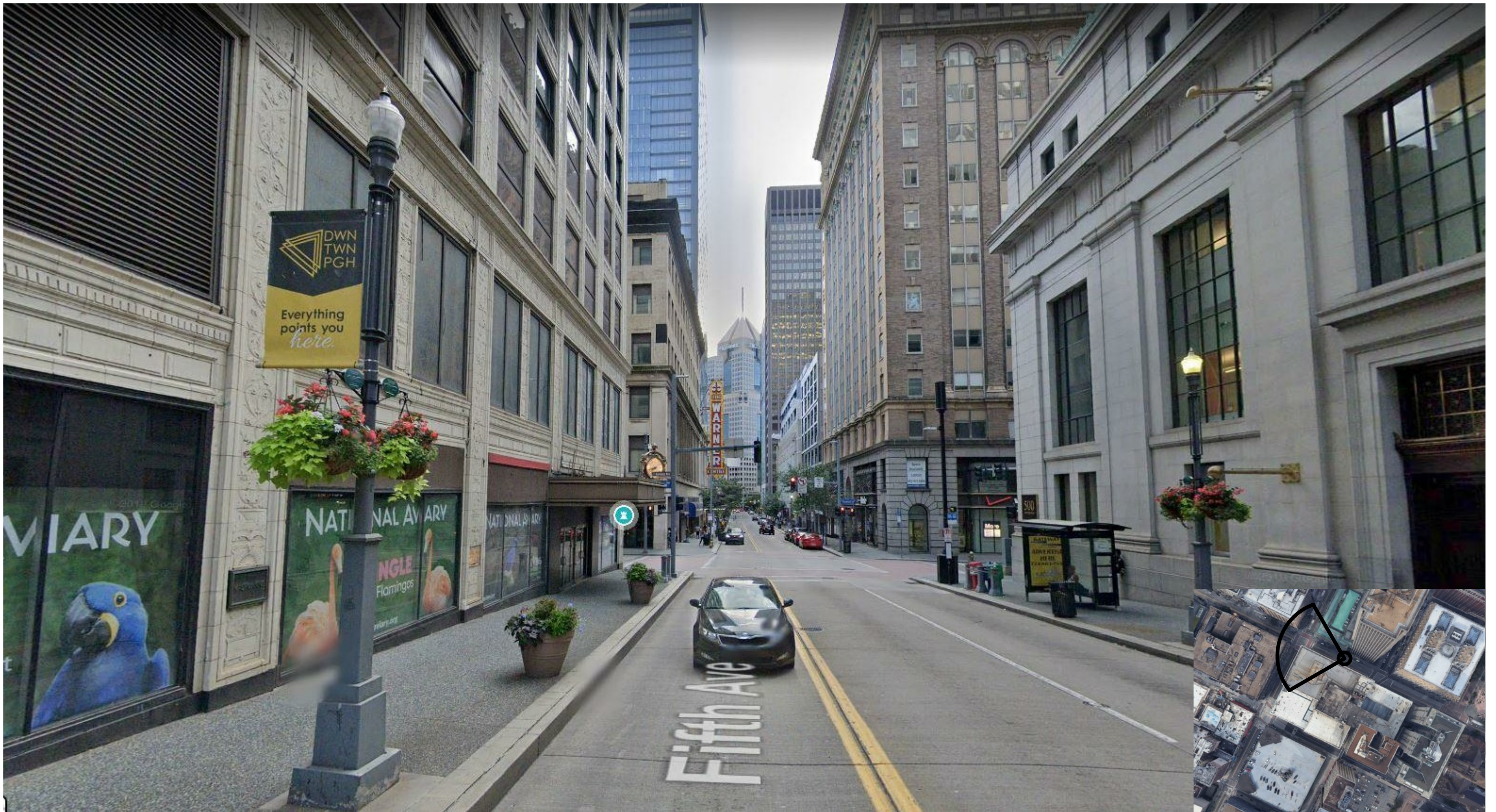
④ Typical 5 Part Storefront System - Planning Commission
1/2" = 1'-0"

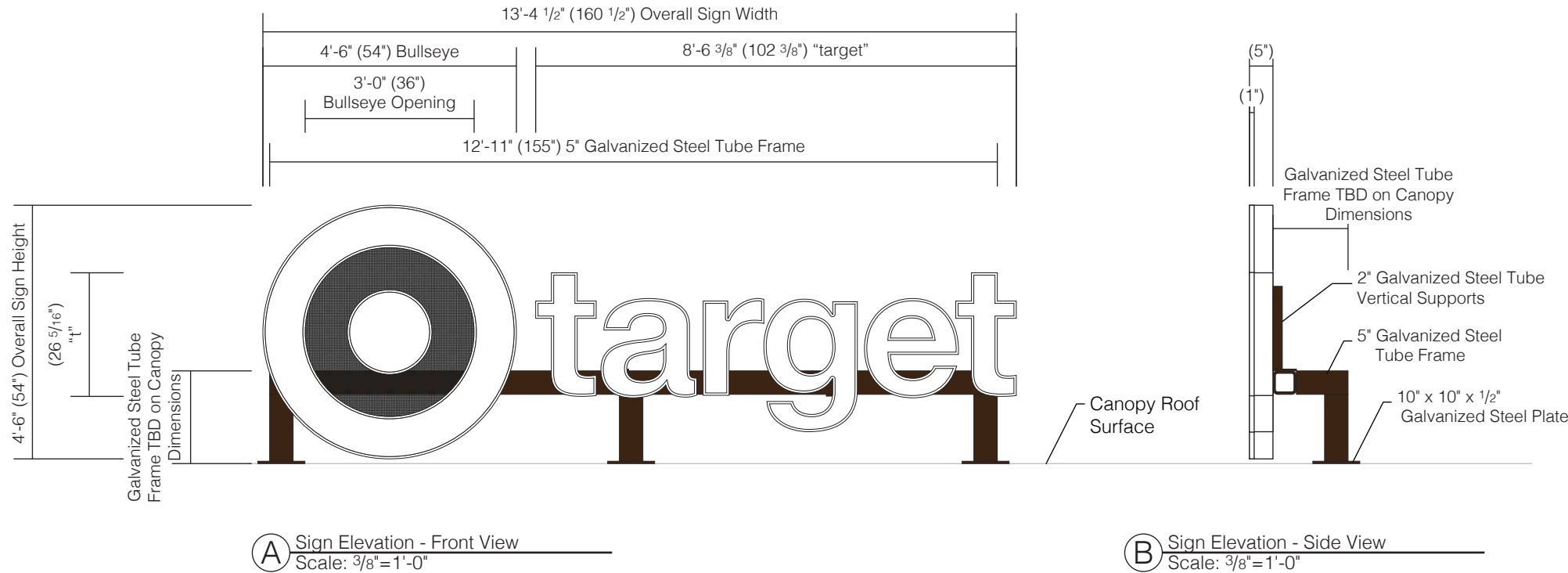
② Window Profile Section
1 1/2" = 1'-0"



 400 5th Avenue, Pittsburgh, PA | Design Development | October 26, 2020







Specifications

Qty = 160.00 Sq Ft

Single Face Internally Illuminated Building Sign

- 5" Deep custom fabricated face lit channel letters
- White acrylic faces
- 1/2" x 1" custom fabricated aluminum retainer; 1/8" aluminum at the face, .090 aluminum along the return; painted white
- .063 Aluminum returns; painted white
- 1/8" Aluminum letter backs; painted white
- White Sloan LED illumination & power supplies
- Center of bullseye to mount to 1/8" perforated aluminum background panel; painted Dark Bronze
- Channel Letters mounted to 2" x 2" x 1/4" tube steel supports with to 5" x 5" x 3/8" steel plates; dark bronze galvanized finish
- Steel plates bolted to 5" x 5" x 1/4" tube steel frame; dark bronze galvanized finish
- Tube steel frame mounted to structure in existing entrance canopy with (Qty:3) 10" x 10" x 1/2" steel mounting plates; dark bronze galvanized finish

*120V

*Remote wired power supplies

*Electrical service brought to location by others

*Final connection by others

*Additional flashing / sealing by roofing contractor to insure water tight seal at all mounting locations

*Approx Sign Weight 880 lb

VIF

*Detailed information required regarding existing canopy structure for sign mounting

*Detailed dimensions of existing canopy needed

*Detailed site survey required before production

*Location of power supplies

*Wall Section Drawings required if available

Colors & Materials

Paint

White; Gloss Finish; Akzo Nobel

Dark Bronze; Satin Finish; Akzo Nobel

Galvanized Steel

Dark Bronze

Acrylic

White: Chemcast 7328



C Building Elevation - 5th Avenue
Scale: 1/4"=1'-0"



125 Samuel Barnet Boulevard
New Bedford, MA 02745
800.544.0961 | poyantsigns.com



#T3392
400 5th Avenue
Pittsburgh, PA

Project: 18385
Target

Sales: Gary McCoy
Date: 08.27.20
Designer: JN

Note:
This is an original unpublished drawing created by Poyant Signs, Inc. It is submitted for your personal use in connection with a project being planned for you by Poyant Signs, Inc. It is not to be shown to anyone outside your organization, nor is it to be reproduced, copied or exhibited in any fashion until transferred.

Revisions:
10/2/20 JN - R1 Revise per client mark up
10/15/20 JN - R2 Update Elevation
10/26/20 JN - R3 Replace TGT rendering

UL
This sign is intended to be installed in accordance with the requirements of Article 600 of the National Electrical Code and / or other applicable local codes. This includes proper grounding and bonding of the sign.

Approved By:

Date:

Exterior Main Entry Sign
5th Avenue

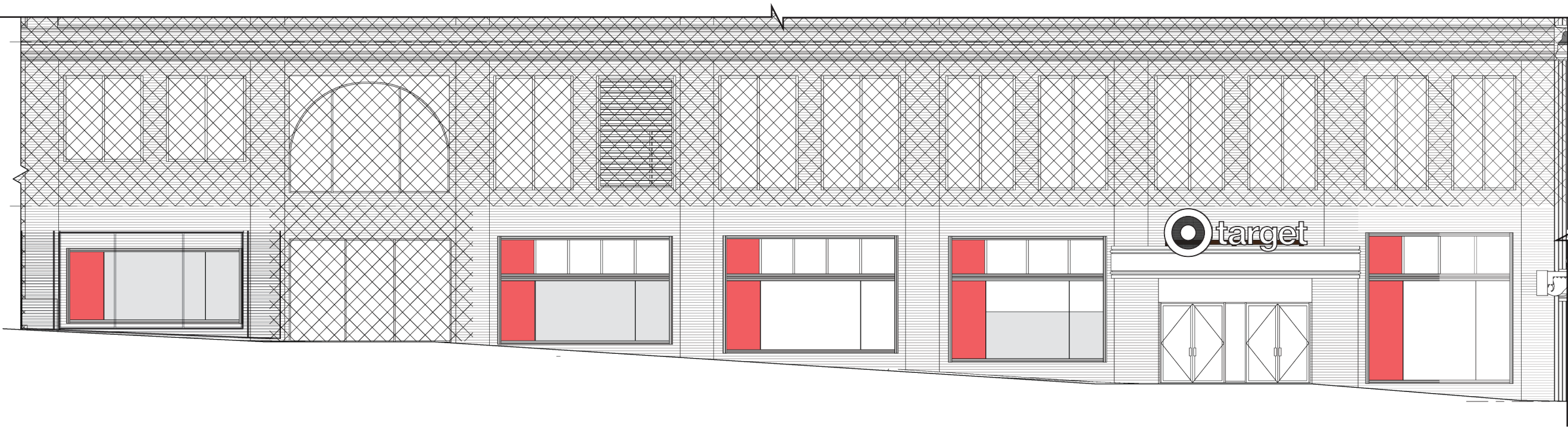
Option A



D Photo Comp - Existing
Scale: Not to Scale



E Photo Comp - Proposed
Scale: Not to Scale



F Building Elevation - 5th Avenue
Scale: 3/32"=1'-0"

Project: 18385
Target

Sales: Gary McCoy
Date: 08.27.20
Designer: JN

Note:
This is an original unpublished drawing created by Poyant Signs, Inc. It is submitted for your personal use in connection with a project being planned for you by Poyant Signs, Inc. It is not to be shown to anyone outside your organization, nor is it to be reproduced, copied or exhibited in any fashion until transferred.

Revisions:
10/2/20 JN - R1 Revise per client mark up
10/15/20 JN - R2 Update Elevation
10/26/20 JN - R3 Replace TGT rendering

UL
This sign is intended to be installed in accordance with the requirements of Article 600 of the National Electrical Code and / or other applicable local codes. This includes proper grounding and bonding of the sign.

Approved By:

Date:

Exterior Main Entry Sign
5th Avenue

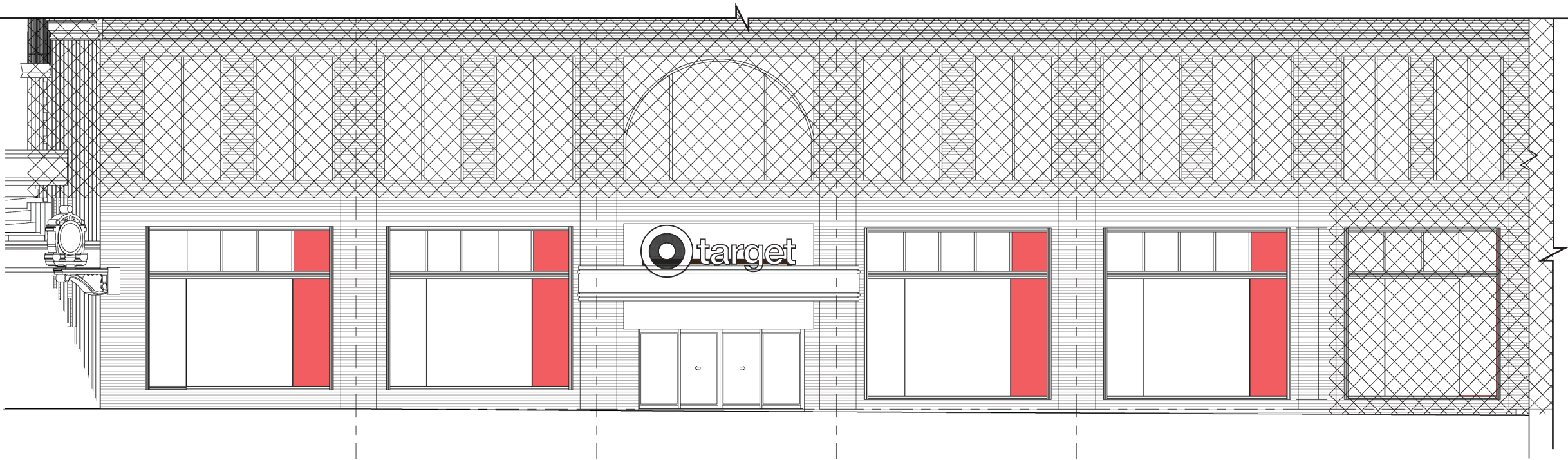
Option A



D Photo Comp - Existing
Scale: Not to Scale



E Photo Comp - Proposed
Scale: Not to Scale



F Building Elevation - Smithfield Street
Scale: 3/32"=1'-0"

Project: 18385
Target

Sales: Gary McCoy
Date: 08.27.20
Designer: JN

Note:
This is an original unpublished drawing created by Poyant Signs, Inc. It is submitted for your personal use in connection with a project being planned for you by Poyant Signs, Inc. It is not to be shown to anyone outside your organization, nor is it to be reproduced, copied or exhibited in any fashion until transferred.

Revisions:
10/2/20 JN - R1 Revise per client mark up
10/15/20 JN - R2 Update Elevation
10/26/20 JN - R3 Replace TGT rendering
update elevation - 5 bays on Smithfield

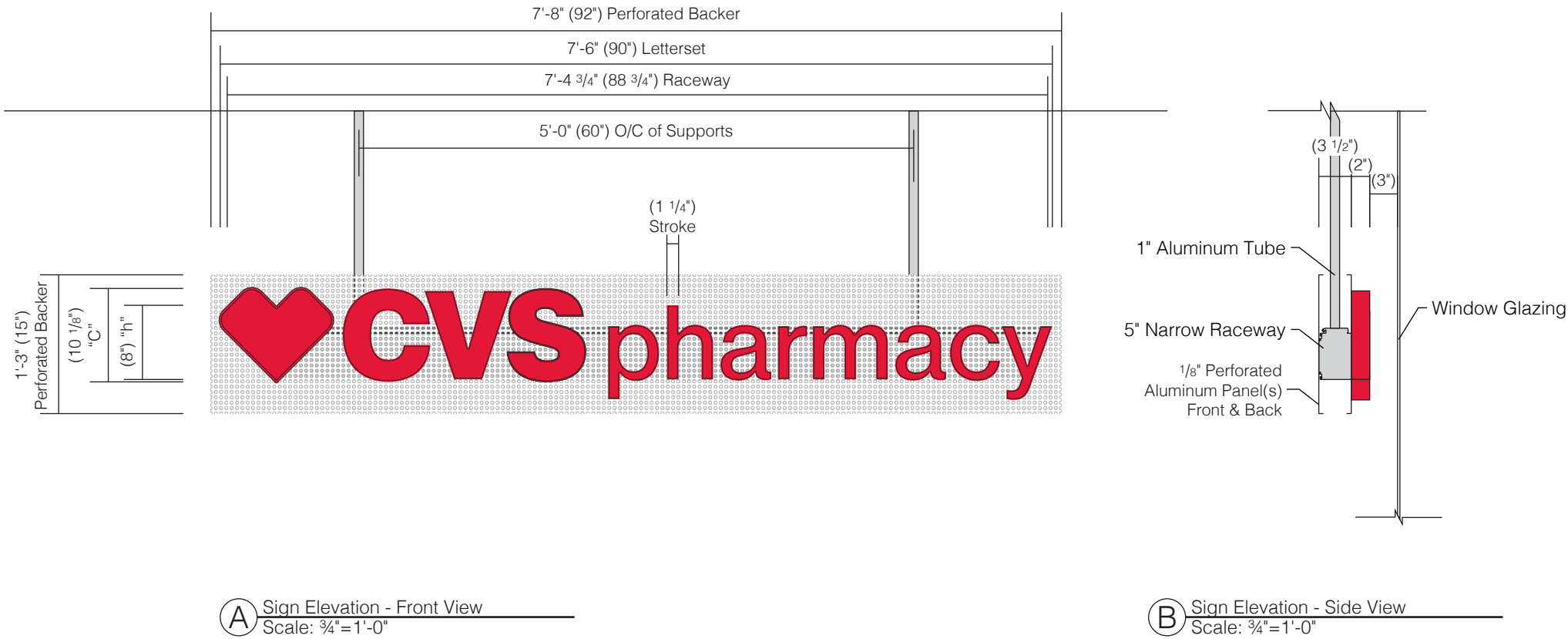
UL
This sign is intended to be installed in accordance with the requirements of Article 600 of the National Electrical Code and / or other applicable local codes. This includes proper grounding and bonding of the sign.

Approved By:

Date:

Exterior Main Entry Sign
Smithfield Street

Option A



Specifications

Qty = 19.58 Sq Ft

Single Face Internally Illuminated Interior Window Sign

- Interior sign hung in window
- 2" Deep thin trim channel letters with solid backs
- White acrylic faces with red translucent vinyl applied first surface
- Retainers, returns and backs painted red
- White LED illumination
- Channel letters stud mounted to low profile raceway; painted light gray
- (Qty:2) 1/8" perforated aluminum background panels with brake form flange top & bottom installed to sandwich raceway; painted light gray
- Sign suspended from the ceiling with 3/8" threaded rod attached to blocking in the ceiling
- Additional aluminum angle support inside raceways as req'd
- Exposed length of threaded rod to be sleeved with 1" aluminum round tube; painted light gray

*120V

*Power supplies housed in raceway

*Interior installation: No Weep Holes

*Electrical service brought to location by others

*Final Connection by others

VIF

*Confirm blocking in ceiling provided by General Contractor

*Confirm distance from Finished Floor to Ceiling

*Detailed site survey required before production

*Wall Section Drawings required if available

Colors & Materials

Acrylic

White Acrylic

Vinyl

Cardinal Red Translucent: 3M 3630-53

Paint

CVS Red; Satin Finish

Light Gray; Satin Finish

Client to Spec. Color Code



D Thin Trim Letter - Typical
Not to Scale



125 Samuel Barnet Boulevard
New Bedford, MA 02745
800.544.0961 | poyantsigns.com



#T3392
400 5th Avenue
Pittsburgh, PA

Project: 18385
Target

Sales: Gary McCoy
Date: 08.27.20
Designer: JN

Note:
This is an original unpublished drawing created by Poyant Signs, Inc. It is submitted for your personal use in connection with a project being planned for you by Poyant Signs, Inc. It is not to be shown to anyone outside your organization, nor is it to be reproduced, copied or exhibited in any fashion until transferred.

Revisions:
10/2/20 JN - R1 Revise per client mark up
10/15/20 JN - R2 Update Elevation
RW Light Gray; Add Rear Perf. Panel
10/26/20 JN - R3 revise to linear CVS sign



This sign is intended to be installed in accordance with the requirements of Article 600 of the National Electrical Code and / or other applicable local codes. This includes proper grounding and bonding of the sign.

Approved By:

Date:

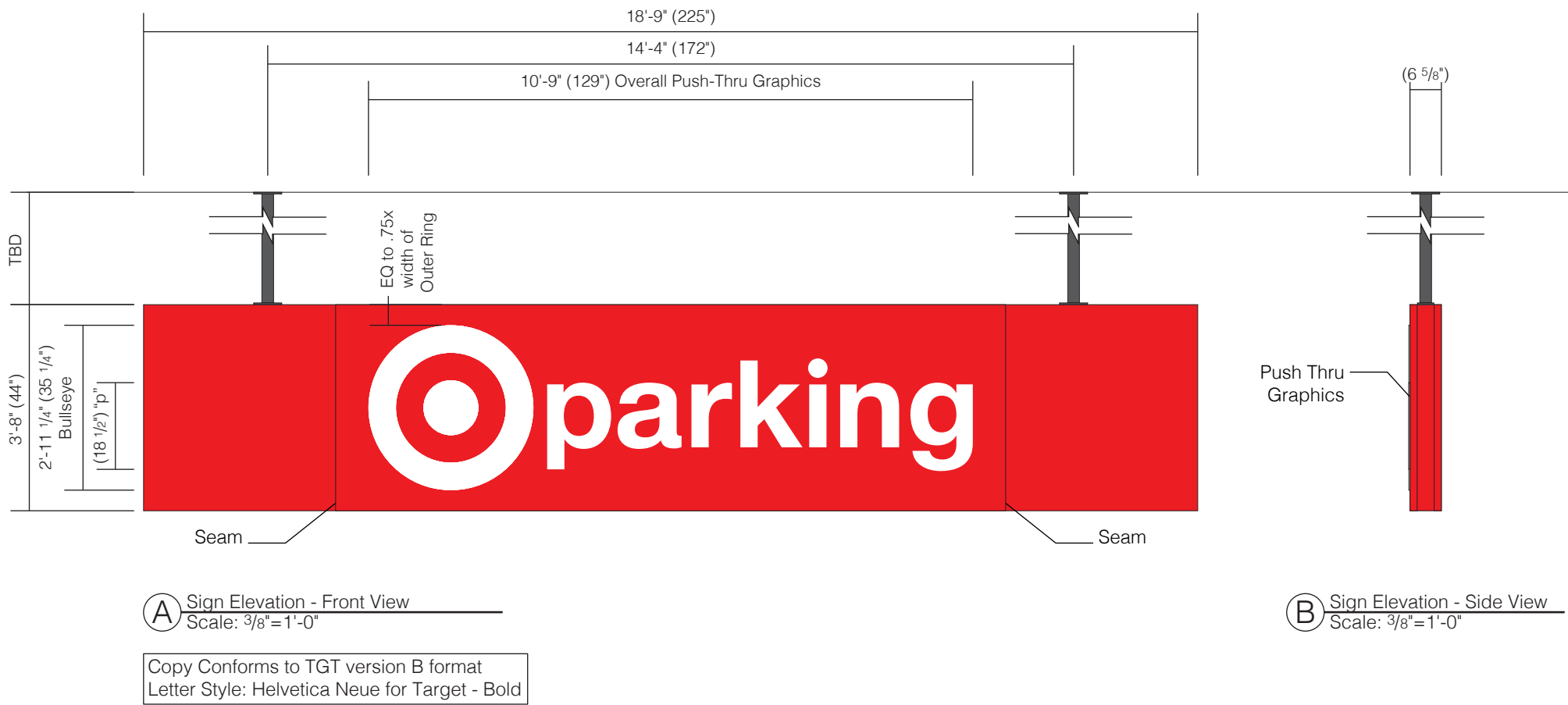
Interior CVS Hanging Sign
5th Avenue

Option A

Sign Type 18385.3A-R3

3A.1
1 of 1





Specifications	
Qty = 1	68.75 Sq Ft

Single Face Internally Illuminated Cabinet
with Push-Thru Graphics

- 65/8" Deep type III cabinet with 1 1/2" retainers & push thru graphics; painted red
- .090 Aluminum stencil cut bleed face; painted red (oversized 12'-0" x 4'-0" sheets required)
- Back of cabinet to be .090 aluminum bleed face; removable for surface
- 1 1/2" x 1 1/2" x 3/16" aluminum angle at all seams
- 1/2" Clear acrylic push thru graphics with white translucent vinyl applied second surface
- White LED illumination & power supplies
- Cabinet suspended from the ceiling with 2 1/2" x 2 1/2" x 1/4" steel square tube; with 6" x 6" x 3/8" steel plates at the ceiling and 6" x 3" x 3/8" at the cabinet welded at each end; dark gray galvanized finish
- Cabinet mounted to ceiling of parking structure with anchoring hardware as required

- *120V
- *Power supplies housed in cabinet
- *Electrical service brought to location by others
- *Final Connection by others

- VIF
- *Confirm distance from Finished Floor to Ceiling
 - *Confirm desired mounting height
 - *Width and height of opening
 - *Confirm ceiling material for appropriate mounting method
 - *Detailed site survey required before production
 - *Wall Section Drawings required if available

Colors & Materials

Acrylic

Clear Acrylic

Vinyl

White Translucent: 3M 3630-20

Paint

Red; Gloss Finish - Matthews 82074LVG

Galvanized Steel

Dark Gray

Poyant
Building Your Brand

125 Samuel Barnet Boulevard
New Bedford, MA 02745
800.544.0961 | poyantsigns.com

target

#T3392
400 5th Avenue
Pittsburgh, PA

Project: 18385
Target

Sales: Gary McCoy
Date: 08.27.20
Designer: JN

Note:
This is an original unpublished drawing created by Poyant Signs, Inc. It is submitted for your personal use in connection with a project being planned for you by Poyant Signs, Inc. It is not to be shown to anyone outside your organization, nor is it to be reproduced, copied or exhibited in any fashion until transferred.

Revisions:
10/2/20 JN - R1 Revise per client mark up
10/15/20 JN - R2 Reduce push-thru graph



This sign is intended to be installed in accordance with the requirements of Article 600 of the National Electrical Code and / or other applicable local codes. This includes proper grounding and bonding of the sign.

Approved By:

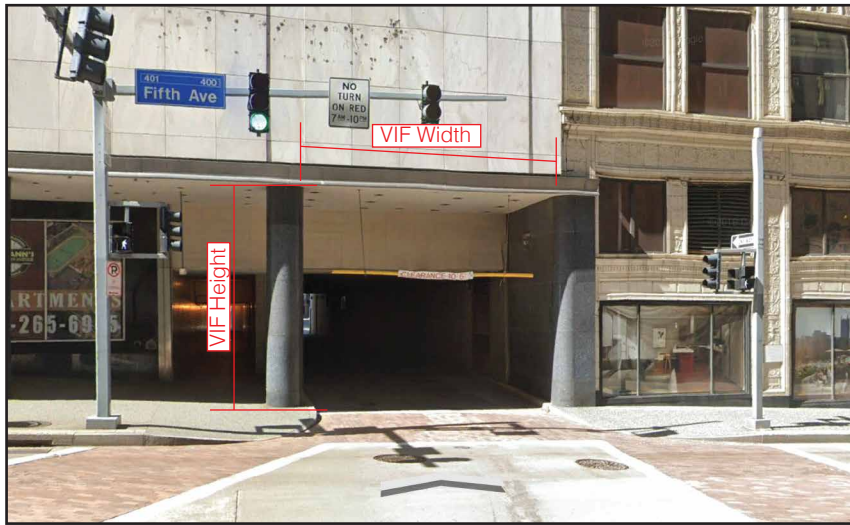
Date:

Parking Entrance Hanging Sign
5th Avenue & Cherry Way

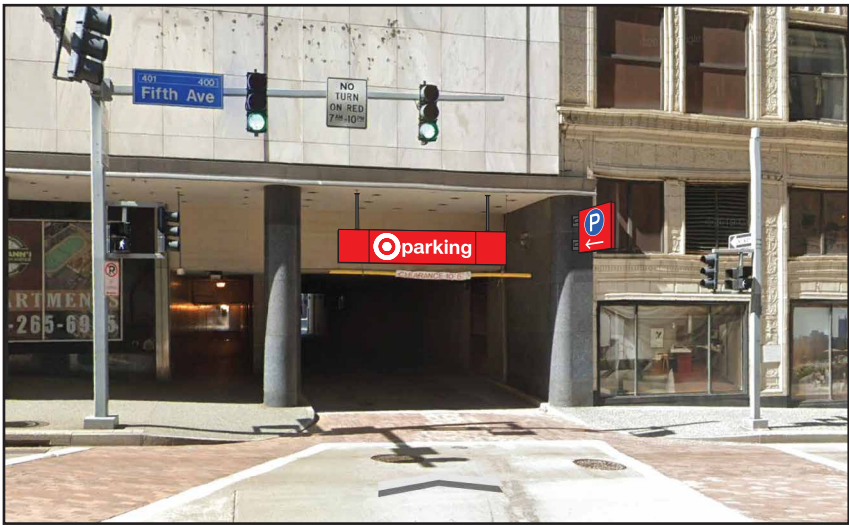
Option A

Sign Type 18385.4A-R2

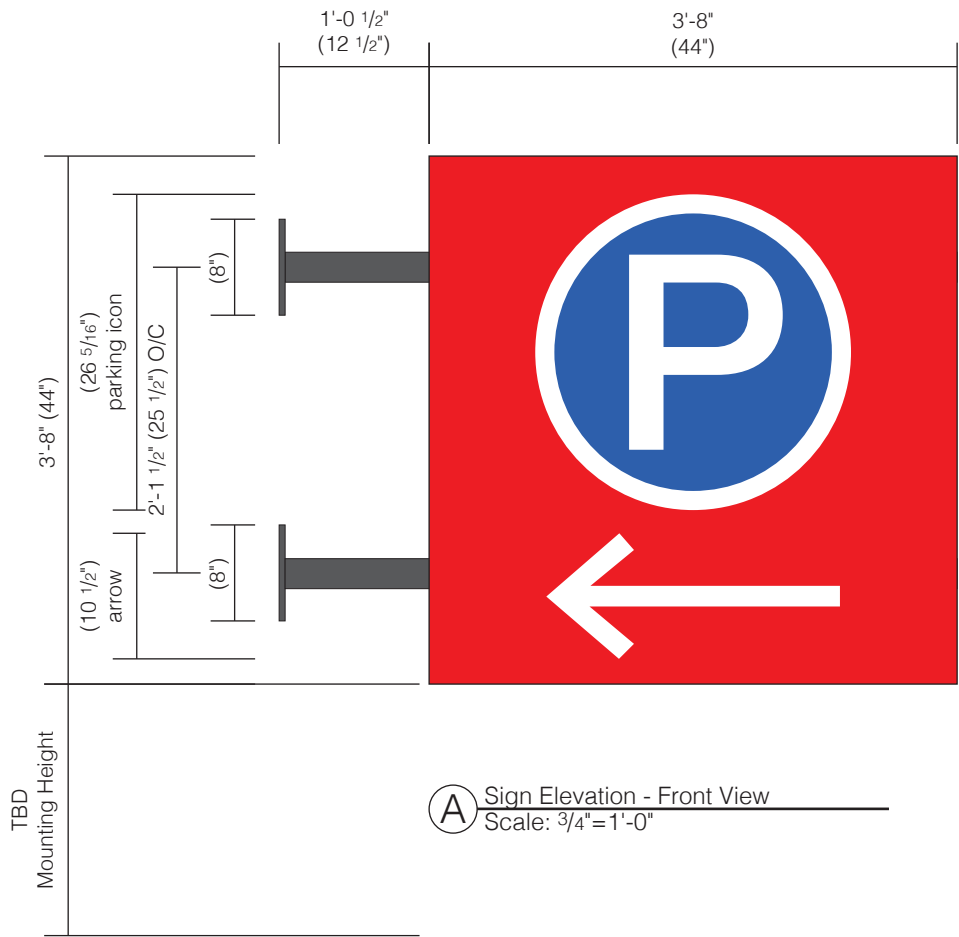
4A.1
1 of 1



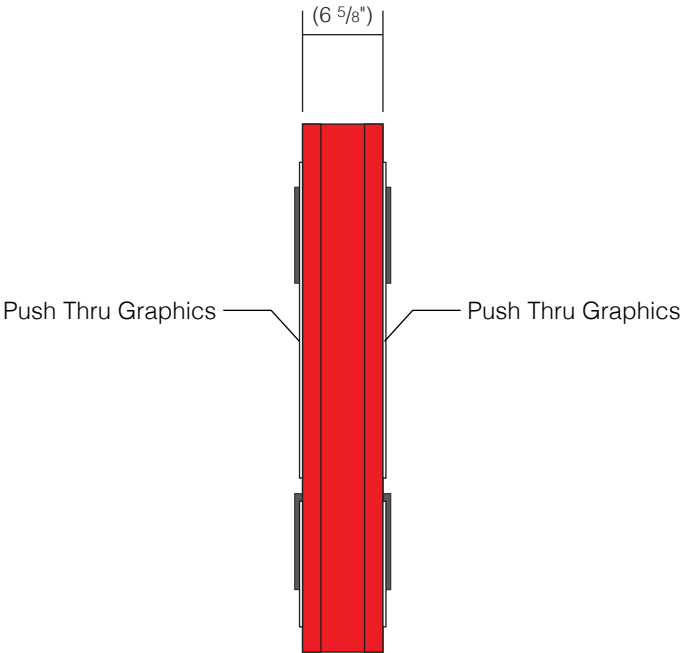
C Photo Comp - Existing
Scale: Not to Scale



D Photo Comp - Proposed
Scale: Not to Scale



A Sign Elevation - Front View
Scale: 3/4"=1'-0"



B Sign Elevation - Side View
Scale: 3/4"=1'-0"

Specifications	
Qty = 1	13.44 Sq Ft

Double Face Internally Illuminated Blade Sign
with Push-Thru Graphics

- 65/8" Deep type III cabinet with 1 1/2" retainers & push thru graphics; painted red
- .090 Aluminum stencil cut bleed faces; painted red
- 1/2" Clear acrylic push thru graphics with white translucent vinyl applied second surface
- Blue translucent vinyl applied first surface to parking icon
- White LED illumination & power supplies
- (Qty:2) 2 1/2" x 2 1/2" x 1/4" x 56" square steel tubes run through cabinet and welded to mounting plates at one end; dark gray galvanized finish
- (Qty:2) 8" x 8" x 1/2" steel mounting plates; dark gray galvanized finish
- Cabinet mounted to building fascia with anchoring hardware as required

- *120V
- *Power supplies housed in cabinet
- *Electrical service brought to location by others
- *Final Connection by others

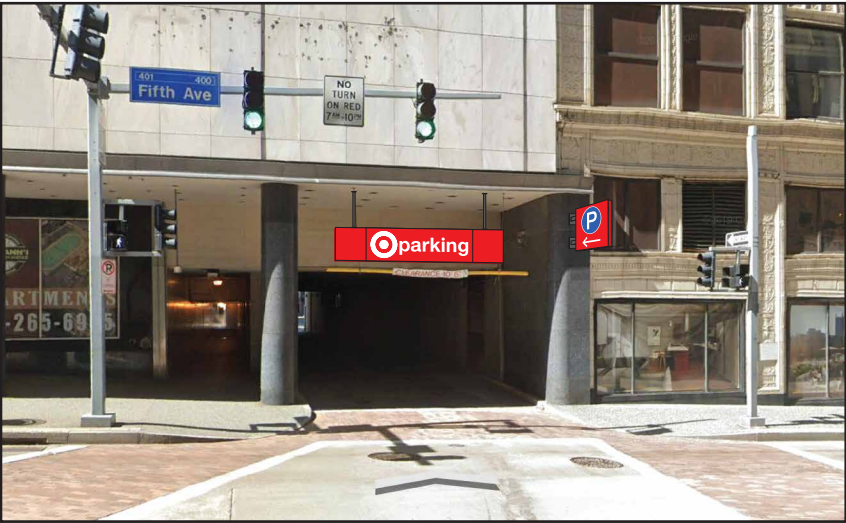
- VIF
- *Confirm desired mounting height
 - *Confirm wall material for appropriate mounting method
 - *Detailed site survey required before production
 - *Wall Section Drawings required if available

Colors & Materials

- Acrylic
- Clear Acrylic
- Vinyl
- White Translucent: 3M 3630-20
 - Sultan Blue Translucent: 3M 3630-157
- Paint
- Red; Gloss Finish - Matthews 82074LVG
- Galvanized Steel
- Dark Gray



C Photo Comp - Existing
Scale: Not to Scale



D Photo Comp - Proposed
Scale: Not to Scale



125 Samuel Barnet Boulevard
New Bedford, MA 02745
800.544.0961 | poyantsigns.com



#T3392
400 5th Avenue
Pittsburgh, PA

Project: 18385
Target

Sales: Gary McCoy
Date: 08.27.20
Designer: JN

Note:
This is an original unpublished drawing created by Poyant Signs, Inc. It is submitted for your personal use in connection with a project being planned for you by Poyant Signs, Inc. It is not to be shown to anyone outside your organization, nor is it to be reproduced, copied or exhibited in any fashion until transferred.

Revisions:
10/2/20 JN - R1 Revise per client mark up

UL
This sign is intended to be installed in accordance with the requirements of Article 600 of the National Electrical Code and / or other applicable local codes. This includes proper grounding and bonding of the sign.

Approved By:

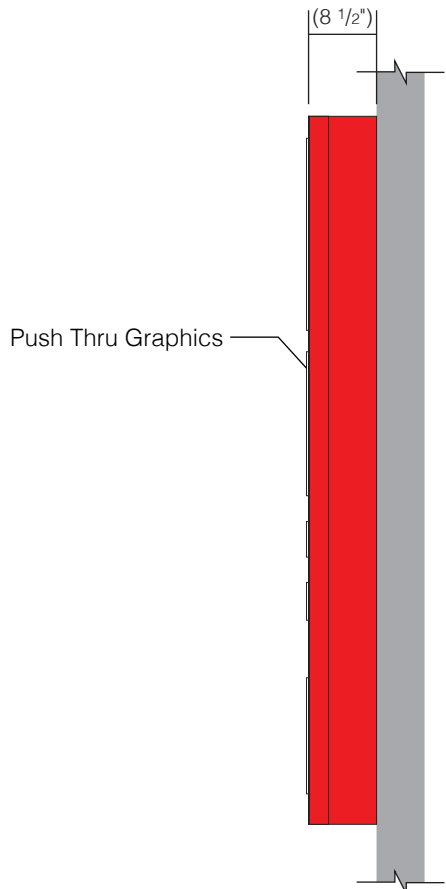
Date:

Parking Entrance Blade Sign
5th Avenue & Cherry Way

Option A



A Sign Elevation - Front View
Scale: 1/2"=1'-0"



B Sign Elevation - Side View
Scale: 1/2"=1'-0"

Specifications

Qty = 1 13.44 Sq Ft

Single Face Internally Illuminated Building Sign
with Push-Thru Graphics

- 8 1/2" Deep Small A cabinet with 2 1/2" retainers & push thru graphics; painted red
- .090 Aluminum stencil cut bleed faces; painted red
- 1/2" Clear acrylic push thru graphics with white translucent vinyl applied second surface
- Blue translucent vinyl applied first surface to parking icon
- White LED illumination & power supplies
- Cabinet mounted to building fascia with anchoring hardware as required

- *120V
- *Power supplies housed in cabinet
- *Electrical service brought to location by others
- *Final Connection by others

- VIF
- *Confirm desired mounting height
- *Confirm dimensions of install location
- *Confirm wall material for appropriate mounting method
- *Detailed site survey required before production
- *Wall Section Drawings required if available

Colors & Materials

Acrylic

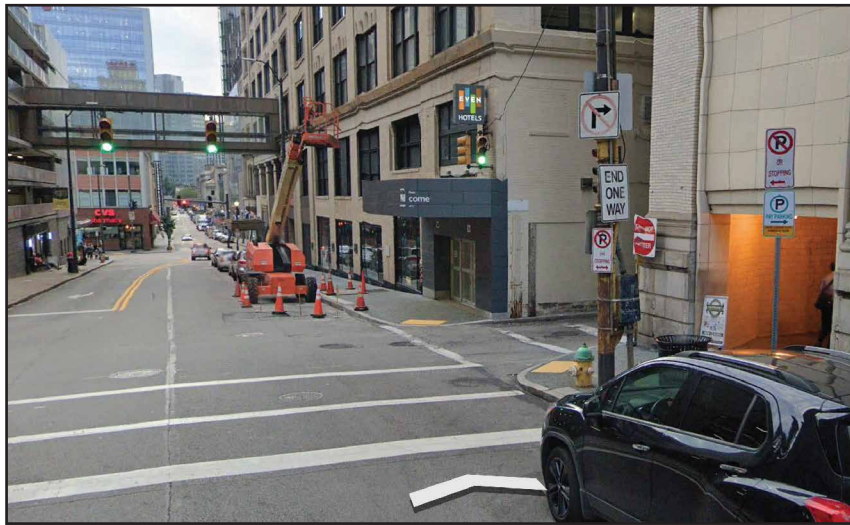
Clear Acrylic

Vinyl

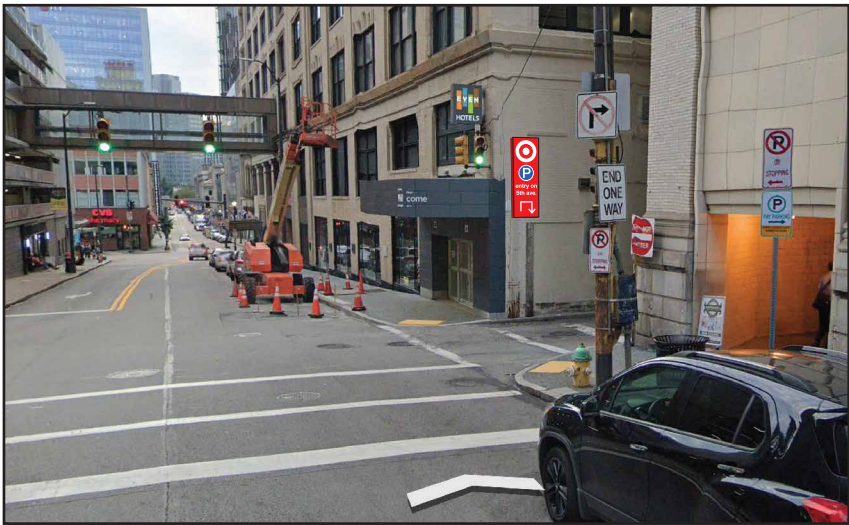
- White Translucent: 3M 3630-20
- Sultan Blue Translucent: 3M 3630-157

Paint

Red; Gloss Finish - Matthews 82074LVG



C Photo Comp - Existing
Scale: Not to Scale



D Photo Comp - Proposed
Scale: Not to Scale



125 Samuel Barnet Boulevard
New Bedford, MA 02745
800.544.0961 | poyantsigns.com



#T3392
400 5th Avenue
Pittsburgh, PA

Project: 18385
Target

Sales: Gary McCoy
Date: 08.27.20
Designer: JN

Note:
This is an original unpublished drawing created by Poyant Signs, Inc. It is submitted for your personal use in connection with a project being planned for you by Poyant Signs, Inc. It is not to be shown to anyone outside your organization, nor is it to be reproduced, copied or exhibited in any fashion until transferred.

Revisions:
10/2/20 JN - R1 Revise per client mark up



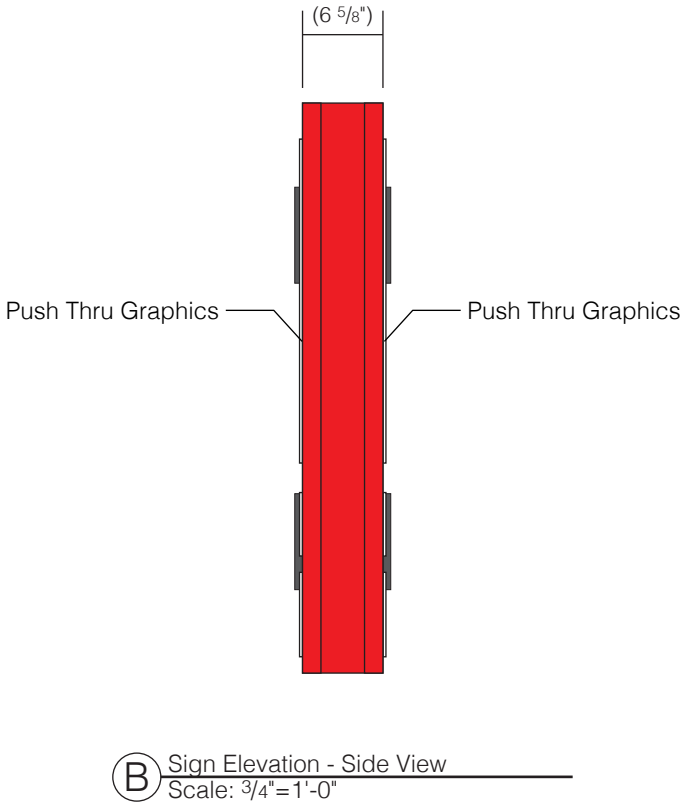
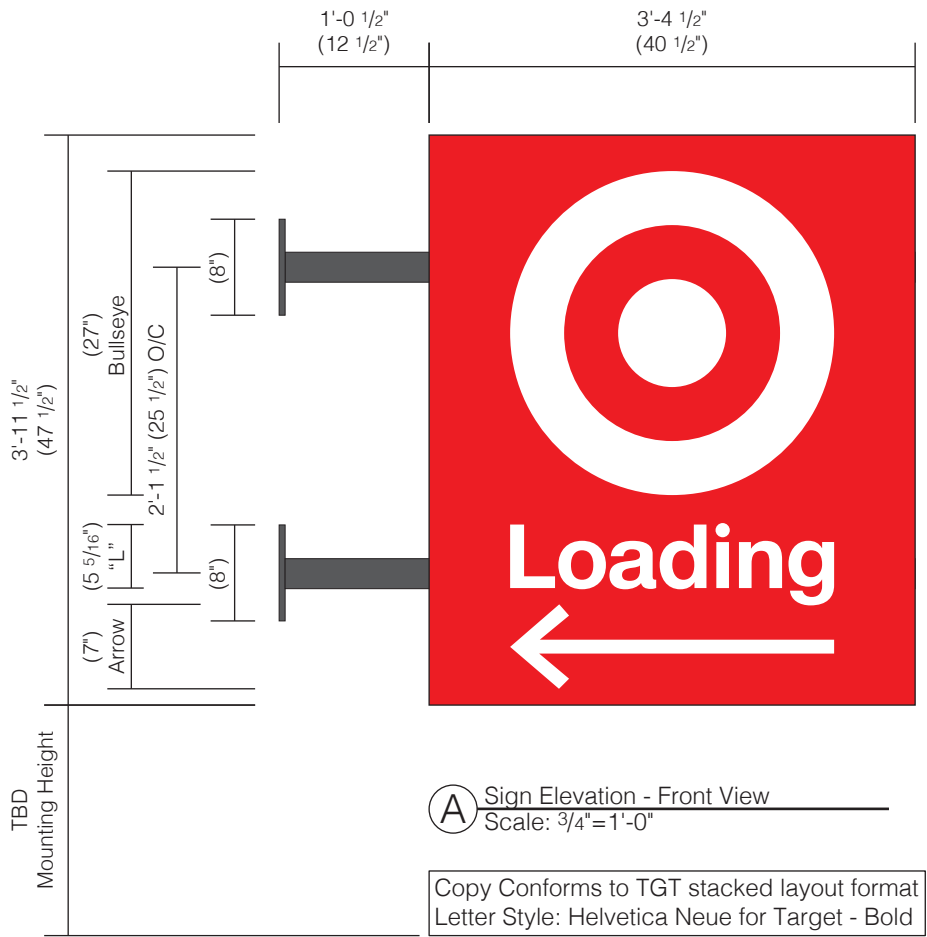
This sign is intended to be installed in accordance with the requirements of Article 600 of the National Electrical Code and / or other applicable local codes. This includes proper grounding and bonding of the sign.

Approved By:

Date:

Parking Wayfinding Sign
Forbes Avenue & Scrip Way

Option A



Specifications

Qty = 1 13.44 Sq Ft

Double Face Internally Illuminated Blade Sign
with Push-Thru Graphics

- 6⁵/₈" Deep type III cabinet with 1 1/2" retainers & push thru graphics; painted red
- .090 Aluminum stencil cut bleed faces; painted red
- 1/2" Clear acrylic push thru graphics with white translucent vinyl applied second surface
- White LED illumination & power supplies
- (Qty:2) 2 1/2" x 2 1/2" x 1/4" x 52 1/2" square steel tubes run through cabinet and welded to mounting plates at one end; dark gray galvanized finish
- (Qty:2) 8" x 8" x 1/2" steel mounting plates; dark gray galvanized finish
- Cabinet mounted to building fascia with anchoring hardware as required

- *120V
- *Power supplies housed in cabinet
- *Electrical service brought to location by others
- *Final Connection by others

VIF

- *Confirm desired mounting height
- *Confirm wall material for appropriate mounting method
- *Detailed site survey required before production
- *Wall Section Drawings required if available

Colors & Materials

Acrylic

Clear Acrylic

Vinyl

White Translucent: 3M 3630-20

Paint

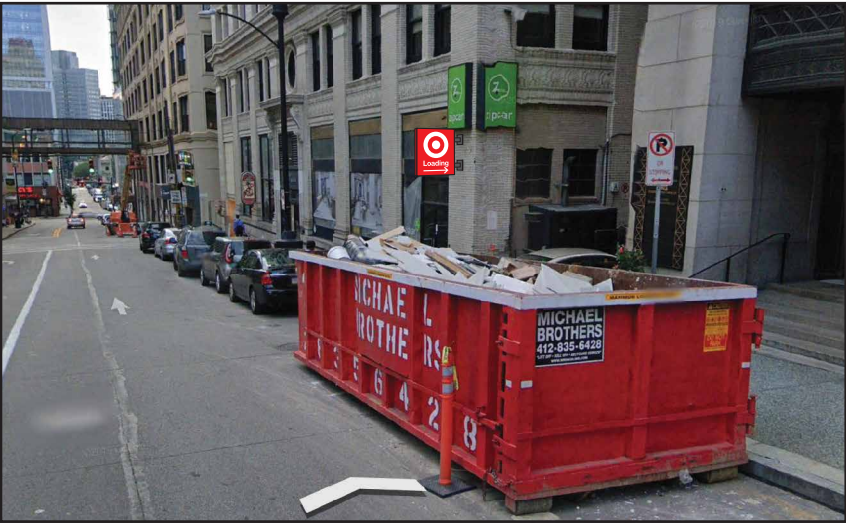
Red; Gloss Finish - Matthews 82074LVG

Galvanized Steel

Dark Gray



C Photo Comp - Existing
Scale: Not to Scale



D Photo Comp - Proposed
Scale: Not to Scale



125 Samuel Barnet Boulevard
New Bedford, MA 02745
800.544.0961 | poyantsigns.com



#T3392
400 5th Avenue
Pittsburgh, PA

Project: 18385
Target

Sales: Gary McCoy
Date: 08.27.20
Designer: JN

Note:
This is an original unpublished drawing created by Poyant Signs, Inc. It is submitted for your personal use in connection with a project being planned for you by Poyant Signs, Inc. It is not to be shown to anyone outside your organization, nor is it to be reproduced, copied or exhibited in any fashion until transferred.

Revisions:
10/2/20 JN - R1 Revise per client mark up



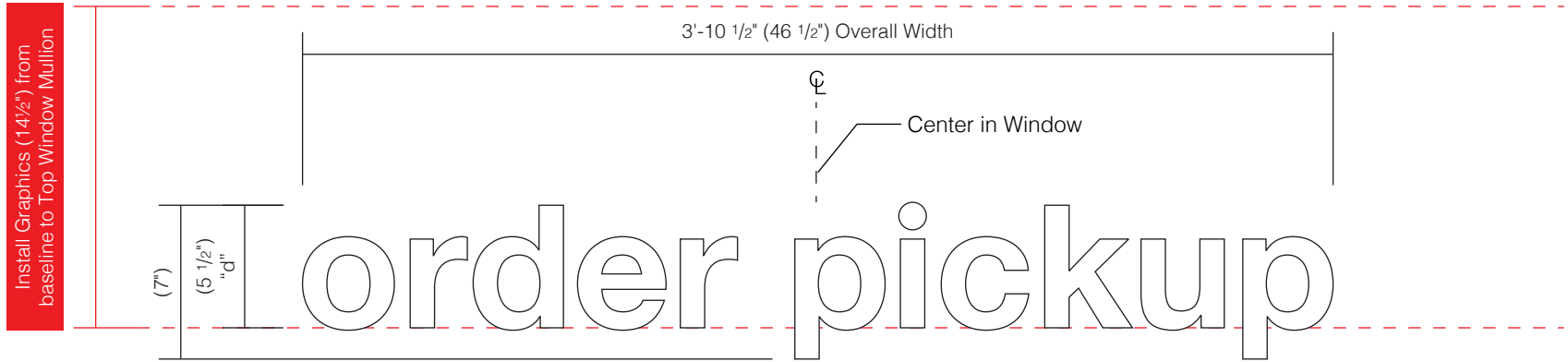
This sign is intended to be installed in accordance with the requirements of Article 600 of the National Electrical Code and / or other applicable local codes. This includes proper grounding and bonding of the sign.

Approved By:

Date:

Loading Blade Sign
Forbes Avenue & Cherry Way

Option A



A Sign Elevation - Front View
Scale: 1 1/2" = 1'-0"

Specifications

Qty = 1	1.30 Sq Ft
---------	------------

Opaque Window Graphics
*Clean Glass Prior to Install

- Opaque window graphics applied to second surface (inside)

Colors & Materials

Vinyl

	White: Arlon 2100-02
--	----------------------

Poyant
Building Your Brand

125 Samuel Barnet Boulevard
New Bedford, MA 02745
800.544.0961 | poyantsigns.com

target

#T3392
400 5th Avenue
Pittsburgh, PA

Project: 18385
Target

Sales: Gary McCoy
Date: 08.27.20
Designer: JN

Note:
This is an original unpublished drawing created by Poyant Signs, Inc. It is submitted for your personal use in connection with a project being planned for you by Poyant Signs, Inc. It is not to be shown to anyone outside your organization, nor is it to be reproduced, copied or exhibited in any fashion until transferred.

Revisions:
10/2/20 JN - R1 Revise per client mark up
10/15/20 JN - R2 Update Elevation

UL

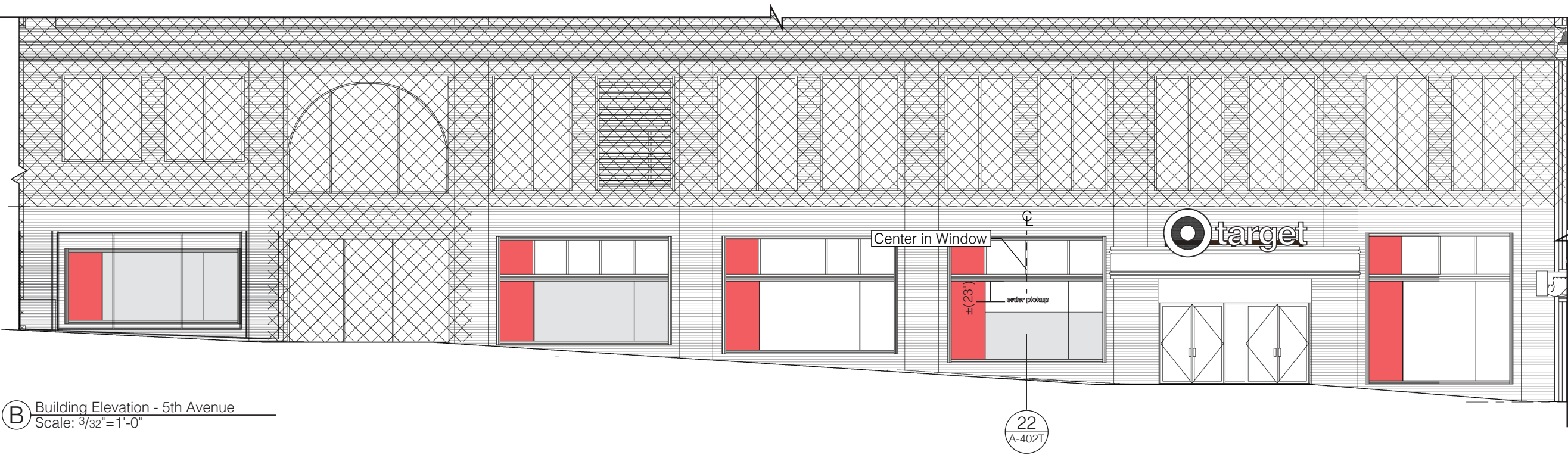
This sign is intended to be installed in accordance with the requirements of Article 600 of the National Electrical Code and / or other applicable local codes. This includes proper grounding and bonding of the sign.

Approved By:

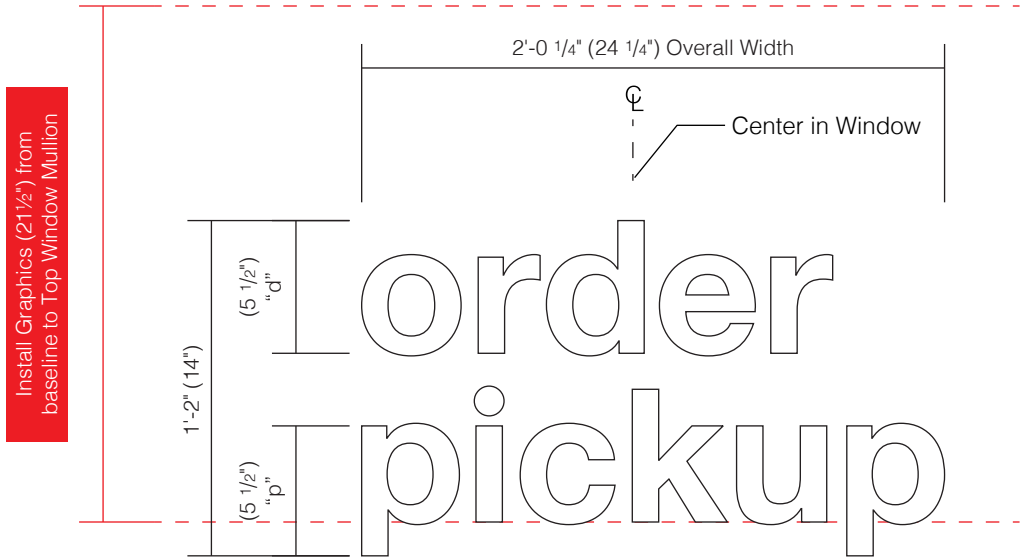
Date:

Window Graphics
5th Avenue

Option A



B Building Elevation - 5th Avenue
Scale: 3/32" = 1'-0"



A Sign Elevation - Front View
Scale: 1 1/2" = 1'-0"

Specifications

Qty = 1	1.30 Sq Ft
---------	------------

Opaque Window Graphics
*Clean Glass Prior to Install

- Opaque window graphics applied to second surface (inside)

Colors & Materials

Vinyl

	White: Arlon 2100-02
--	----------------------

Poyant
Building Your Brand

125 Samuel Barnet Boulevard
New Bedford, MA 02745
800.544.0961 | poyantsigns.com

target

#T3392
400 5th Avenue
Pittsburgh, PA

Project: 18385
Target

Sales: Gary McCoy
Date: 08.27.20
Designer: JN

Note:
This is an original unpublished drawing created by Poyant Signs, Inc. It is submitted for your personal use in connection with a project being planned for you by Poyant Signs, Inc. It is not to be shown to anyone outside your organization, nor is it to be reproduced, copied or exhibited in any fashion until transferred.

Revisions:
10/2/20 JN - R1 Revise per client mark up
10/15/20 JN - R2 Update Elevation
10/26/20 JN - R3 update elevation
- 5 bays on Smithfield

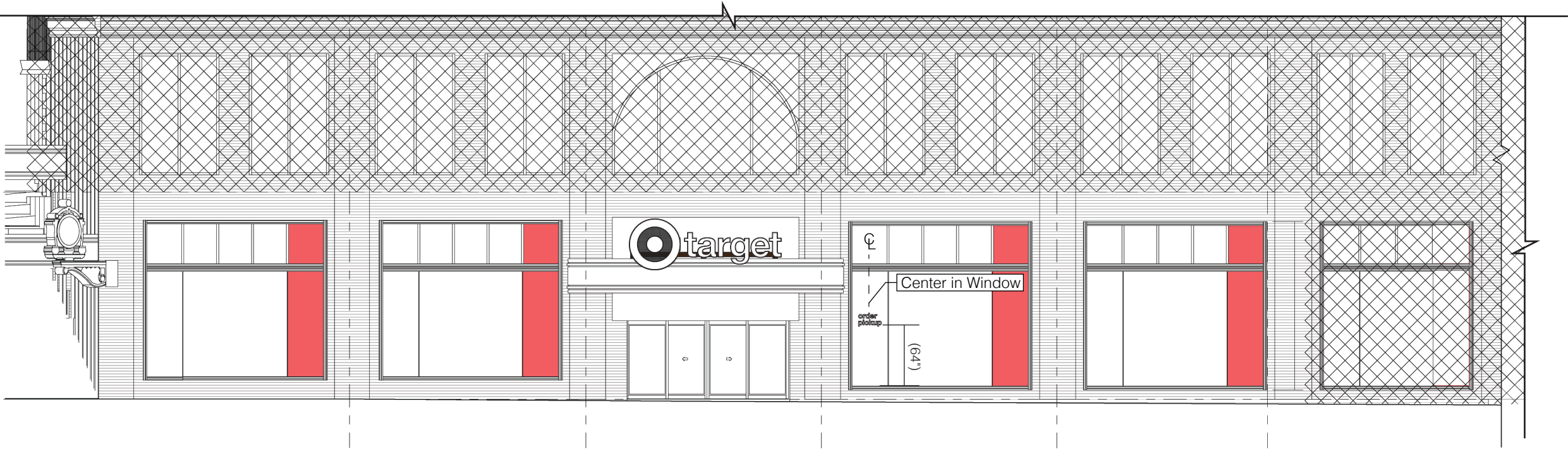
This sign is intended to be installed in accordance with the requirements of Article 600 of the National Electrical Code and / or other applicable local codes. This includes proper grounding and bonding of the sign.

Approved By:

Date:

Window Graphics
Smithfield Street

Option A



B Building Elevation - Smithfield Street
Scale: 3/32" = 1'-0"

Thank you.



#T3392
400 5th Avenue
Pittsburgh, PA



Community Presentation For
Target Landlord Documents

482 Smithfield Street, Pittsburgh, PA 15219

Closing

4862.05

11.12.2020

PC-23