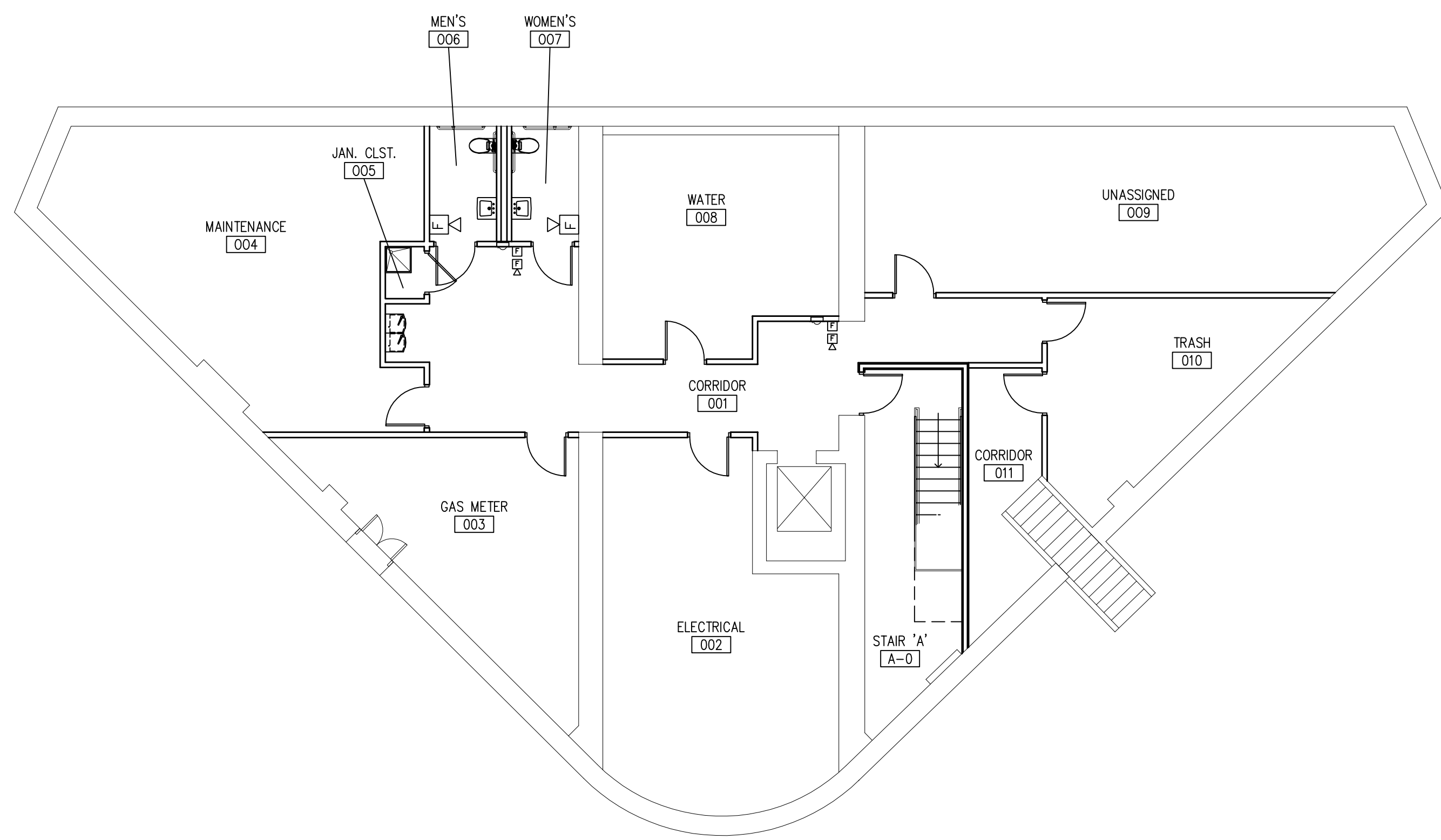
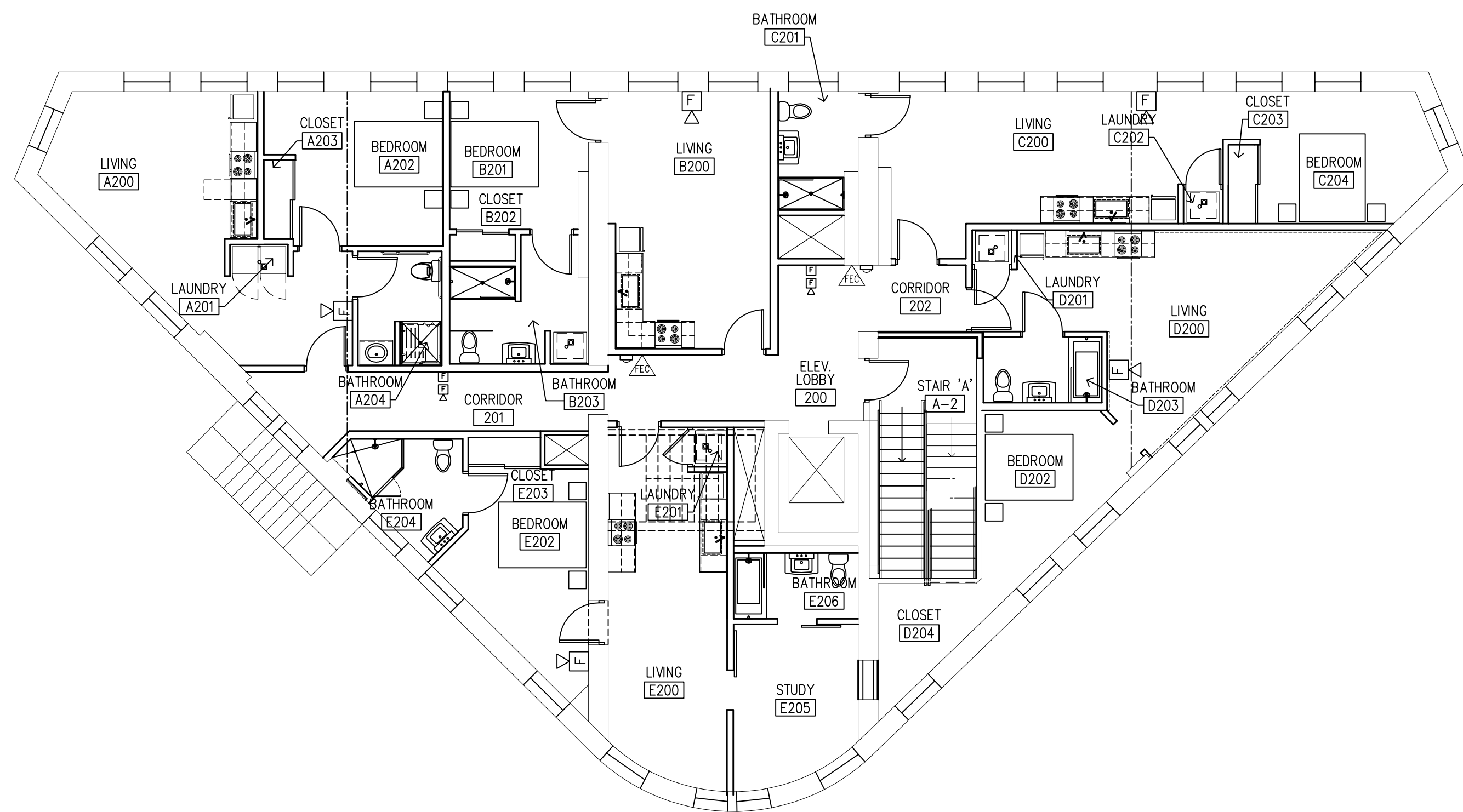


Architectural floor plan of the first floor of a building. The plan shows a central core with an elevator (103), stairs (A-1), and an entry (100). Surrounding this core are various rooms: Tenant Space (104), Bicycle Rm. (101), Mail Room (105), and a Corridor (102). The building is situated on a corner lot, with 7th Avenue to the left and Smithfield Street to the right. The plan includes detailed wall lines, door swings, and room labels.

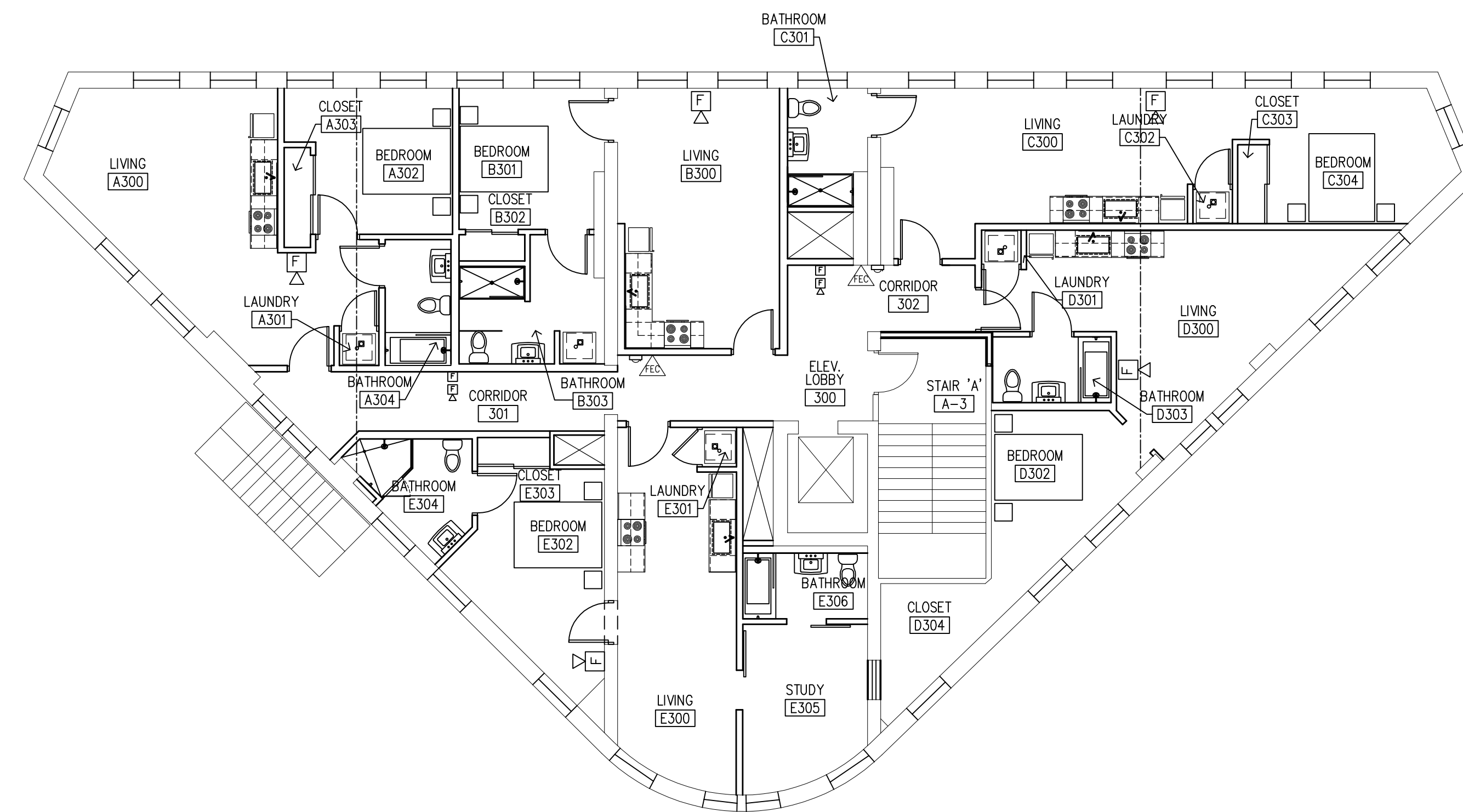
SCALE: $\frac{1}{8}" = 1'-0"$



SCALE: $\frac{1}{8}" = 1'-0"$



SCALE: $\frac{1}{8}" = 1'-0"$



SCALE: $\frac{1}{8}" = 1'-0"$

A100

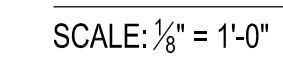
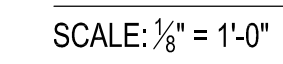
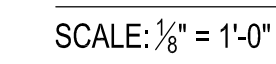
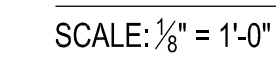
926 Liberty Avenue
Pittsburgh, PA 15222



THE CONTRACTOR SHALL CHECK ALL DIMENSIONS AND VERIFY ALL CONDITIONS PERTAINING TO THIS DRAWING AT THE BUILDING AND SHALL REPORT ANY DISCREPANCIES TO THE ARCHITECT AT ONCE.

FOURTH THRU SIXTH
FLOOR & ROOF PLANS





Commission No.: 18-8-30		Drawing No.: A101
Scale: 1/8" = 1'-0"	Date: 07.17.20	
Drawn By:	Approved: JS	




PROJECT NAME: Triangle - 926 Liberty Ave


PROJECT ADDRESS: 926 Liberty Ave Pittsburgh PA 15222

Tile- Bath

CODE	PRODUCT	CONTACT	EXTENT	NOTES	IMAGE
	Product: Colour + Dimensions - QT.CD.WWR.0408.BR Colour: Warm White Size: 4" X 8" Finish: glossy Format: Subway - refer to dwg Grout: 1/8" Thick; Mapei 47 Charcoal http://www.olympiatile.com/product/series/120/colour_dimension	Olympia Tile	1. Bath Walls, Tub skirt & Shower Surround 2. all bath walls to 40"	1. Shower and Tub Surround to 8ft 2. Tub apron 3. Edges finished with tile trim (color and dimensions REL) 4. no wall tile in powder rooms 5. Shower and tub niches to accommodate full size tile for niche	
	Product: Colour + Dimensions - REL Colour: Warm White Size: 2" X 8" Finish: glossy Format: Subway - refer to dwg Grout: 1/8" Thick; Mapei 47 Charcoal http://www.olympiatile.com/product/series/120/colour_dimension	Olympia Tile	1. tile edge framing top of wall tile	Tile trim at top edge of wall tile	 REL 5cm x 20cm (2" x 8")
	Product: A_mano Series - Glazed Porcelain - Décor 1 Colour: Décor 1 (Black & White) Size: 7,87" X 7.87" Finish: Glazed Porcelain Format: Grid Laid- refer to dwg for tile layout Grout: 1/8" Thick; Mapei 47 Charcoal https://www.olympiatile.com/product/series/938/a_mano_series	Olympia Tile	1. Bathroom Floor with bathrooms that have tubs L2-L5 2. All bathroom floors on Level 6		
	Product: A_mano Series - Glazed Porcelain - Décor 2 Colour: Décor 1 (Black & White) Size: 7,87" X 7.87" Finish: Glazed Porcelain Format: Grid Laid- refer to dwg for tile layout Grout: 1/8" Thick; Mapei 47 Charcoal https://www.olympiatile.com/product/series/938/a_mano_series	Olympia Tile	1. Bathroom Floor with walk in showers that have tubs L2-L5	1. inside showers	

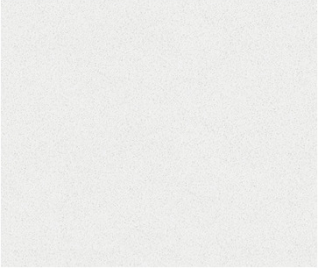
Tile -Kitchen

	Product: Colour + Dimensions - QT.CD.WWR.0408.BR Colour: Warm White Size: 3" X 6" Finish: glossy	Olympia Tile	1. Kitchen Backsplash		
--	---	--------------	-----------------------	--	---

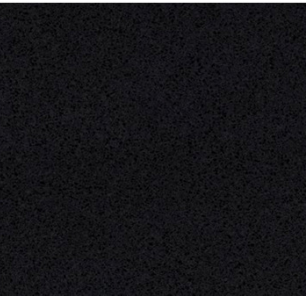
Format: Subway - refer to dwg Grout: 1/8" Thick; Mapei 47 Charcoal http://www.olympiatile.com/product/series/120/colour_dimension				
--	--	--	--	---

PROJECT NAME: Triangle - 926 Liberty Ave
PROJECT ADDRESS: 926 Liberty Ave Pittsburgh PA 15222

Stone Surfaces Kitchen

CODE	PRODUCT	SUPPLIER	EXTENT	NOTES	IMAGE
	Product: 2cm Engineered Quartz (ColorQuartz) Colour: Frost White Edge: 1 1/2" Double nose - Square Overhang: 1/2" beyond cabinet door and gable Finish: Polished https://www.colorquartz.com/colors/cq901-frost-white		1.Kitchen Counters	1. Undermount sinks 2. Polish underside of island counter where exposed up to 6" 3. Alternate accepted if approved by designer, provide as separate line item.	

Entry Threshold

CODE	PRODUCT	SUPPLIER	EXTENT	NOTES	IMAGE
	Product: 3cm Engineered Quartz (ColorQuartz) Colour: CQ900 Zen Black Finish: Polished Profile: Transition from corridor carpet to laminate flooring https://www.colorquartz.com/colors/cq900-zen-black		Suite Entry Doors	1. Slope threshold to transtion corridor flooring to suite entry flooring. 2. Width of threshold to match the width of door frame. 3. Alternate accepted if approved by owner	

PROJECT NAME: Triangle - 926 Liberty Ave

PROJECT ADDRESS: 926 Liberty Ave Pittsburgh PA 15222

Flooring

CODE	PRODUCT	SUPPLIER	EXTENT	NOTES	IMAGE
	Product/Series: Boardwalk Manufacturer: Mohawk Colour: Sand Dune Size: 7.5 inches x approx. 47 1/4" Installation: Underlay: Mohawk silentGuard		All areas except bathrooms Common cooridors L2-L6	20 year limited commercial use warranty Use for common cooridors L2-L6 to run into units	