

# FIFTH AVENUE PLACE ENTRANCE & EXTERIOR RENOVATIONS

HIGHMARK<sup>®</sup>

OCTOBER 08, 2020



**PROJECT STATEMENT**

THIS RENOVATION OF FIFTH AVENUE PLACE SEEKS TO ENGAGE PEDESTRIANS AND THE CITY OF PITTSBURGH BY VISUALLY OPENING THE FACADES TO THE INTERIOR RETAIL AND PUBLIC GATHERING SPACES. THIS INCLUDES FACADE RENOVATIONS TO THE PRIMARY PUBLIC ENTRANCES ON STANWIX STREET AND LIBERTY AVENUE, AS WELL AS TO THE SECONDARY RETAIL ENTRANCES AROUND THE PERIMETER OF THE BUILDING. IN ADDITION, CONSTRUCTION OF A NEW RAISED TERRACE AT THE CORNER OF STANWIX STREET AND PENN AVENUE WILL BE AN AMENITY TO A GROUND FLOOR RESTAURANT AND ACTIVATE THE CORNER WITH RESTAURANT SEATING. THE RENOVATION WILL ALSO INCLUDE UPDATED EXTERIOR PAVING, SEATING AREAS, AND PLANTINGS TO ACTIVATE THE URBAN CONTEXT.

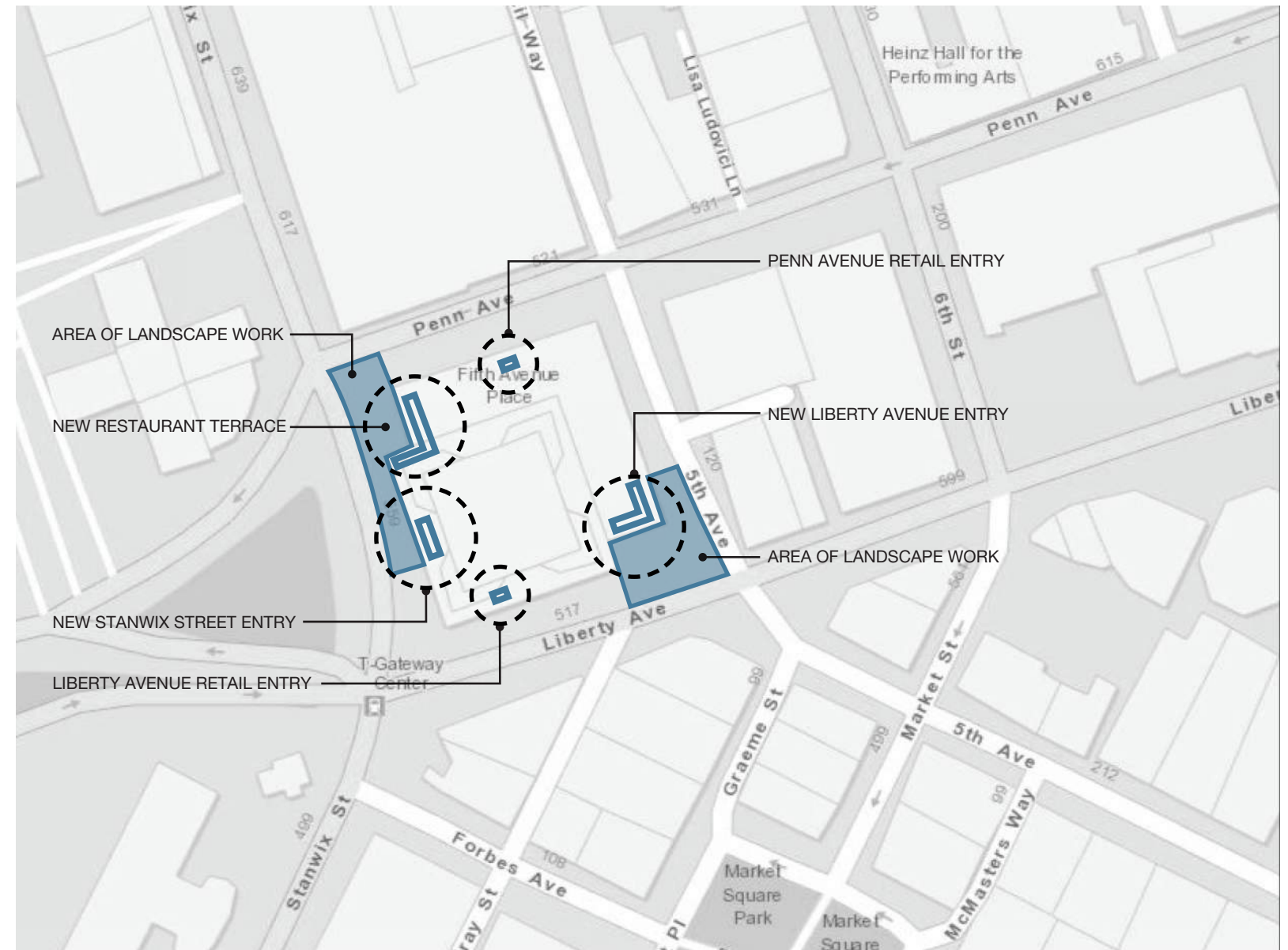


**PROJECT ADDRESS:**

- 120 FIFTH AVENUE, PITTSBURGH, PA 15222
- ZONING DISTRICT: GT-C

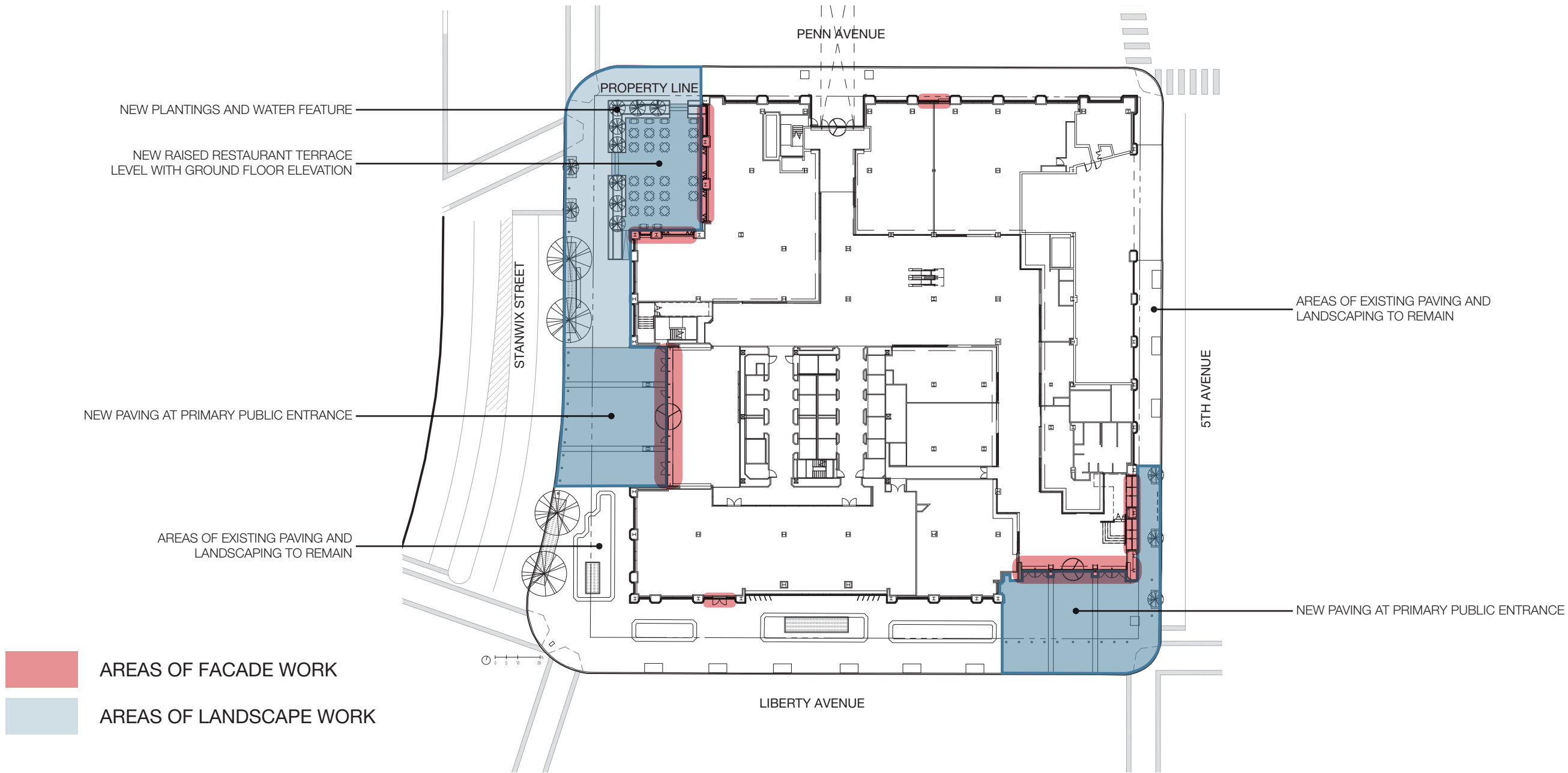
**EXTERIOR SCOPE OF WORK:**

- REPLACING EXISTING CURTAINWALLS, STOREFRONTS, DOORS, & LIGHTING.
- SELECTIVE REPLACEMENT OF CLADDING AT ENTRANCES
- CREATING NEW RESTAURANT TERRACE AT CORNER OF STANWIX STREET AND PENN AVENUE.
- UPDATING LANDSCAPE DESIGN AT ENTRANCES AND NEW RESTAURANT TERRACE WITH NEW EXTERIOR PAVING, SEATING AREAS, AND PLANTINGS



LOCATION MAP





SITE PLAN - LEVEL 01

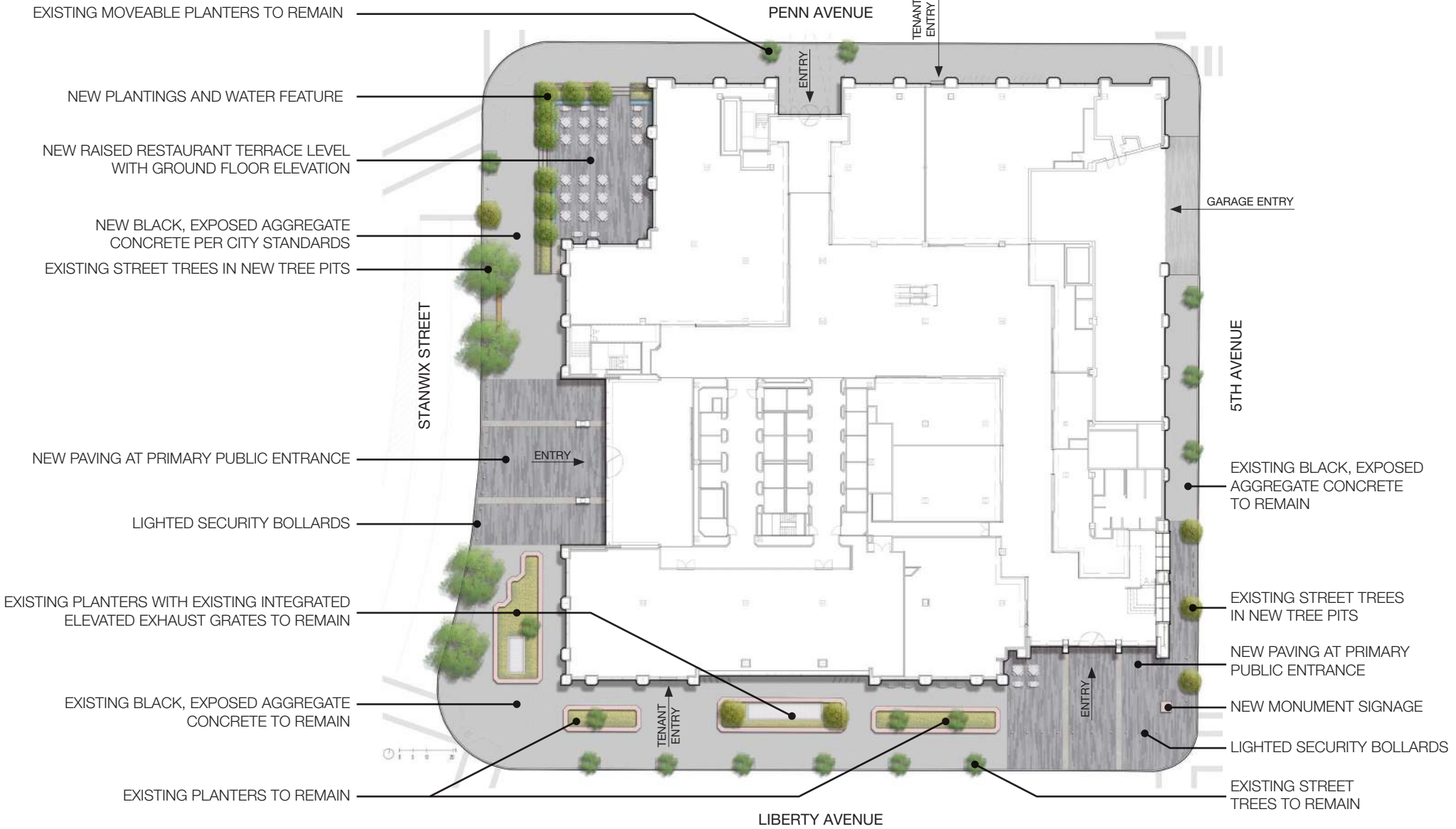
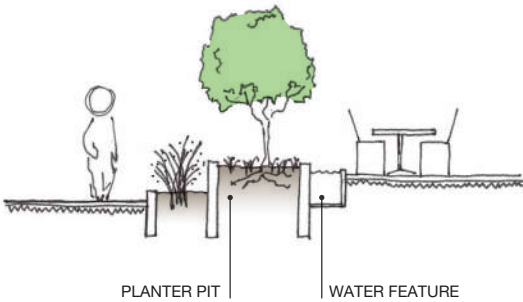
LANDSCAPE DESIGN

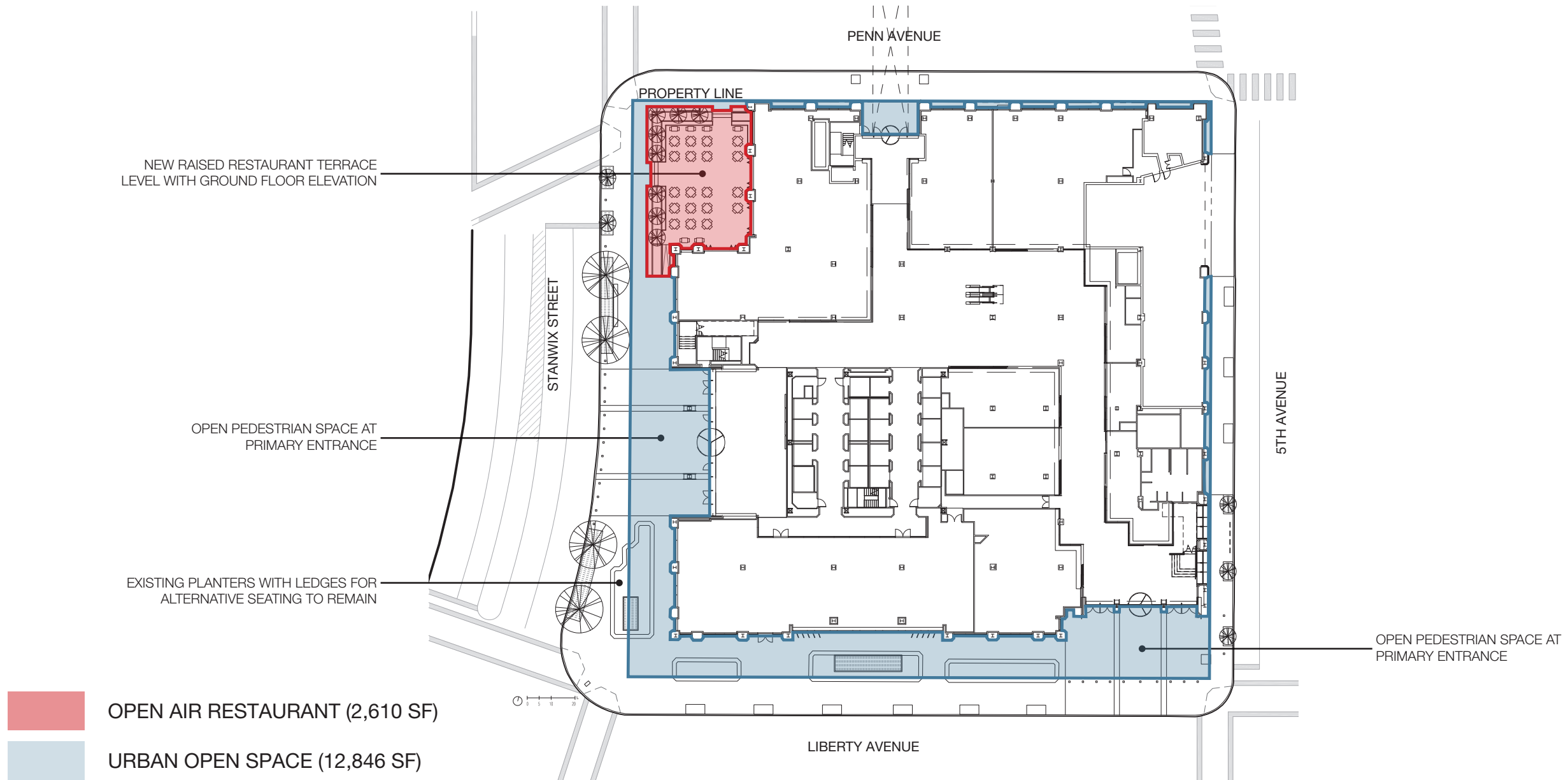
- FEATURE AREA PAVING
- CIRCULATION PAVING
- VEGETATED PLANTERS

FEATURE COUNTS

EXISTING TREES TO REMAIN: 20  
EXISTING TREES TO BE RELOCATED: 2  
NEW TREES TO BE PLANTED: 11

SECTION DIAGRAMS





SITE PLAN - LEVEL 01





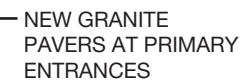
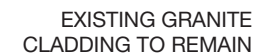
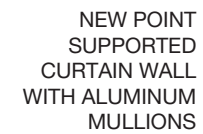
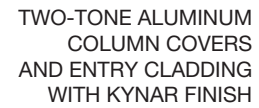
STANWIX STREET TOWARD PENN AVENUE



STANWIX STREET ENTRANCE TO FIFTH AVENUE PLACE



## STANWIX STREET ENTRANCE ELEVATION



## BUILDING MATERIALS





## EXTERIOR SCOPE OF WORK

- REPLACING EXISTING CURTAINWALLS, DOORS, & LIGHTING.
- SELECTIVE REPLACEMENT OF CLADDING AT ENTRANCES
- UPDATING LANDSCAPE DESIGN AT ENTRANCE WITH NEW EXTERIOR PAVING, AND PLANTINGS







CORNER OF LIBERTY AVENUE AND FIFTH AVENUE



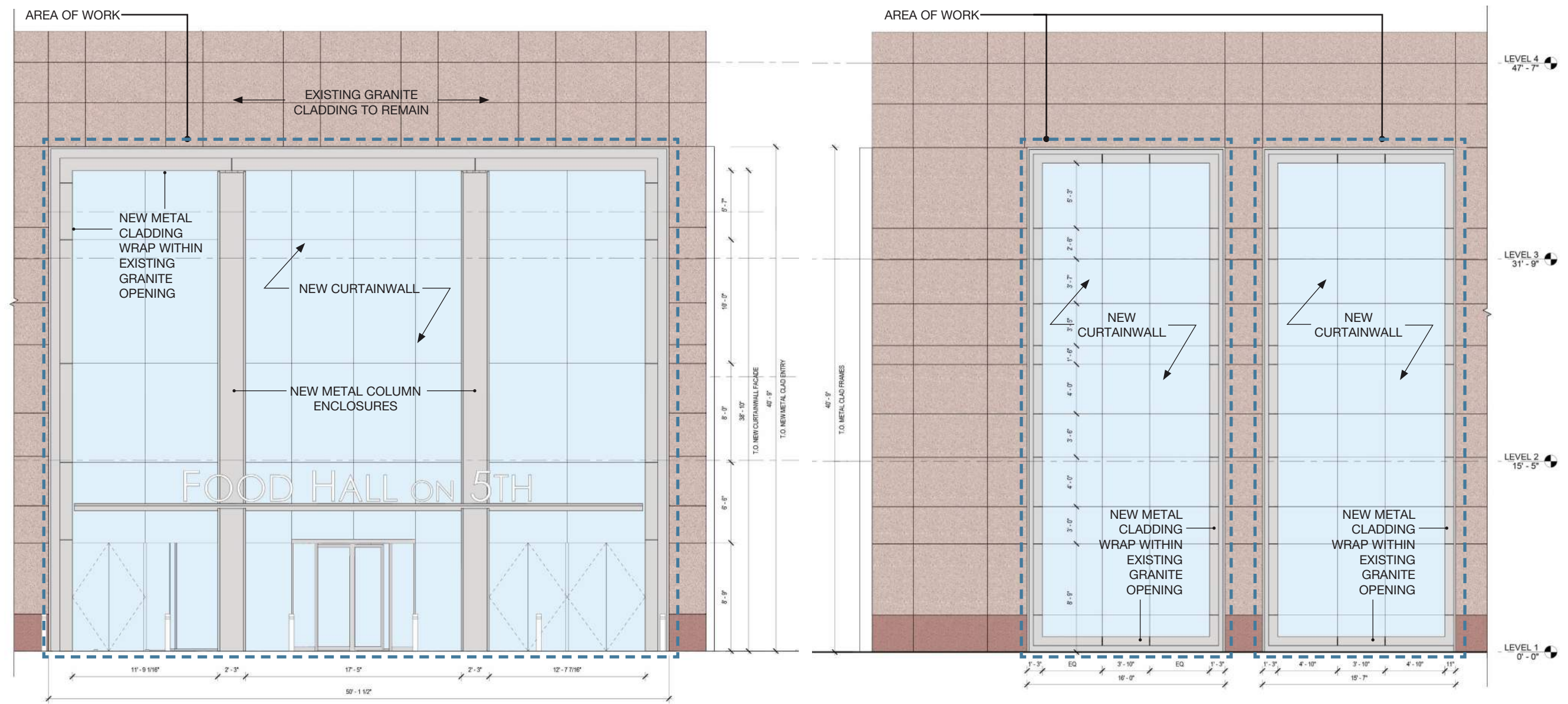
LIBERTY AVENUE TOWARD 5TH AVENUE



LIBERTY AVENUE ENTRANCE TO FIFTH AVENUE PLACE



# LIBERTY AVENUE ENTRANCE ELEVATIONS





## EXTERIOR SCOPE OF WORK

- REPLACING EXISTING CURTAINWALLS, DOORS, & LIGHTING.
- SELECTIVE REPLACEMENT OF CLADDING AT ENTRANCES
- UPDATING LANDSCAPE DESIGN AT ENTRANCE WITH NEW EXTERIOR PAVING, SEATING AREAS, AND PLANTINGS

TWO-TONE ALUMINUM COLUMN COVERS AND ENTRY CLADDING WITH KYNAR FINISH



NEW POINT SUPPORTED CURTAINWALL WITH ALUMINUM MULLIONS



EXISTING GRANITE CLADDING TO REMAIN



NEW GRANITE PAVERS AT PRIMARY ENTRANCES





## SURROUNDING CONTEXT - RESTAURANT TERRACE



CORNER OF STANWIX STREET AND PENN AVENUE



VIEW DOWN PENN AVENUE FROM CORNER



## EXTERIOR SCOPE OF WORK

- NEW RAISED TERRACE WITH NEW EXTERIOR PAVING, PLANTINGS, WATER FEATURE AND SEATING AREA AS AN AMENITY TO INTERIOR GROUND LEVEL RESTAURANT
- PROVIDING DIRECT ACCESS FROM GROUND LEVEL RESTAURANT TO NEW RAISED TERRACE WITH OPERABLE DOORS
- SELECTIVE REPLACEMENT OF CLADDING AT OPENINGS.

TWO-TONE ALUMINUM CLADDING AT OPENINGS WITH KYNAR FINISH



NEW OPERABLE GLASS FACADE



WATER FEATURE



NEW GRANITE PAVERS AT PLAZA





**FIFTH AVENUE PLACE**

---

**ENTRANCE & EXTERIOR  
RENOVATIONS**



2840 LIBERTY AVE  
PITTSBURGH PA 15222  
412.932.2044  
AE7.COM