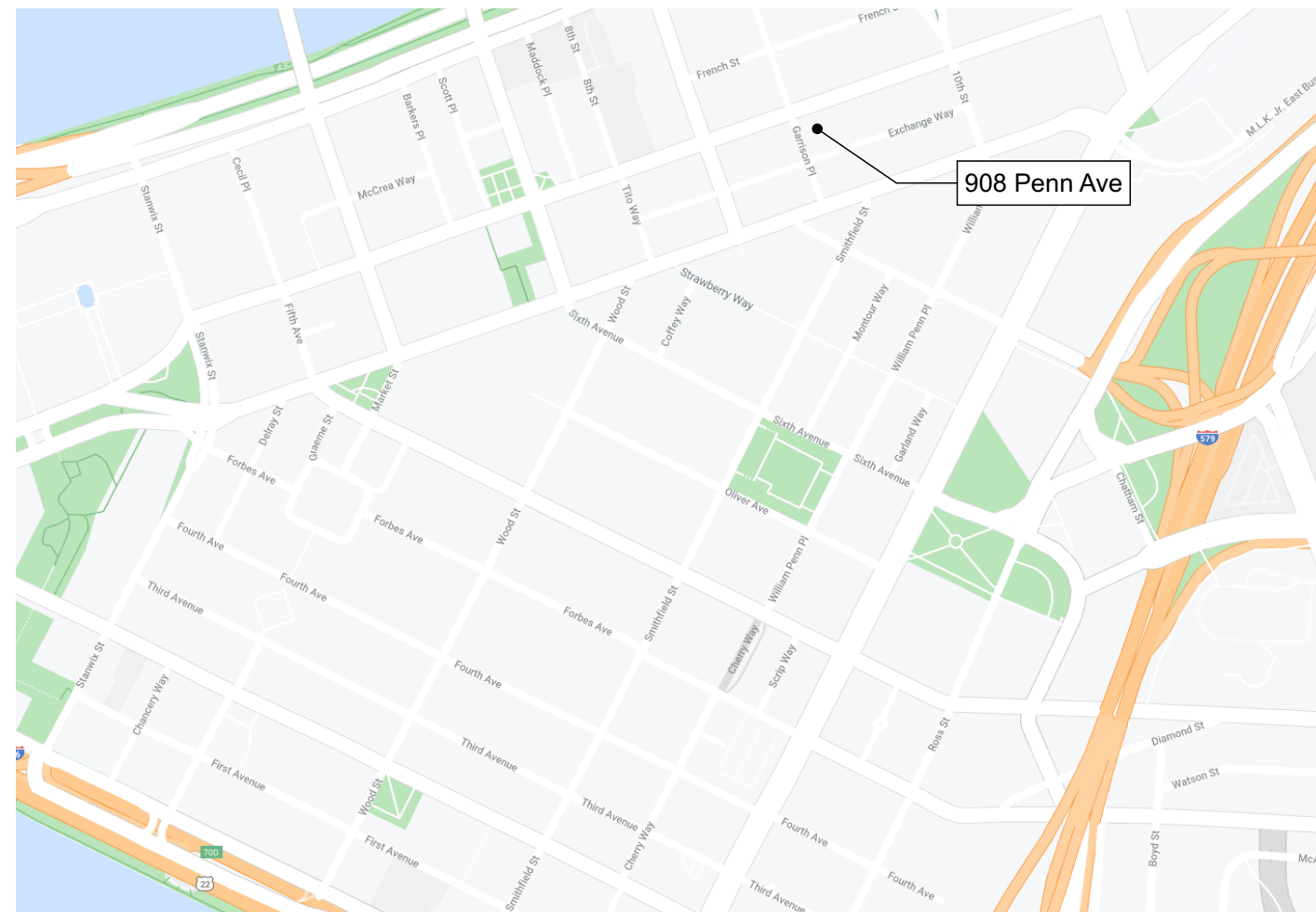


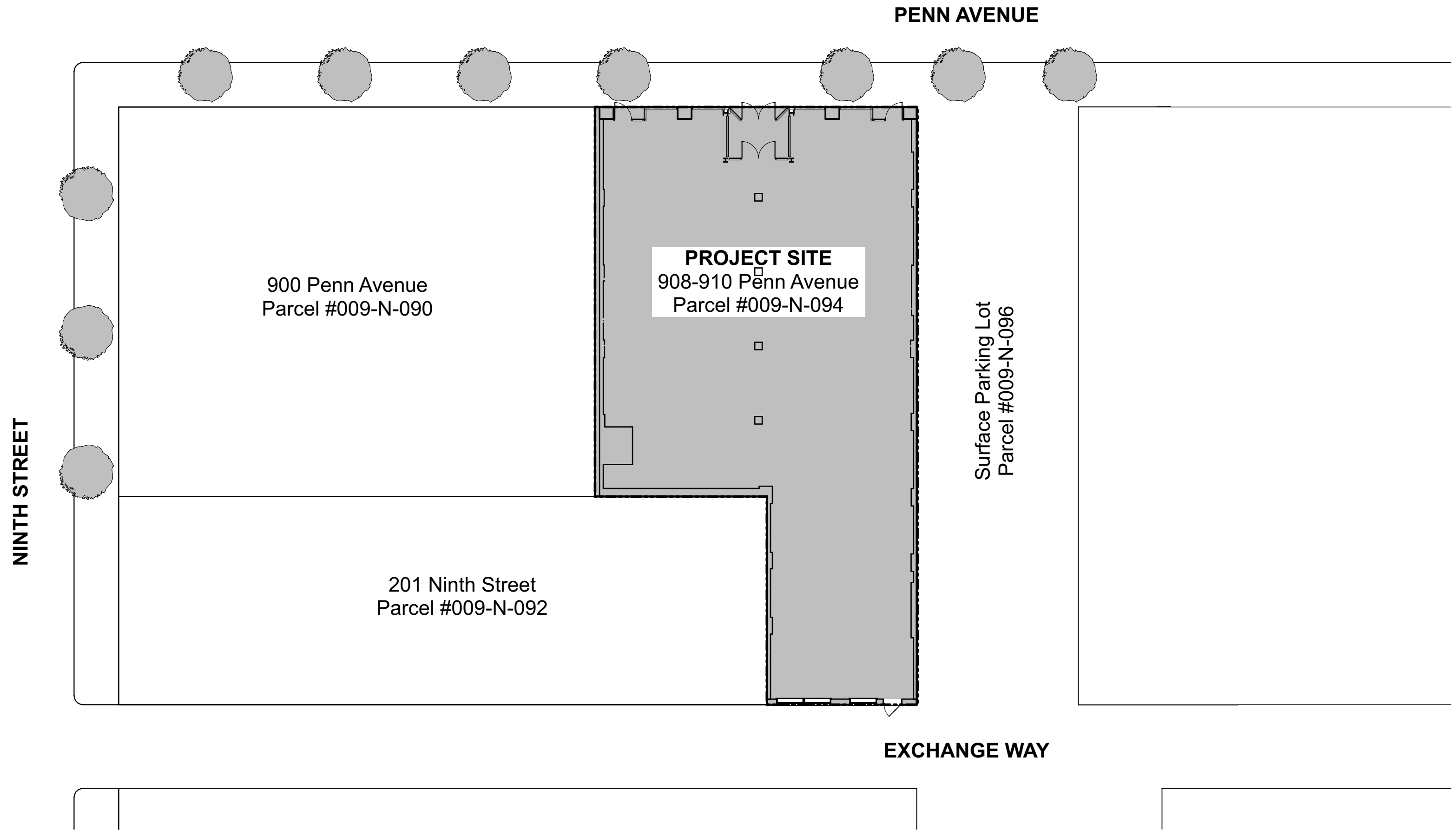
908 Penn Ave

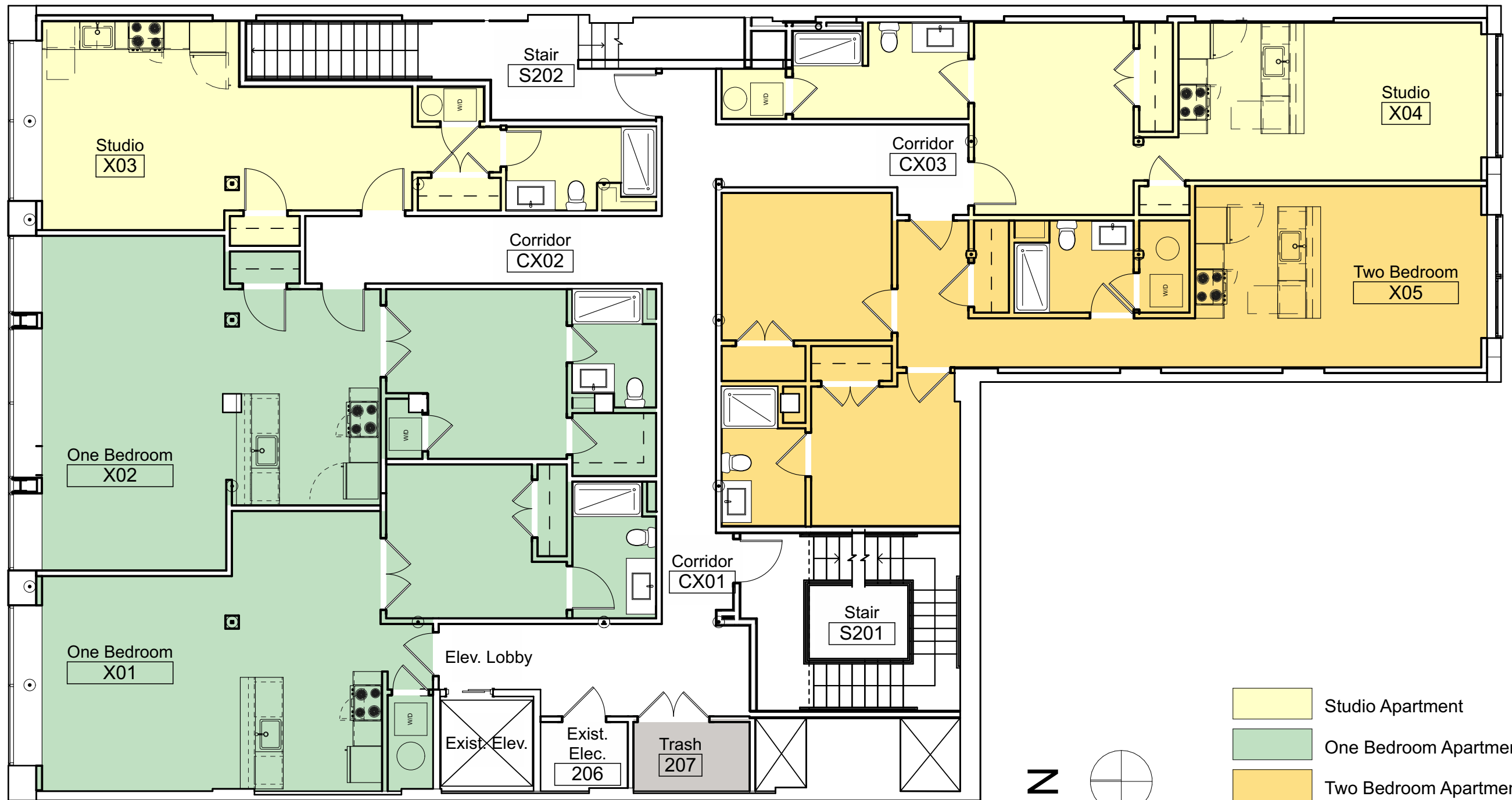
908 Penn Avenue

Zoning District GT-C

Addition of 5 Apartments on the 2nd Floor.







- Studio Apartment
- One Bedroom Apartment
- Two Bedroom Apartment

Sustainability Summary

- **All plumbing fixtures are water conserving low-flow fixtures**
- **All light fixtures are LED**
- **The mechanical system consists of high-efficiency VRF units**

Construction Management Plan

- **No street closures are planned.**
- **All loading through the existing alley way.**
- **Debris will be placed in a dumpster.**
- **Construction duration expected to be 8 months.**

Accessibility

- **The building is fully accessible.**
- **No new accessible units are required due to existing building counts.**