



Carnegie
Library of
Pittsburgh

Carnegie Library of Pittsburgh, Downtown: PDP PRESENTATION

24 March 202

LOYSEN + KREUTHMEIER A R C H I T E C T S



Carnegie
Library of
Pittsburgh

Carnegie Library of Pittsburgh, Downtown: PDP PRESENTATION

24 March 202

LOYSEN + KREUTHMEIER ARCHITECTS



Corner of Smithfield and 6th Avenue, before Alcoa, and with Alcoa under construction



Corner of Smithfield and 6th Avenue, on Marathon Day 2019

PROJECT BACKGROUND

In 2004, Carnegie Library of Pittsburgh's Downtown & Business branch moved into newly renovated office space at 612 Smithfield Street, occupying the first floor and lower level. With that space now out-grown, the Library investigated various downtown sites for relocation, and ultimately concluded that its best solution was to remodel at 612 Smithfield Street.

Concurrent with the investigation of various sites during 2017, L+K facilitated the development of a program for the Downtown branch which acknowledges a changing downtown community and an evolving role for the Library. That program was updated in 2018 with input by CLP staff, facilities, and administration, and is attached within this document for reference. Changes in the nature of its Downtown collections, expanded teen and children's departments, new partnering opportunities, new image considerations and other goals were outlined. During programming sessions, it was clearly expressed that the library should have an important presence downtown.

Throughout the site selection and Schematic Design process, all Library staff have been engaged participants, thoughtful about the role of the library and enthusiastic about the potential of the new space.

Carnegie Library of Pittsburgh Participants:

Mary Francis Cooper	President and Director
Ron Graziano	Director, Facilities
Linda Barsevich	Director, Finances and Administration
Mary Monaghan	Director for Public Services
Carlton Stout	Interim Library Services Administrator, Neighborhood Libraries
Holly Anderton	Branch Manager, CLP Downtown
Lisa Dennis	Collections Coordinator
Erin Zambataroe	Youth and Family Services Coordinator
Sarah Beasley	Library Services Administrator, Collection Development

and many thanks to the input of CLP Downtown's Librarian and Staff team

CLP Downtown Design Team:

Loysen + Kreuthmeier Architects	Architects
WNA Engineering, Inc.	HVAC, Electrical, Plumbing, Fire Protection Consultant
Whitney Bailey Cox and Magnani, LLC	Structural Consultant



Street view before



Street view after

The new design will create a more dynamic, three dimensional presence for the library entrance



Carnegie
Library of
Pittsburgh

Carnegie Library of Pittsburgh, Downtown:

24 March 202

SCHEMATIC DESIGN NARRATIVE

With the goal of creating a vibrant presence for the downtown branch, one key consideration was to re-think the front façade and entry – that is, from the outside in.

- To create a more open, inviting façade, remove existing opaque spandrel glass and re-glaze the entire existing storefront with new clear glass, preferably with low iron, or other non-reflective, glass. Remove interior bulkheads along the windows to increase the opening height.
- To create a more dynamic and visible entry, a new two-story vestibule is created with new glazing and storefront. The new storefront is angled to break the plane of the existing façade and enable sliding automatic doors to be used for entrance doors. Within this new angled entry is to be a large, lighted library logo – anticipated to be neon or LED, as an update to the large logo signs used to date.
- Visible from the sidewalk and within the vestibule will be a new monumental stair (the original opening to the basement space will be closed in) and a new, machineroom-less elevator to the 2nd floor. These new vertical elements are anticipated to invite children, teen and partnering center users to their 2nd floor spaces.
- Also visible from the sidewalk and vestibule will be the first bay of the library, dedicated to retail-like displays, all moveable, and pop-up activities or events.

On the interior, spaces are organized so that the primary adult collections as well window-shopping displays and grab-and-go collections are on the first floor. Staff work areas and book processing are also located on the first floor. For customer assistance, a hierarchy of options is provided:

- I Can Help – first stop, aiming new customers in the right direction
- Customer Services Desk – helping customers obtain a card, pay fees, or with other administrative needs
- Reference Desk – to help customers search for specific books or information
- Partnering - places for help organizations to facilitate learning and research
- Self-Service – book drop, self-serve reserves, self-check, self-serve printer/fax/copier, opac, & queue
- Security Desks - two on the first floor and one on the second floor, with guards accustomed to fielding ad-hoc questions

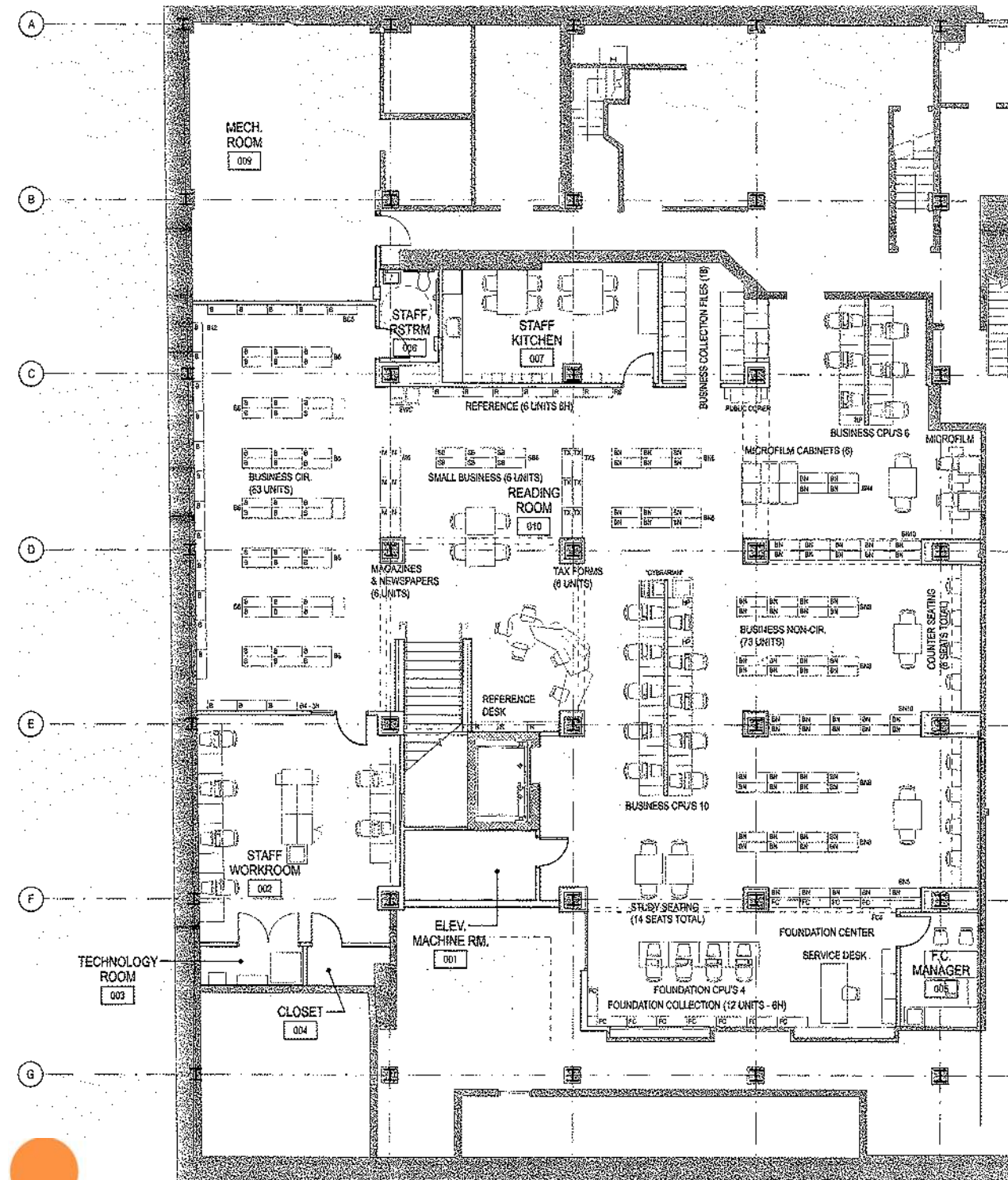
Children's and Teen's spaces are located on the 2nd floor, along with Meeting Rooms and the new Partnering Center. Specific considerations for these include:

- All meeting rooms and programming rooms will have glass walls and doors for visibility
- All meeting and programming rooms will have smart boards or tv screens
- All desks will have access to power.
- The Teen area includes a recording booth

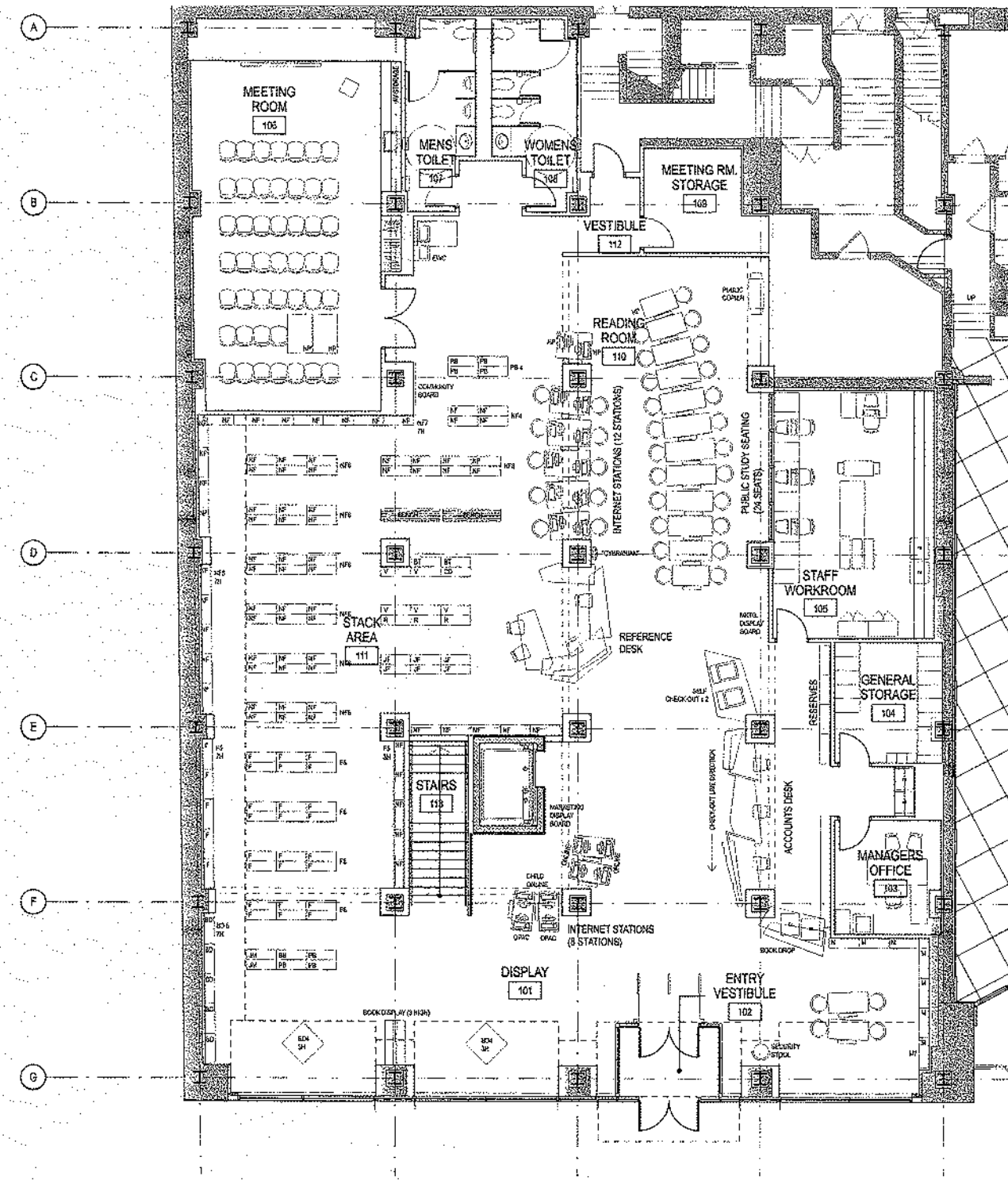
Also located on the 2nd floor are the primary public toilets, which will have no doors, the Staff Lounge, and various back-of-house functions. A catering pantry serving the meeting rooms is located on the section floor.

PDP PRESENTATION

LOYSEN + KREUTHMEIER ARCHITECTS



E1 BASEMENT PLAN
1/8"=1'-0"

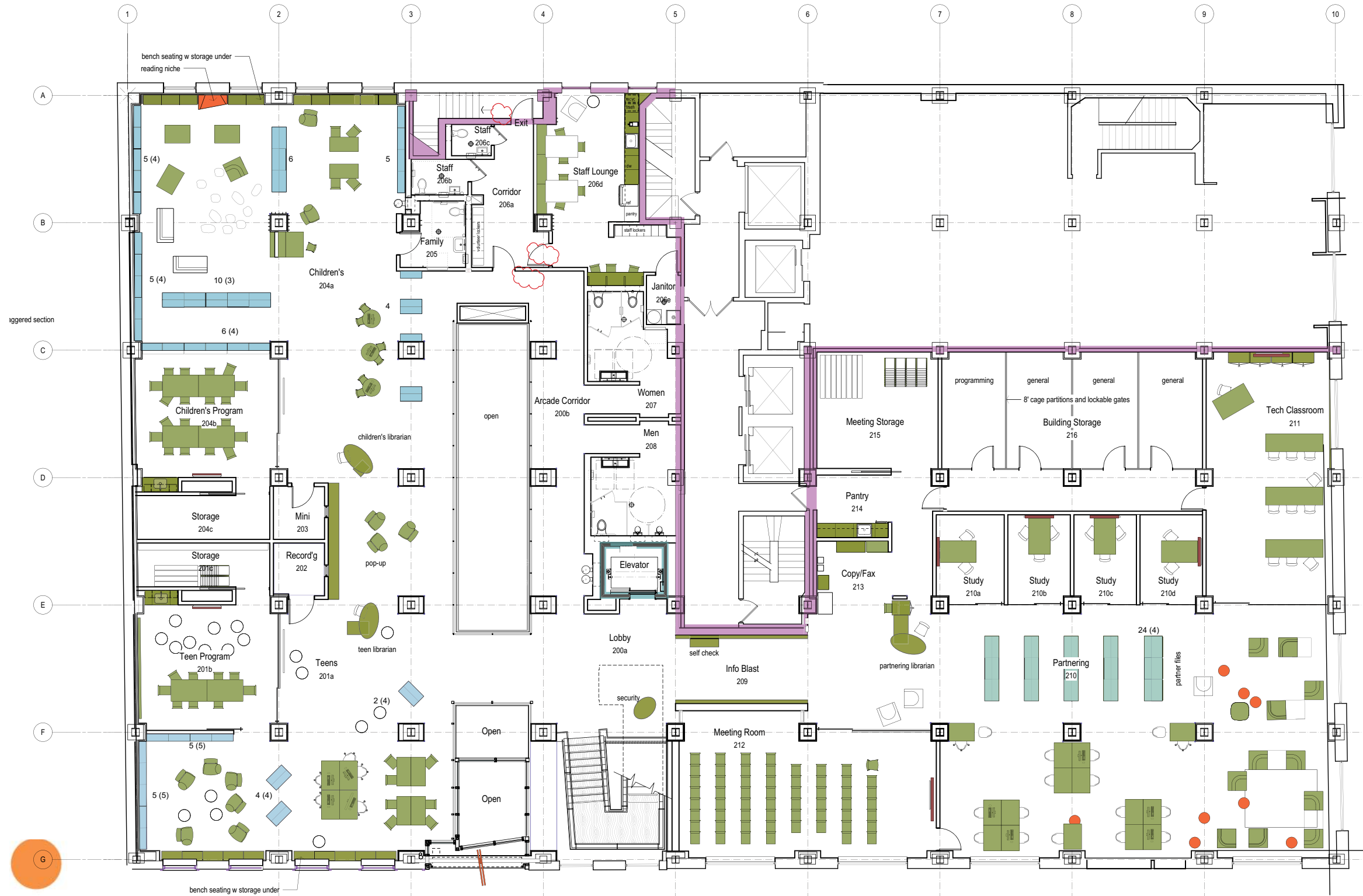


E4 FIRST FLOOR PLAN
1/8"=1'-0"

existing floor plans, basement & first floors



LOYSEN + KREUTHMEIER A R C H I T E C T S





Carnegie
Library of
Pittsburgh

Carnegie Library of Pittsburgh, Downtown: PDP PRESENTATION

24 March 202

LOYSEN + KREUTHMEIER ARCHITECTS



Carnegie
Library of
Pittsburgh

Carnegie Library of Pittsburgh, Downtown: PDP PRESENTATION

24 March 202

LOYSEN + KREUTHMEIER ARCHITECTS

Coming Soon.....!



Carnegie
Library of
Pittsburgh

Carnegie Library of Pittsburgh, Downtown: PDP PRESENTATION

24 March 202

LOYSEN + KREUTHMEIER A R C H I T E C T S